

Thurston County HABITAT CONSERVATION PLAN



CHRISTINA CHAPUT



Thurston County HCP Video

<https://www.youtube.com/watch?v=YxSLsi-cliM>

An HCP is a mitigation plan



```
graph TD; A[An HCP is a mitigation plan] --> B[It needs to be reviewed and approved by US Fish and Wildlife Service]; B --> C[Once approved US Fish and Wildlife Service issues an Incidental Take Permit];
```

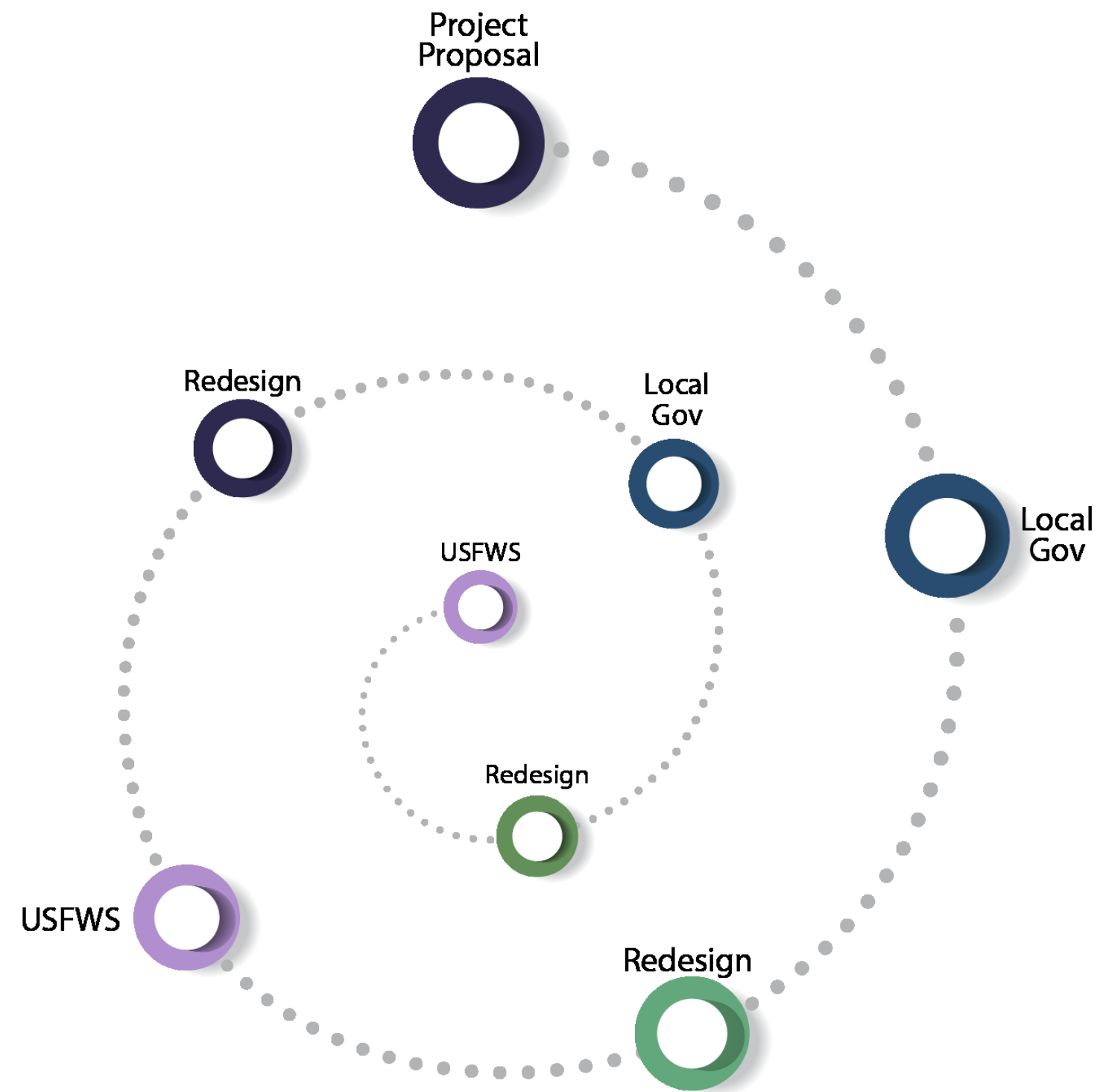
It needs to be reviewed and approved by US Fish and Wildlife Service

Once approved US Fish and Wildlife Service issues an Incidental Take Permit

What is an HCP?

- ✓ Response to federal species listings (ESA)
- ✓ Pathway for project approval
- ✓ Certainty for 30 years
- ✓ Maintains local control

Why an HCP?



Why an HCP?



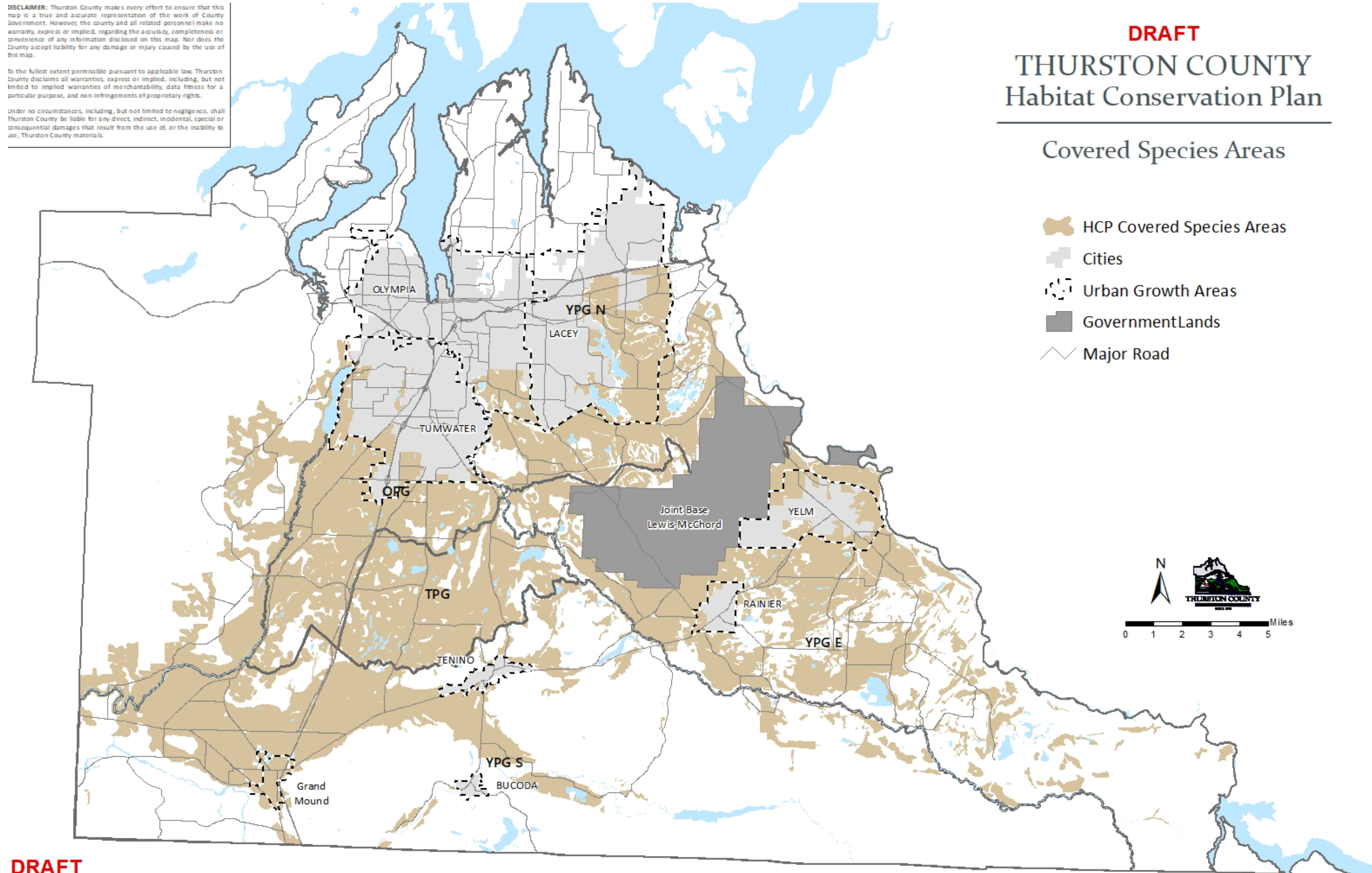
A New Approach

Where will it work?

DISCLAIMER: Thurston County makes every effort to ensure that this map is a true and accurate representation of the work of County Government. However, the county and all related personnel make no warranty, express or implied, regarding the accuracy, completeness or convenience of any information disclosed on this map. Nor does the County accept liability for any damage or injury caused by the use of this map.

To the fullest extent permissible pursuant to applicable law, Thurston County disclaims all warranties, express or implied, including, but not limited to implied warranties of merchantability, data fitness for a particular purpose, and non-infringements of proprietary rights.

Under no circumstances, including, but not limited to negligence, shall Thurston County be liable for any direct, indirect, incidental, special or consequential damages that result from the use of, or the inability to use, Thurston County materials.

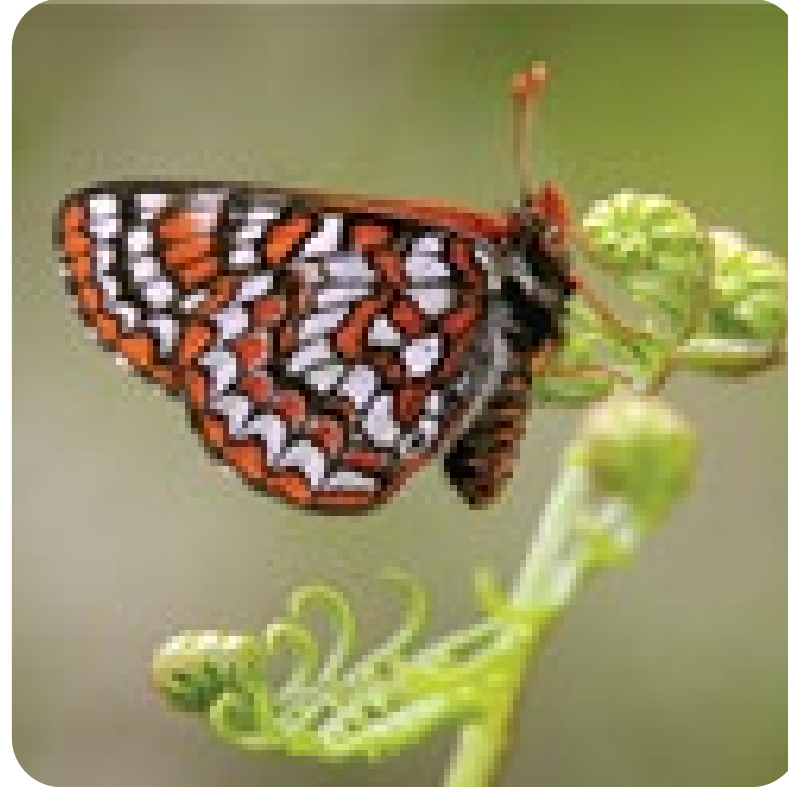


- ✓ Unincorporated Thurston County (outside cities), including UGAs
- ✓ Wherever there is covered species habitat
- ✓ Specific service areas for gopher sub-species

Covered Species



Oregon vesper
sparrow



Taylor's
checkerspot
butterfly



Oregon spotted
frog



Mazama pocket
gopher

(Olympia, Yelm, & Tenino)

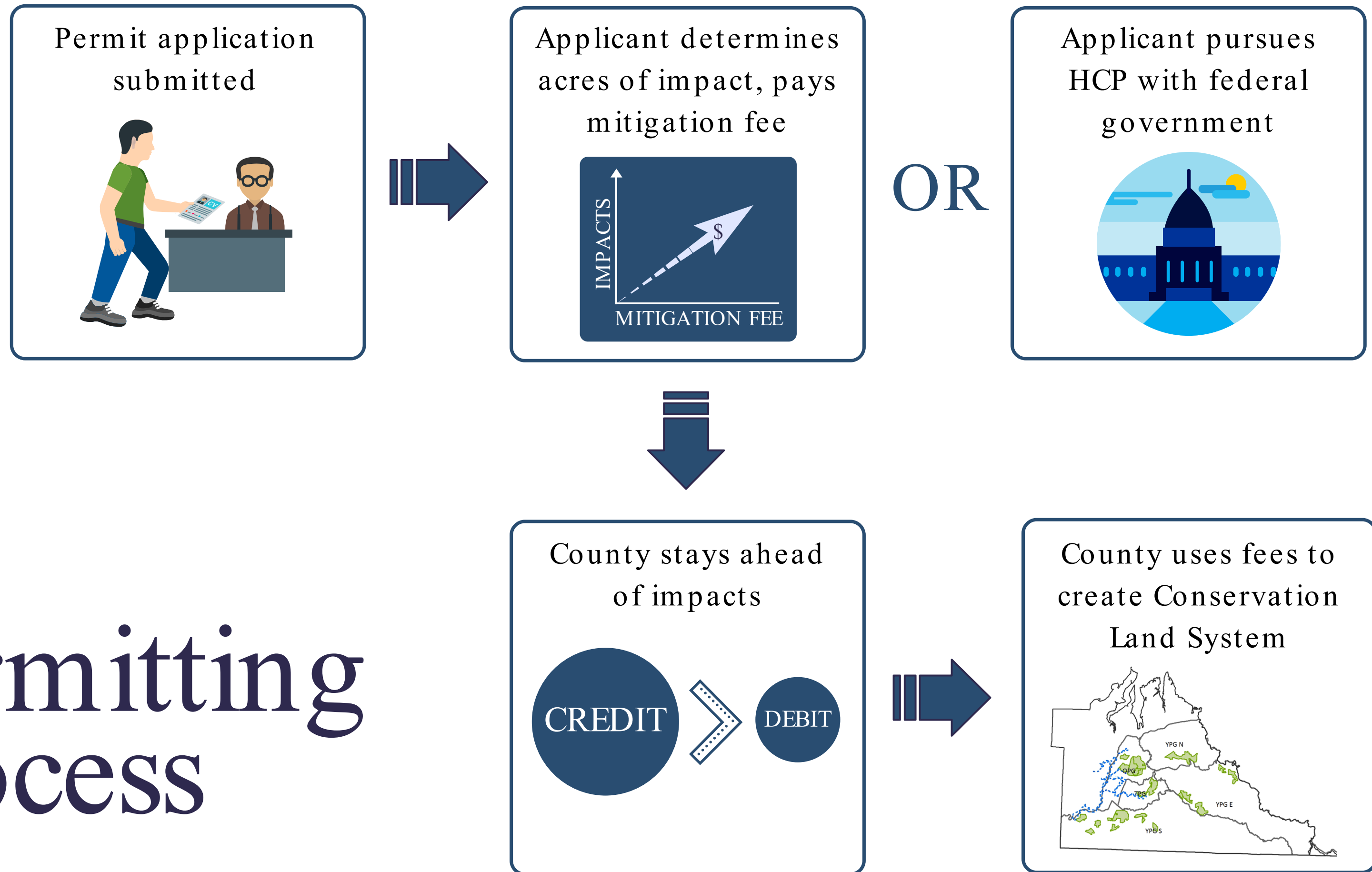
Covers most
development





Mining goes through
a different process

Permitting Process



Conservation Program



Conservation Land System



3,469 acres



New Reserves

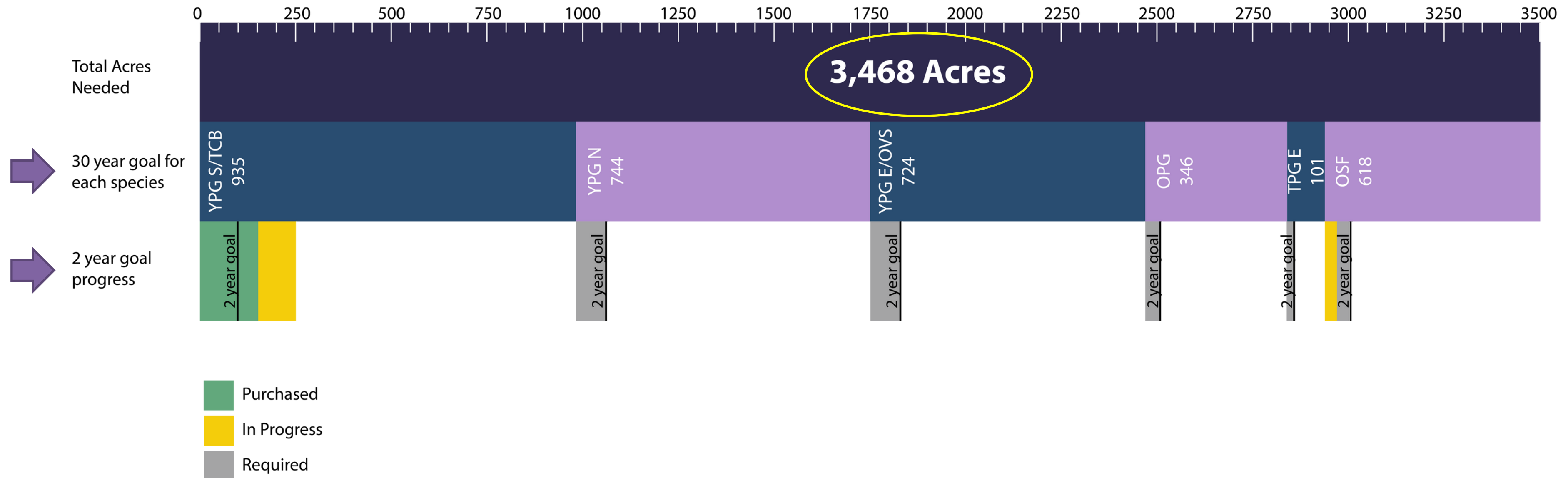


Enhance Existing Preserves

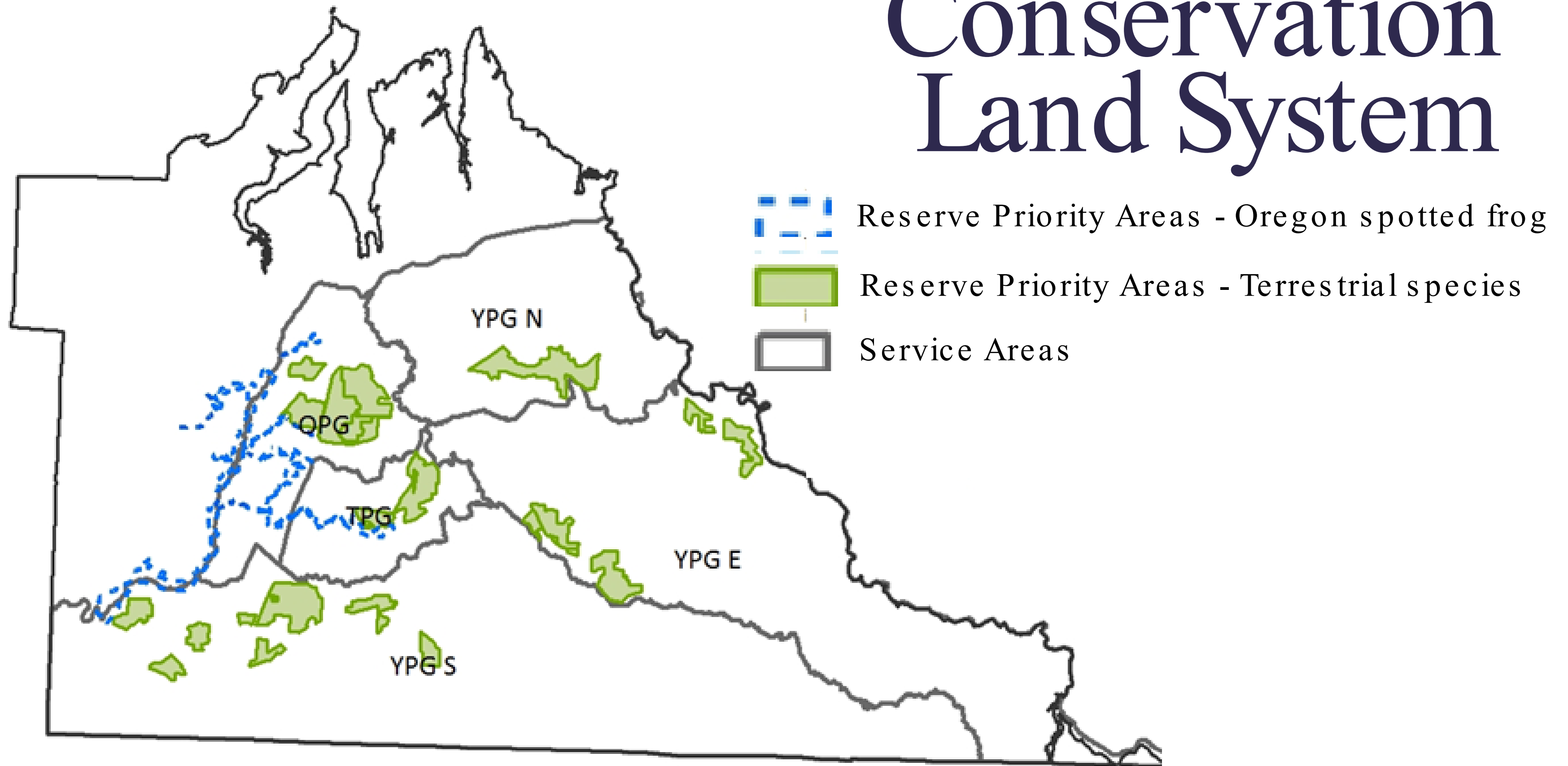


Working Lands Easements

Total Acres Needed



Conservation Land System

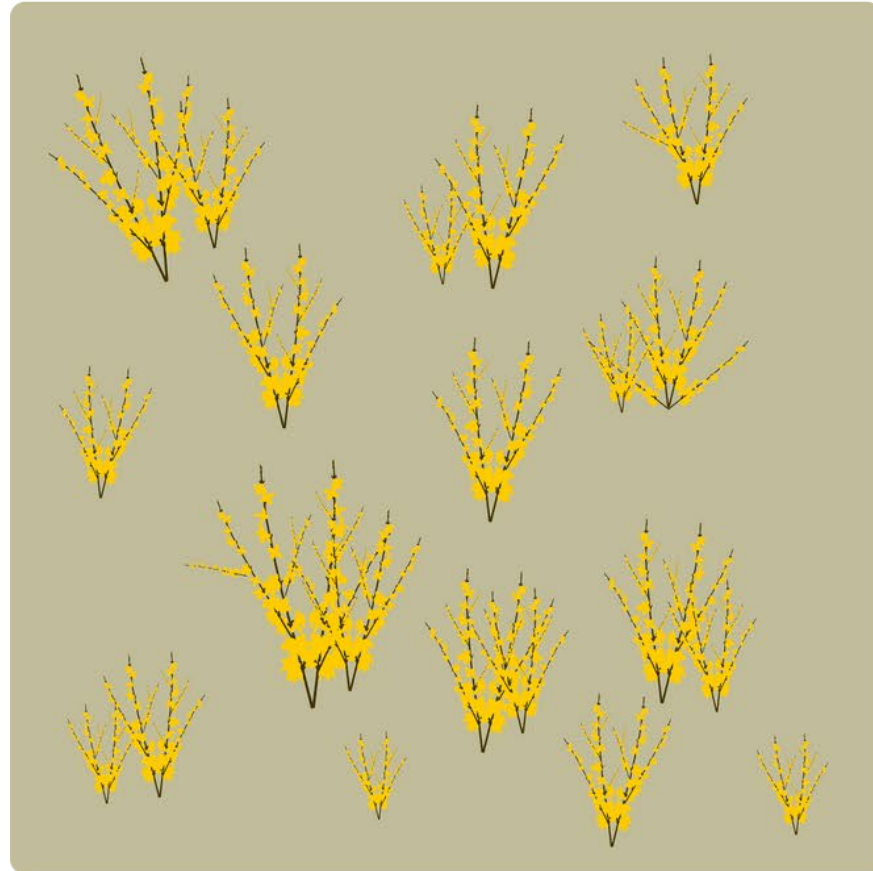




Professionally Managed

Mitigation Credits

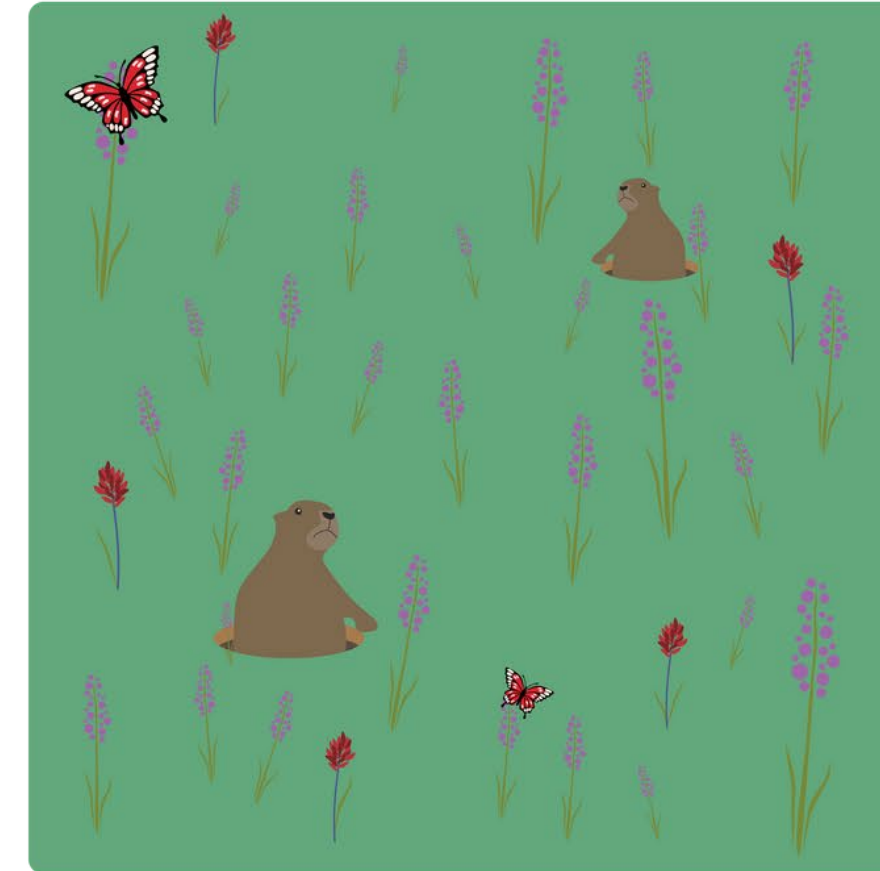
No management
Less preferred soil
No gophers



Some management
More preferred soil
Gophers w/in 650'



Full management
More preferred soil
Gophers present



Less credits

More credits

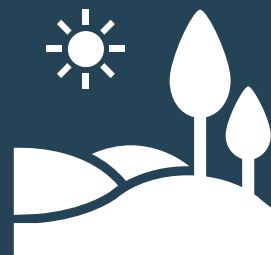
What About Cost



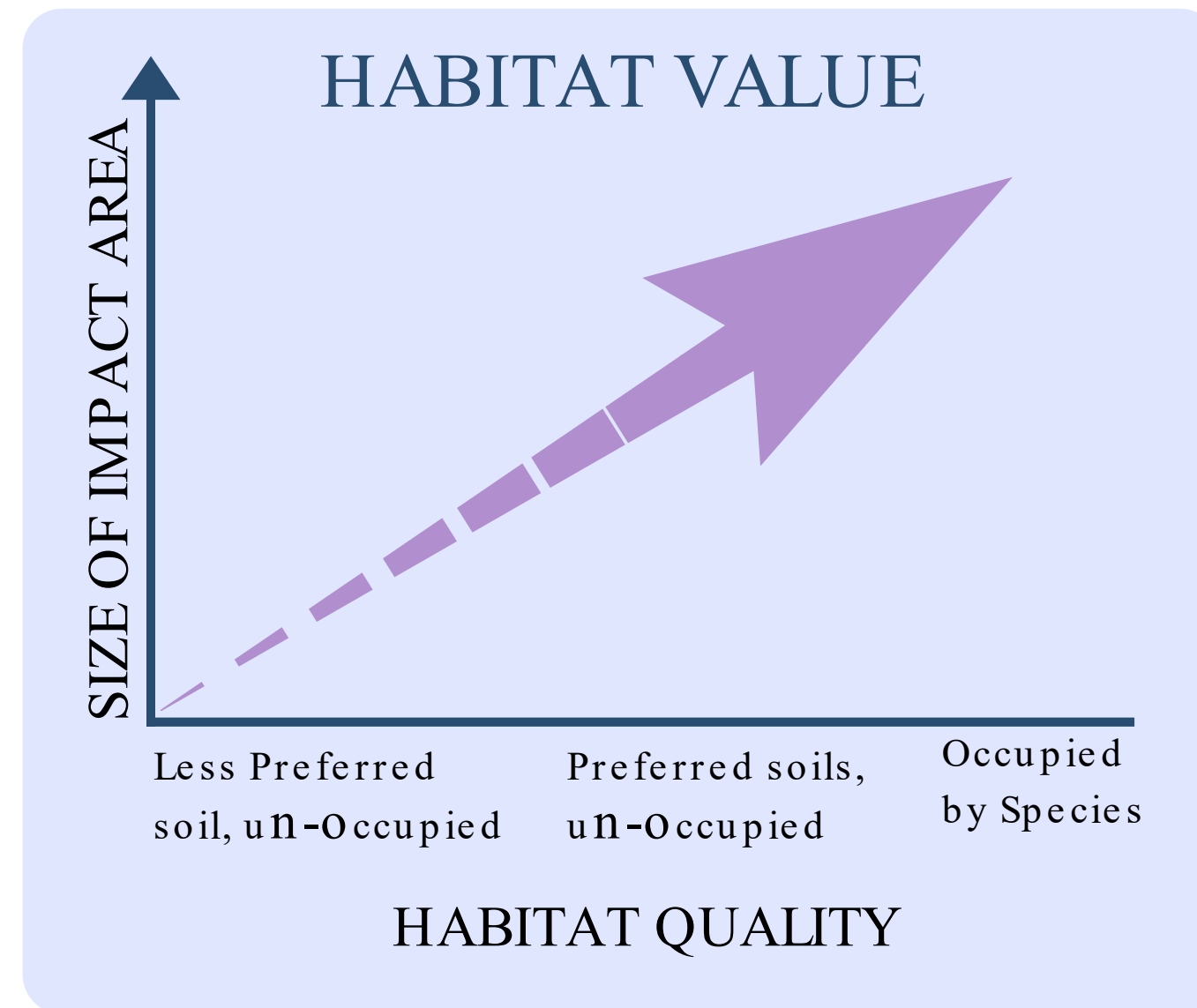
- ✓ County is investing in mitigation to reduce costs for individual property owners
- ✓ HCP will save time and money compared to status quo (EcoNorthwest Economic Study)
- ✓ Self-service calculators for project development (the less you impact, the less you pay)

Customized Determination

To measure habitat quality for a plot of land, the HCT weights features for breeding and foraging that the covered species require throughout their lifecycle and considers The tool looks at that overall habitat and measures it as a percent of optimal condition.



Habitat Calculation Tool



Acres of Impact X Habitat Value = Credits Needed

Credits Needed X Cost per Credit = Mitigation Fee

Ready for Uncertainties



Adaptable



Climate Change

Collaboration



Conservationists



Farmers

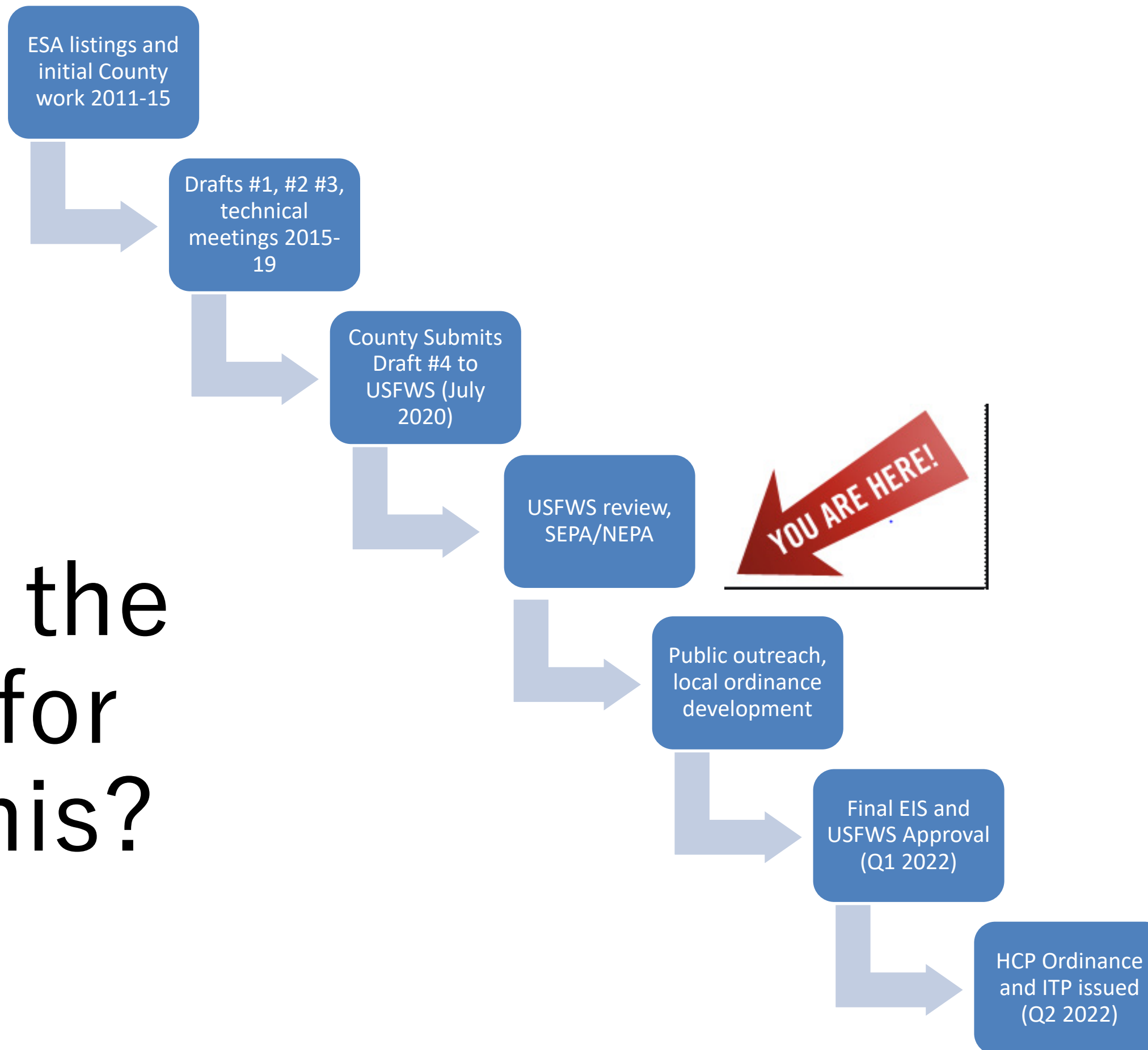


Community



Developers

What's the
timing for
all of this?



thurstonhcp.org

Thurston County
HABITAT CONSERVATION PLAN



A photograph of a field of wildflowers, primarily yellow and purple, under a bright blue sky with scattered white clouds. The flowers are in various stages of bloom, with some showing green buds. The background is slightly blurred, emphasizing the foreground flora.

Questions?

Christina Chaput, Interim Planner Manager

Christina.Chaput@co.Thurston.wa.us