

THURSTON COUNTY COMMUNITY PLANNING

JOINT YELM AND THURSTON COUNTY PLANNING COMMISSION: MAY 22, 2023



Yelm Joint Plan Update: Work Session I

SUMMARY

Purpose of the Joint Work Session



Summary of the Joint Plan



Next Steps

PURPOSE OF THE JOINT WORK SESSION

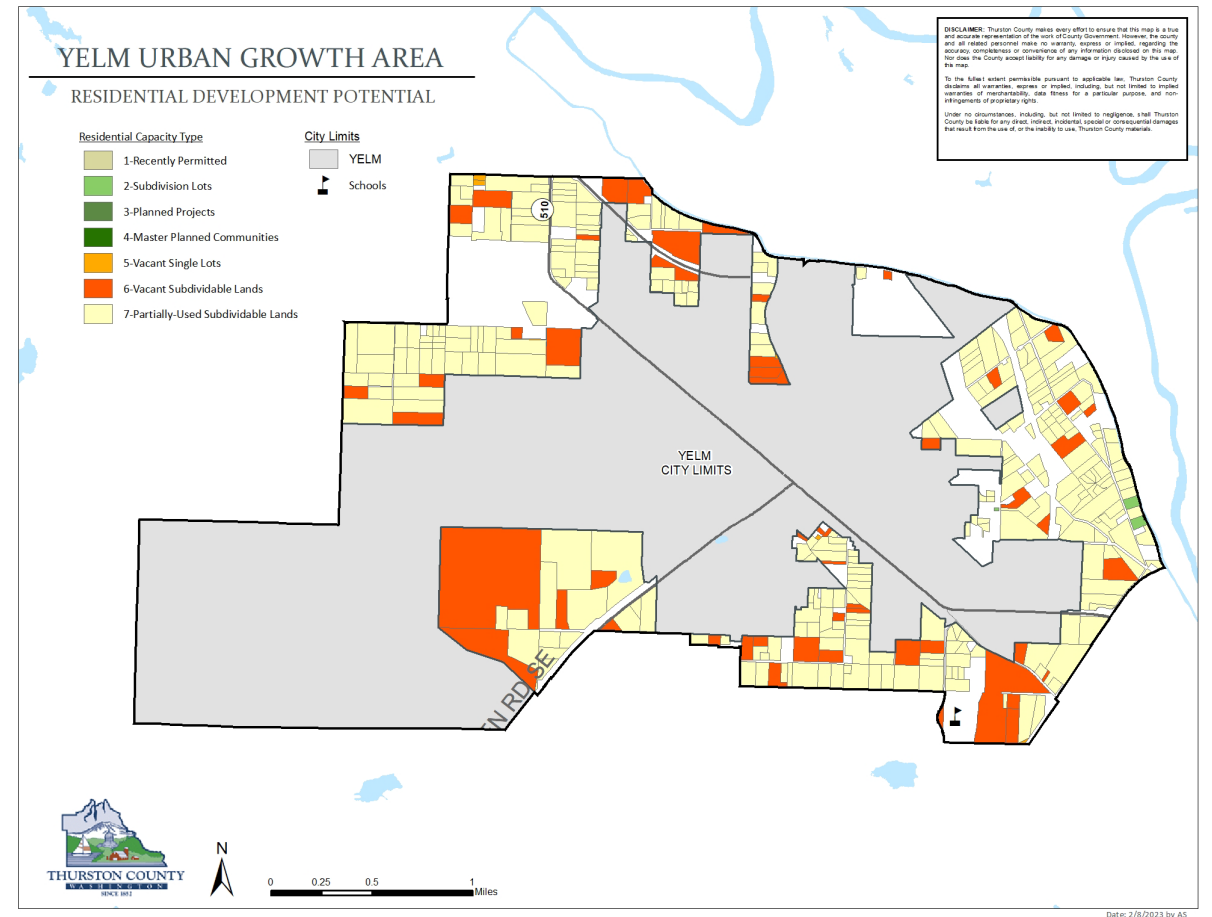
- The Joint Plan is an element of both the City and County Comprehensive Plans
 - The last adopted Joint Plan between the City of Yelm and Thurston County was in 2006
- The 2023 update is a full repeal and replace
 - Based off of 2017 City of Yelm Comprehensive Plan, updated to align with current conditions and County policies

PURPOSE OF THE JOINT PLAN

- Requirement of the Growth Management Act
- Helps fulfill County-wide Planning Policies
- Provides consistency and predictability for residents
- Aids in transitions when areas are annexed

PRIMARY GOALS OF THE UPDATE

- Update to include current conditions and maps
- Align with existing goals and policies with the City and County



ELEMENTS, GOALS AND POLICIES



Photo by [Peter Robbins](#) on [Unsplash](#)

- Land Use
- Housing
- Utilities
- Transportation
- Economic Development
- Parks and Recreation
- Environmental Protection and Critical Areas
- Essential Public Facilities

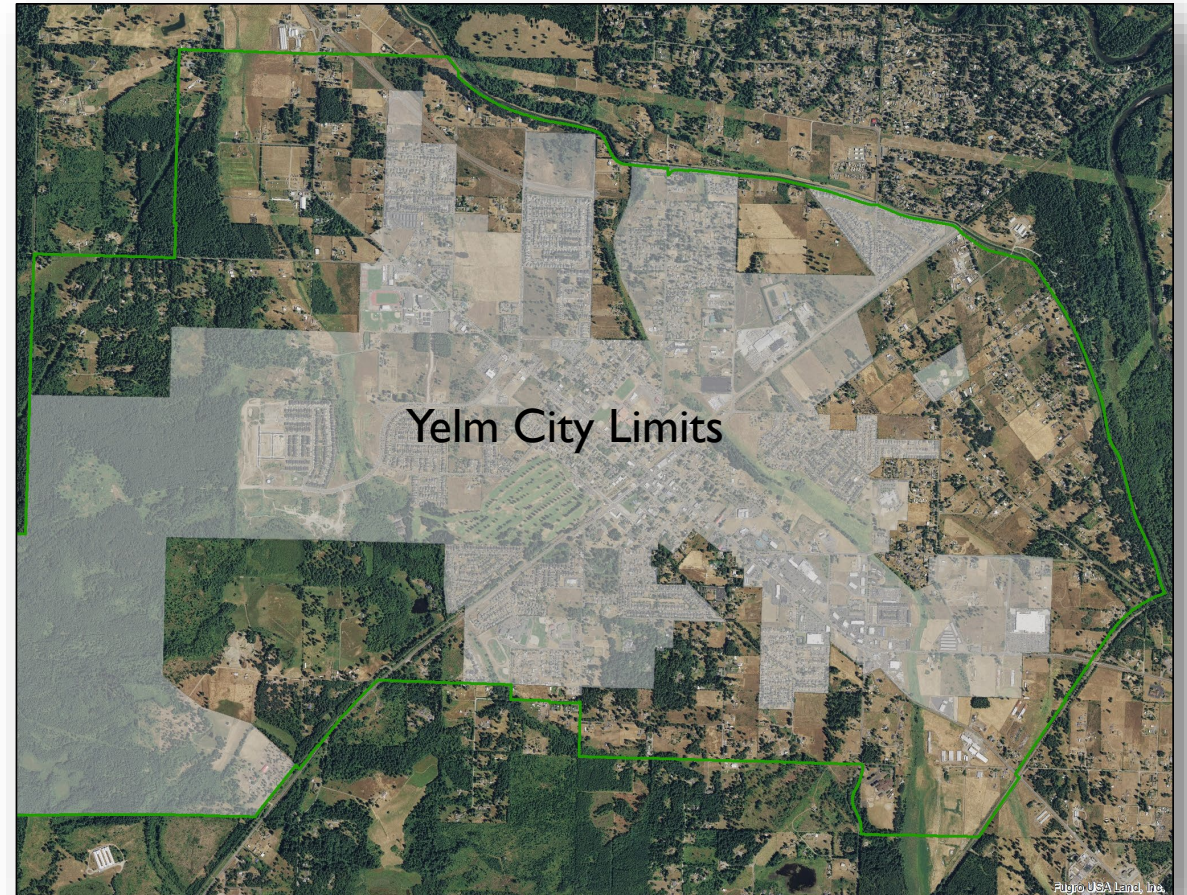
LAND USE: BACKGROUND

- The Land Use Element is the largest section of the Joint Plan and helps establish the direction for the future growth of the Joint Plan area
- The Land Use goals and policies are intended to ensure coordination with other Joint Plan elements, regional plans, and County-wide Planning Policies
- The goals and policies serve to define the action plan for implementing the Joint Plan

LAND USE: UGA CHARACTERISTICS

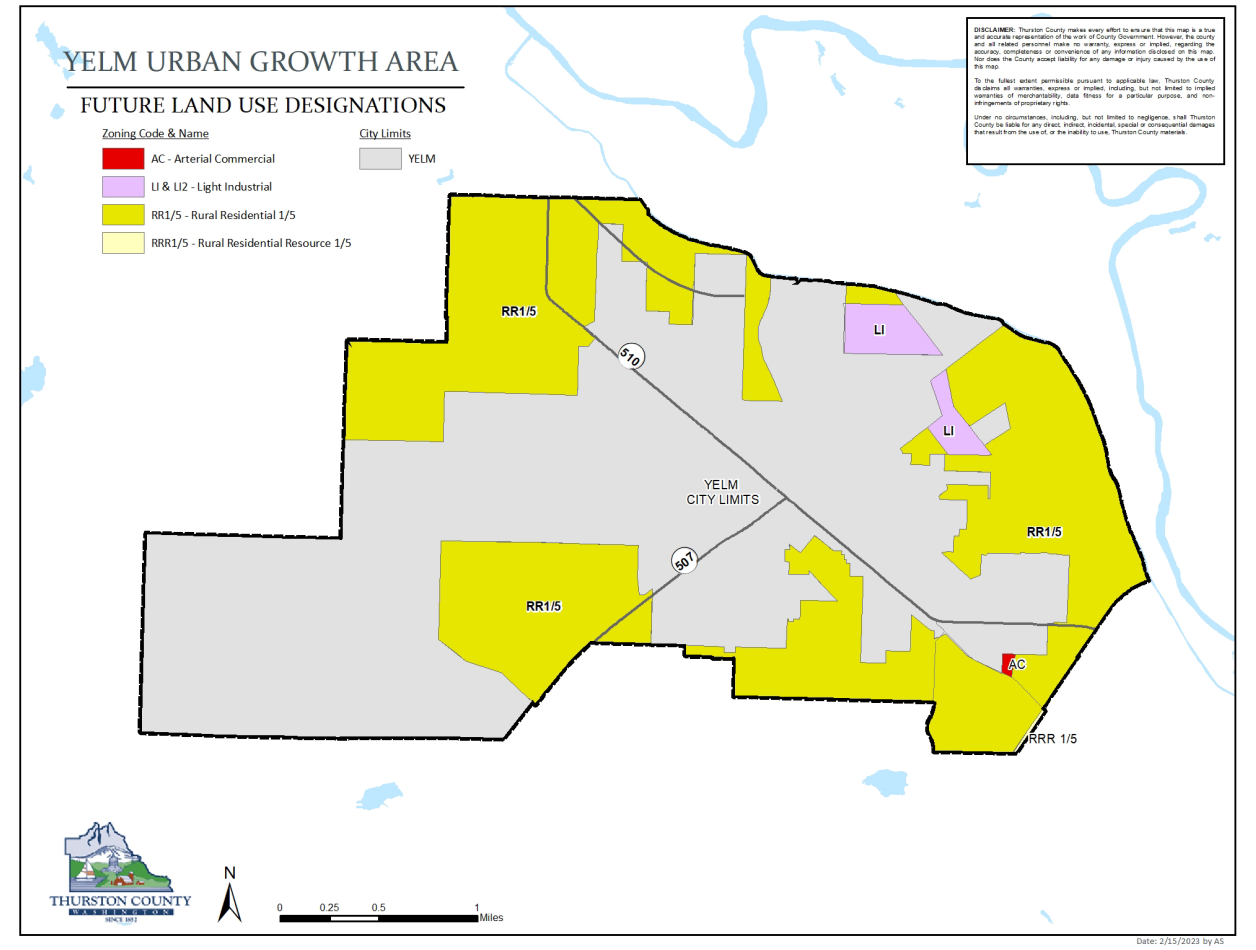
	2020	2045
Yelm UGA Population	1,514	1,670

- Yelm UGA=±2,387 acres
- The UGA is projected to grow at a slower rate than the City Limits
- As sections of the UGA are annexed, they will have their land use changed to more urban densities



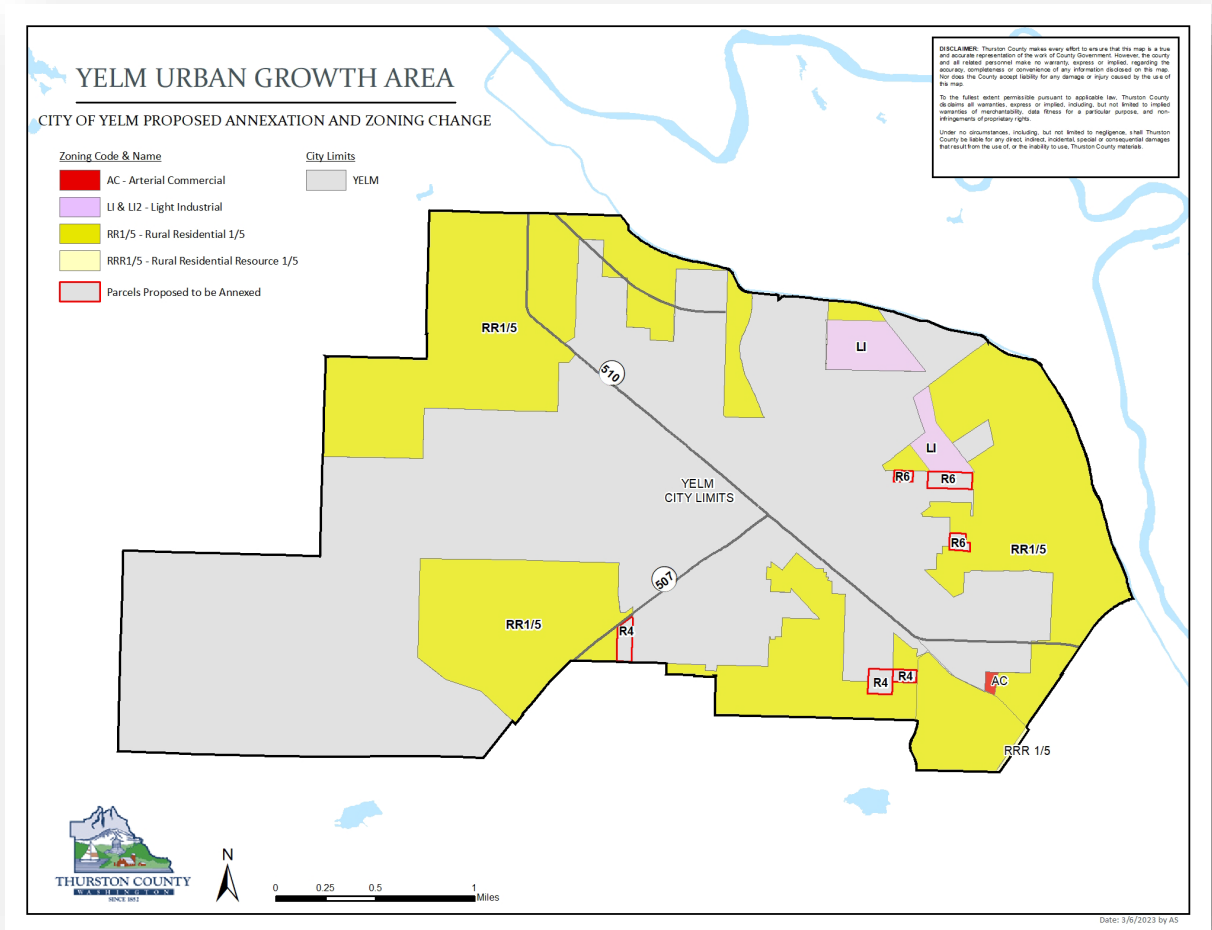
LAND USE: GOALS

- Promote smart growth to best utilize available land and services
- Maximize redevelopment potential
- Create safe and vibrant neighborhoods
- Adopt policies that make the transition from UGA to City-density smoother



LAND USE: LOOKING FORWARD

- Following annexation, it is expected that lands be zoned for urban densities.
- This map shows the future land use designations that are expected to apply following annexation by the City of Yelm.
- This map may be modified based on City leadership's decisions.



HOUSING: GOALS



Conserve and
improve
existing
housing and
neighborhoods



Promote energy-
efficient and
weatherized
housing



Ensure housing
affordable to all
income levels

CAPITAL FACILITIES

Each jurisdiction maintains their own Capital Facilities Plan as part of their Comprehensive Plan



UTILITIES: GOALS



Ensure that utilities and public facilities are environmentally sensitive, safe, reliable, and a reasonable expense



Manage stormwater and wastewater in a cost-effective and environmentally sound way



Increase energy efficiency and conservation

TRANSPORTATION: GOALS

- Create a well-maintained transportation system that is compatible with surrounding jurisdictions and transportation providers
- Design a transportation system with minimal environmental impact and energy consumption
- Improve infrastructure around schools to increase safety and access



ECONOMIC DEVELOPMENT: GOALS

According to recent TRPC data, the top sectors in Yelm & the UGA are:

Retail Trade

Local Education

Healthcare and Social Assistance

Accommodation and Food Services

Goals:

- Support clean industry, tourism, higher and vocational education, and retail
- Coordinate economic development efforts
- Create an innovation culture to encourage entrepreneurship
- Provide robust infrastructure through sustainable practices to support economic development

PARKS AND RECREATION: GOALS



- Create a network of park and open space lands that serve the residents of Yelm and its UGA
- Plan and develop a trail network
- Encourage public and private efforts to provide parks, recreation facilities, and recreation programs
- Conserve open space corridors

ENVIRONMENTAL PROTECTION AND CRITICAL AREAS: GOALS



- Protect Yelm's natural environment by regulating development within critical areas
- Prevent the loss of life and property in hazardous critical areas
- Protect air and water quality and reduce pollution
- Preserve environmentally sensitive lands, farmlands, forest lands, prairies, and rural lands through the development of compact urban areas

ESSENTIAL PUBLIC FACILITIES: GOALS

- Provide emergency services in a dependable and efficient manner
- Create a resilient region by improving disaster preparedness, response, and recovery efforts, as well as by expanding public safety education
- Provide for the siting of essential public facilities

"Essential public facilities"
means public facilities and privately-owned or operated facilities serving a public purpose that are typically difficult to site- TCC 20.03.040.

NEXT STEPS

Joint Planning
Commission
Work Session
May 22

Tentative Joint
Planning
Commission Public
Hearing;
Recommendation
July 10, 2023

BoCC Review
**September –
December
2023**

**June 5
(optional)**
Joint Planning
Commission
Work Session 2

**August
2023**
City Council
Review

NEXT STEPS

- June 5 - Work Session #2
(If Necessary)
- July 10 - Joint Public Hearing &
Work Session
- ***Optional Motion:***
*Move to set a public hearing for July
10, 2023 on the Yelm Joint Plan.*



QUESTIONS?

Project Contacts:

Thurston County

Amelia Schwartz, Associate Planner
amelia.schwartz@co.thurston.wa.us
360.968.9923

City of Yelm

Gary Cooper, Building and Planning Manager
garyc@yelmwa.gov
360.458.8408

