

THURSTON



2045

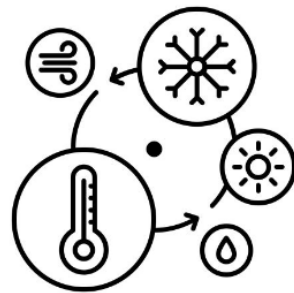
Housing and Climate Elements Update

May 1, 2024

Overview of the Presentation

Housing and Climate Elements

- Tasks and objectives
- Overall approach
- Preliminary findings
- Next steps





New Requirements for Housing Element

- Present housing needs by income level
- Present needs for emergency housing, emergency shelters, and permanent supportive housing
- Plan for sufficient land capacity for these housing needs
- Accommodate moderate density housing options within Urban Growth Areas (UGAs)
- Document programs and actions needed to achieve housing availability
- Address racially disparate impacts (RDI), displacement, and exclusion
- Update goals, policies and regulations for implementation



Housing Element Covers

- Land Capacity Analysis
- Housing Needs Assessment
- Adequate Provisions
- Housing Barriers and Racially Disparate Impact (RDI) analysis
- Updated goals, policies and regulations
- Public engagement



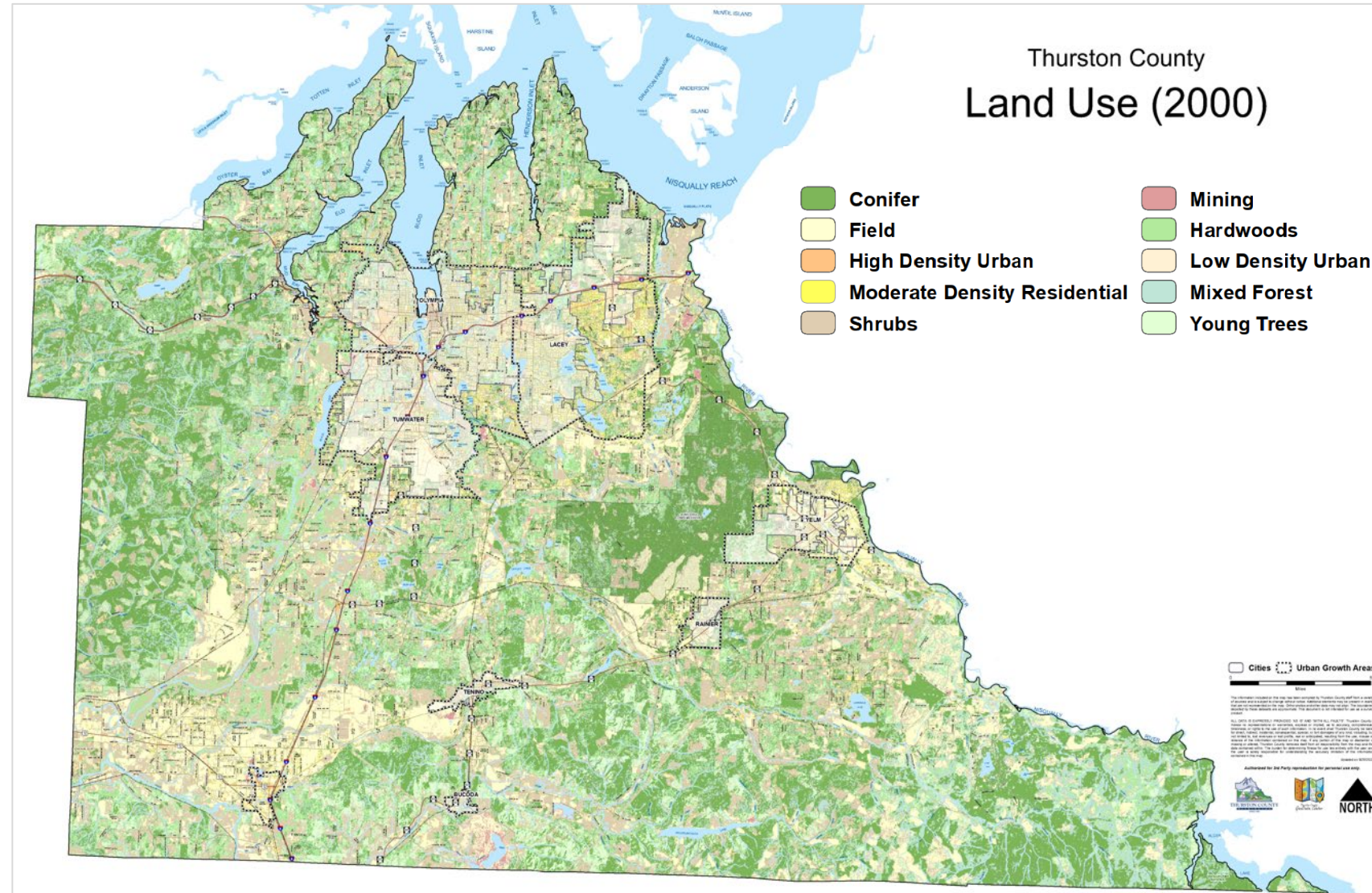
Housing Allocations by Income 2020 - 2045

	Total	Income Level (Percent of Area Median Income)								Emergency Housing
		0-30%		30-50%	50-80%	80-100%	100-120%	120%+	Seasonal/ Migrant	
		PSH	Non-PSH							
	Housing Units									
Bucoda	134	7	13	0	5	39	24	47	0	2
Lacey	5,154	335	849	1,053	210	0	466	2,241	0	89
Olympia	12,644	818	2,011	2,777	264	973	1,087	4,714	0	218
Rainier	571	41	100	0	79	22	107	222	0	10
Tenino	519	32	62	0	0	115	102	208	0	9
Tumwater	6,676	513	1,211	1,033	541	400	636	2,342	0	115
Yelm	7,504	549	1,341	1,196	1,062	274	817	2,266	0	129
Unincorporated*	21,155	1,300	3,171	2,373	6,109	2,550	1,142	4,510	0	364
... Lacey UGA*	8,970	650	1,599	1,552	1,395	0	750	3,024	0	154
... Olympia UGA*	1,651	128	226	397	0	103	136	661	0	28
... Rainier UGA*	23	2	4	0	2	0	5	10	0	0
... Tenino UGA*	9	1	2	1	1	1	1	3	0	0
... Tumwater UGA*	2,516	181	439	364	439	190	199	704	0	43
... Yelm UGA*	144	8	19	25	0	0	34	58	0	2
... Grand Mound UGA*	310	21	52	34	97	40	16	50	0	5
... Rural*	7,531	311	832	0	4,174	2,214	0	0	0	130
Thurston County	54,356	3,594	8,758	8,431	8,270	4,373	4,381	16,549	0	936

Note: Analysis based on jurisdiction boundaries as of September 1, 2023. Numbers may not add to totals due to rounding. Numbers may not add to totals due to rounding. *HB 1220 does not require jurisdictions to allocate the unincorporated housing need to urban and rural areas, however the jurisdictions requested this information to inform future planning. Thurston County — in consultation with the cities — has discretion over how the housing need is allocated between urban and rural unincorporated areas as long as the total housing units (Column 1) does not change.

Land Capacity Analysis

- Measure capacity for new housing development.
- Provide sufficient capacity of land suitable for development.
- TRPC's Land Capacity and Sustainable Thurston alternative due in May/June 2024.
- Informs environmental review.



Housing Needs Assessment



- Who lives and works here?
- Types of housing available?
- Groups of people not able to find housing that is safe, affordable, and meets their needs?
- How much housing, and what types of housing, are needed?
- Sufficient buildable land capacity to accommodate growth and housing diversity?
- Are there gaps/ mismatches between the housing need and housing supply?



Image source: Thurston County Comprehensive Plan 2019



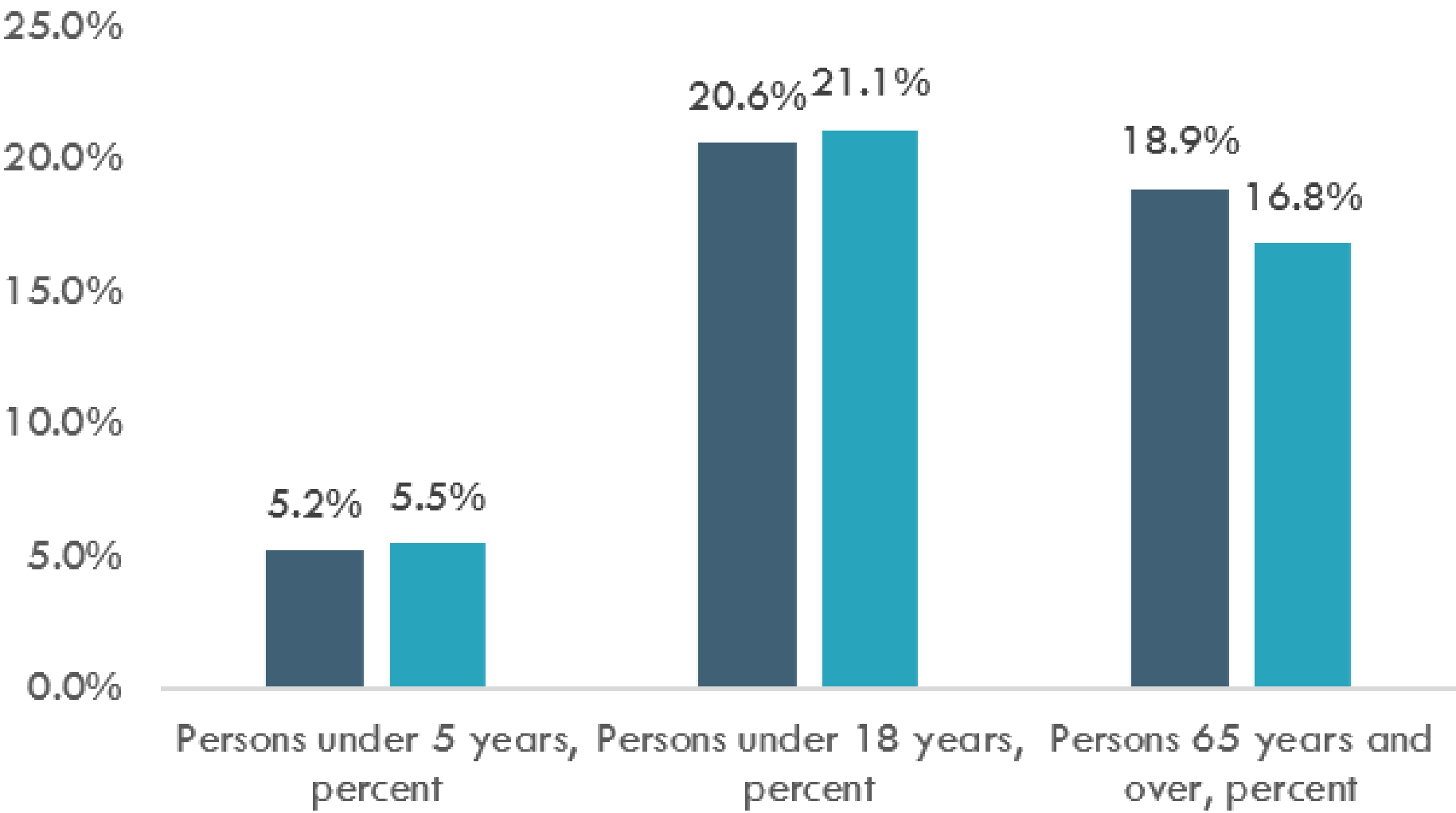
Adequate Provisions and RDI Analysis

- Incorporate consideration for lower-income households.
- Document actions needed to achieve housing availability including local funding gaps, barriers such as development regulations, and other limitations.
- Consider housing locations in relation to employment location.
- Consider role of accessory dwelling units (ADUs) in meeting housing needs.
- Communities of color experience higher rates of housing cost burden, substandard housing conditions and lower home ownership rates.
- Identify and address goals, policies, and regulations that may result in racially disparate impacts, displacement, and exclusion in housing.

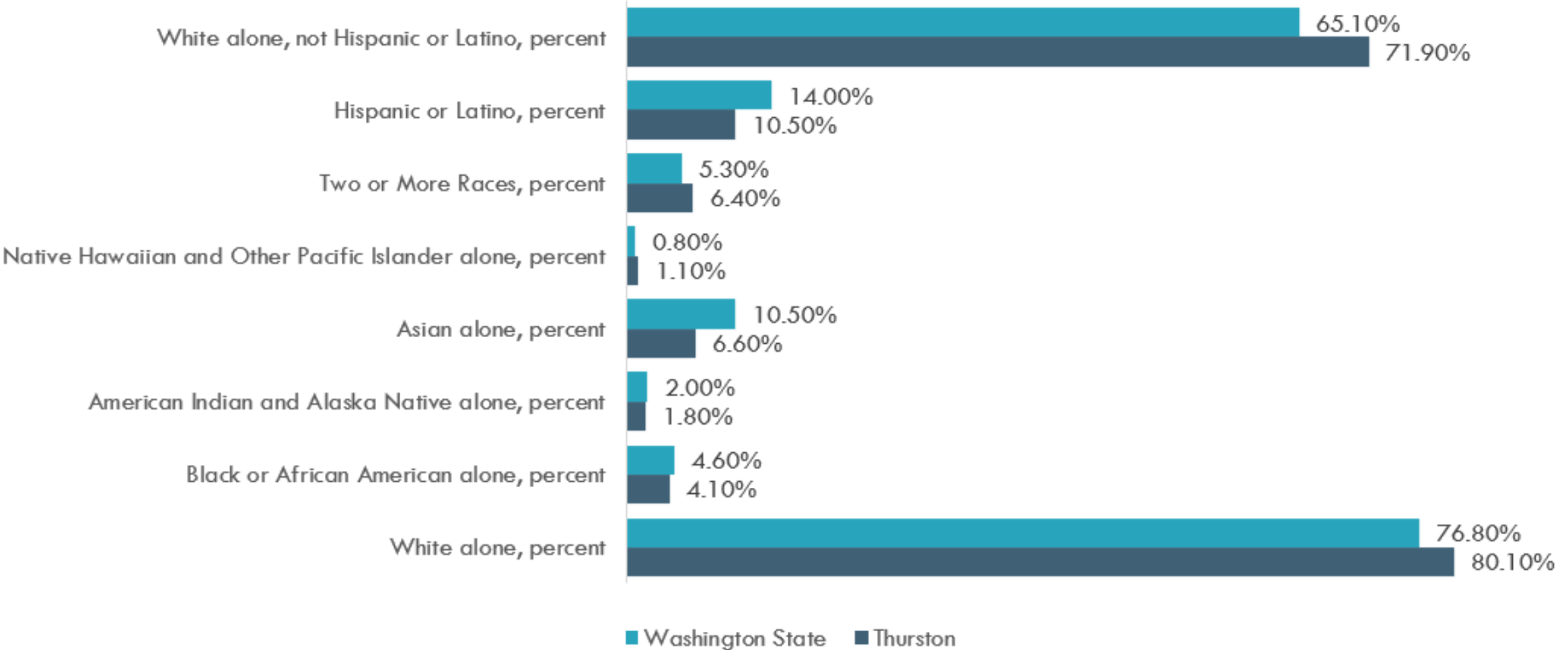
Community Characteristics Preliminary Findings



Population by Age

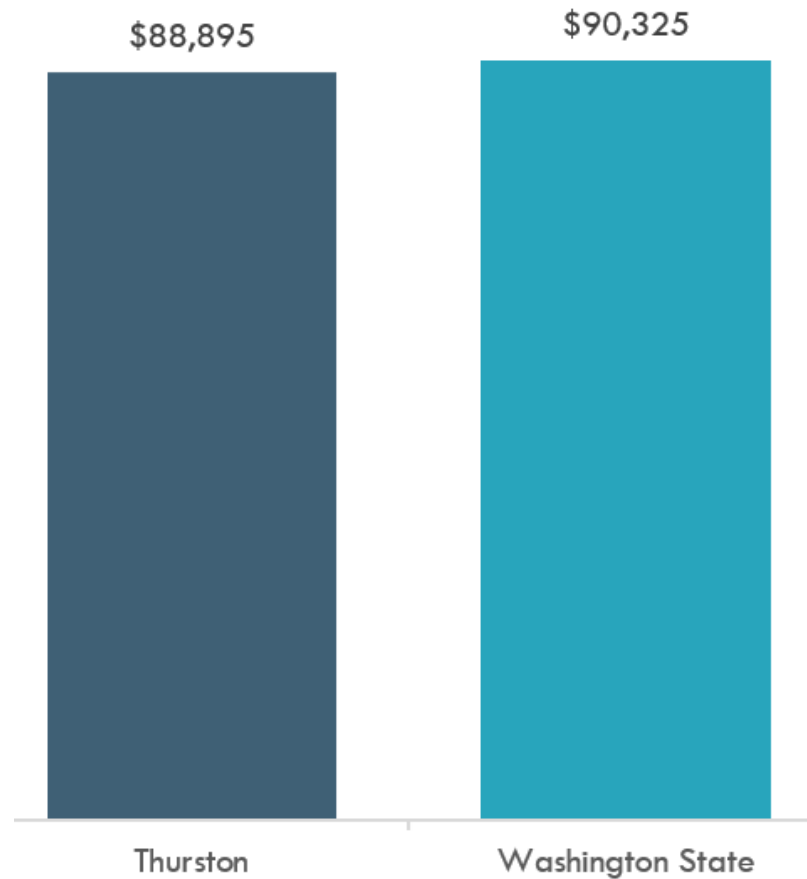


Population by Race

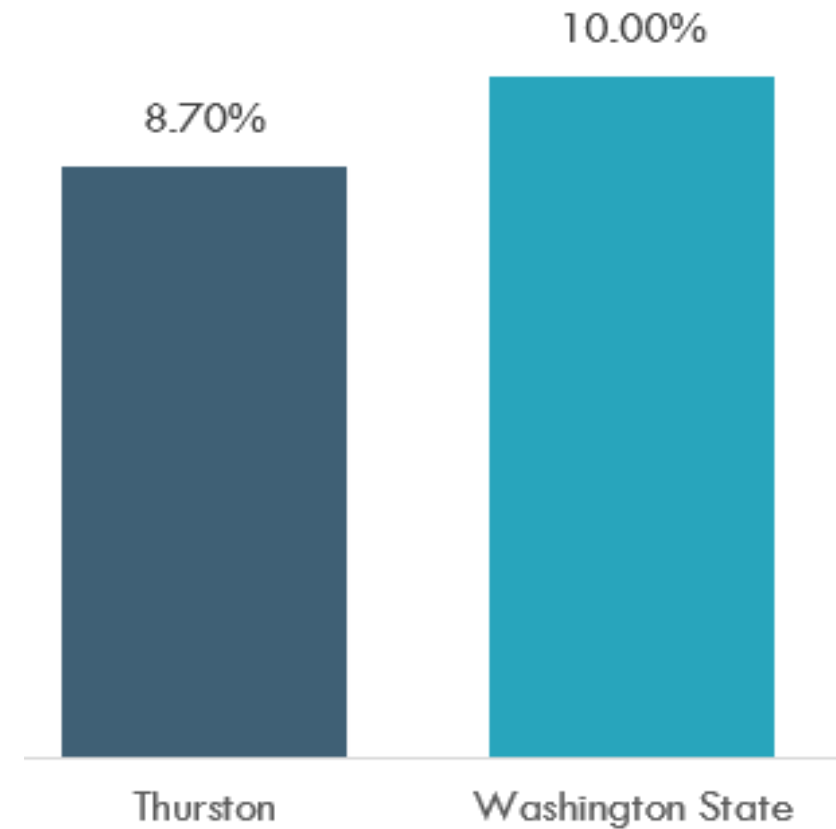


Income and Poverty

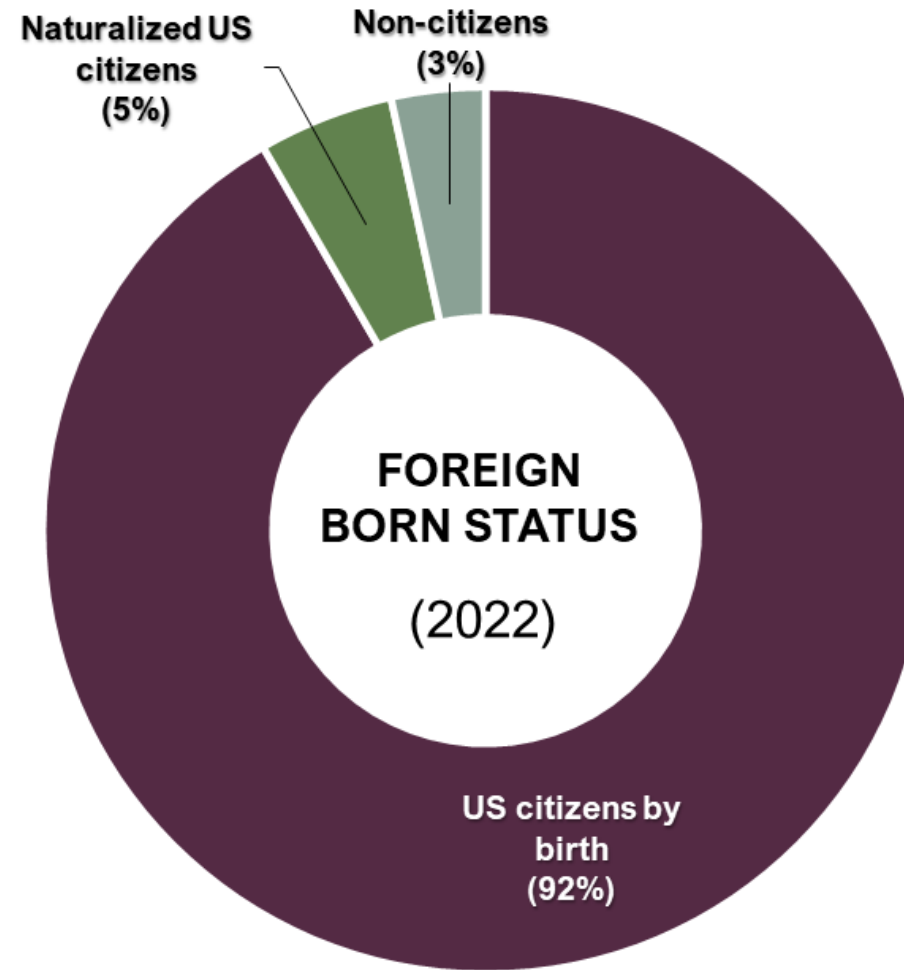
Median household income (in 2022 dollars), 2018-2022



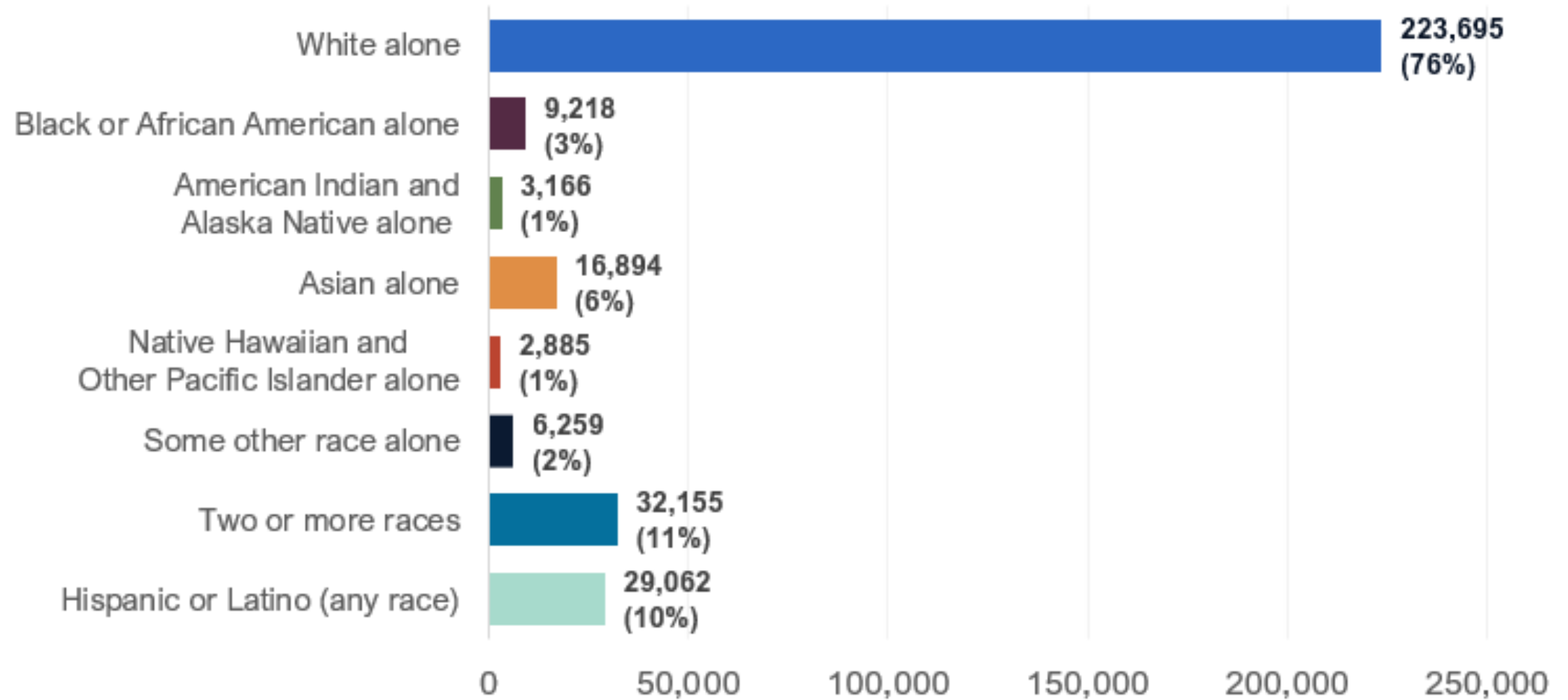
Persons in poverty, percent



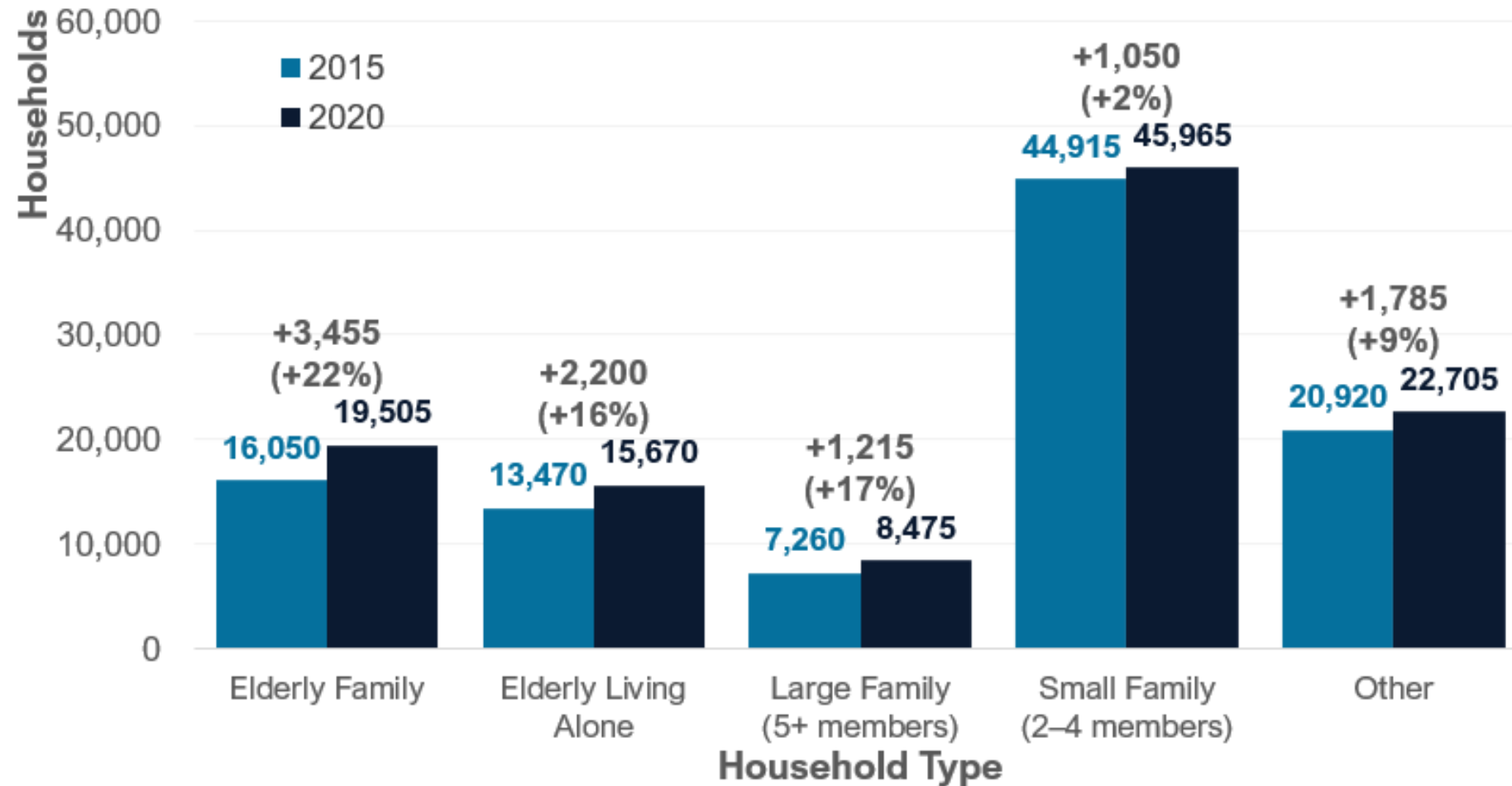
Foreign-Born Status



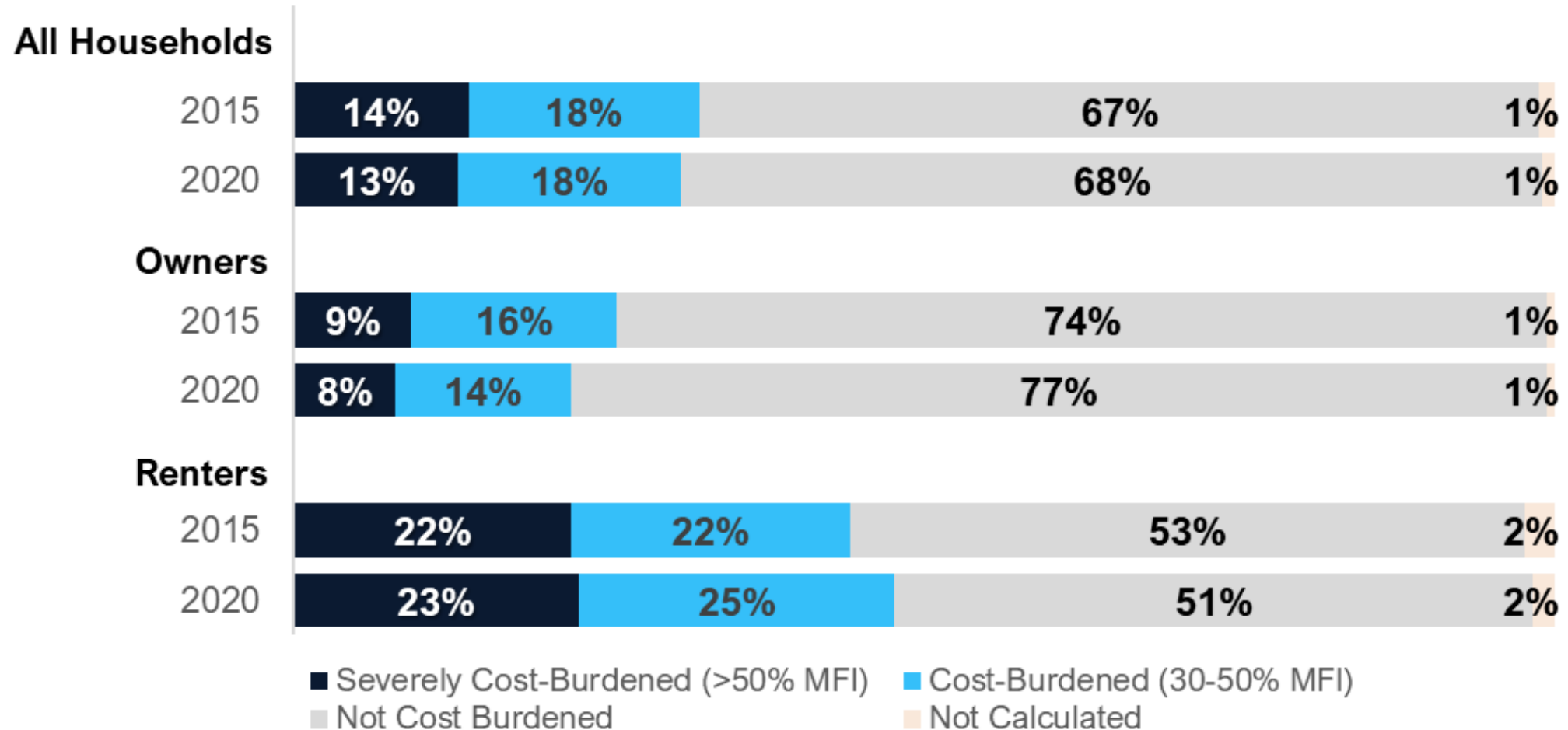
Race and Ethnicity



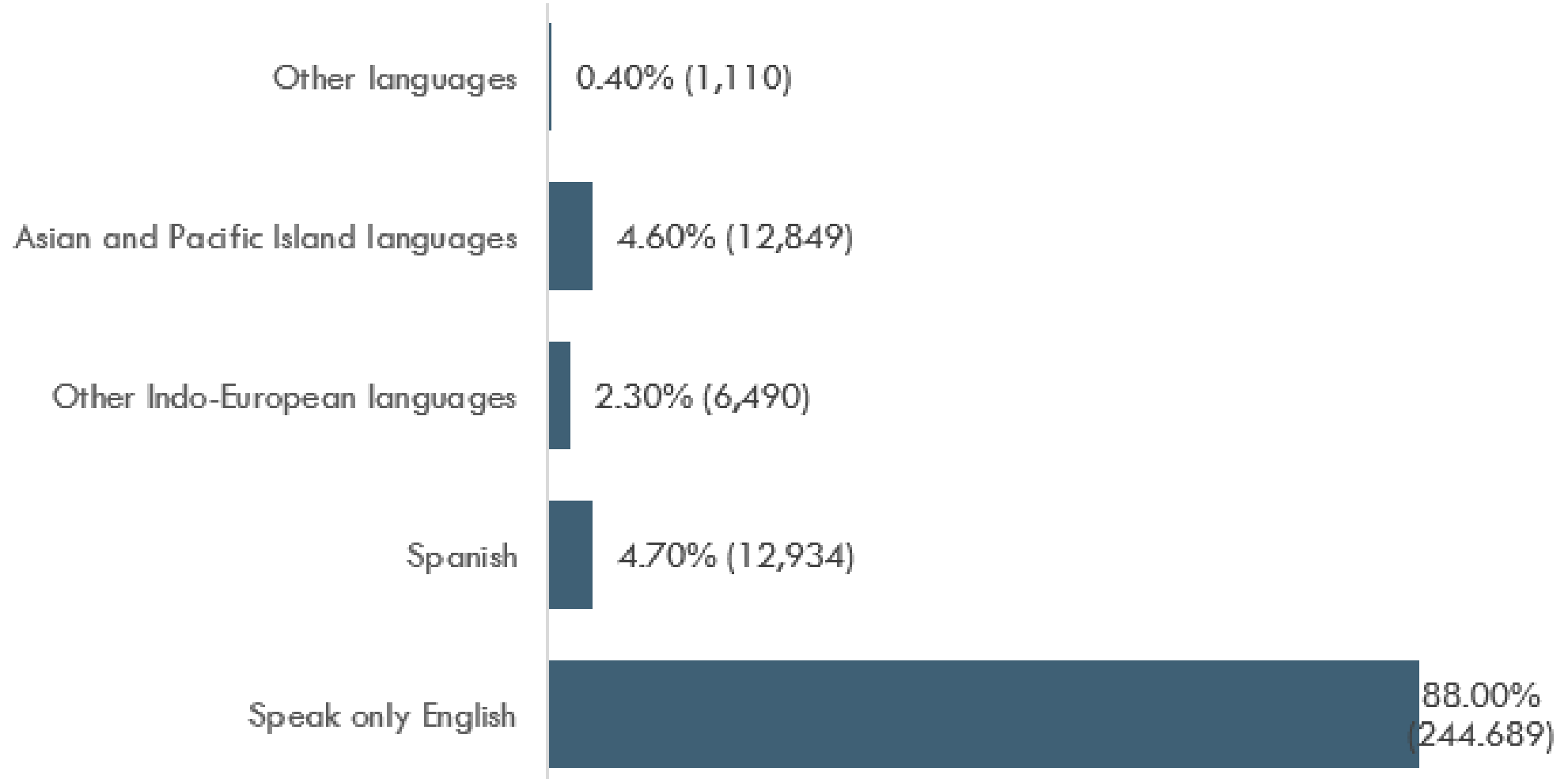
Household Types, 2015 and 2020



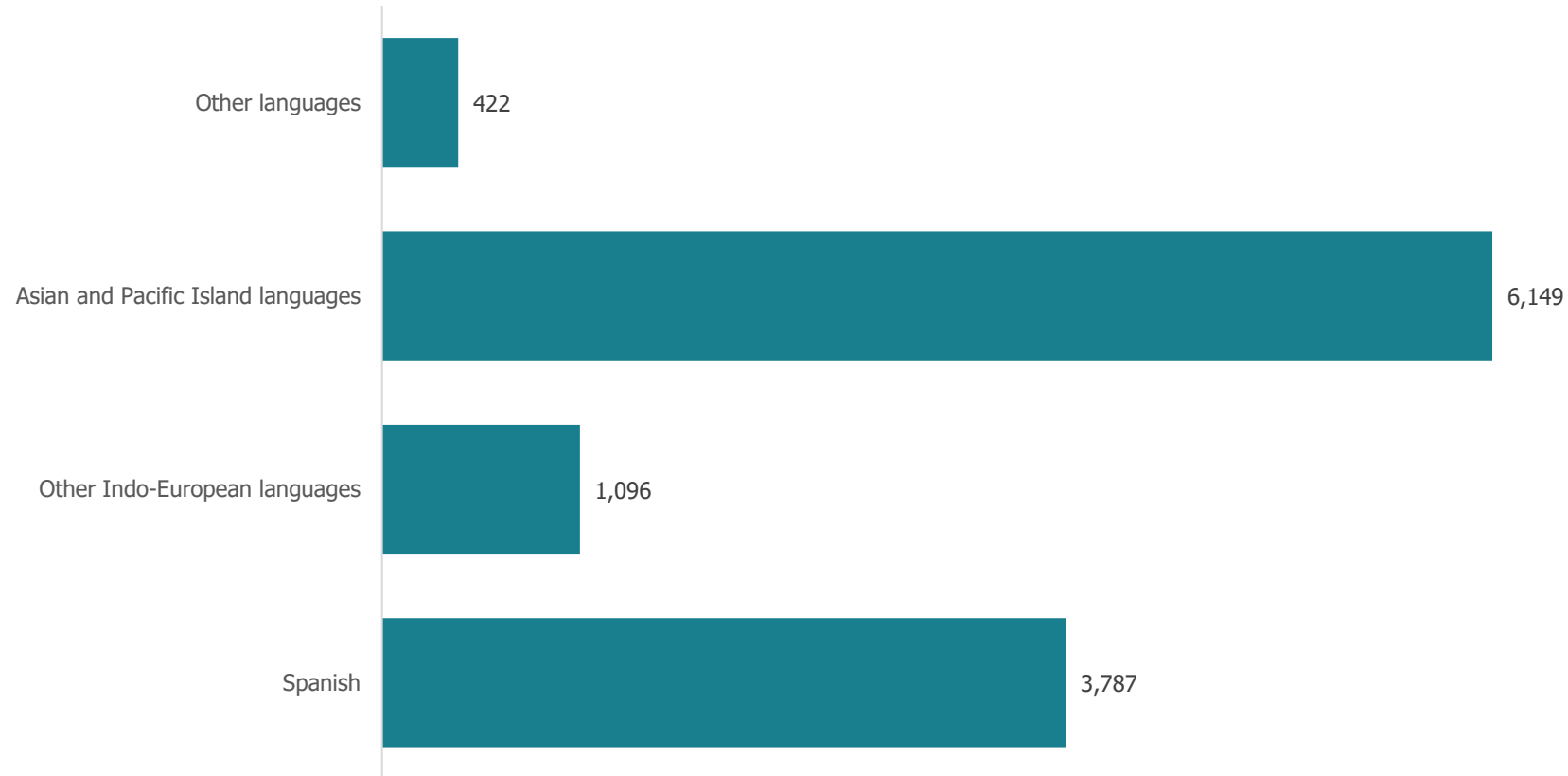
Cost Burden Status, 2015 and 2020



Language Spoken at Home, 2022

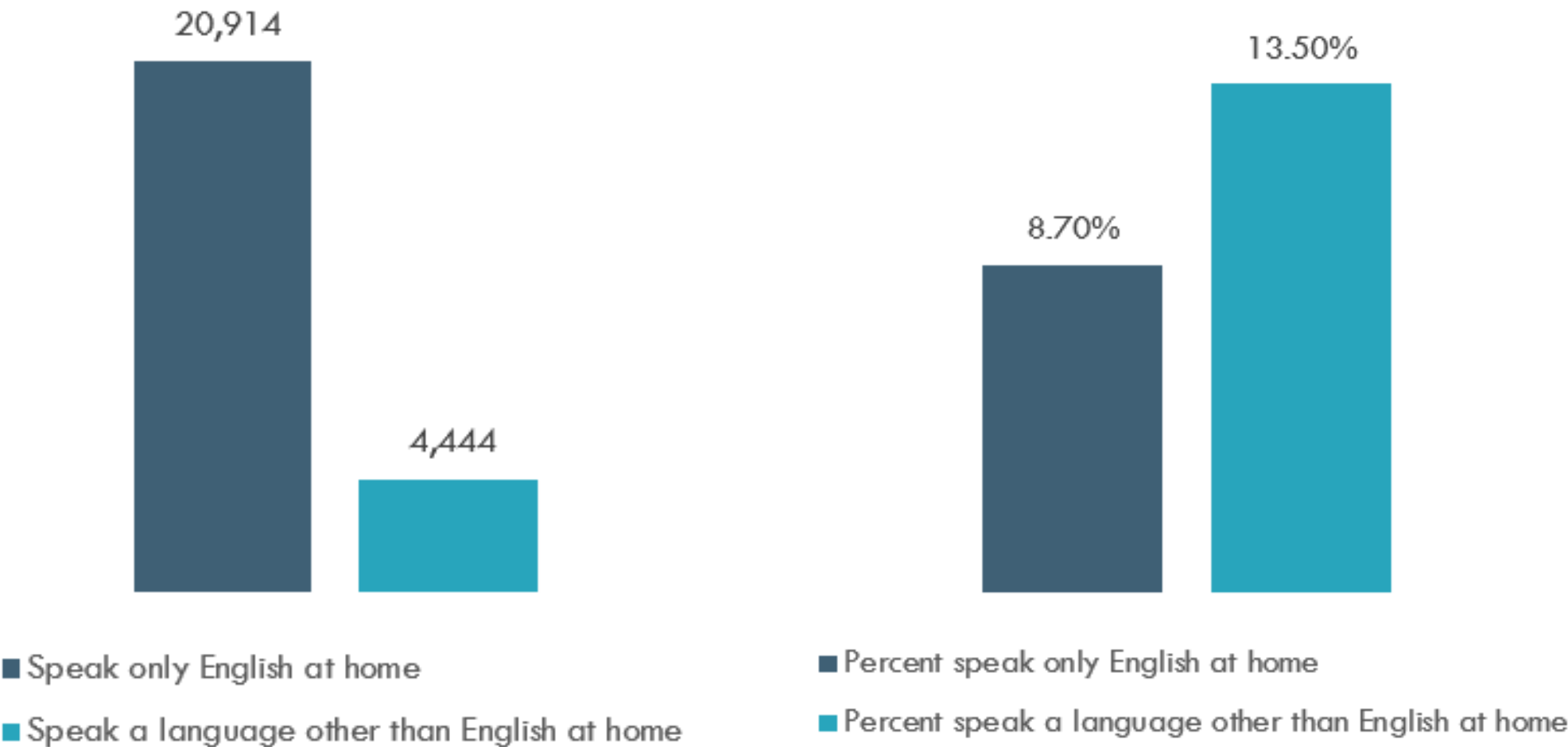


Speaks English Less Than Very Well, 2022



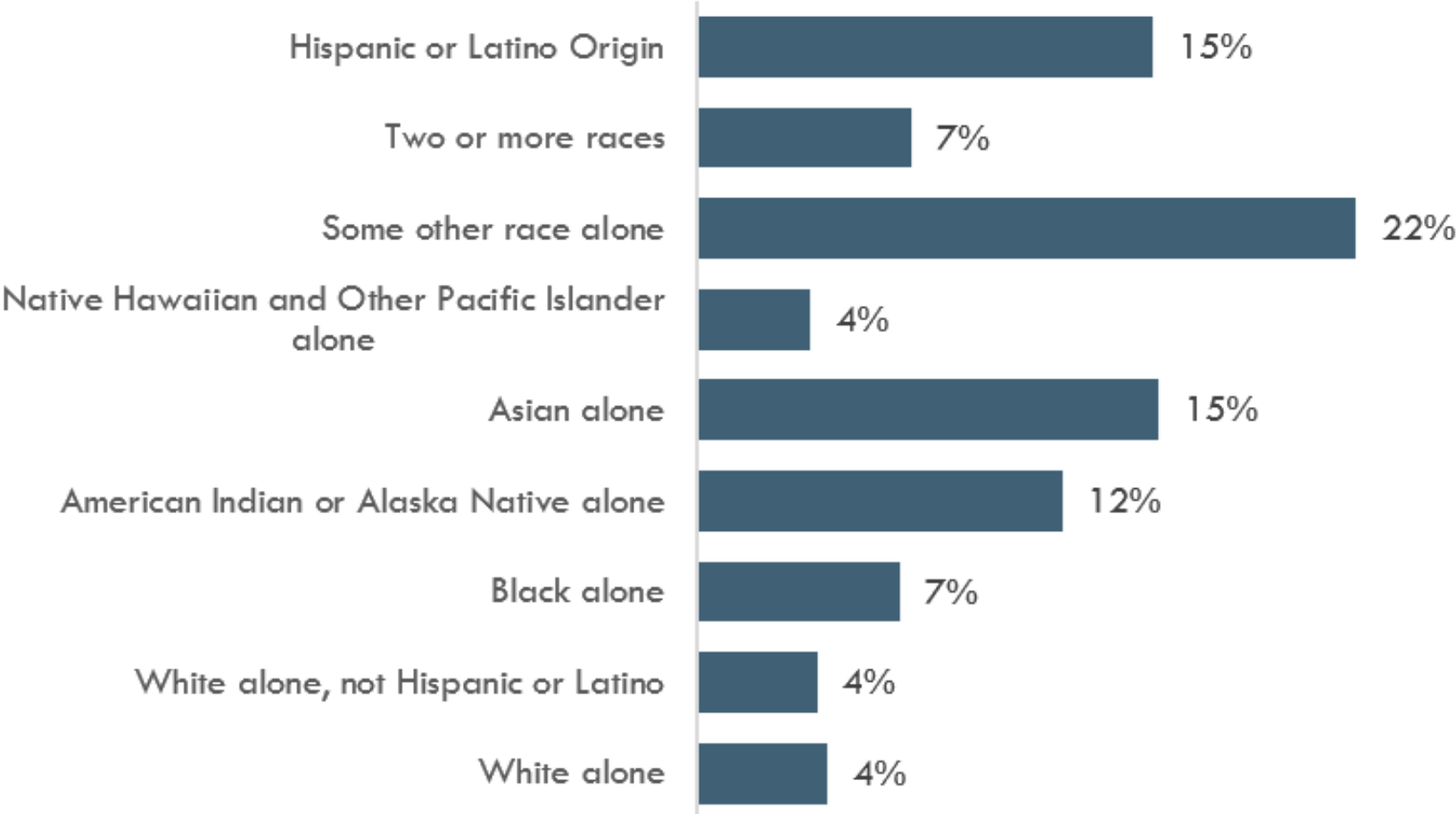
Poverty

Thurston County Language Spoken at Home for Population Below Poverty and the Percentage Share in Each Group, 2022



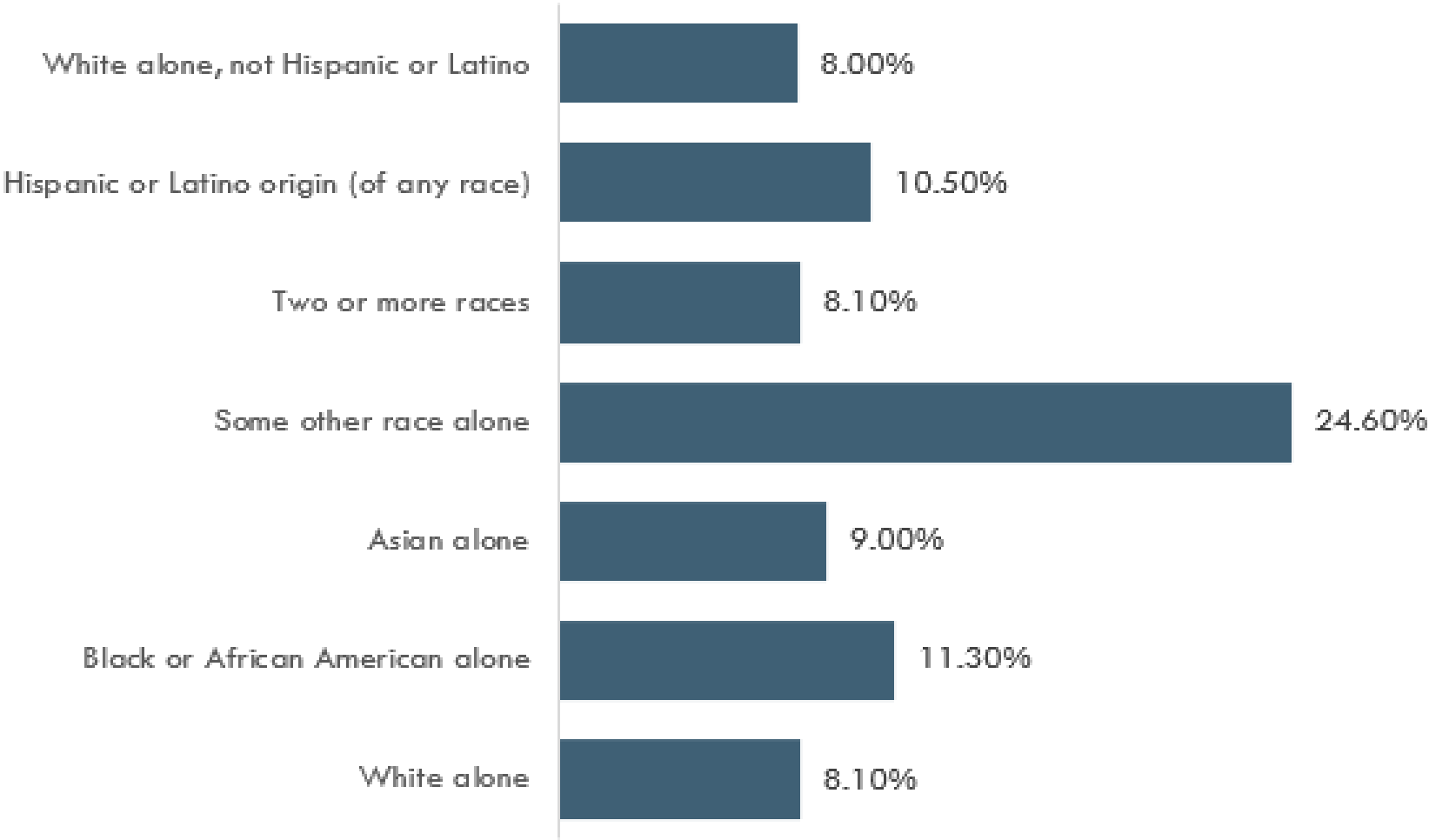
Education by Race

Thurston County Percentage Race by Educational Attainment Below High School, 2022

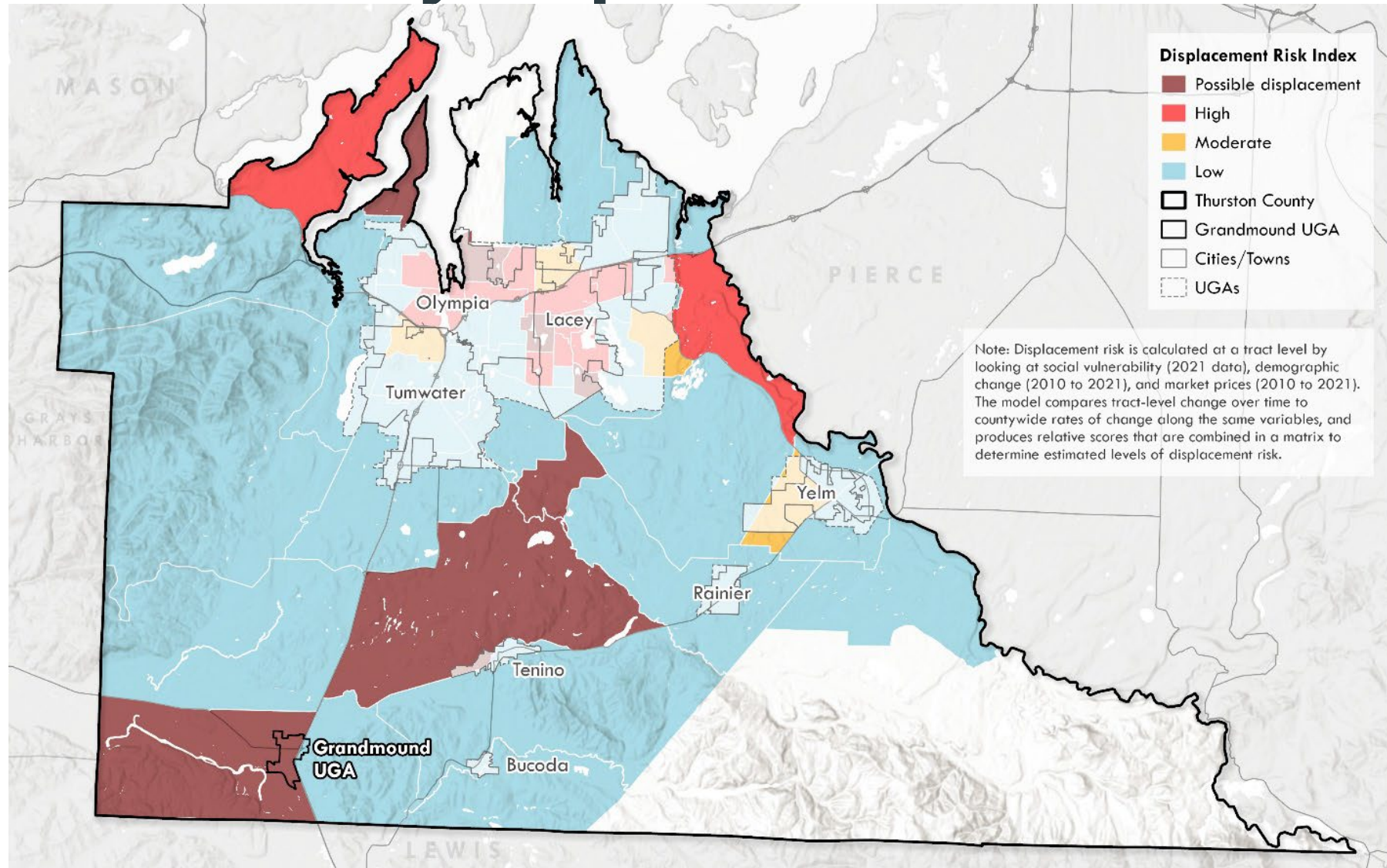


Poverty by Race

Thurston County Percentage of Population Below Poverty Level by Race, 2022

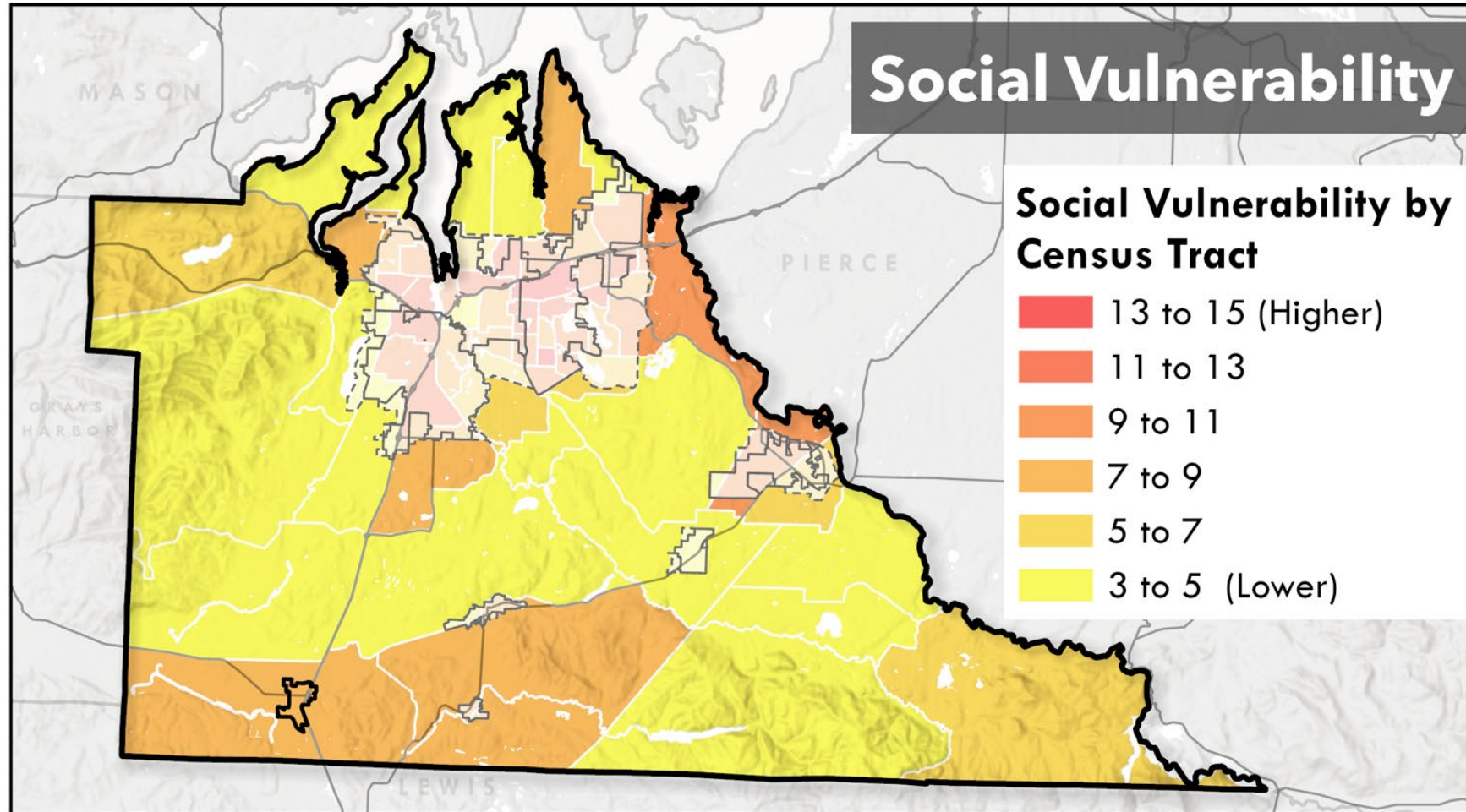


Thurston County Displacement Risk Index



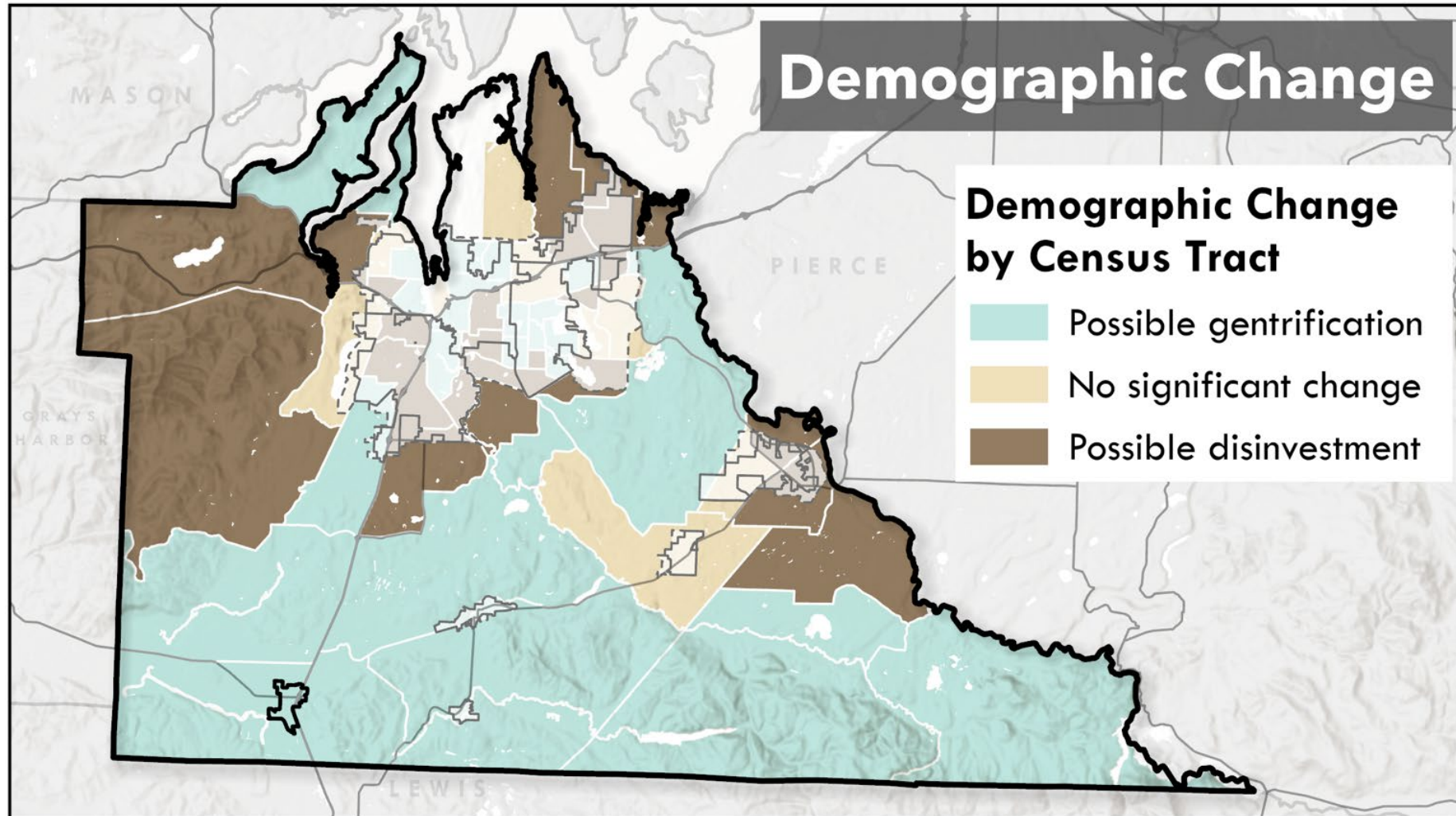
Displacement Risk Index – Social Vulnerability

Racial Makeup – Thurston County and Washington State (2023)
Thurston County
Displacement Risk Index Components



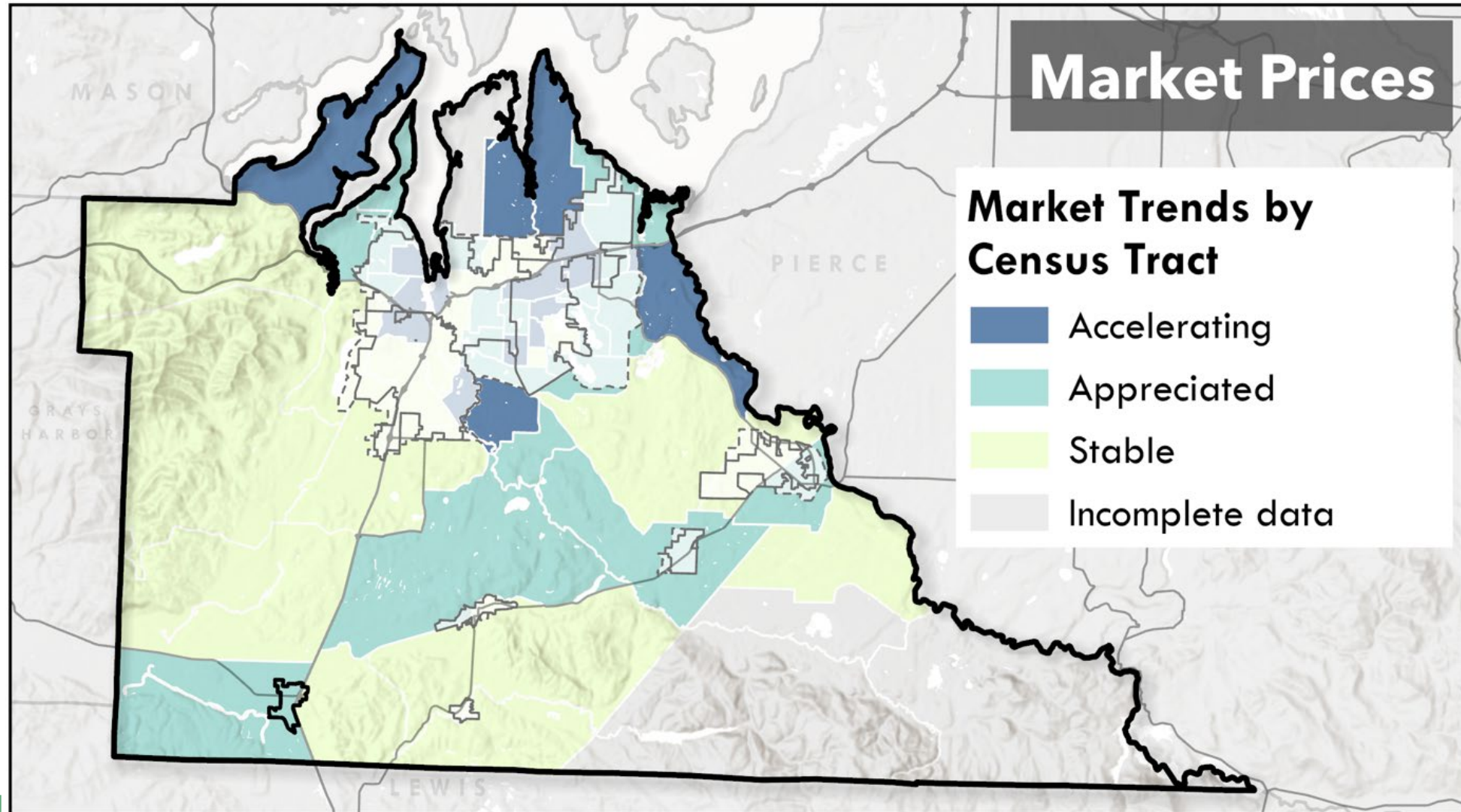
Displacement Risk Index – Demographic Change

Racial Makeup – Thurston County and Washington State (2023)
Thurston County
Displacement Risk Index Components



Displacement Risk Index – Market Prices

Racial Makeup – Thurston County and Washington State (2023) Displacement Risk Index Components

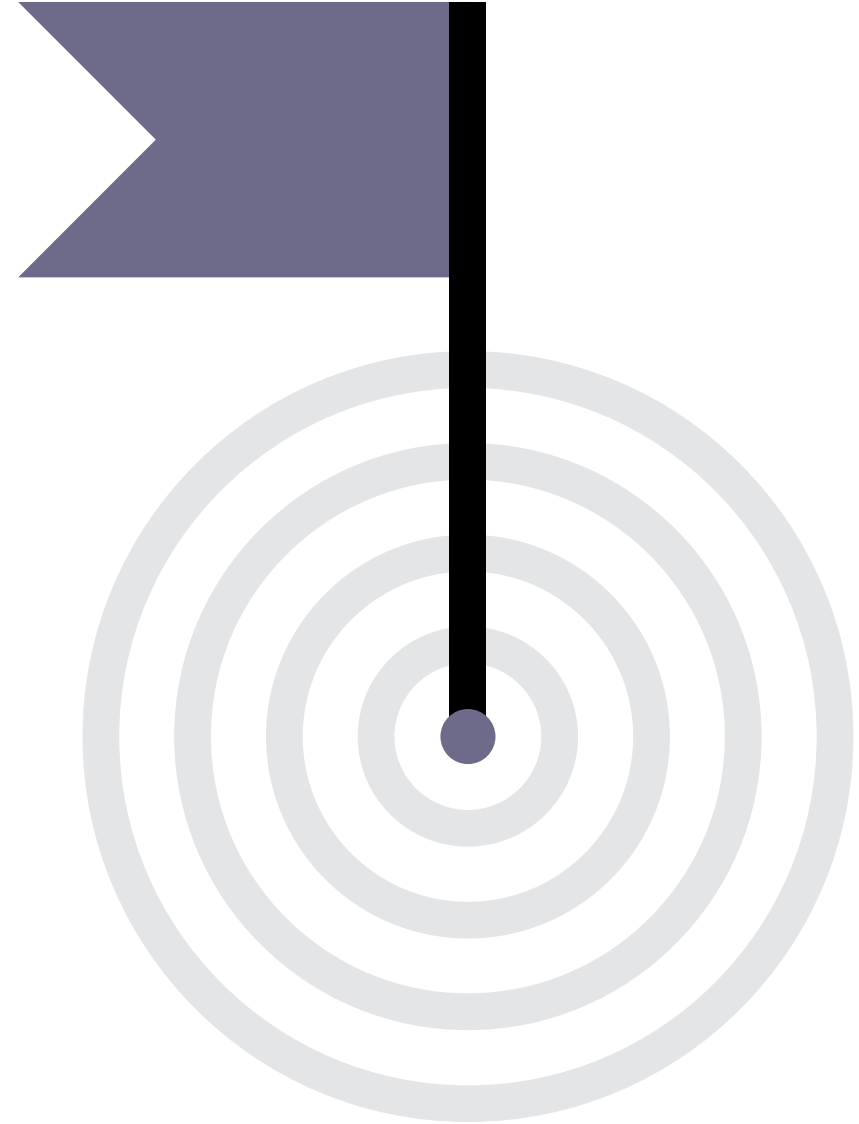


Climate Element – Approach Overview



Meeting Goals

- Discuss climate element scope of work tasks and associated timeline and generate a shared understanding of success.
- Outline resilience sub-element objectives and approach.
- Outline GHG emissions reduction sub-element objectives and approach.



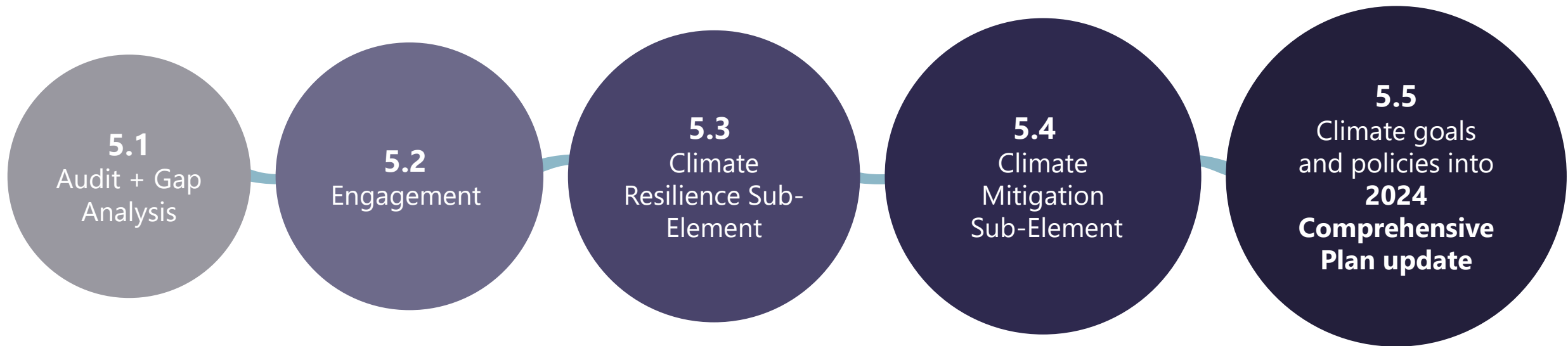
Climate Element Goals

Develop a **Climate Element** that is:

- Compliant with HB-1181 requirements.
- Informed by data-driven analysis and inclusive community engagement.
- Integrated with other relevant plans, including Mitigation/Adaptation Plans and other comprehensive plan elements.
- Impactful toward achieving County climate goals, including reducing GHG emissions and building climate resilience.
- Supported by County staff, decision-makers, and community.
- Clear, feasible, and provides information needed to implement.



Scope of Work

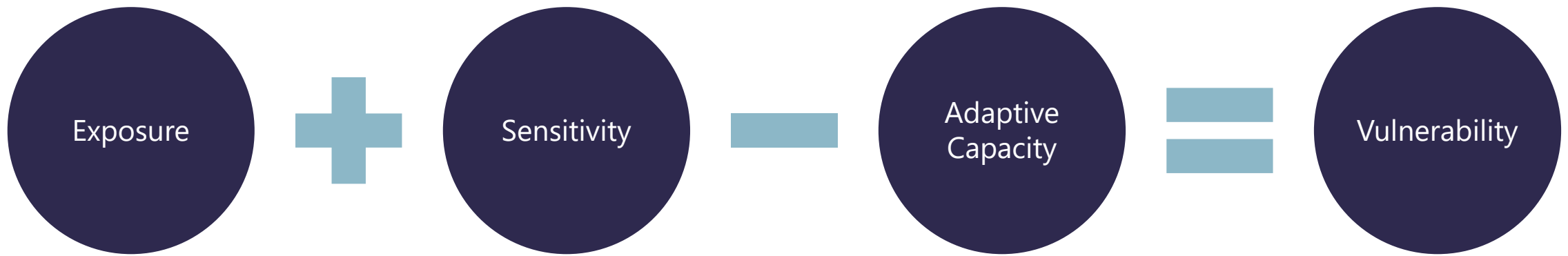


Vulnerability Assessment and Resilience Sub-Element

- Overview
- Baseline Climate Change Impacts
- Potential Focus Areas
- Vulnerability Methodology
- Discussion Questions



Overview of Climate Vulnerability Assessment

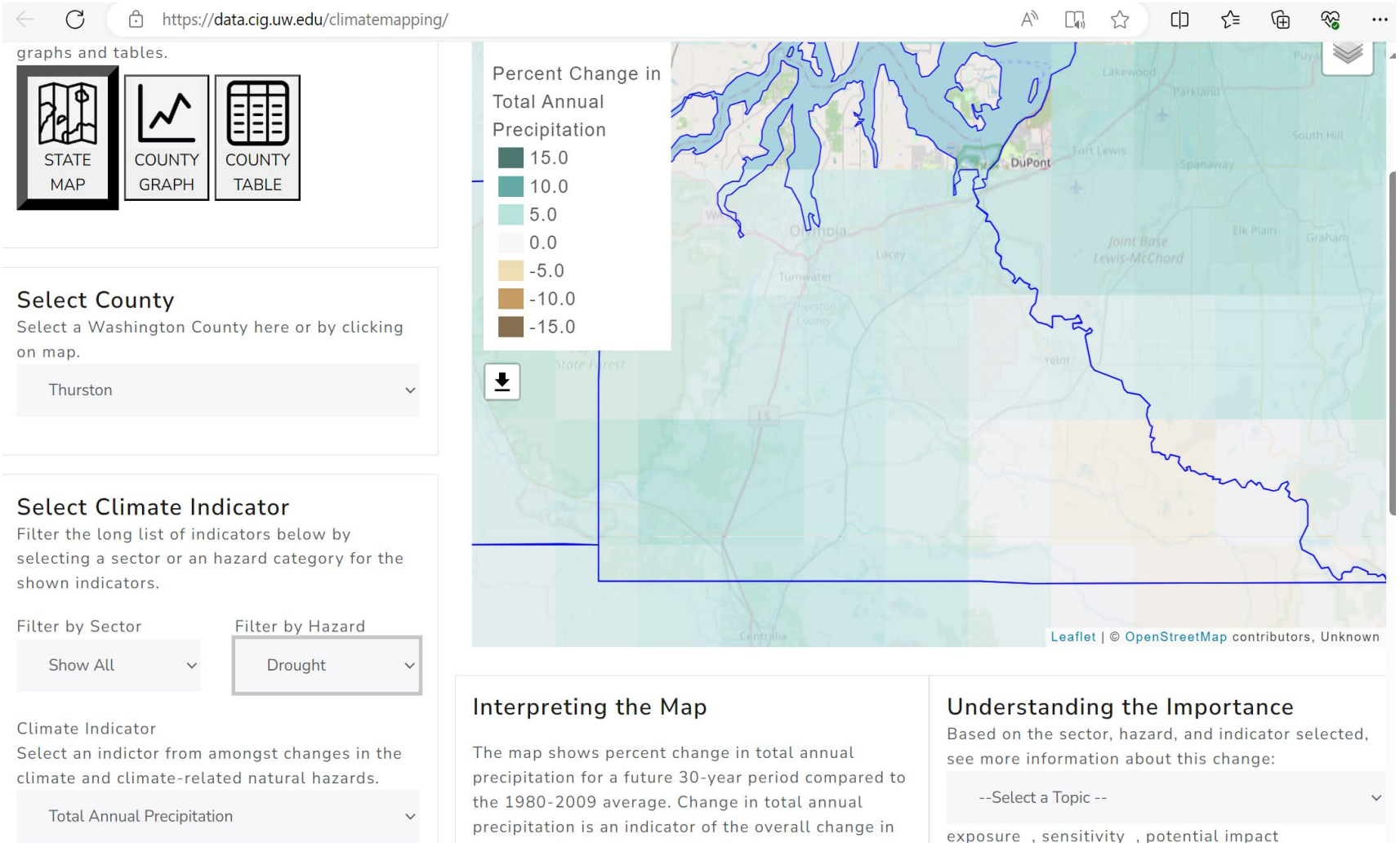


Baseline Climate Change Impacts

- **Variety of resources**

- Climate Impacts Group's (UW CIG) Climate Mapping for a Resilient Washington (CMRW).
- Downscaled variables from federal agencies (e.g., EPA, NOAA, USFS)

- **Document audit and review (SAS).**



Climate Vulnerability Assessment: Potential Focus Areas

VA Focus Area (proposed)	Comprehensive Plan Crosswalk
Human Wellbeing / Emergency Management	<ul style="list-style-type: none">▪ Public Health and Emergency Management▪ Cultural Resources▪ Social Services▪ Community Amenities (parks, trails, open space, food systems)
Ecosystems and Water	<ul style="list-style-type: none">▪ Critical Areas▪ Surface Water & Groundwater▪ Stormwater▪ Shorelines
Infrastructure	<ul style="list-style-type: none">▪ Energy▪ Waste Management▪ Transportation (roads, transit, active)▪ Water supply and Wastewater
Land Use and Economic Development	<ul style="list-style-type: none">▪ Building Design and Regulations▪ Growth Strategy and Zoning▪ Housing Affordability & Accessibility▪ Businesses▪ Urban/Industrial Economic Development
Natural Resource Lands and Rural Livelihoods	<ul style="list-style-type: none">▪ Agriculture▪ Forestry

Vulnerability Methodology

Relative Vulnerability at Census Tract Level



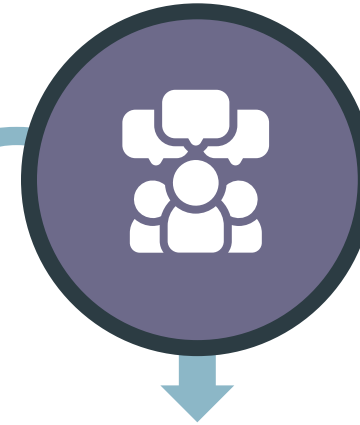
- ✓ Human wellbeing and emergency management

Spatial Analysis of Vulnerability



- ✓ Ecosystems and water
- ✓ Infrastructure
- ✓ Natural Resource Lands and Rural Livelihoods

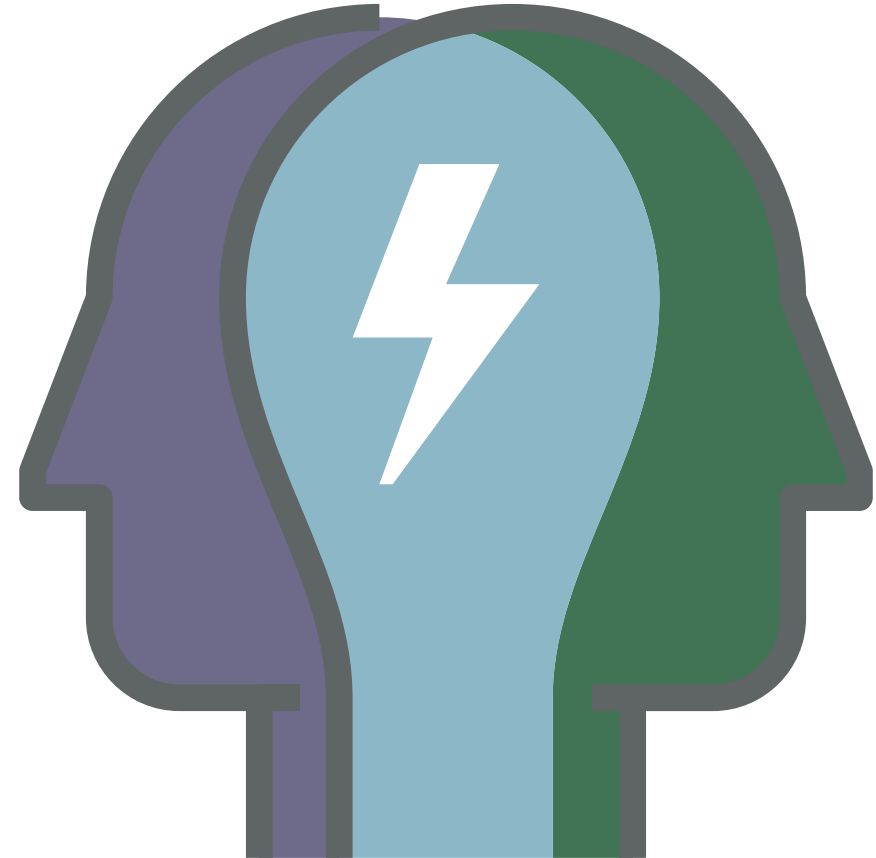
Qualitative Research and Assessment



- ✓ All focus areas

Discussion Questions

- **Are there specific considerations** – such as critical assets, areas of concern, or community groups – that we need to pay particular attention to?
- **Additional questions or ideas** on the vulnerability assessment?
- **Which stakeholders/organizations are crucial** to engage regarding these policies?



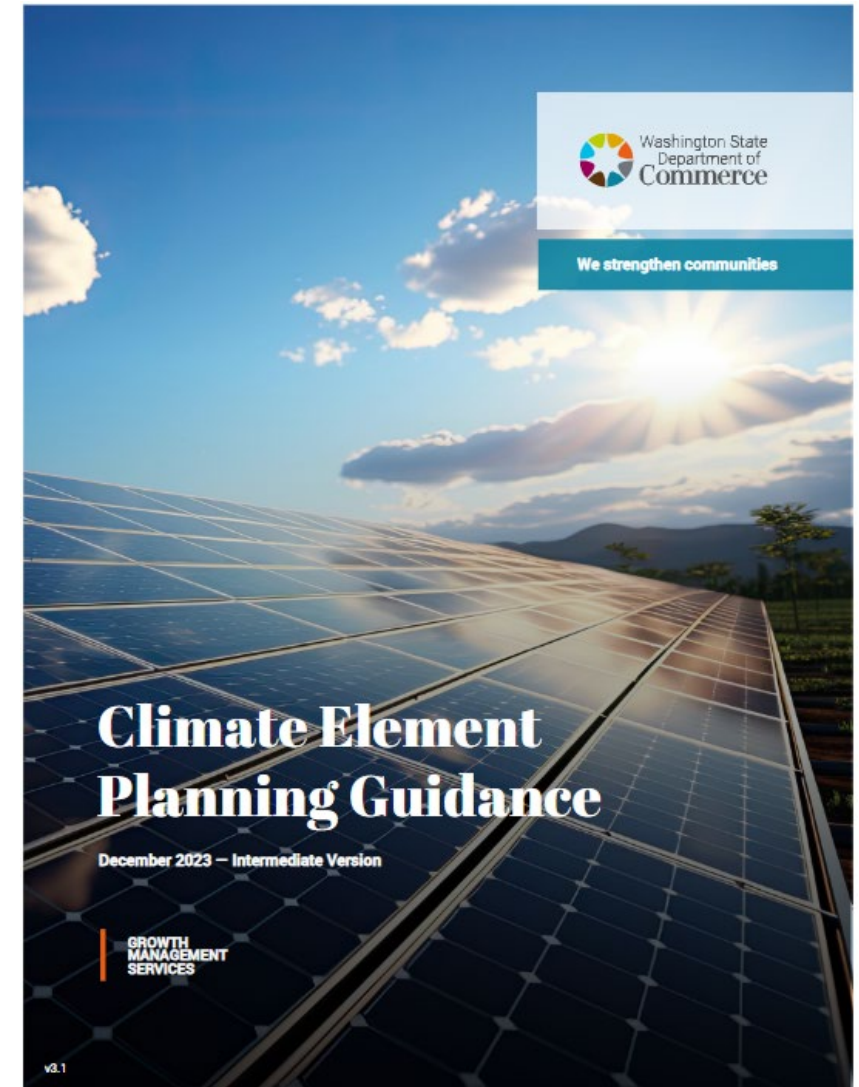
GHG Emissions Reduction Sub-Element

- Commerce Guidance:
 - Overview
 - Minimum Requirements
 - Pathways
 - Steps
- Our Approach
- Discussion Questions



Commerce Guidance: Overview

- **Objective:** Measure, reduce, and eliminate local GHG emissions and per-capita VMT via comprehensive plan goals and policies.
- **Target:** Net-zero emissions by 2050 (both total and per-capita emissions)
- **Goals and policies** should address, at a minimum:
 - Transportation
 - Buildings & Energy
 - Zoning & Development



Commerce Guidance: Minimum Requirements

Sub-Element and development regulations must identify actions that will:

#1

Reduce **overall GHG emissions** within jurisdictions without increasing emissions elsewhere in WA

#2

Reduce **per-capita VMT** without increasing emissions elsewhere in WA

#3

Prioritize reductions that **benefit overburdened communities** to maximize co-benefits

Commerce Guidance: Pathways

Pathway 1

Conduct GHG Emissions Estimate

Develop GHG reduction goals and policies using Ecology framework.

Pathway 2

Conduct Vehicle Miles Traveled (VMT) Study or Evaluation

Develop per capita VMT/GHG reduction goals and policies. Only transportation emissions sources are evaluated.

Pathway 3

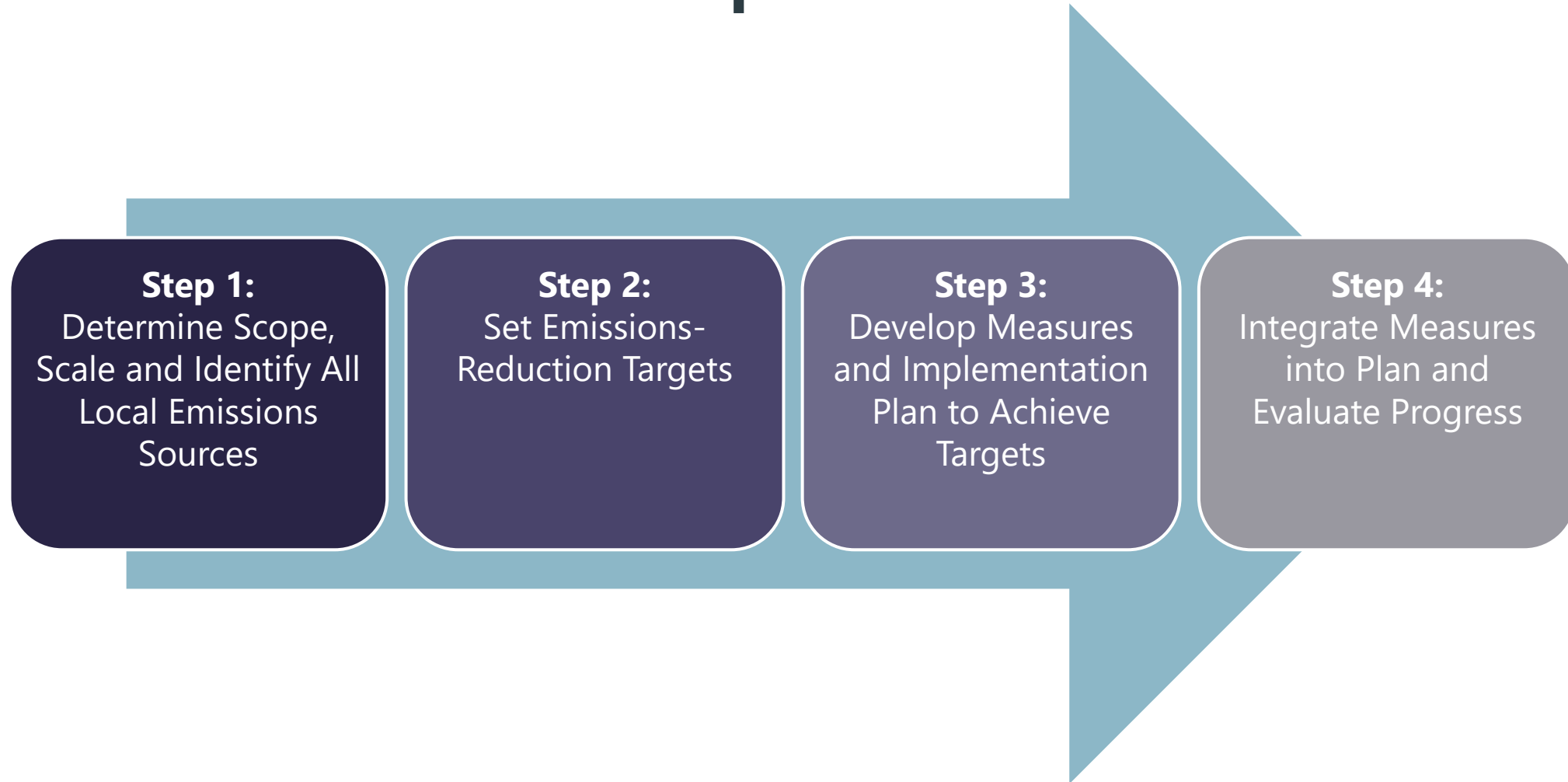
Create GHG Emissions Inventory

Develop GHG reduction goals and policies based on emissions inventory modeling results.

Integrate goals and policies into comprehensive plan

Pathway 3 recommended for counties required to create GHG reduction sub-element (including Thurston)

Commerce Guidance: Steps



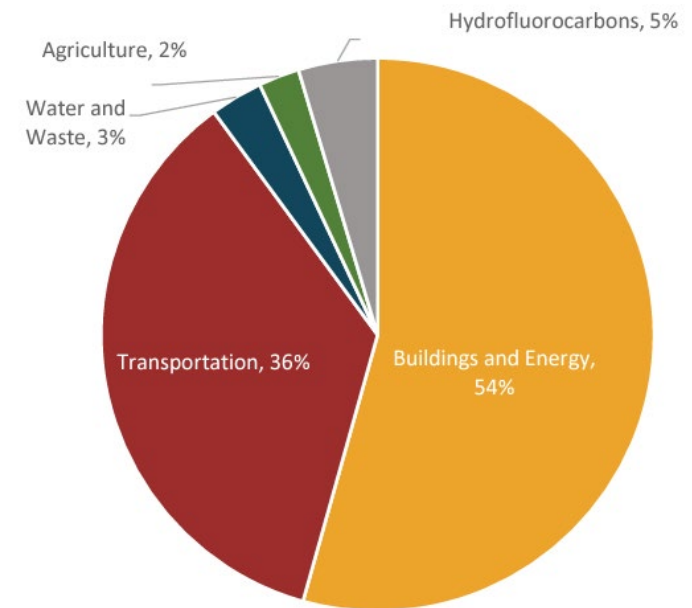
Our Approach



Determine Scope, Scale and Identify All Local Emissions Sources

2022 inventories currently underway:

- Communitywide GHG emissions inventory
- Government operations GHG emissions inventory



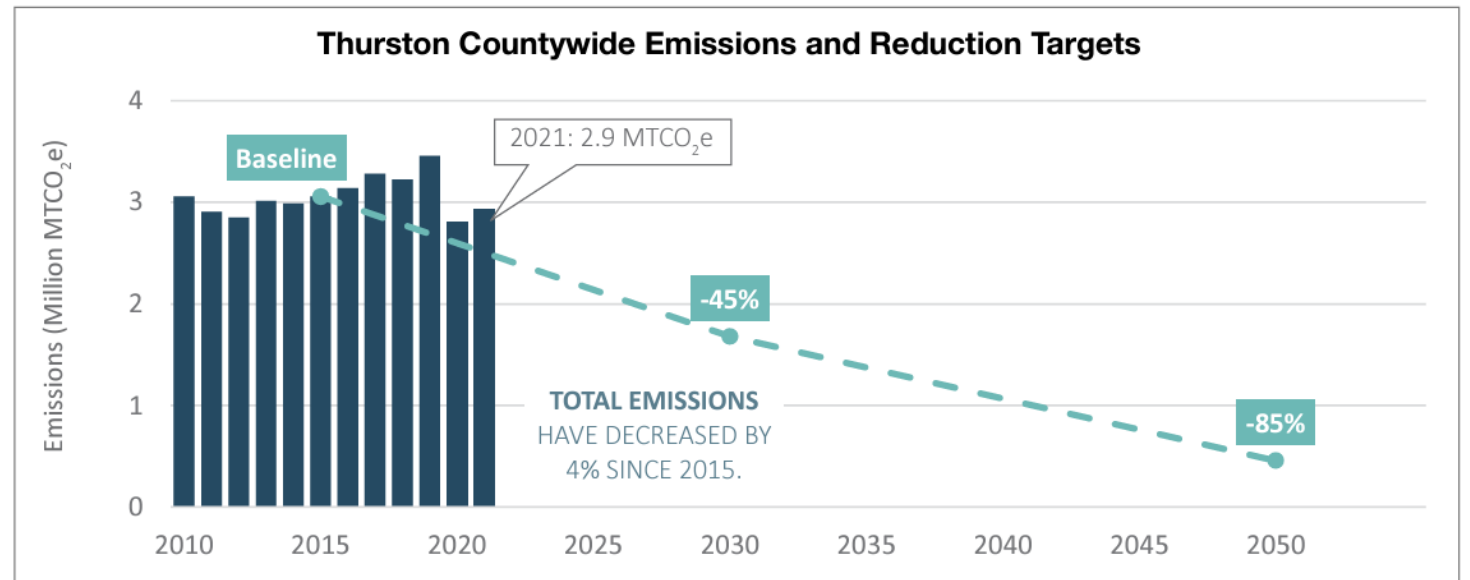
Our Approach



Set Emissions-Reduction Targets

Align with:

- Current County targets
- Commerce guidance



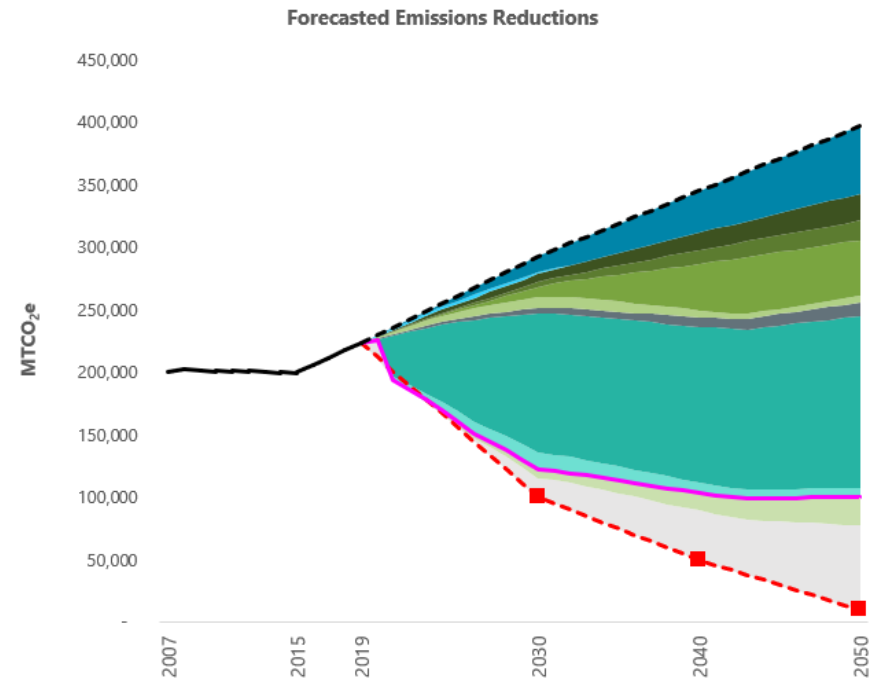
Our Approach



Develop Measures and Implementation Plan to Achieve Targets

Draw from:

- Public/stakeholder engagement
- Policy audit
- GHG inventory update & VMT analysis
- Commerce Menu of Measures
- GHG scenario analysis ("wedge") tool



Our Approach



Integrate Measures into Plan and Evaluate Progress

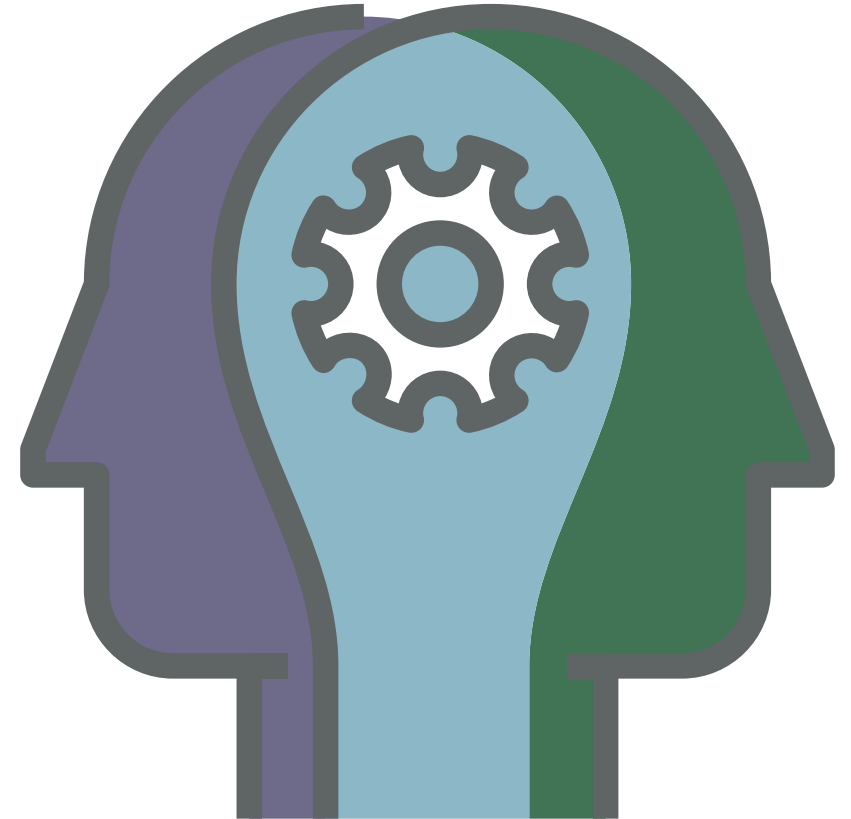
Plan for:

- Climate policy integration across the comprehensive plan update, with a focus on the Climate Element
- Policy implementation across County departments and agencies
- GHG emission monitoring & reporting (every five years at a minimum)

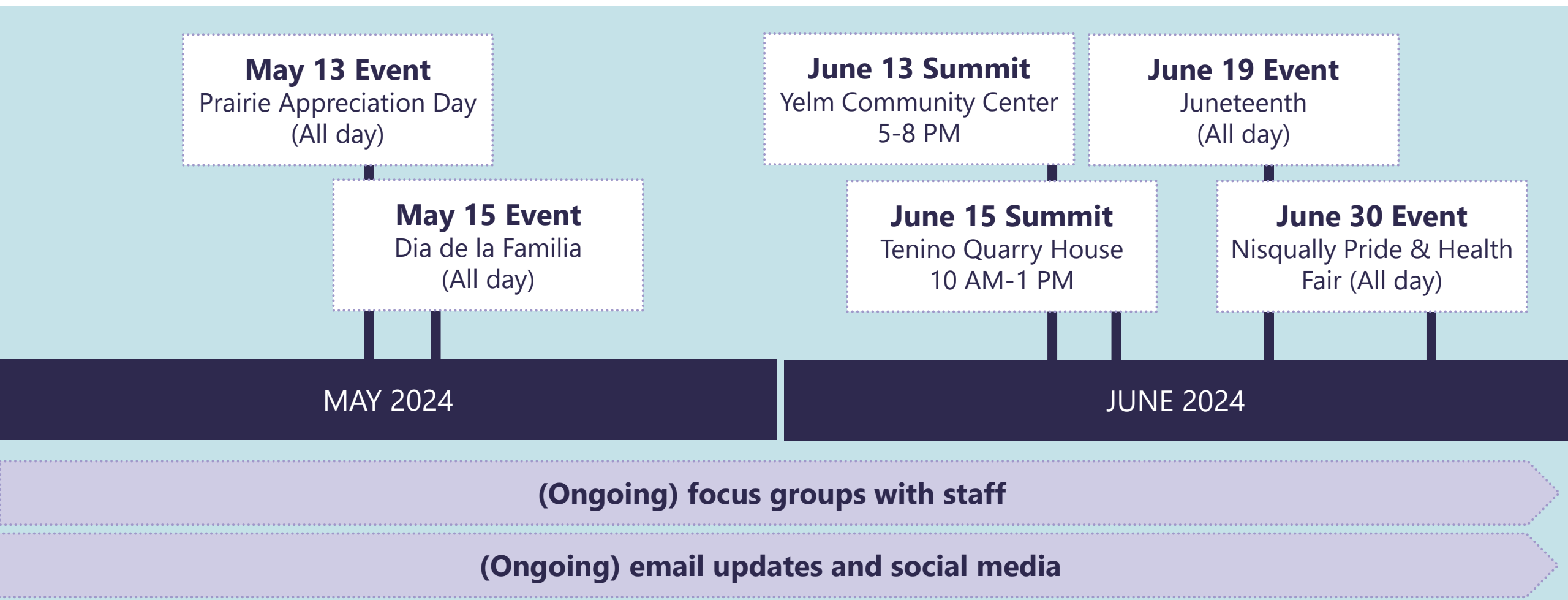


Discussion Questions

- **Recommendations for emission reduction target?**
 - Current: 45% reduction by 2030; 85% reduction by 2050.
 - Commerce guidance: Net-zero by 2050.
 - **What kinds of measures and policies are highest priority** for inclusion in GHG Emissions Reduction Sub-Element, especially related to:
 - Transportation.
 - Buildings & Energy.
 - Zoning & Development.
- **Which stakeholders/organizations are crucial** to engage regarding these policies?



Outreach and Engagement



Next Steps

- What's Next?



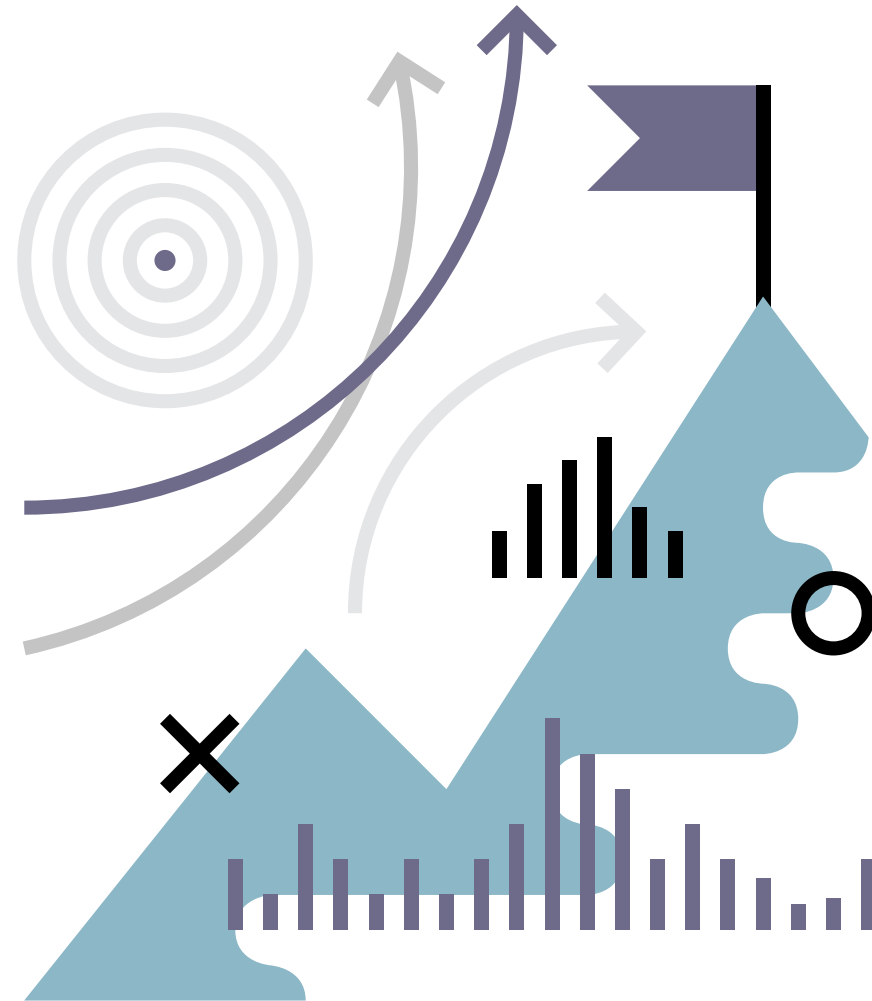
What's Next

June 13, 2024 – Yelm Community Center

- Address: 301 2nd St SE, Yelm, WA 98597
- Time: 5 P.M. to 8 P.M.

June 15, 2024 – Quarry House Community Center

- Address: 399 W. Park Ave Tenino, WA 98589
- Time: 10 A.M. to 1 P.M.



Next Steps

**Planning
Commission
Review**

Now to Oct 2024

**Planning
Commission
Public Hearing**

Oct to Nov 2024

**Environmental
Review
Environmental
Impact Statement**

Now to Oct 2024

**Board of County
Commissioners
Review**

Jan to Dec 2025

**Board of County
Commissioners
Final Action**

Dec 2025



Thank you!

Questions?