



EARTHWORK SERVICES, INC.

PO Box 640
1116 1st St.
Cosmopolis, WA 98537

Phone: (360) 533-2007 Fax: (360) 533-1618

Email: earthwork@earthworkservices.com

Web: www.earthworkservices.com

July 22, 2020

Earthwork Services Job# 38576

Paul Miller
Robert W. Droll
4405 7th Ave. SE, Ste. 203
Lacey, WA 98503

Exhibit A Earthwork

RE: Inspiring Kids Preserve

Dear Paul,

Enclosed please find grid elevation, cut/fill graphics, and volumes for this project, which was calculated using the average end area method and the following assumptions:

1. A **demolition** depth of **12"** was applied to the **existing heavy pavement, standard pavement, walk, buildings, crushed gravel, and quarry spalls.**
2. A **demolition** depth of **6"** was applied to the **existing asphalt.**
3. A **stripping** depth of **8"** was applied to the **rest of site.**
4. A depth of **22"** from design elevations to subgrade in the **heavy duty frontage pavement and heavy pavement.**
5. A depth of **20"** from design elevations to subgrade in the **walk, standard pavement, and crushed gravel passing shoulder.**
6. A depth of **16"** from design elevations to subgrade in the **crushed gravel trail.**
7. A depth of **12"** from design elevations to subgrade in the **quarry spalls.**
8. A depth of **8"** from design elevations to subgrade in the **landscaping.**
9. A depth of **22"** from finish floor elevations to subgrade in the **buildings.**

TOTAL RAW VOLUMES IN PLACE

(Volumes are in Cubic Yards)

Activity	Area (ft ²)	Cut Volume	Fill Volume	Strip/Demo Volume
Finish Site	56,118	3,312	463	1,795

Please call after you have reviewed this information if you have any questions.

* Raw volumes are calculated after existing terrain has been stripped, thus creating less cut and more fill of suitable material. Raw volumes have not been adjusted to reflect shrink or swell for compaction and expansion and are volumetric areas only.

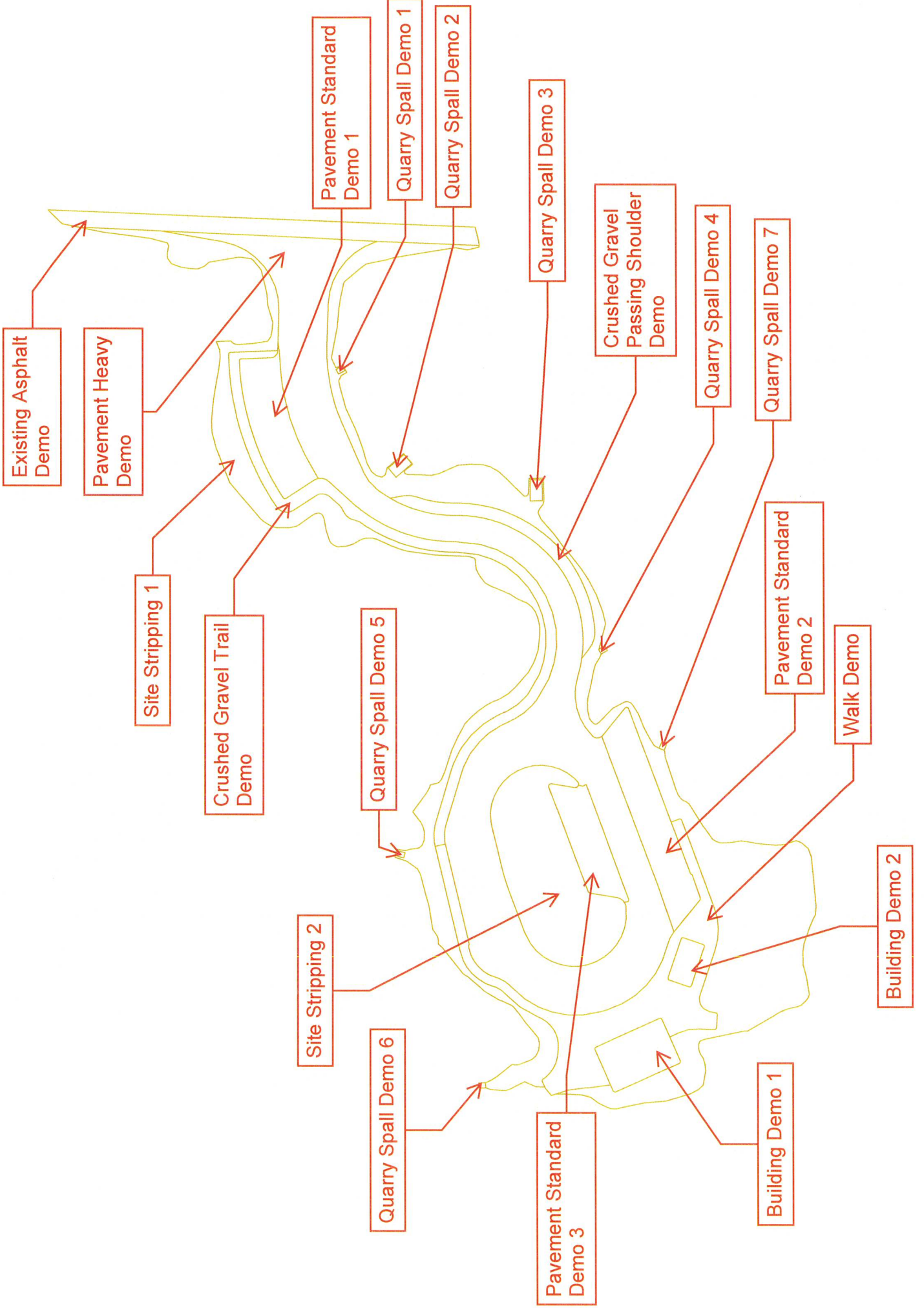
THURSTON COUNTY
RECEIVED

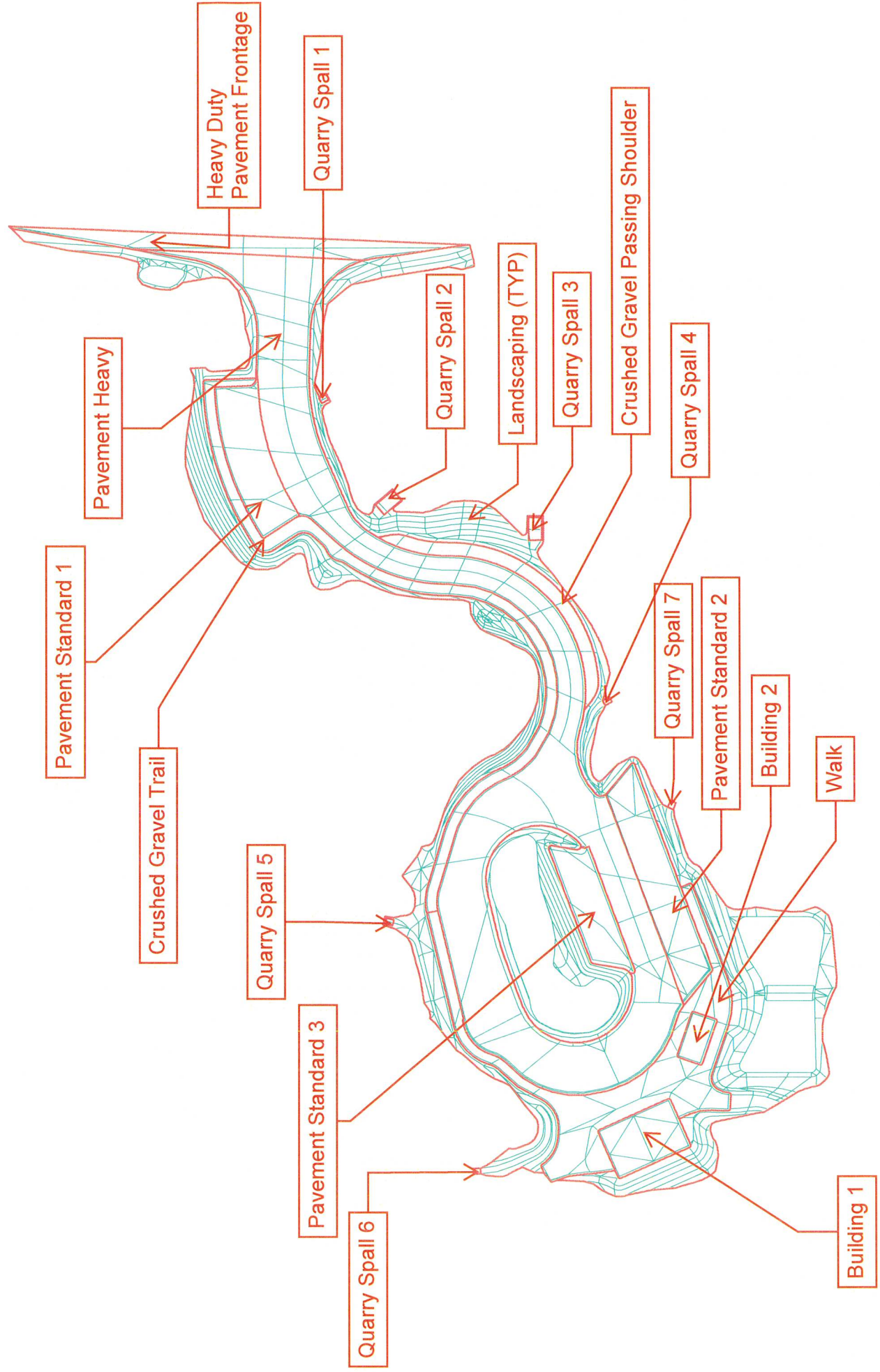
SEP 18 2020

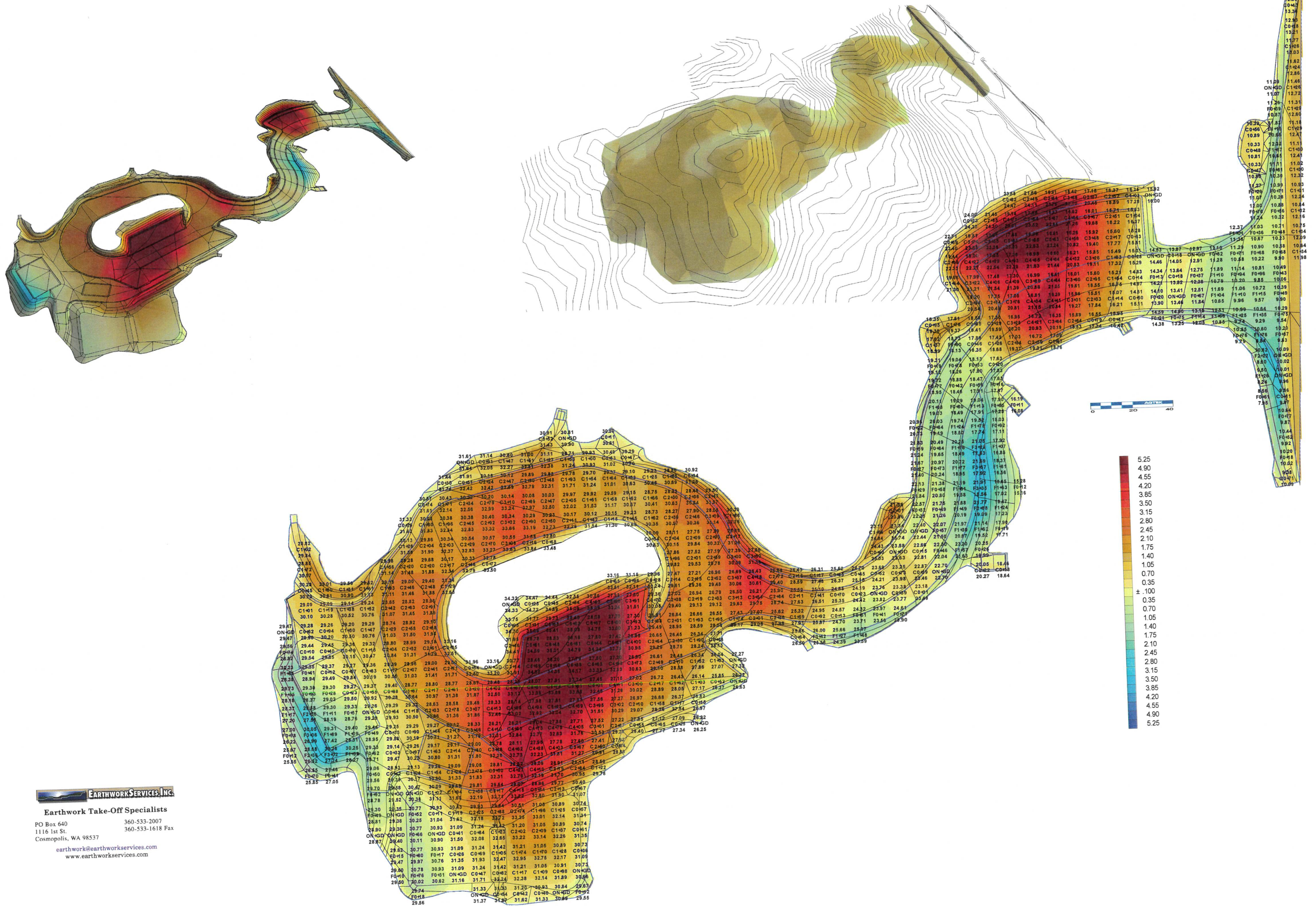
BUILDING DEVELOPMENT CENTER

Stripping Qtys	Plane Area	Slope Area	Depth	Volume
Site Stripping 1	18,170	18,271	0.667	451
Site Stripping 2	2,082	2,091	0.667	52
Site Sub:	20,252	20,362		503
Walk Demo	4,386	4,416	1.000	164
Stripping Total	56,118	56,498		1,795

Sectional Qtys	Plane Area	Slope Area	Depth	Volume
Building 1	1,173	1,174	1.833	80
Building 2	359	359	1.833	24
Building Sub:	1,532	1,533		104
Crushed Gravel Passing Shoulder	1,094	1,133	1.667	70
Crushed Gravel Trail	2,739	2,793	1.333	138
Crushed Sub:	3,833	3,926		208
Heavy Duty Pavement Frontage	1,841	1,842	1.833	125
Landscaping 1	18,691	19,383	0.667	479
Landscaping 2	2,082	2,257	0.667	56
Landscaping Sub:	20,773	21,640		535
Pavement Heavy	17,936	17,881	1.833	1,214
Pavement Standard 1	1,829	1,829	1.667	113
Pavement Standard 2	2,380	2,384	1.667	147
Pavement Standard 3	1,380	1,383	1.667	85
Pavement Sub:	23,525	23,477		1,559
Quarry Spall 1	12	12	1.000	0
Quarry Spall 2	84	84	1.000	3
Quarry Spall 3	84	85	1.000	3
Quarry Spall 4	12	12	1.000	0
Quarry Spall 5	12	12	1.000	0
Quarry Spall 6	12	12	1.000	0
Quarry Spall 7	12	12	1.000	0
Quarry Sub:	228	229		6
Walk	4,386	4,413	1.667	272
Sectional Total	56,118	57,060		2,809







EARTHWORKSERVICES, INC.

Earthwork Take-Off Specialists
PO Box 640 360-533-2007
1116 1st St. 360-533-1618 Fax
Cosmopolis, WA 98537

earthwork@earthworkservices.com
www.earthworkservices.com