

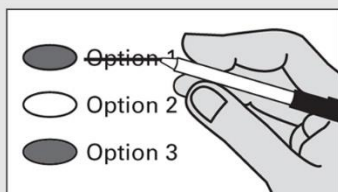
## Sample Ballot Instructions

### **i** Instructions



#### **Marking Your Ballot**

Use a dark pen. Vote for one. If you vote for more than one, that race or measure will not count. To vote for a candidate not on the ballot, print the name on the blank line and fill in the oval to the left.



#### **Making A Correction**

Draw a line through the entire candidate's name or response. To vote for another candidate or response, fill in the oval to the left of your new selection.

### **Additional Information**

Sign and date the voter's declaration on the return envelope.

For a replacement ballot, or to update your address, contact the Thurston County Auditor's Office at 360.786.5408 or [elections@co.thurston.wa.us](mailto:elections@co.thurston.wa.us).

Return your ballot in a ballot drop box no later than 8:00 p.m. Election Day, or by mail (postmarked on or before Election Day).

For a list of the people and organizations that donated to state and local candidates and ballot measure campaigns, visit [www.pdc.wa.gov](http://www.pdc.wa.gov).

For information about the location, hours, and services of the voting center; ballot drop boxes; and availability of accessible voting equipment and locations, call the Thurston County Auditor's Office at 360.786.5408 (or 711 Washington Relay) or visit [ThurstonWAVotes.gov](http://ThurstonWAVotes.gov).

**Yelm Community Schools**  
**Proposition No. 1**  
**Replacement Educational Programs and Operations Levy**

The Board of Directors of Yelm Community Schools adopted Resolution No. 06-23-24, authorizing a replacement levy to continue support for educational programs. This proposition would authorize the District to levy the following excess taxes, replacing an expiring levy, on taxable property within the District, for educational programs and operation expenses not funded by the State (including special education, nurses, counselors, safety staff, graduation readiness, technology, athletics, and extracurricular activities):

Collection Year	Estimated Levy Rate/\$1,000 Assessed Value	Maximum Levy Amount
2025	\$2.25	\$13,950,000
2026	\$2.25	\$14,525,000
2027	\$2.25	\$15,100,000
2028	\$2.25	\$15,700,000

all as provided in Resolution No. 06-23-24.

Should this proposition be approved?

- ☐ Yes
- ☐ No