

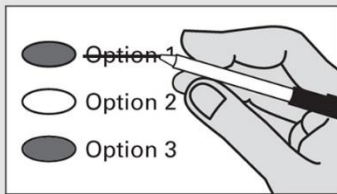
Sample Ballot Instructions

i Instructions



Marking Your Ballot

Use a dark pen. Vote for one. If you vote for more than one, that race or measure will not count. To vote for a candidate not on the ballot, print the name on the blank line and fill in the oval to the left.



Making A Correction

Draw a line through the entire candidate's name or response. To vote for another candidate or response, fill in the oval to the left of your new selection.

Additional Information

Sign and date the voter's declaration on the return envelope.

For a replacement ballot, or to update your address, contact the Thurston County Auditor's Office at 360.786.5408 or elections@co.thurston.wa.us.

Return your ballot in a ballot drop box no later than 8:00 p.m. Election Day, or by mail (postmarked on or before Election Day).

For a list of the people and organizations that donated to state and local candidates and ballot measure campaigns, visit www.pdc.wa.gov.

For information about the location, hours, and services of the voting center; ballot drop boxes; and availability of accessible voting equipment and locations, call the Thurston County Auditor's Office at 360.786.5408 (or 711 Washington Relay) or visit ThurstonVotes.org.

Precinct Committee Officers (PCO): This office appears only on the Primary ballot if two candidates from the same party file for the same precinct. The names will appear in lot draw order. If only one person from a party files for a precinct they will be deemed elected at the close of filing and the office will not appear on the ballot. Write-ins are not permitted.

Voters may vote for only one candidate for PCO. If a voter votes for more than one candidate, the votes must be treated as overvotes. For the limited purpose of voting in a precinct committee officer election, a voter affiliates with a major political party when he or she votes for a candidate of that party.

Washington's Top Two Primary Election:

In each race, you may vote for any candidate listed. The two candidates who receive the most votes in the August Primary will advance to the November General Election.

Note: Not all of these candidates and measures will appear on your regular ballot. Your ballot will only contain the races and measures for which you are eligible to vote. Be sure to follow all instructions on your ballot.

READ: Each candidate for partisan office may state a political party that he or she prefers. A candidate’s preference does not imply that the candidate is nominated or endorsed by the party, or that the party approves of or associates with that candidate.

Federal Partisan Office

U.S. Representative, District No. 3
Two Year Term **Vote for One**

- Martin D. Hash
(States No Party Preference)
- Davy Ray
(Prefers Democratic Party)
- Carolyn Long
(Prefers Democratic Party)
- Devin C. Gray
(Prefers Democrat Party)
- Jaime Herrera Beutler
(Prefers Republican Party)
-

Federal Partisan Office

U.S. Representative, District No. 10
Two Year Term **Vote for One**

- Jackson Maynard
(Prefers Republican Party)
- Todd Buckley
(Prefers Independent Party)
- Nancy Dailey Slotnick
(Prefers Republican Party)
- Kristine M. Reeves
(Prefers Democratic Party)
- Joshua Collins
(Prefers Essential Workers Party)
- Rian Ingram
(Prefers Republican Party)
- Gordon Allen Pross
(Prefers Republican Party)
- Richard Boyce
(Prefers Congress Sucks Party)
- Mary Bacon
(Prefers Democratic Party)
- Beth Doglio
(Prefers Democratic Party)
- Don Hewett
(Prefers Republican Party)
- Phil Gardner
(Prefers Democratic Party)
- Eric LeMay
(Prefers Democratic Party)
- Marilyn Strickland
(Prefers Democratic Party)
- Dean Johnson
(Prefers Republican Party)
- Ryan Tate
(Prefers Republican Party)
- Ralph Johnson
(Prefers Republican Party)
- Sam Wright
(Prefers Democratic Party)
- Randolph (Randy) Bell
(Prefers Democratic Party)
-

State Partisan Office

Governor

Four Year Term

Vote for One

- Alex Tsimerman
(Prefers StandupAmerica Party)
- Phil Fortunato
(Prefers Republican Party)
- Ryan Ryals
(Prefers Unaffiliated Party)
- Leon Aaron Lawson
(Prefers Trump Republican Party)
- Henry Clay Dennison
(Prefers Socialist Workers Party)
- Tim Eyman
(Prefers Republican Party)
- Liz Hallock
(Prefers Green Party)
- Goodspaceguy
(Prefers Trump Republican Party)
- Omari Tahir Garrett
(Prefers Democrat Party)
- Don L. Rivers
(Prefers Democratic Party)
- Martin L. `Iceman` Wheeler
(Prefers Republican Party)
- Raul Garcia
(Prefers Republican Party)
- Tylor Grow
(Prefers Republican Party)
- Winston Wilkes
(Prefers Propertarianist Party)
- Brian R. Weed
(States No Party Preference)
- Thor Amundson
(Prefers Independent Party)
- Gene Hart
(Prefers Democratic Party)
- William (Bill) Miller
(Prefers American Patriot Party)

Office continued next column 

State Partisan Office (Continued)

Governor (Continued)

- Matthew Murray
(Prefers Republican Party)
- Dylan B. Nails
(Prefers Independent Party)
- Cameron M. Vessey
(States No Party Preference)
- David W. Blomstrom
(Prefers Fifth Republic Party)
- Anton Sakharov
(Prefers Trump Republican Party)
- Craig Campbell
(States No Party Preference)
- Nate Herzog
(Prefers Pre2016 Republican Party)
- Cregan M. Newhouse
(States No Party Preference)
- Ian Gonzales
(Prefers Republican Party)
- Cairo D'Almeida
(Prefers Democratic Party)
- Elaina J. Gonzalez
(Prefers Independent Party)
- Jay Inslee
(Prefers Democratic Party)
- Joshua Freed
(Prefers Republican Party)
- David Voltz
(Prefers Cascadia Labour Party)
- Joshua Wolf
(Prefers New-Liberty Party)
- Loren Culp
(Prefers Republican Party)
- Richard L. Carpenter
(Prefers Republican Party)
- Bill Hirt
(Prefers Republican Party)
-

State Partisan Offices

Lieutenant Governor
Four Year Term **Vote for One**

- Joseph Brumbles
(Prefers Republican Party)
- Jared Frerichs
(Prefers Libertarian Party)
- Ann Davison Sattler
(Prefers Republican Party)
- James R. Rafferty
(Prefers Democratic Party)
- Marko Liias
(Prefers Democratic Party)
- Matt Seymour
(Prefers Libertarian Party)
- Michelle Jasmer
(Prefers Democratic Party)
- Bill Penor
(Prefers Republican Party)
- Richard (Dick) Muri
(Prefers Republican Party)
- Denny Heck
(Prefers Democratic Party)
- Marty McClendon
(Prefers Republican Party)
-

Secretary of State
Four Year Term **Vote for One**

- Ed Minger
(Prefers Independent Party)
- Gentry Lange
(Prefers Progressive Party)
- Kim Wyman
(Prefers Republican Party)
- Gael Tarleton
(Prefers Democratic Party)
-

State Treasurer
Four Year Term **Vote for One**

- Duane A. Davidson
(Prefers Republican Party)
- Mike Pellicciotti
(Prefers Democratic Party)
-

State Auditor
Four Year Term **Vote for One**

- Joshua Casey
(Prefers Democratic Party)
- Chris Leyba
(Prefers Republican Party)
- Pat (Patrice) McCarthy
(Prefers Democratic Party)
-

State Partisan Offices

Attorney General
Four Year Term **Vote for One**

- Matt Larkin
(Prefers Republican Party)
- Mike Vaska
(Prefers GOP Party)
- Brett Rogers
(Prefers Republican Party)
- Bob Ferguson
(Prefers Democratic Party)
-

Commissioner of Public Lands
Four Year Term **Vote for One**

- Cameron Whitney
(Prefers Republican Party)
- Steve Sharon
(Prefers Republican Party)
- Hilary Franz
(Prefers Democratic Party)
- Kelsey Reyes
(Prefers Libertarian Party)
- Maryam Abasbarzy
(Prefers Republican Party)
- Sue Kuehl Pederson
(Prefers Republican Party)
- Frank Wallbrown
(Prefers Democratic Party)
-

State Nonpartisan Office

Superintendent of Public Instruction
Four Year Term **Vote for One**

- Ron Higgins
- Maia Espinoza
- Stan Lippmann
- David Spring
- Dennis Wick
- Chris Reykdal
-

State Partisan Office

Insurance Commissioner
Four Year Term **Vote for One**

- Anthony Welti
(Prefers Libertarian Party)
- Chirayu Avinash Patel
(Prefers Republican Party)
- Mike Kreidler
(Prefers Democratic Party)
-

State Legislative Partisan Offices

Senator, District No. 2
Four Year Term **Vote for One**

- Matthew Smith
(Prefers Republican Party)
- Josh Penner
(Prefers Republican Party)
- Ronda Litzenberger
(Prefers Republican Party)
- Rick Payne
(Prefers Democrat Party)
- Jim McCune
(Prefers Republican Party)
- Gina Blanchard-Reed
(Prefers Republican Party)
-

Representative, District No. 2, Pos. No. 1
Two Year Term **Vote for One**

- Andrew Barkis
(Prefers Republican Party)
-

Representative, District No. 2, Pos. No. 2
Two Year Term **Vote for One**

- Veronica Whitcher Rockett
(Prefers Democratic Party)
- JT Wilcox
(Prefers Republican Party)
- Matt Marshall
(Prefers Republican Party)
-

Senator, District No. 20
Four Year Term **Vote for One**

- John Braun
(Prefers Republican Party)
-

Representative, District No. 20, Pos. No. 1
Two Year Term **Vote for One**

- Timothy Zahn
(Prefers Democratic Party)
- Kurtis Engle
(States No Party Preference)
- Peter Abbarno
(Prefers Republican Party)
- Brian Lange
(Prefers Republican Party)
-

State Legislative Partisan Offices

Representative, District No. 20, Pos. No. 2
Two Year Term **Vote for One**

- Will Rollet
(Prefers Democratic Party)
- Ed Orcutt
(Prefers Republican Party)
-

Senator, District No. 22
Four Year Term **Vote for One**

- Kevin Young
(Prefers Democratic Party)
- Sam Hunt
(Prefers Democratic Party)
- Garry Holland
(Prefers Republican Party)
-

Representative, District No. 22, Pos. No. 1
Two Year Term **Vote for One**

- J. D. Ingram
(Prefers Republican Party)
- Allen Acosta
(Prefers Libertarian Party)
- Laurie Dolan
(Prefers Democratic Party)
- Jonny Meade
(Prefers Socialist Party)
-

Representative, District No. 22, Pos. No. 2
Two Year Term **Vote for One**

- Anthony Novack
(Prefers Democratic Party)
- Mary Ellen Biggerstaff
(Prefers Democratic Party)
- Jessica Bateman
(Prefers Democratic Party)
- Dusty Pierpoint
(Prefers Republican Party)
- Glenda Breiler
(Prefers Democratic Party)
-

State Legislative Partisan Offices

Representative, District No. 35, Pos. No. 1
Two Year Term **Vote for One**

- Colton Myers
(Prefers Democratic Party)
- Dan Griffey
(Prefers Republican Party)
-

Representative, District No. 35, Pos. No. 2
Two Year Term **Vote for One**

- Earl W. Burt
(Prefers Shortstop Party)
- Drew C. MacEwen
(Prefers Republican Party)
- Darcy Huffman
(Prefers Democratic Party)
-

Thurston County Partisan Offices

Commissioner, District No. 1
Four Year Term **Vote for One**

- Thomas (Tom) Bolender
(States No Party Preference)
- David Gaw
(Prefers Democratic Party)
- Carolina Mejia
(Prefers Democratic Party)
- Rory Summerson
(Prefers Democratic Party)
- C Davis
(Prefers Republican Party)
- Bud Blake
(Prefers Independent Party)
- John (Hutch) Hutchings
(Prefers Independent Party)
-

Commissioner, District No. 2
Four Year Term **Vote for One**

- Gary Edwards
(States No Party Preference)
- Michael R. Steadman
(Prefers Democratic Party)
-

Thurston County Judicial Nonpartisan Office

Superior Court, Pos. No. 8
Four Year Term **Vote for One**

- David M. Hankins
- Scott Ahlf
- Jonathan A. Sprouffske
- Sharonda D. Amamilo
-

Local Measures

Centralia School District No. 401-L
Proposition No. 1
Replacement Educational Programs and Operations Levy

The Board of Directors adopted Resolution No. 2020-09 concerning educational funding. This proposition authorizes the District to levy the following excess taxes, to replace an expiring levy, on all taxable property within the District, to support the District’s educational programs and operations not funded by the state:

Collection Years	Approximate Levy Rate/\$1,000 Assessed Value	Levy Amount
2021	\$2.00	\$5,300,000
2022	\$2.00	\$5,400,000

all as provided in the Resolution. Should this proposition be approved?

- Yes
- No

Thurston County Fire Protection District No. 6 (East Olympia)
Proposition No. 1
Levy Lid Lift

The Board of Fire Commissioners of Thurston County Fire Protection District No. 6 adopted Resolution No. 2020-02 concerning a proposition to restore the regular property tax levy. This proposition, if approved, would maintain district operations, in an amount not to exceed \$1.50 per \$1,000 of assessed valuation for collection in 2021, and authorize setting the levy limit factor at 106% (not to exceed \$1.50 rate) for each of the following five years. The 2026 levy amount shall be used to calculate subsequent levy limits. Should this proposition be:

- Approved
- Rejected

Political Party Precinct Committee Officer

For this office only: In order to vote for precinct committee officer, a partisan office, you must affirm that you are a Democrat or a Republican and may vote only for one candidate from the party you select. Your vote for a candidate affirms your affiliation with the same party as the candidate. This preference is private and will not be matched to your name or shared.

Precinct Committee Officer
Two Year Term

Vote for One

- PCO Candidate – Dem
I affirm I am a Democrat
 - PCO Candidate – Dem
I affirm I am a Democrat
 - PCO Candidate – Rep
I affirm I am a Republican
 - PCO Candidate – Rep
I affirm I am a Republican
-