

Sample Ballot Instructions

Revised: December 2014

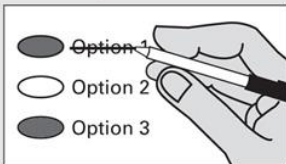
i Instructions

Marking Your Ballot



Fill in the oval to the left of your choice with a dark pen. Vote for one. If you vote for more than one, that race or measure will not be counted. To vote for a candidate not on the ballot, print the name on the dashed line and fill in the oval to the left.

Making A Correction



If you make a mistake, draw a line through the entire candidate's name or response.

To vote for another candidate or response, fill in the oval to the left of your new selection.

Additional Information

Sign and date the voter's declaration on the return envelope.

For a replacement ballot, contact the Thurston County Auditor's Office at (360) 786-5408.

Deposit your ballot in a ballot drop box no later than 8:00 p.m. Election Day or mail using first class postage. It must be postmarked on or before Election Day.

For a list of the people and organizations that donated to state and local candidates and ballot measure campaigns, visit www.pdc.wa.gov.

For information about the location, hours, and services of the voting center, ballot drop boxes, and the availability of accessible voting equipment and locations call the Thurston County Auditor's Office at (360) 786-5408 or visit ThurstonVotes.org.

If returning your ballot by mail, first class postage (\$0.49) is required.

Tenino School District No. 402

Proposition No. 1

Capital Levy for

Safety, Technology and School Improvements

The Board of Directors of Tenino School District No. 402 adopted Resolution No. 3:2014-2015, concerning a proposition to finance safety, technology and school improvements. This proposition would authorize the District to upgrade the elementary schools, middle school and high school (including making safety improvements, expanding student access to classroom technology and improving learning environments), and levy the following excess taxes, on all taxable property within the District:

<u>Collection Year</u>	<u>Approximate Levy Rate/\$1,000 Assessed Value</u>	<u>Levy Amount</u>
2016	\$1.46	\$1,260,756
2017	\$1.46	\$1,285,971
2018	\$1.46	\$1,311,691
2019	\$1.46	\$1,337,924
2020	\$1.46	\$1,364,683
2021	\$1.46	\$1,391,975

all as provided in Resolution No. 3:2014-2015.

Should this proposition be:

Approved

Rejected

Yelm Community Schools

Proposition No. 1

General Obligation Bonds to

Make Safety Improvements, and Construct and Renovate Schools

The Board of Directors of Yelm Community Schools adopted Resolution No. 01-14-15, concerning a proposition to finance safety, construction and renovation of schools. This proposition would authorize the District to: make safety improvements at all school facilities, construct a new Southworth Elementary School, construct a new Yelm Middle School, renovate Prairie Elementary School, construct a new 9th Grade Campus at Yelm High School, relocate Technology Center, and complete operations support facility; issue no more than \$53,900,000 of general obligation bonds maturing within 21 years; and levy annual excess property taxes to repay the bonds, all as provided in Resolution No. 01-14-15.

Should this proposition be:

Approved

Rejected