

Sample Ballot Instructions
February 13, 2018 Special Election
Thurston County, WA

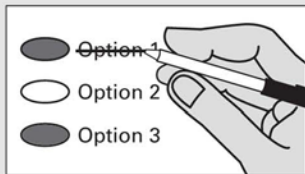
Revised: January 9, 2018

i Instructions



Marking Your Ballot

Use a dark pen. Fill in the oval to the left of your choice. Vote for one. If you vote for more than one, that race or measure will not count. To vote for a candidate not on the ballot, print the name on the dashed line and fill in the oval to the left.



Making A Correction

Draw a line through the entire candidate's name or response. To vote for another candidate or response, fill in the oval to the left of your new selection.

Additional Information

Sign and date the voter's declaration on the return envelope.

For a replacement ballot, call the Thurston County Auditor's Office at (360) 786-5408.

Deposit your ballot in a ballot drop box no later than 8:00 p.m. Election Day, or mail using a first class stamp. It must be postmarked on or before Election Day.

For a list of the people and organizations that donated to state and local candidates and ballot measure campaigns, visit www.pdc.wa.gov.

For information about the location, hours, and services of the voting center; ballot drop boxes; and availability of accessible voting equipment and locations, call the Thurston County Auditor's Office at (360) 786-5408 (or 711 Washington Relay) or visit ThurstonVotes.org.

Return your ballot:

- by mail using first-class postage (\$0.50), or
- using a ballot drop box beginning January 24, 2018.

Note: Your regular ballot may not contain all measures (appearance is based on your residential address).

Note: Not all of these measures will appear on your regular ballot. Your ballot will only contain the measures for which you are eligible to vote. Be sure to follow all instructions on your ballot.

**City of Olympia
Proposition No. 1
Sales and Use Tax Increase for the
Olympia Home Fund**

The City Council of the City of Olympia adopted Resolution No. M-1912 concerning a sales and use tax increase pursuant to RCW 82.14.530. If approved, this proposition would authorize the City to impose an additional sales and use tax of 0.1%, as permitted by state law. The City's proceeds shall be used for the Olympia Home Fund to construct affordable and supportive housing and housing-related purposes, including mental and behavioral health-related facilities, and for costs for operations, maintenance, delivery, and evaluation of mental health programs and services, or housing-related services, as allowed by RCW 82.14.530.

Should the proposition be:

- Approved
- Rejected

**Centralia School District No. 401-L
Proposition No. 1
Replacement Educational Programs and
Operations Levy**

The Board of Directors adopted Resolution No. 2017-26 concerning educational funding. This proposition authorizes the District to levy the following excess taxes, to replace an expiring levy, on all taxable property within the District, to support the District's educational programs and operations not funded by the state:

Collection Years	Approximate Levy Rate/\$1,000 Assessed Value	Levy Amount
2019	\$1.50	\$3,300,000
2020	\$1.50	\$3,500,000

all as provided in the Resolution.

Should this proposition be approved?

- Yes
- No

**Olympia School District No. 111
 Proposition No. 1
 Technology and Capital Projects
 Replacement Levy**

The Board of Directors of Olympia School District passed Resolution No. 564 concerning a proposition to finance technology and capital projects. This proposition would authorize the District to modernize District facilities by acquiring, developing and implementing computer technology systems, and facilities for operations and instruction and capital administrative expenses, and other capital project expenditures to improve safety, by levying the following excess taxes, in place of an expiring levy, all as provided in Resolution No. 564 on all taxable property within the District:

Collection Years	Approximate Levy Rate/\$1,000 Assessed Value	Levy Amount
2019	\$0.87	\$8,178,296
2020	\$0.87	\$8,575,771
2021	\$0.85	\$8,895,271
2022	\$0.89	\$9,776,618

Should this proposition be approved?

- Yes
- No

**Yelm Community Schools
 Proposition No. 1
 Bonds to Rebuild and Renovate Schools and
 Improve Safety**

The Board of Directors of Yelm Community Schools adopted Resolution No. 03-17-18, concerning financing to relieve overcrowding and improve infrastructure and safety. This proposition would authorize the District to: rebuild Yelm Middle School and Southworth Elementary School on existing property; renovate and expand Prairie Elementary School; remove 34 portable classrooms from these schools; make District-wide safety and security improvements, which may include control entry/access, security cameras, lighting and fencing; issue no more than \$76,000,000 of general obligation bonds maturing within 21 years; and levy annual excess property taxes to repay the bonds, all as provided in Resolution No. 03-17-18.

Should this proposition be:

- Approved
- Rejected