

Presidential Primary Sample Ballot Instructions
March 10, 2020 Presidential Primary Election
Thurston County

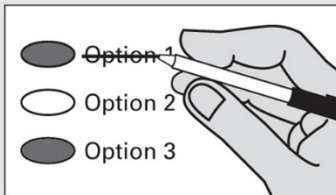
Revised: January 2020

i Instructions



Marking Your Ballot

Use a dark pen. Vote for one. If you vote for more than one, that race or measure will not count. To vote for a candidate not on the ballot, print the name on the blank line and fill in the oval to the left.



Making A Correction

Draw a line through the entire candidate's name or response. To vote for another candidate or response, fill in the oval to the left of your new selection.

Additional Information

Sign and date the voter's declaration on the return envelope.

For a replacement ballot, or to update your address, contact the Thurston County Auditor's Office at 360.786.5408 or elections@co.thurston.wa.us.

Return your ballot in a ballot drop box no later than 8:00 p.m. Election Day, or by mail (postmarked on or before Election Day).

For a list of the people and organizations that donated to Presidential candidates' campaigns, visit www.fec.gov.

For information about the location, hours, and services of the voting center; ballot drop boxes; and availability of accessible voting equipment and locations, call the Thurston County Auditor's Office at 360.786.5408 (or 711 Washington Relay) or visit ThurstonVotes.org.

Democratic Party

Republican Party

← **OR** →
Vote Only ONE Party

President of the United States
Vote for One

President of the United States
Vote for One

- Michael Bennet
- Joseph R. Biden
- Michael Bloomberg
- Cory Booker
- Pete Buttigieg
- John Delaney
- Tulsi Gabbard
- Amy Klobuchar
- Deval Patrick
- Bernie Sanders
- Tom Steyer
- Elizabeth Warren
- Andrew Yang
- Uncommitted Delegates
-

Vote your party selection:
Must match your party choice
on return envelope.

Please refer to the 7 steps on
the “**Voting in the
Presidential Primary**” insert
provided with your ballot
material.

- Donald J. Trump
-

End of Republican Party ballot
If you marked the Republican
Party box, you must vote for a
Republican

End of Democratic Party ballot
If you marked the Democratic
Party box, you must vote for a
Democrat.