

Presidential Primary Sample Ballot Instructions
May 24, 2016 Presidential Primary Election
Thurston County

Revised: March 2016

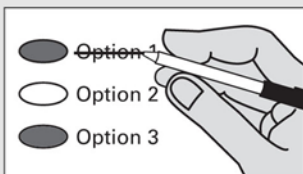
i Instructions

Marking Your Ballot



Use a dark pen to fill in the oval to the left of your choice. Vote for one. If you vote for more than one, that race will not be counted. To vote for a candidate not on the ballot, print the name on the dashed line and fill in the oval to the left.

Making A Correction



If you make a mistake, draw a line through the entire candidate's name. To vote for another candidate, fill in the oval to the left of your new selection.

Important Presidential Primary Voting Instructions

Sign and date the declarations on the return envelope.

For a replacement ballot, contact the Thurston County Auditor's Office at (360) 786-5408.

Deposit your ballot in a ballot drop box no later than 8:00 p.m. Election Day or mail using first class postage. It must be postmarked on or before Election Day.

For a list of the people and organizations that donated to Presidential candidates' campaigns, visit www.fec.gov.

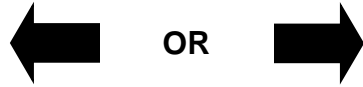
For information about the location, hours, and services of the voting center and ballot drop boxes, including the availability of accessible voting equipment, call the Thurston County Auditor's Office at (360) 786-5408 or visit ThurstonVotes.org.

If returning your ballot by mail, first-class postage (\$0.49 until April 10, 2016 when first-class postage will be \$0.47) is required.

Democratic Party

President of the United States
Vote for One

- Hillary Clinton
- Bernie Sanders
-



Vote Only ONE Party

Vote your party selection:
Must match your party choice
on return envelope.

Please refer to the **“7 easy
steps for voting in the
Presidential Primary”** insert
provided with your ballot
material.

Republican Party

President of the United States
Vote for One

- Ben Carson
- Ted Cruz
- John R. Kasich
- Donald J. Trump
-