

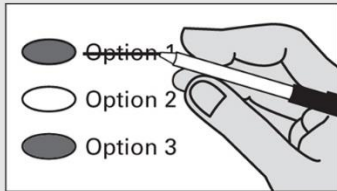
## Sample Ballot Instructions

### **i** Instructions



#### **Marking Your Ballot**

Use a dark pen. Vote for one. If you vote for more than one, that race or measure will not count. To vote for a candidate not on the ballot, print the name on the blank line and fill in the oval to the left.



#### **Making A Correction**

Draw a line through the entire candidate's name or response. To vote for another candidate or response, fill in the oval to the left of your new selection.

### **Additional Information**

Sign and date the voter's declaration on the return envelope.

For a replacement ballot, or to update your address, contact the Thurston County Auditor's Office at 360.786.5408 or [elections@co.thurston.wa.us](mailto:elections@co.thurston.wa.us).

Return your ballot in a ballot drop box no later than 8:00 p.m. Election Day, or by mail (postmarked on or before Election Day).

For a list of the people and organizations that donated to state and local candidates and ballot measure campaigns, visit [www.pdc.wa.gov](http://www.pdc.wa.gov).

For information about the location, hours, and services of the voting center; ballot drop boxes; and availability of accessible voting equipment and locations, call the Thurston County Auditor's Office at 360.786.5408 (or 711 Washington Relay) or visit [ThurstonVotes.org](http://ThurstonVotes.org).

For your ballot to be counted, the ballot must be postmarked no later than Election Day or deposited in a ballot drop box no later than 8:00 p.m. Election Day.

If a primary election was held for an office, the two candidates who received the most votes in the Primary advanced to the General Election.

Each candidate for partisan office may state a political party that he or she prefers. A candidate's preference does not imply that the candidate is nominated or endorsed by the party, or that the party approves of or associates with that candidate.

The election for President and Vice-President is different. Candidates for President and Vice-President are the official nominees of their political party.

**Note:** Not all of these candidates and measures will appear on your regular ballot. Your ballot will only contain the races and measures for which you are eligible to vote. Be sure to follow all instructions on your ballot.

**Referendum Measure**

**Referendum Measure No. 90**

The legislature passed Engrossed Substitute Senate Bill 5395 concerning comprehensive sexual health education. This bill would require school districts to adopt or develop, consistent with state standards, comprehensive age-appropriate sexual health education, as defined, for all students, and excuse students if their parents request.

Should this bill be:

- Approved
- Rejected

**Advisory Votes**

**Advisory Vote No. 32  
Engrossed Substitute Senate Bill 5323**

The legislature imposed, without a vote of the people, a retail sales tax on pass-through charges retail establishments collect for specified carryout bags, costing \$32,000,000 in its first ten years, for government spending.

This tax increase should be:

- Repealed
- Maintained

**Advisory Vote No. 33  
Substitute Senate Bill 5628**

The legislature imposed, without a vote of the people, a tax on heavy equipment rentals to consumers by heavy equipment rental property dealers, costing \$103,000,000 in its first ten years, for government spending.

This tax increase should be:

- Repealed
- Maintained

**Advisory Vote No. 34  
Engrossed Substitute Senate Bill 6492**

The legislature increased, without a vote of the people, the business and occupation tax rate for certain businesses, while reducing certain surcharges, costing \$843,000,000 in its first ten years, for government spending.

This tax increase should be:

- Repealed
- Maintained

**Advisory Vote**

**Advisory Vote No. 35  
Engrossed Senate Bill 6690**

The legislature increased, without a vote of the people, the business and occupation tax on manufacturers of commercial airplanes, including components or tooling, costing \$1,024,000,000 in its first ten years, for government spending.

This tax increase should be:

- Repealed
- Maintained

**Proposed Constitutional Amendment**

**Engrossed Senate Joint Resolution No. 8212**

The legislature has proposed a constitutional amendment on investment of public funds. This amendment would allow public money held in a fund for long-term care services and supports to be invested by governments as authorized by state law, including investments in private stocks.

Should this constitutional amendment be:

- Approved
- Rejected

**If a primary election was held for an office, the two candidates who received the most votes in the Primary advanced to the General Election. Each candidate for partisan office may state a political party that he or she prefers. A candidate's preference does not imply that the candidate is nominated or endorsed by the party, or that the party approves of or associates with that candidate. The election for President and Vice-President is different. Candidates for President and Vice-President are the official nominees of their political party.**

**Federal Partisan Office**

<b>President / Vice President</b>	<b>Vote for One</b>
<b>Four Year Term</b>	

- Joseph R. Biden / Kamala D. Harris  
Democratic Party Nominees
- Donald J. Trump / Michael R. Pence  
Republican Party Nominees
- Jo Jorgensen / Jeremy "Spike" Cohen  
Libertarian Party Nominees
- Howie Hawkins / Angela Walker  
Green Party Nominees
- Gloria La Riva / Sunil Freeman  
Socialism and Liberation Party Nominees
- Alyson Kennedy / Malcolm M. Jarrett  
Socialist Workers Party Nominees
-

**READ: Each candidate for President and Vice-President is the official nominee of a political party. For other partisan offices, each candidate may state a political party that he or she prefers. A candidate's preference does not imply that the candidate is nominated or endorsed by the party, or that the party approves of or associates with that candidate.**

**Federal Partisan Offices**

**U.S. Representative, District No. 3  
Two Year Term Vote for One**

- Jaime Herrera Beutler  
(Prefers Republican Party)
- Carolyn Long  
(Prefers Democratic Party)
- 

**U.S. Representative, District No. 10  
Two Year Term Vote for One**

- Marilyn Strickland  
(Prefers Democratic Party)
- Beth Doglio  
(Prefers Democratic Party)
- 

**State Partisan Offices**

**Governor  
Four Year Term Vote for One**

- Jay Inslee  
(Prefers Democratic Party)
- Loren Culp  
(Prefers Republican Party)
- 

**Lieutenant Governor  
Four Year Term Vote for One**

- Denny Heck  
(Prefers Democratic Party)
- Marko Liias  
(Prefers Democratic Party)
- 

**Secretary of State  
Four Year Term Vote for One**

- Kim Wyman  
(Prefers Republican Party)
- Gael Tarleton  
(Prefers Democratic Party)
- 

**State Partisan Offices**

**State Treasurer  
Four Year Term Vote for One**

- Mike Pellicciotti  
(Prefers Democratic Party)
- Duane A. Davidson  
(Prefers Republican Party)
- 

**State Auditor  
Four Year Term Vote for One**

- Pat (Patrice) McCarthy  
(Prefers Democratic Party)
- Chris Leyba  
(Prefers Republican Party)
- 

**Attorney General  
Four Year Term Vote for One**

- Bob Ferguson  
(Prefers Democratic Party)
- Matt Larkin  
(Prefers Republican Party)
- 

**Commissioner of Public Lands  
Four Year Term Vote for One**

- Hilary Franz  
(Prefers Democratic Party)
- Sue Kuehl Pederson  
(Prefers Republican Party)
- 

**State Nonpartisan Office**

**Superintendent of Public Instruction  
Four Year Term Vote for One**

- Chris Reykdal
- Maia Espinoza
- 

**State Partisan Office**

**Insurance Commissioner  
Four Year Term Vote for One**

- Mike Kreidler  
(Prefers Democratic Party)
- Chirayu Avinash Patel  
(Prefers Republican Party)
-

**State Legislative Partisan Offices**

**Senator, District No. 2**  
**Four Year Term** **Vote for One**

- Rick Payne  
(Prefers Democrat Party)
- Jim McCune  
(Prefers Republican Party)
- 

**Representative, District No. 2, Pos. No. 1**  
**Two Year Term** **Vote for One**

- Andrew Barkis  
(Prefers Republican Party)
- 

**Representative, District No. 2, Pos. No. 2**  
**Two Year Term** **Vote for One**

- JT Wilcox  
(Prefers Republican Party)
- Veronica Whitcher Rockett  
(Prefers Democratic Party)
- 

**Senator, District No. 20**  
**Four Year Term** **Vote for One**

- John Braun  
(Prefers Republican Party)
- 

**Representative, District No. 20, Pos. No. 1**  
**Two Year Term** **Vote for One**

- Peter Abbarno  
(Prefers Republican Party)
- Timothy Zahn  
(Prefers Democratic Party)
- 

**Representative, District No. 20, Pos. No. 2**  
**Two Year Term** **Vote for One**

- Ed Orcutt  
(Prefers Republican Party)
- Will Rollet  
(Prefers Democratic Party)
- 

**Senator, District No. 22**  
**Four Year Term** **Vote for One**

- Sam Hunt  
(Prefers Democratic Party)
- Garry Holland  
(Prefers Republican Party)
- 

**State Legislative Partisan Offices**

**Representative, District No. 22, Pos. No. 1**  
**Two Year Term** **Vote for One**

- Laurie Dolan  
(Prefers Democratic Party)
- J. D. Ingram  
(Prefers Republican Party)
- 

**Representative, District No. 22, Pos. No. 2**  
**Two Year Term** **Vote for One**

- Dusty Pierpoint  
(Prefers Republican Party)
- Jessica Bateman  
(Prefers Democratic Party)
- 

**Representative, District No. 35, Pos. No. 1**  
**Two Year Term** **Vote for One**

- Dan Griffey  
(Prefers Republican Party)
- Colton Myers  
(Prefers Democratic Party)
- 

**Representative, District No. 35, Pos. No. 2**  
**Two Year Term** **Vote for One**

- Drew C. MacEwen  
(Prefers Republican Party)
- Darcy Huffman  
(Prefers Democratic Party)
- 

**Thurston County Partisan Offices**

**Commissioner, District No. 1**  
**Four Year Term** **Vote for One**

- Carolina Mejia  
(Prefers Democratic Party)
- C Davis  
(Prefers Republican Party)
- 

**Commissioner, District No. 2**  
**Four Year Term** **Vote for One**

- Gary Edwards  
(States No Party Preference)
- Michael R. Steadman  
(Prefers Democratic Party)
-

**State Judicial Nonpartisan Offices**

**Supreme Court Justice, Pos. No. 3**  
**Short + Six Year Term      Vote for One**

- Dave Larson
- Raquel Montoya-Lewis
- 

**Supreme Court Justice, Pos. No. 4**  
**Six Year Term      Vote for One**

- Charles W. Johnson
- 

**Supreme Court Justice, Pos. No. 6**  
**Two Year Unexpired Term      Vote for One**

- Richard S. Serns
- G. Helen Whitener
- 

**Supreme Court Justice, Pos. No. 7**  
**Six Year Term      Vote for One**

- Debra L. Stephens
- 

**Court of Appeals Judge, Division 2, District 2,**  
**Pos. No. 1**  
**Six Year Term      Vote for One**

- Lisa L. Sutton
- 

**Thurston County Judicial Nonpartisan Office**

**Superior Court Judge, Pos. No. 8**  
**Four Year Term      Vote for One**

- Sharonda D. Amamilo
- Scott Ahlf
- 

**Thurston County Nonpartisan Office**

**Public Utility District Commissioner, District**  
**No. 3**  
**Six Year Term      Vote for One**

- Chris Stearns
- 

**Lacey Fire Protection District No. 3**

**Proposition No. 1**  
**Levy Lid Lift**

The Board of Fire Commissioners of Lacey Fire Protection District No. 3 adopted Resolution No. 876-07-20 concerning a proposition to restore the District’s regular property tax levy. This proposition would, if approved, restore the 2021 regular property tax levy to \$1.50/\$1,000 assessed value and set the limit factor by which the levy may increase in 2022 through 2026 at 106%. New revenues would be used for limited fire protection, prevention and emergency medical services purposes, including maintenance, operation and replacement costs. The maximum permitted levy amount for 2026 would be used for the purpose of computing the limitations for subsequent levies under chapter 84.55 RCW.

Should this proposition be:

- Approved
- Rejected