



2008 Preliminary Budget



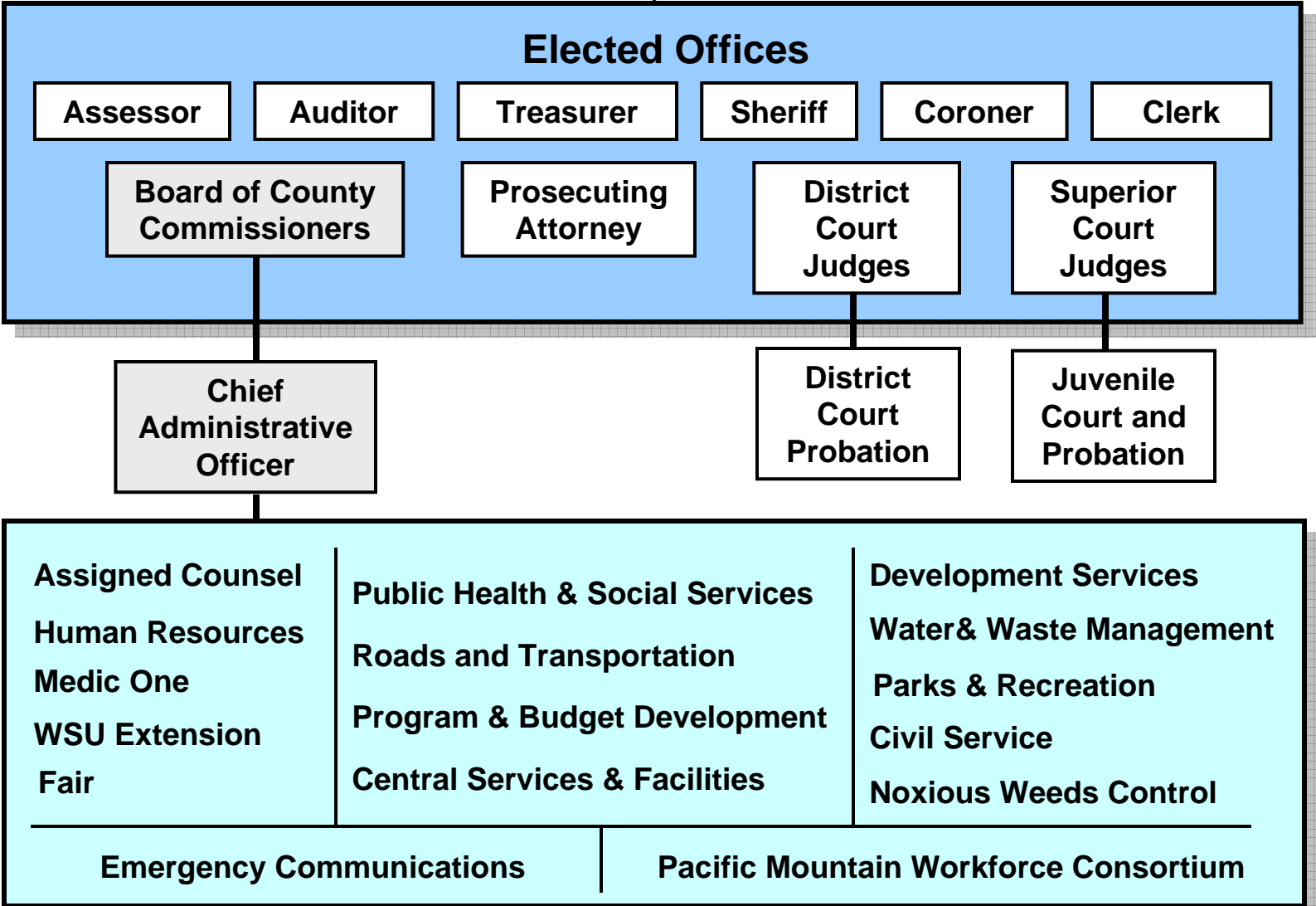
presented

November 19, 2007

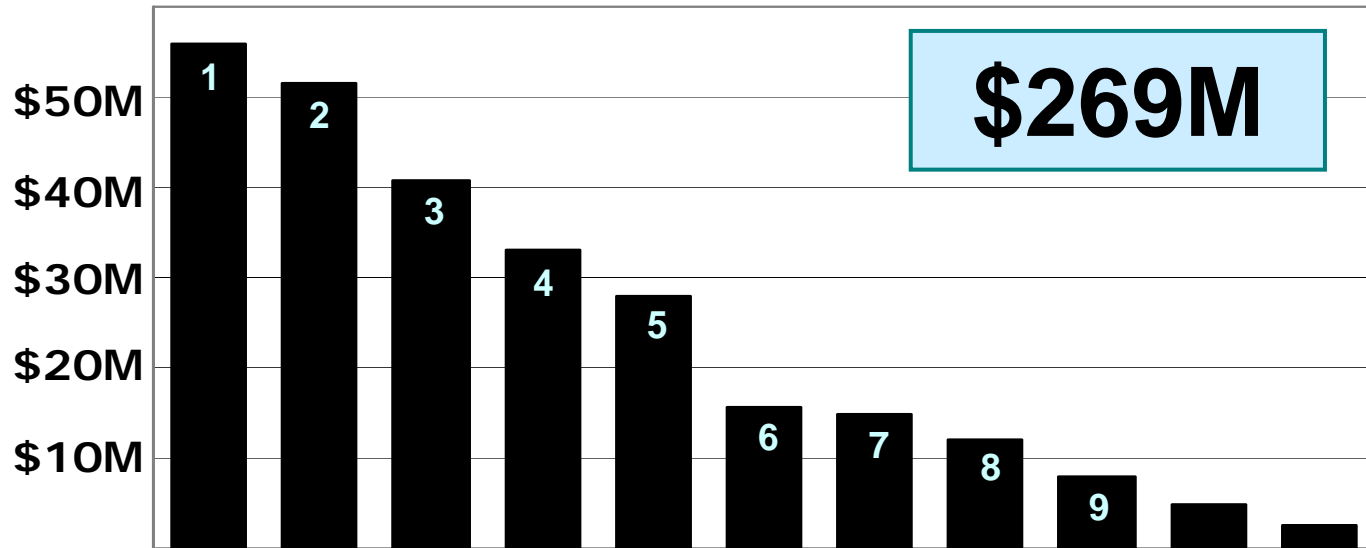
Presentation Outline

- ▶ **County Government Organization**
- ▶ **Expenditures, Revenues, Workforce**
- ▶ **Taxes**
- ▶ **Leading Issues**
- ▶ **Public Involvement**

Voters of Thurston County



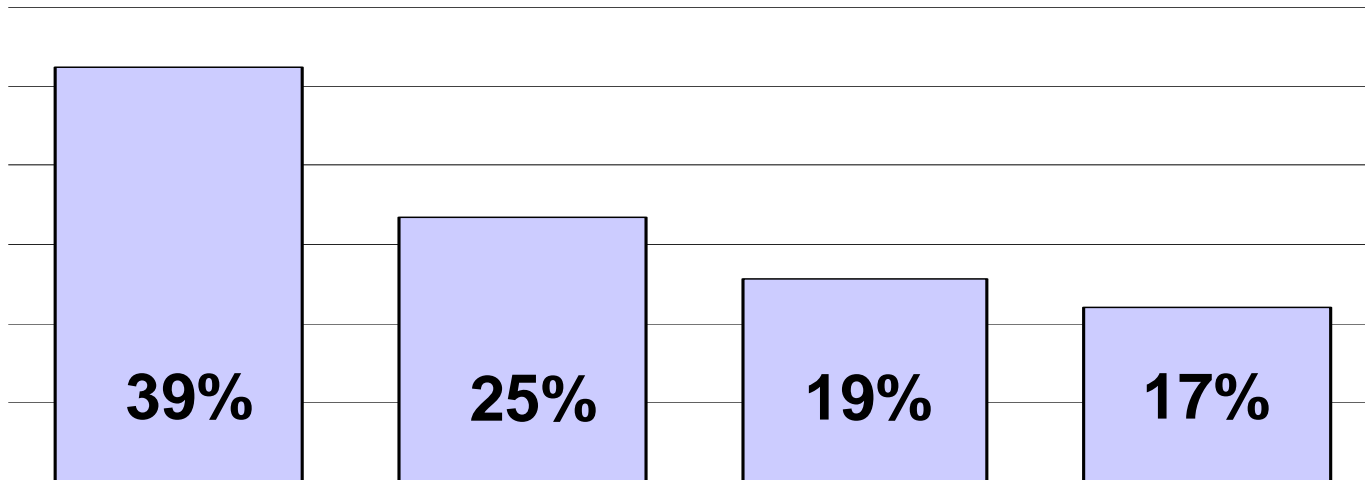
Expenditures, all Funds combined



1	Public Health, Social and Community Services	\$ 55,771,291
2	Law and Justice	\$ 51,545,007
3	Capital Facilities and Equipment	\$ 40,848,818
4	Utilities	\$ 32,985,523
5	Roads	\$ 27,888,390
6	Emergency Services	\$ 15,764,741
7	Internal Services	\$ 14,870,184
8	General Government	\$ 12,020,975
9	Planning, Development and Environment	\$ 7,933,627
10	Debt Service, Debt Holding	\$ 4,921,027
11	Parks and Fair	\$ 2,572,719
		\$267,122,302 *

* these totals exclude all ending fund balances,
inter-funds, and Non-Departmental miscellaneous

Expenditures, all Funds combined

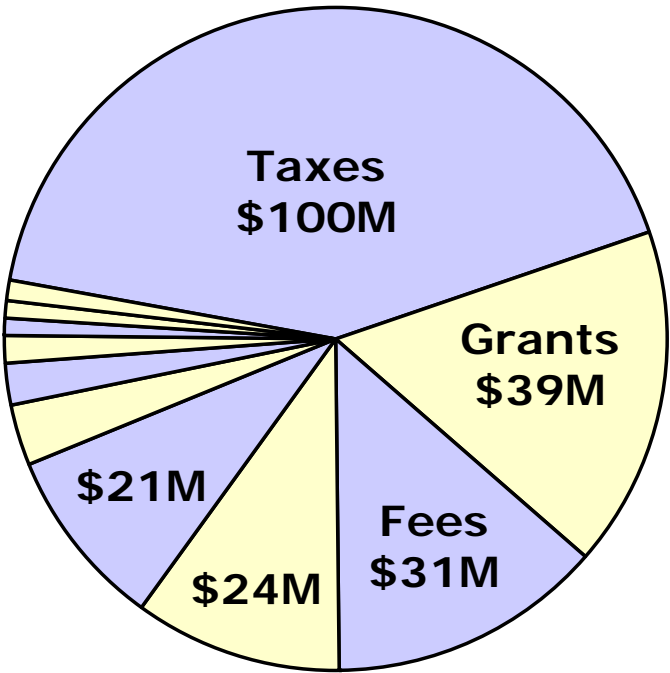


Personnel	\$ 104,712,365	39%
Professional services	\$ 66,928,202	25%
Capital outlays	\$ 51,287,519	19%
All other	\$ 44,194,216	17%
total	\$ 267,122,302	

All other includes: inter-government, supplies, equipment, utilities, insurance debt-service, rentals/leases, taxes, communications, advertising.

Revenues, all Funds combined

\$238M



Taxes	\$ 100,420,244
Grants	\$ 39,404,198
Fees and charges	\$ 31,283,537
Bond proceeds	\$ 24,000,000
Inter-government	\$ 21,108,656
Interest	\$ 7,500,359
Licenses and permits	\$ 4,590,445
Operating assessments	\$ 3,537,741
Timber/Forest-related	\$ 1,801,340
Fines, assessments and penalties	\$ 1,616,500
all other revenues	\$ 2,879,671
Total	\$238,142, 691 *

* these totals exclude all beginning fund balances and interfunds

Tax Revenues

\$100M

General Fund	\$ 51,695,534
Tax: property	\$ 29,283,268
Tax: property (roads levy diversion)	\$ 1,000,000
Tax: sales/use - general	\$ 14,343,587
Tax: sales/use - criminal justice	\$ 3,143,130
Tax: delinquent penalties/interest	\$ 2,239,400
Tax: television cable	\$ 1,522,400
Tax: gambling excise	\$ 70,060
Tax: leasehold excise	\$ 65,764
Tax: federal Fish/Wildlife in-lieu payment	\$ 28,000
Tax: PUD privilege	\$ 575

Roads	\$ 22,576,659
Tax: property	\$ 17,104,800
Tax: motor vehicle, fuels	\$ 5,451,859
Tax: leasehold excise	\$ 20,000

Medic One	\$ 8,349,411
Tax: property	\$ 8,349,411

Communications	\$ 5,637,151
Tax: sales/use: 9-1-1 communications	\$ 3,960,353
Tax: enhanced 9-1-1 cellular phone	\$ 976,570
Tax: enhanced 9-1-1 telephone	\$ 700,228

- Real estate - excise tax** \$ 5,200,000
- Detention facilities - sales tax** \$ 4,876,389
- Conservation futures - property tax** \$ 1,057,518
- Public health - property tax** \$ 703,815
- Veterans Assistance - property tax** \$ 272,117
- Fair - parimutuel tax** \$ 40,000
- Hotel/motel (lodging) tax** \$ 11,000

County Workforce

by Department

1,214 Total

Assessor	37.00
Assigned Counsel	17.00
Auditor	41.00
Central Services & Facilities	64.50
Civil Service	1.00
Clerk	44.00
Commissioners	12.00
Communications	62.50
Coroner	6.00
Development Services	64.00
District Court	33.00
Fair	3.70
Human Resources	19.55
Juvenile Court/Probation	59.00
Medic One	7.00

Noxious Weeds Control	3.25
Pacific Mountain Workforce Consortium	30.00
Parks & Recreation	13.75
Program and Budget Development	6.55
Prosecuting Attorney	69.45
Public Health	108.35
Roads and Transportation Services	156.50
Sheriff	115.25
Sheriff - Corrections	113.00
Social Services	17.75
Superior Court	44.00
Treasurer	15.00
Water & Waste Management	47.80
WSU Extension	2.50

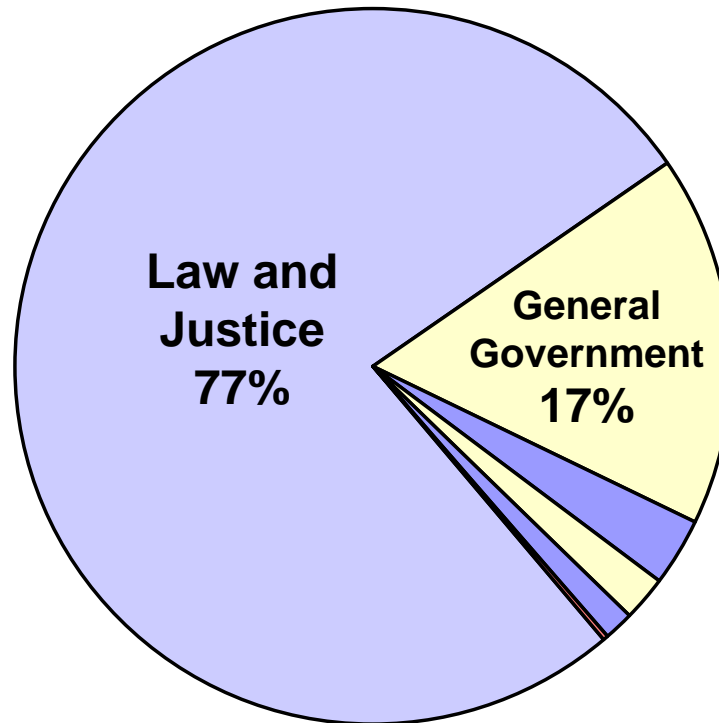
County Workforce

by Service Category

1,214 Total

Law and Justice	501.70	} 66%
Public Health, Social and Community Services	159.35	
Roads and Transportation Services	135.00	
General Government	107.45	
Internal Services	86.40	
Planning, Development and Environment	74.75	
Emergency Services	69.50	
Water & Waste Management	47.80	
Parks and Fair	17.45	
Capital Facilities and Equipment	15.00	

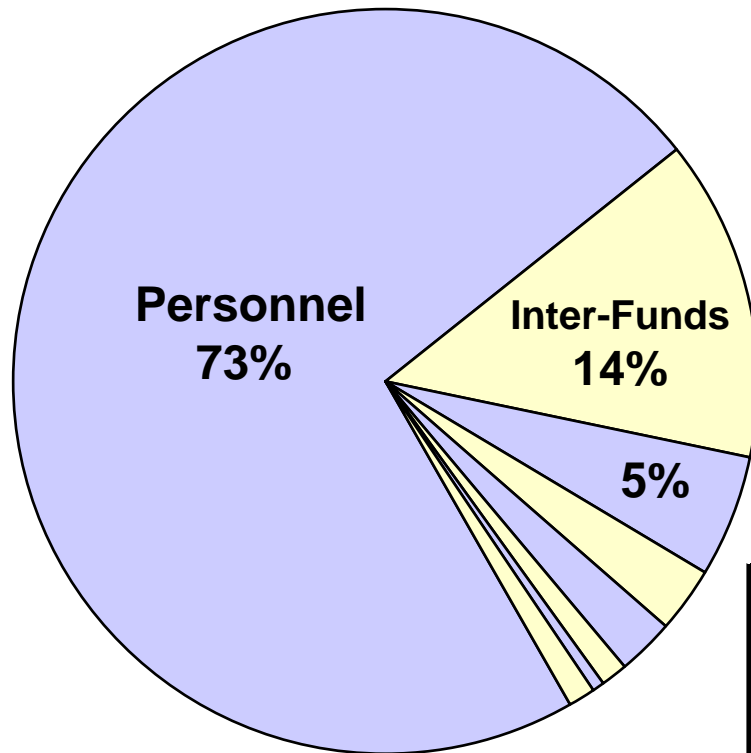
General Fund Expenditures



Law and Justice	\$ 58,068,839	77%
General Government	\$ 12,569,234	17%
Public Health, Social and Community Services	\$ 2,276,029	3%
Internal Services	\$ 1,504,510	2%
Parks and Fair	\$ 940,557	1%
Planning, Development, Environment	\$ 264,832	0%
	\$75,624,001 *	100%

* this total excludes Non-Departmental miscellaneous

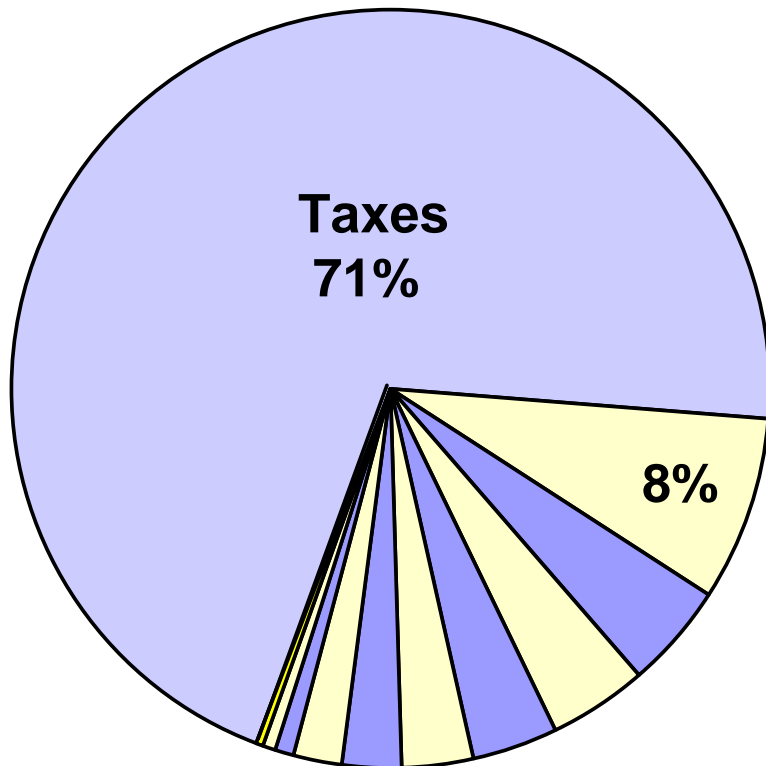
General Fund Expenditures



Personnel	\$ 55,319,478	73%
Inter-Funds	\$ 10,665,830	14%
Professional Services	\$ 3,990,840	5%
Operating Transfers	\$ 2,043,645	3%
Supplies	\$ 1,844,408	2%
Inter-government	\$ 1,006,320	1%
Communications	\$ 427,054	1%
Equipment	\$ 326,426	1%
total	\$75,624,001*	

* this total excludes
Non-Departmental miscellaneous

General Fund Revenues



Tax: property	\$ 29,283,268
Tax: property (Roads levy diversion)	\$ 1,000,000
Tax: sales/use - criminal justice	\$ 3,143,130
Tax: sales/use - general	\$ 14,343,587
Tax: television cable	\$ 1,522,400
Taxes: delinquent penalties/interest	\$ 2,238,750
Taxes: other	\$ 164,399
	\$ 51,695,534

Taxes	\$ 51,695,534	71%
Fees and charges	\$ 5,527,089	8%
Intergovernment	\$ 3,382,424	5%
Grants	\$ 2,898,632	4%
Interest	\$ 2,692,400	4%
InterFunds	\$ 2,224,946	3%
Operating transfers-in	\$ 1,754,176	2%
Fines, assessments, penalties	\$ 1,506,500	2%
Timber/Forest - related	\$ 646,740	1%
Sales of assets or property	\$ 400,250	1%
Other revenues	\$ 109,034	0%
Licenses and permits	\$ 55,975	0%
total	\$ 72,893,700	100%

Sales Tax Revenues

Vital, but Volatile

2000	3%
2001	14%
2002	17%
2003	12%
2004	6%
2005	9%
2006	11%
2007 ytd	5%

This chart shows the actual growth rate of Thurston County's general sales tax revenue stream.

These percentage changes, unpredictable from year to year, result in very large-scale variations in revenues to the County government.

General Fund Workforce

	1993	2008	
Sheriff	160.00	115.25	
Sheriff - Corrections	^incl^	111.00	
Prosecuting Attorney	46.64	66.45	
Juvenile Court/Probation	36.00	59.00	
Superior Court	25.03	41.55	
Clerk	26.00	39.00	
District Court	25.00	33.00	
Assigned Counsel	4.60	17.00	
Coroner	5.00	6.00	
Civil Service	1.08	1.00	
	329.35	489.25	159.90

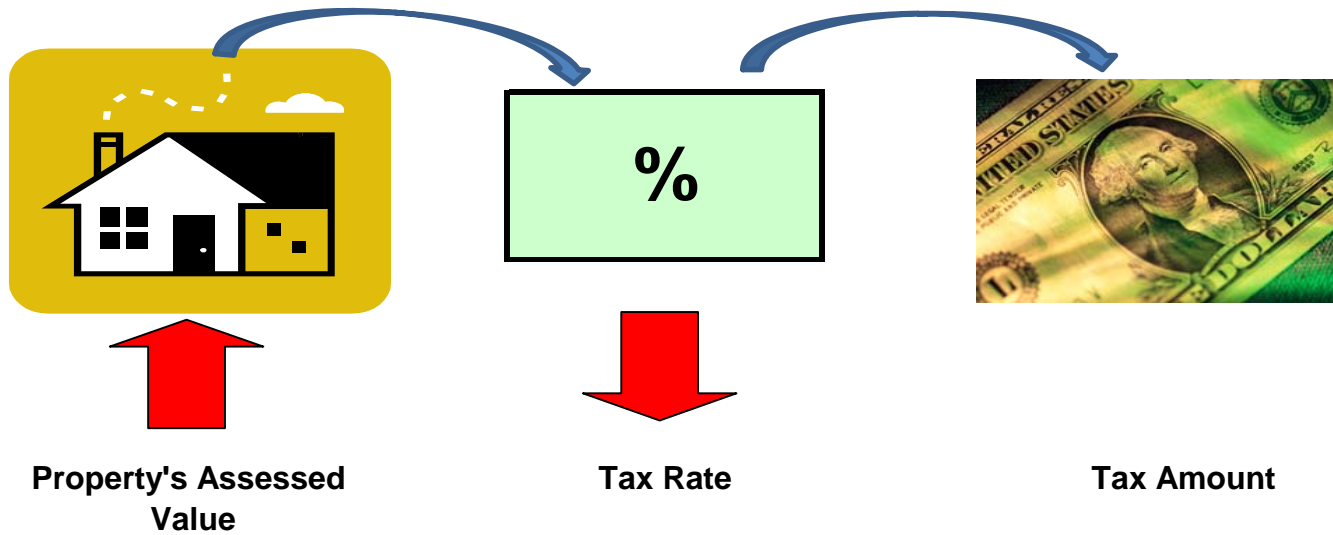
Auditor	33.00	41.00	
Assessor	38.00	37.00	
Human Resources	10.53	12.60	
Treasurer	13.00	11.90	
Commissioners	13.17	11.00	
Program & Budget Development	13.07	6.55	
WSU Extension	3.50	2.50	
Non-Departmental	2.50	-	
	126.77	122.55	(4.22)

General Fund Workforce	456.12	611.80	155.68
-------------------------------	---------------	---------------	---------------

Leading Financial Issues

- 1. Commencement of operations of ARC ... the new Accountability and Restitution Center (adult corrections facility).**
- 2. The 1% limit on property tax levy growth.**
- 3. A significant change (statewide) in distribution of local sales taxes to Counties and Cities.**
- 4. Preserving (long-term) financial sustainability for County services that are funded by local taxes.**
- 5. Providing adequate capital facilities, equipment and technology... for County service operations.**

Assessed Value, Tax Rate, Tax Payable

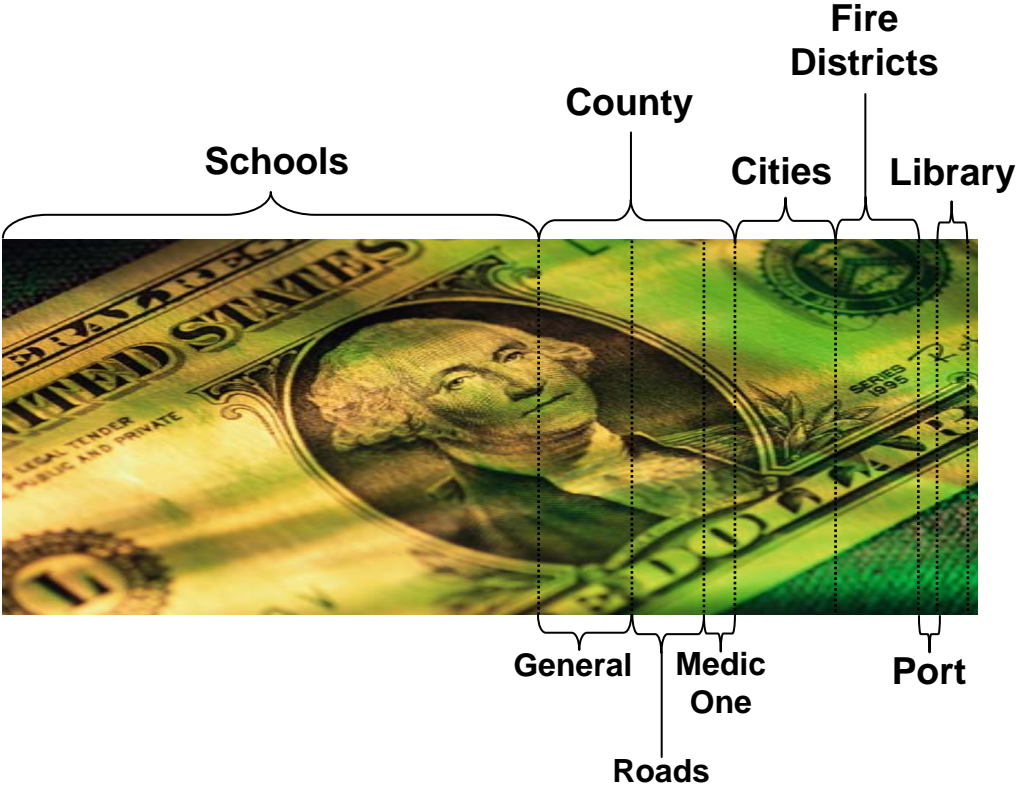


2007	\$250,000	\$1.21	\$303
2008	\$300,000	\$1.04	\$312
change:	+\$50,000 +20%	-\$0.17 -14%	+\$9 +3%

Property Taxes

In Thurston County, **58%** of property taxes paid are for **Schools**.

Schools (local)	37.36%
Schools (state)	20.87%
Cities and Towns	9.32%
Fire Districts	6.36%
Library District	3.49%
Port of Olympia	1.66%
Public Utilities District	0.08%
Cemetery Districts	0.06%
Tanglewilde Park	0.02%
County (general)	10.84%
Roads District	6.56%
Medic One	3.00%
Conservation Futures	0.38%
	100.00%



Each of Thurston County's levies are **smaller** percentages today than in the past.

Public Review, Public Involvement

Thurston County's 2008-Preliminary Budget is now available for public review:

On the County's website: www.co.thurston.wa.us/budget
... and at local Libraries.

Comments upon the proposed budget can be conveyed to County Commissioners via email, or by telephone (360-786-5440), or by mail (2000 Lakeridge Dr SW, Olympia, WA 98502).

The Public Hearing on the proposed 2008 budget is scheduled on Monday, December 3rd, 2007, starting at 6:00 p.m., in room 280, Thurston County Courthouse.