

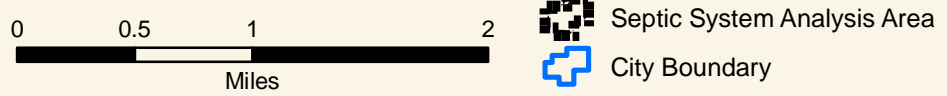
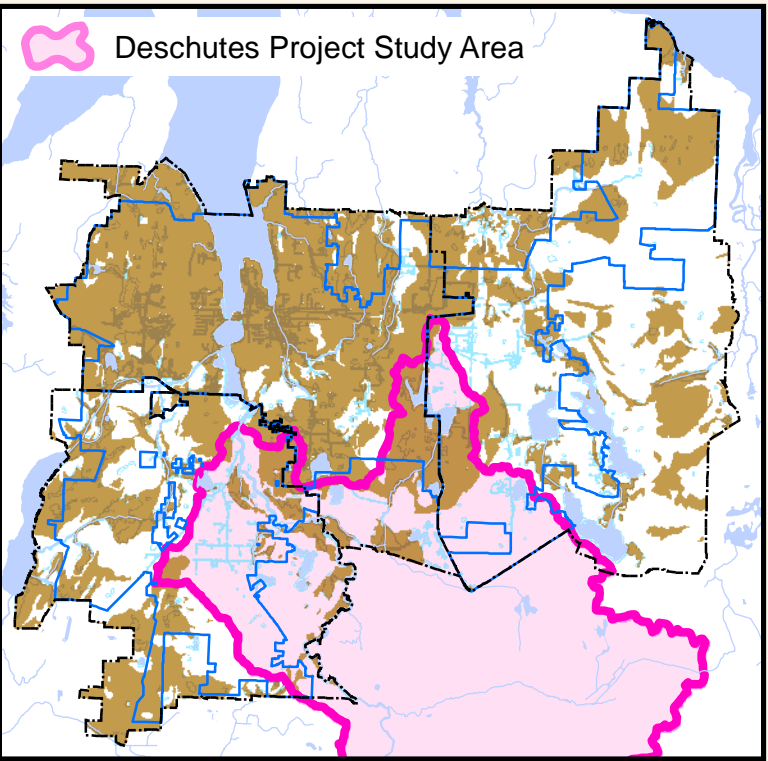
DRAFT

Map 10: Urban Area Septic System Analysis Surface Water Criteria 2014

Surface Water Risk

- Proximity to Water¹
- Soils Criteria²
- Both Criteria

Surface Water Criteria
¹Proximity to Water defined as -
Within 100 feet of lake, stream, wetland, or mapped stormwater drainage feature connected to surface water
²Soils Criteria -
Soil hydrologic groups C and D (Impermeable soils)
Soil hydrologic groups A&B with water table less than 6 feet below surface



Thurston County makes every effort to ensure that this map is a true and accurate representation of the work of County government. However, the County and all related personnel make no warranty, expressed or implied, regarding the accuracy, completeness or convenience of any information disclosed on this map. Nor does the County accept liability for any damage or injury caused by the use of this map.

To the fullest extent permissible pursuant to applicable law, Thurston County disclaims all warranties, express or implied, including, but not limited to, implied warranties of merchant ability, data fitness for a particular purpose, and non-infringements of proprietary rights.

Under no circumstances, including, but not limited to, negligence, shall Thurston County be liable for any direct, indirect, incidental, special or consequential damages that result from the use of, or the inability to use, Thurston County materials.

Map Created by kah on 3/26/2015

