

DRAFT

Map 12: Urban Area Septic System Analysis Groundwater Risk Categories - Neighborhoods

Groundwater & Density Overall Score

- No Septic Parcels Reported

1 - Low Density

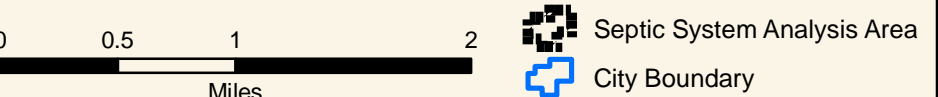
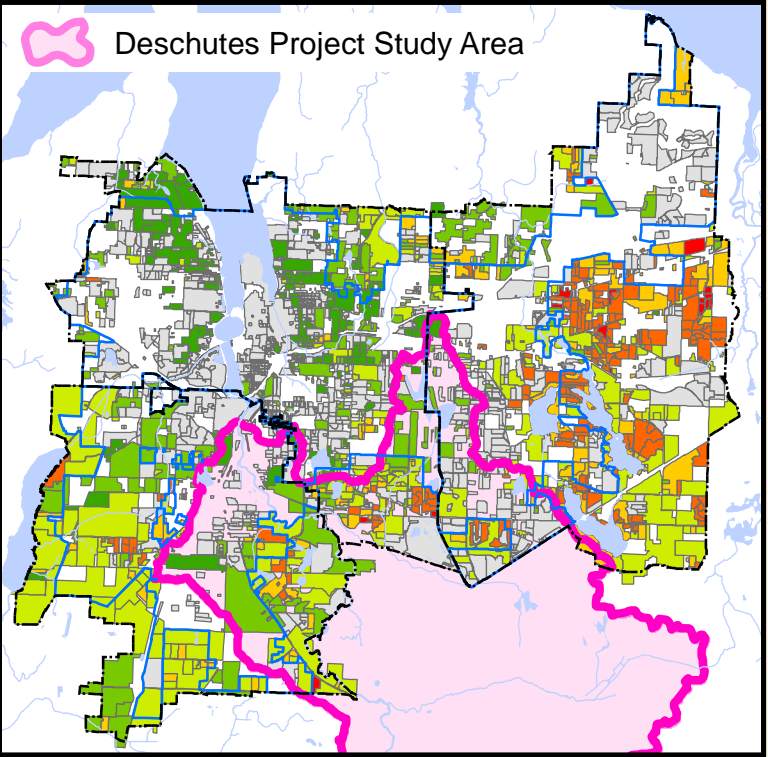
2 - Low + 1 Risk Category OR Medium

3 - Low + 2 Risk Categories OR Medium + 1 Risk Category OR High
- 4 - Medium + 2 Risk Categories OR High + 1 Risk Category OR Very High

5 - High + 2 Risk Categories OR Very High + 1 Risk Category

6 - Very High + 2 Risk Categories

- Groundwater Criteria
- Wellhead Protection Area -
For Group A and B public water systems (data source WDOH) or public water system wells with 100 foot buffer wellhead (data source Thurston County) representations.
- Soils Criteria -
Soil hydrologic group A (Porous soils)
Soil hydrologic group B with water table deeper than 6 feet
- Neighborhood Density Calculation Method
1. Identified parcel served by septic systems based on city and county data and inventories.
 2. Assigned number of residential units or equivalent residential units (ERUs) to each septic parcel based on land use codes (single family, commercial, multi-family) and county permit records. For non-residential parcels, an ERU is defined as 450 gallons per day of sewage.
 3. Grouped individual parcels into neighborhoods based on subdivision plats and phases of subdivisions, or lots in an area with similar characteristics
 4. Used total number of ERUs within a neighborhood divided by total acres within the neighborhood to calculate density, as ERUs/acre.
 5. Assigned each neighborhood a density score of 1 through 4, based on the calculated ERUs per acre.



NORTH

Thurston GeoData Center

Thurston County

Thurston County makes every effort to ensure that this map is a true and accurate representation of the work of County government. However, the County and all related personnel make no warranty, expressed or implied, regarding the accuracy, completeness or convenience of any information disclosed on this map. Nor does the County accept liability for any damage or injury caused by the use of this map.

To the fullest extent permissible pursuant to applicable law, Thurston County disclaims all warranties, express or implied, including, but not limited to, implied warranties of merchant ability, data fitness for a particular purpose, and non-infringements of proprietary rights.

Under no circumstances, including, but not limited to, negligence, shall Thurston County be liable for any direct, indirect, incidental, special or consequential damages that result from the use of, or the inability to use, Thurston County materials.

Map Created by kah on 3/26/2015