

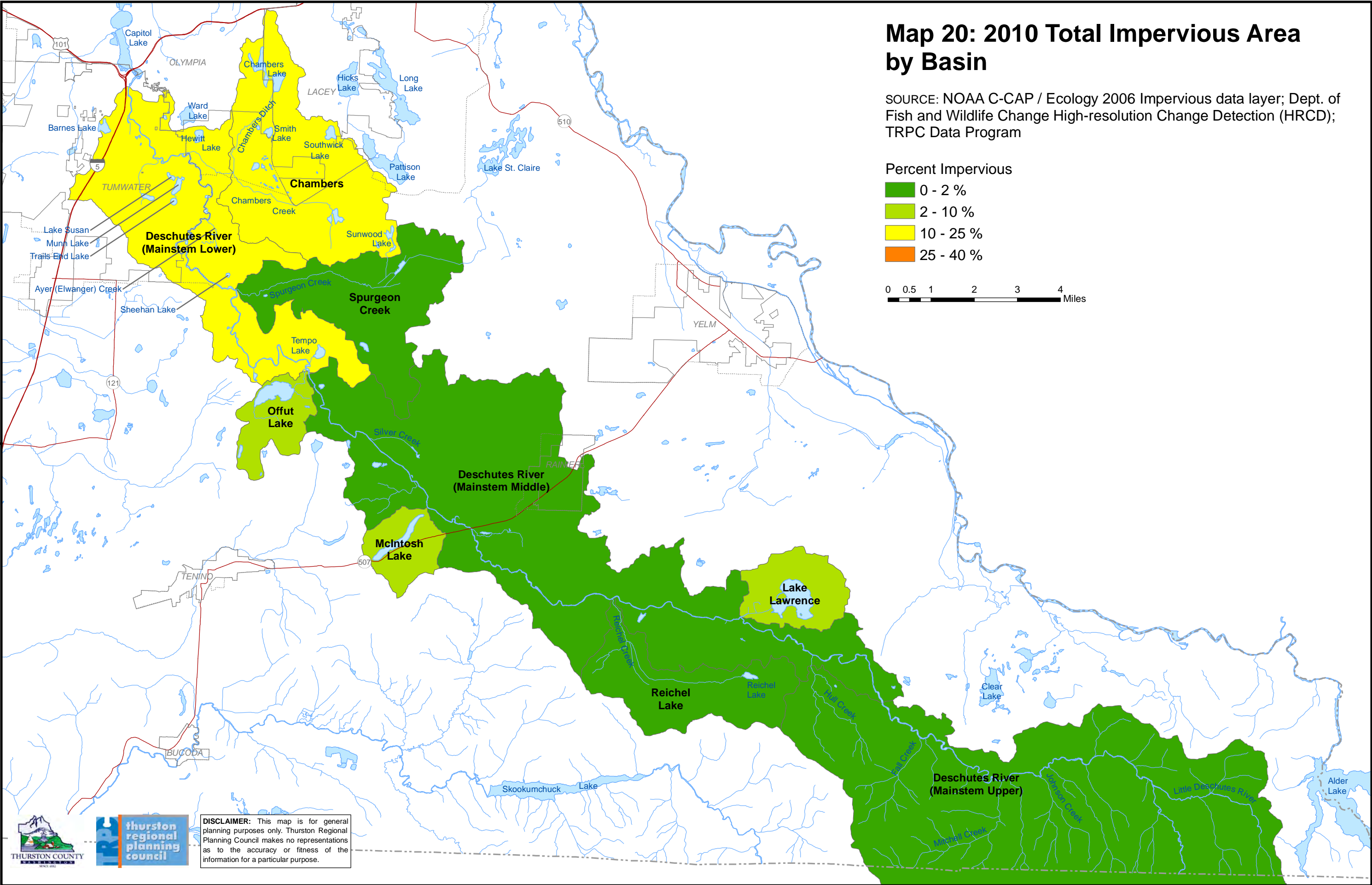
# Map 20: 2010 Total Impervious Area by Basin

SOURCE: NOAA C-CAP / Ecology 2006 Impervious data layer; Dept. of Fish and Wildlife Change High-resolution Change Detection (HRCD); TRPC Data Program

Percent Impervious

- 0 - 2 %
- 2 - 10 %
- 10 - 25 %
- 25 - 40 %

0 0.5 1 2 3 4 Miles



**DISCLAIMER:** This map is for general planning purposes only. Thurston Regional Planning Council makes no representations as to the accuracy or fitness of the information for a particular purpose.