

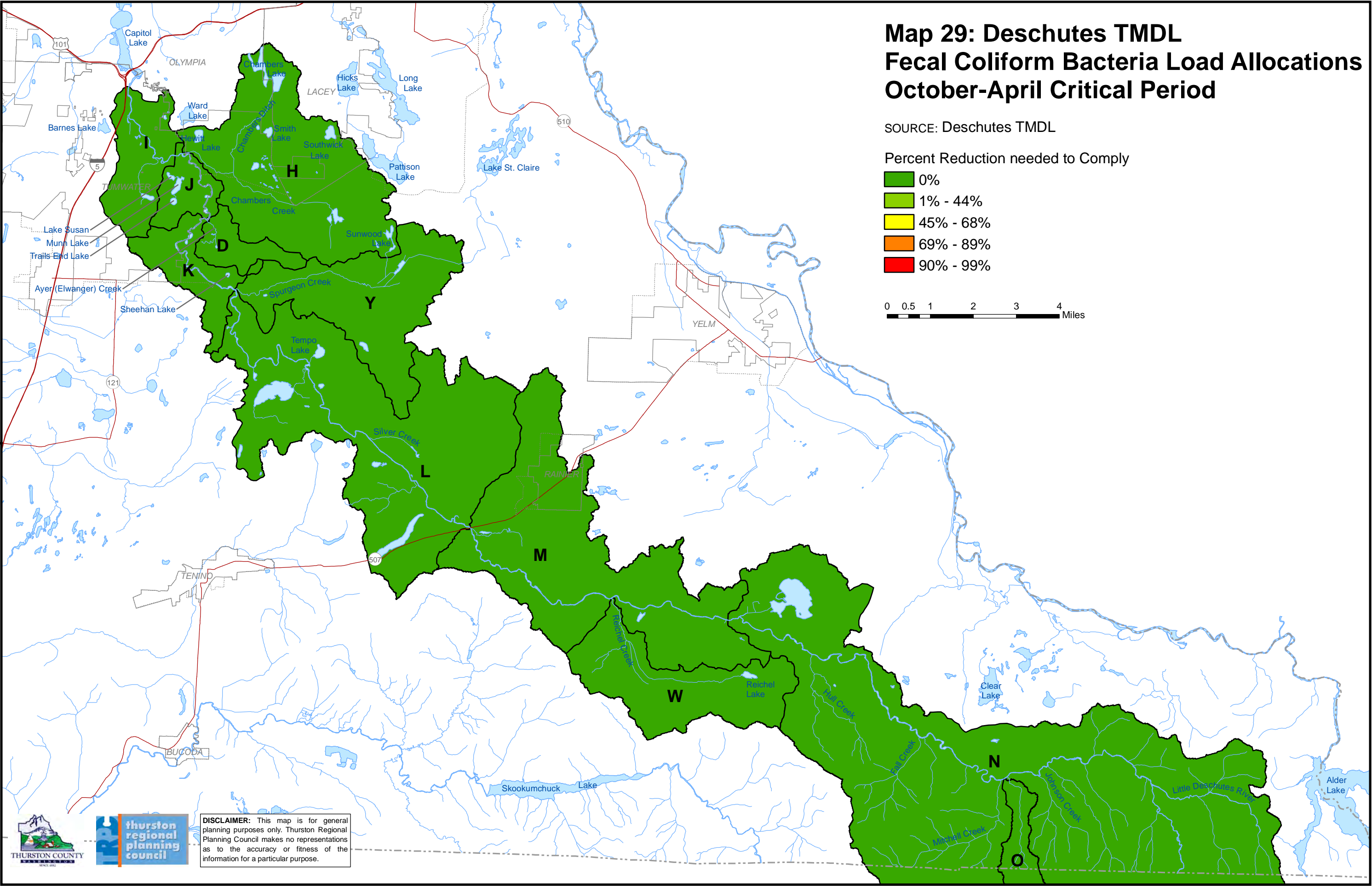
Map 29: Deschutes TMDL Fecal Coliform Bacteria Load Allocations October-April Critical Period

SOURCE: Deschutes TMDL

Percent Reduction needed to Comply

- 0%
- 1% - 44%
- 45% - 68%
- 69% - 89%
- 90% - 99%

0 0.5 1 2 3 4 Miles



DISCLAIMER: This map is for general planning purposes only. Thurston Regional Planning Council makes no representations as to the accuracy or fitness of the information for a particular purpose.