



MCLANE BASIN

COMMUNITY WATERSHED WORKSHOP

Thurston County Long-Range Planning & TRPC
October 9, 2014

Tonight's Agenda

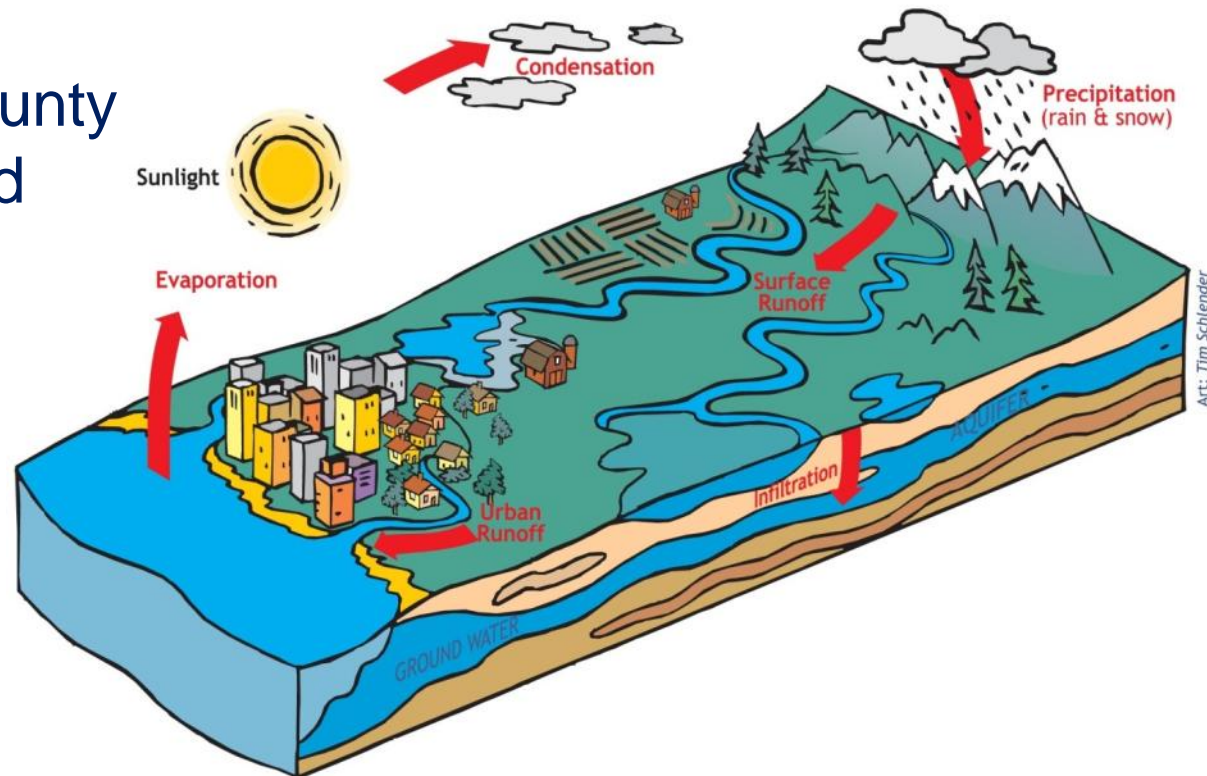
- Welcome
- *Presentation: Guiding Growth – Healthy Watersheds Project*
 - ▣ Background
 - ▣ Alternative Land Use Scenarios
 - ▣ Next Steps
- Table Discussions



Guiding Growth – Healthy Watersheds

Project Background

- Thurston County is one of the fastest growing in Western Washington – How do we best protect water resources as our region grows?
- 2009: Thurston County and TRPC received a grant from EPA to conduct watershed-based planning



Guiding Growth – Healthy Watersheds

Project Background

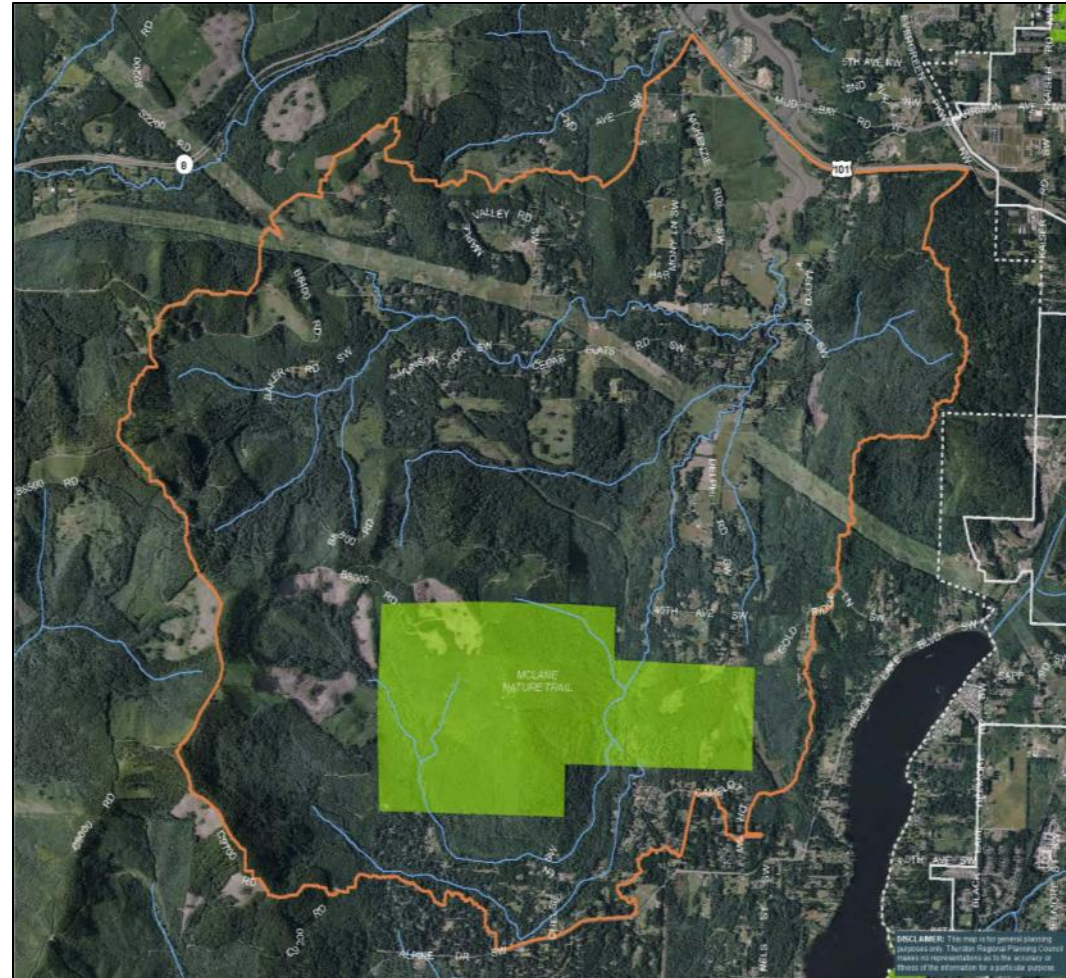
- Assessed current conditions for 69 basins
- April 2013: Selected 3 basins for focus
 - **McLane Creek**
 - Black Lake (October 30 workshop)
 - Woodard Creek (October 22 workshop)
- 2013/2014: Gathered information and conducted analyses on each basin
- Now: Developing recommendations for future management

Where is the McLane Creek Basin?



Where is the McLane Creek Basin?

- ~ 7,000 acres
- McLane, Swift, Cedar Flats, Beatty creeks discharge into Eld Inlet
- Jurisdiction
 - Rural Thurston County
 - Capitol Forest & McLane Creek Nature Trail
- Mix of forestry, agriculture, and residential land uses



What is the current condition of McLane Creek Basin?



73%+ Tree
Canopy

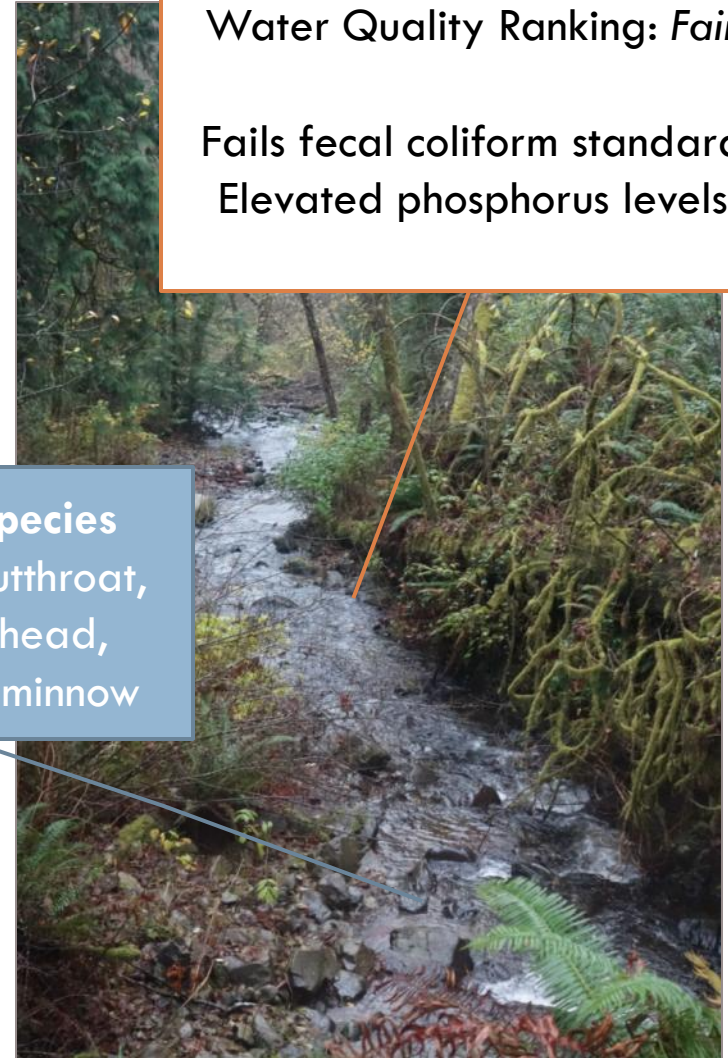


2-3% Total
Impervious
Surfaces

Habitat & Species
chum, coho, cutthroat,
winter steelhead,
Olympic mudminnow

Water Quality Ranking: *Fair*

Fails fecal coliform standard
Elevated phosphorus levels



What are the water resource concerns in McLane Creek Basin?

- ❑ Loss of tree cover
- ❑ Water flow and quality
- ❑ Riparian corridors & tree cover
- ❑ Population growth & development



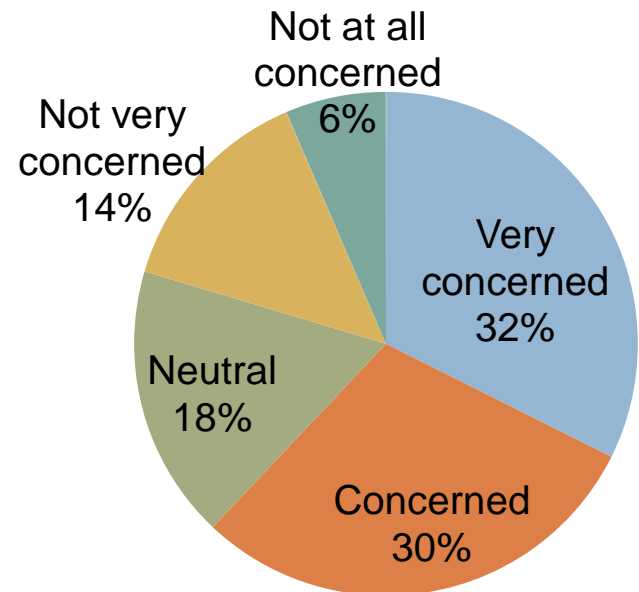
Public Outreach

- ❑ Summer 2013: Public survey sent by mail
- ❑ April 2014: Community Workshop
- ❑ High level of concern about water quality

- ❑ **Important:**

- Clean drinking water
- Puget Sound WQ
- Healthy salmon runs
- Private property rights
- Preserving working forests and farms

How concerned are you about water quality in McLane Creek Basin?



Public Outreach

- Key Themes and Values
 - ▣ Preserving rural lifestyle
 - ▣ Protecting habitat for wildlife
 - ▣ Desire for more recreational opportunities

- How would you hope to describe the McLane Creek basin in thirty years?
 - ▣ Much the same as it is today, or improved



McLane Basin: *Draft* Goals

- Protect basin-wide ecological functions
- Preserve rural uses, including working forests and farms
- Protect (and improve) water quality
- Protect habitat for fish and wildlife
- Restore stream and shoreline functions where degraded
- Increase recreational opportunities



Alternative Land Use Scenarios

1. **Historic Conditions**

- ▣ Forested, with some prairie and wetlands

2. **Current Conditions**

- ▣ Current development, impervious surfaces, and stormwater

3. **Planned Future Trend**

- ▣ Current regulations carried out into the future

4. **Alternative Futures**

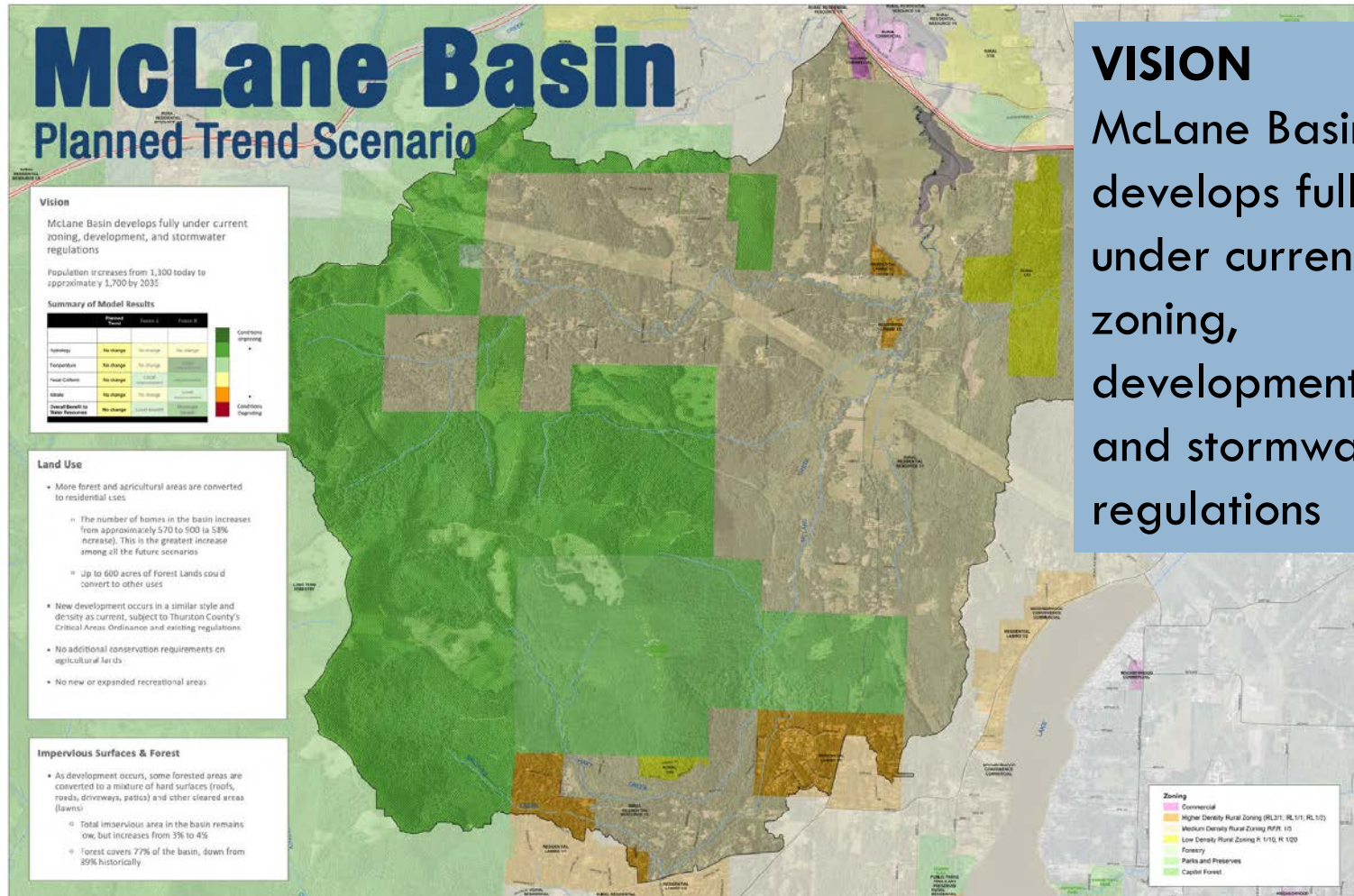
- ▣ Changes to land use and development regulations
- ▣ Restoration of riparian areas and wetlands
- ▣ Stormwater retrofits for older development

Alternative Land Use Scenarios

- Historic → Current
 - ▣ More than 10% Forest cover lost
 - ▣ Some loss of wetland areas
 - ▣ Changes from historic to current conditions greater than from future growth



Planned Trend Scenario



VISION

McLane Basin develops fully under current zoning, development, and stormwater regulations

Planned Trend Scenario: Outcomes

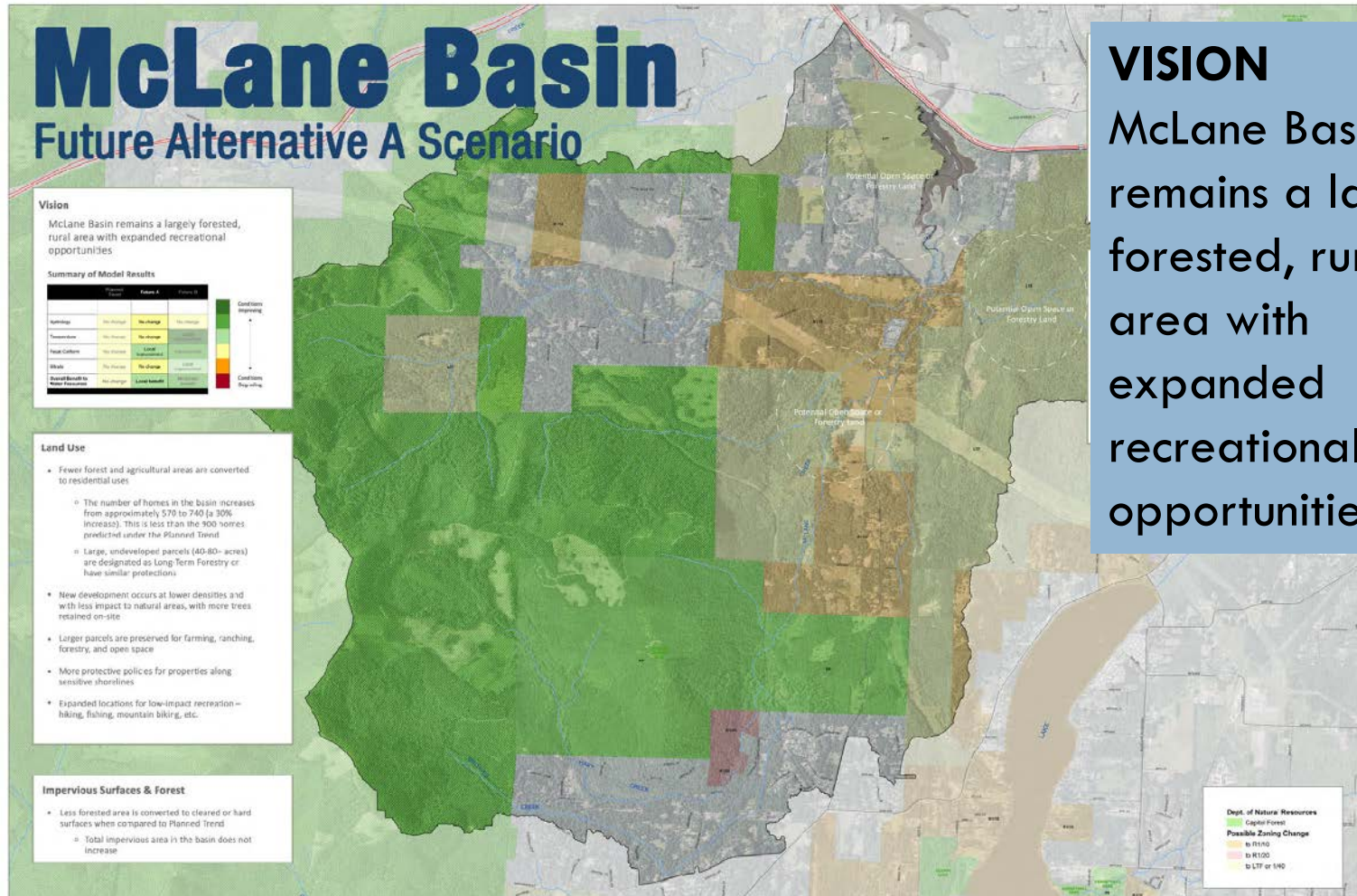
□ Land Use

- More forest and agricultural areas are converted to residential
 - ~330 additional dwelling units
 - As much as 600 acres of forest lands converted to other uses
 - Greater number of septics in higher risk areas

□ Environmental Outcomes

- Stream temperatures often exceed threshold for salmon habitat
- Bacteria and nutrient levels in streams remain elevated
- Potential impacts to salmon populations and shellfish beds
- Fragmentation of habitat

Future Alternative A Scenario



Future Alternative A: Outcomes

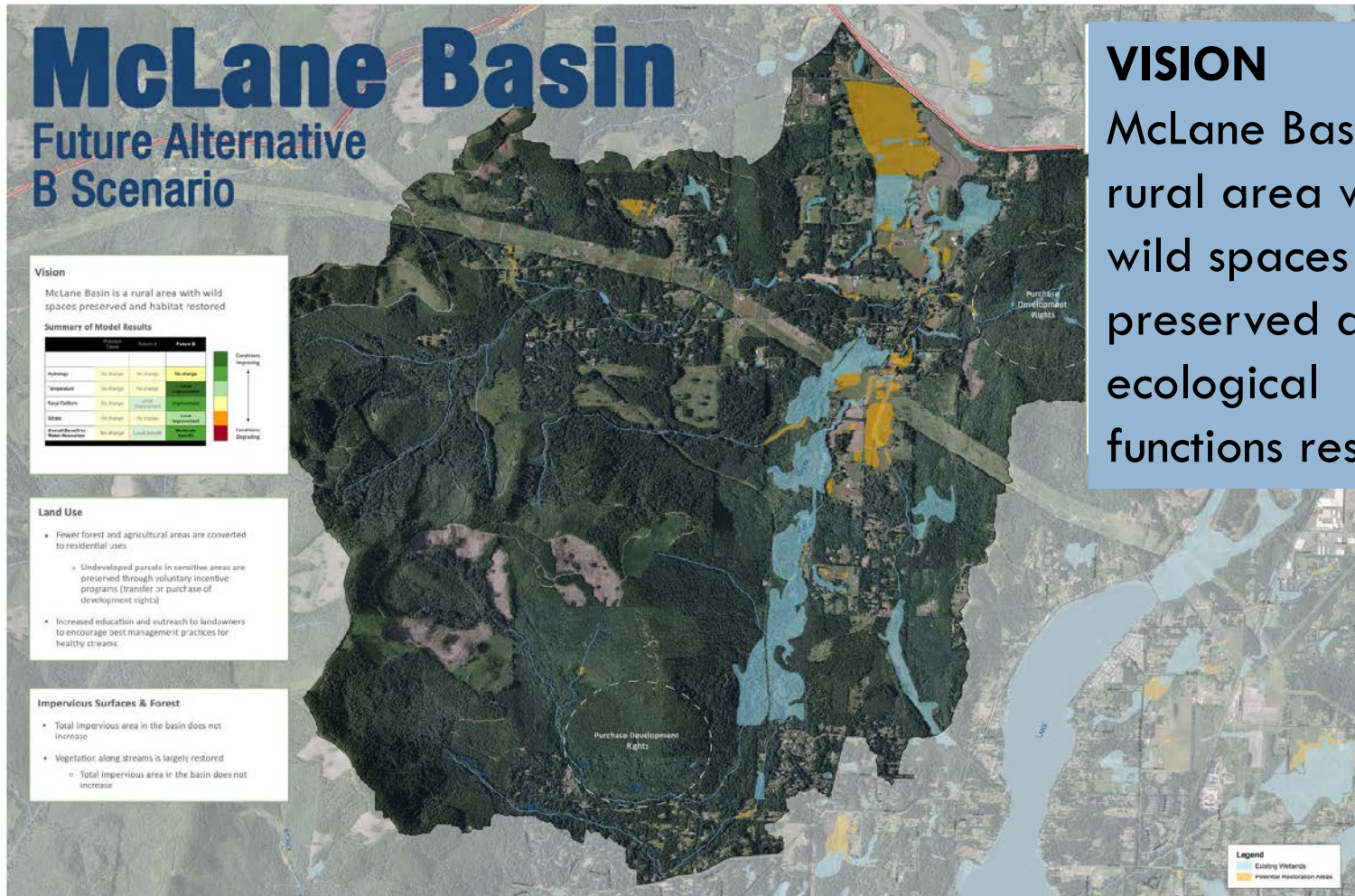
□ Land Use

- Fewer forest and agricultural areas are converted to residential
 - ~110 additional dwelling units
 - Larger, undeveloped parcels zoned at lower density
 - More protective policies along shorelines
 - Expanded locations for recreation

□ Environmental Outcomes

- Stream temperatures and nutrients remain the same as current
- Bacteria levels reduced in some areas
- Habitat connectivity preserved

Future Alternative B Scenario



Future Alternative B: Outcomes

□ Land Use

- Undeveloped parcels preserved through incentive programs, purchase of development rights
- Vegetation along streams restored
- Some wetland areas restored
- Education and outreach increased

□ Environmental Outcomes

- Stream temperatures reduced to near historic levels
- Bacteria and nutrient levels improved
- Benefits to salmon and shellfish

Guiding Growth – Healthy Watersheds

Next Steps

- Preferred Recommendations

can include one of the future alternatives, mix and match from all three, or list new alternatives

- Final Report – Winter 2015/2015

- Public comment period
- Planning Commission
- Board of County Commissioners



Guiding Growth – Healthy Watersheds

Next Steps

- Tonight
 - ▣ Question & Answers
 - ▣ Break for Table Discussions
 - ▣ Dot voting



Guiding Growth – Healthy Watersheds

Table Discussion Questions

- What goals and strategies are the most important to include in a final list of recommendations?
- What features would you want to see included in a final plan?
Which would concern you?
- What could be added?



Guiding Growth – Healthy Watersheds Contact

Questions? Comments?

Contact:

Allison Osterberg
Associate Planner
Thurston County
(360) 754-3355 x7011
osterba@co.thurston.wa.us



This project has been funded wholly or in part by the United States Environmental Protection Agency under assistance agreement (PO - 00J12401-0) to Thurston County. The contents do not necessarily reflect the views and policies of the Environmental Protection Agency, nor does mention of trade names or commercial products constitute endorsement or recommendation for use.