

THURSTON COUNTY

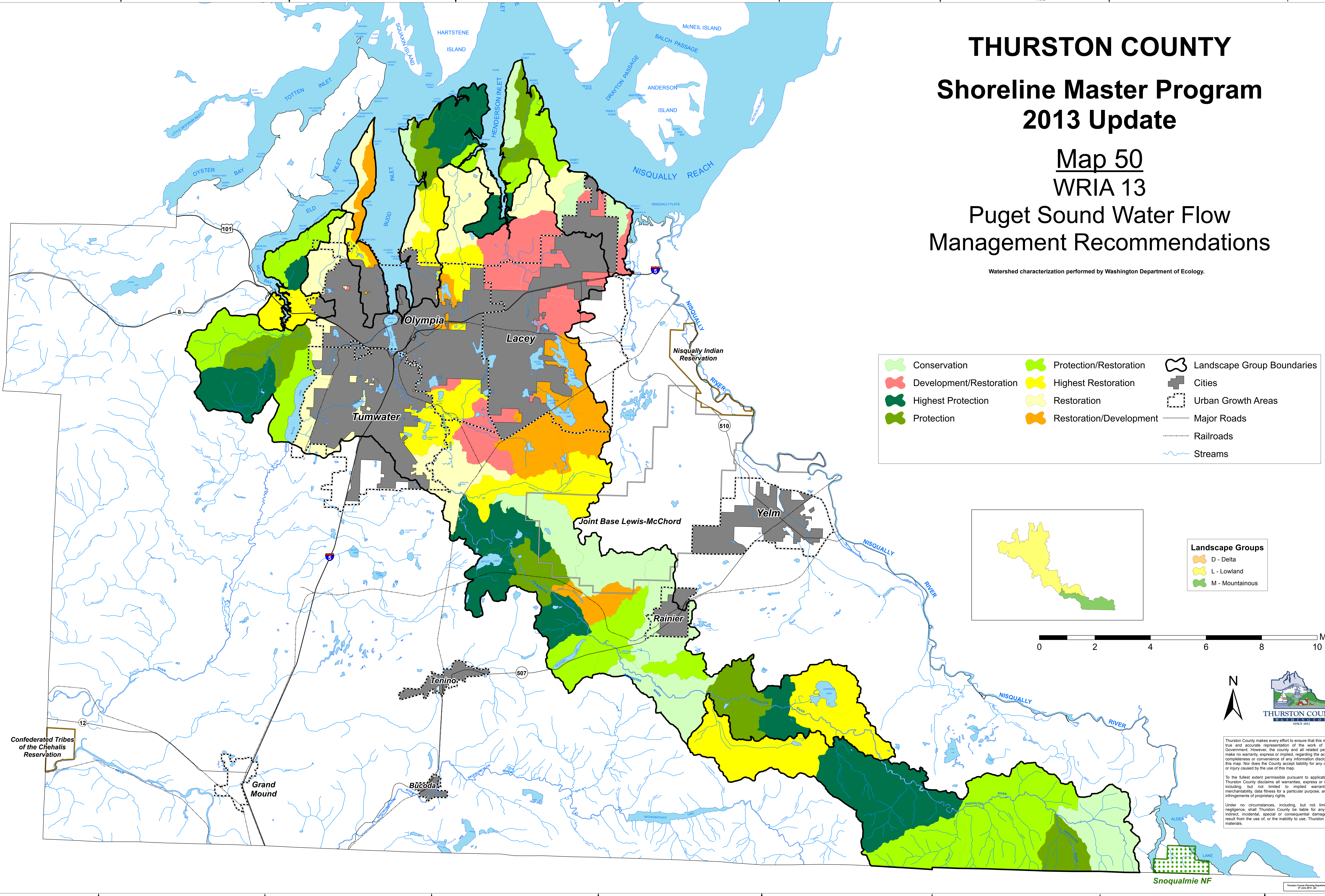
Shoreline Master Program

2013 Update

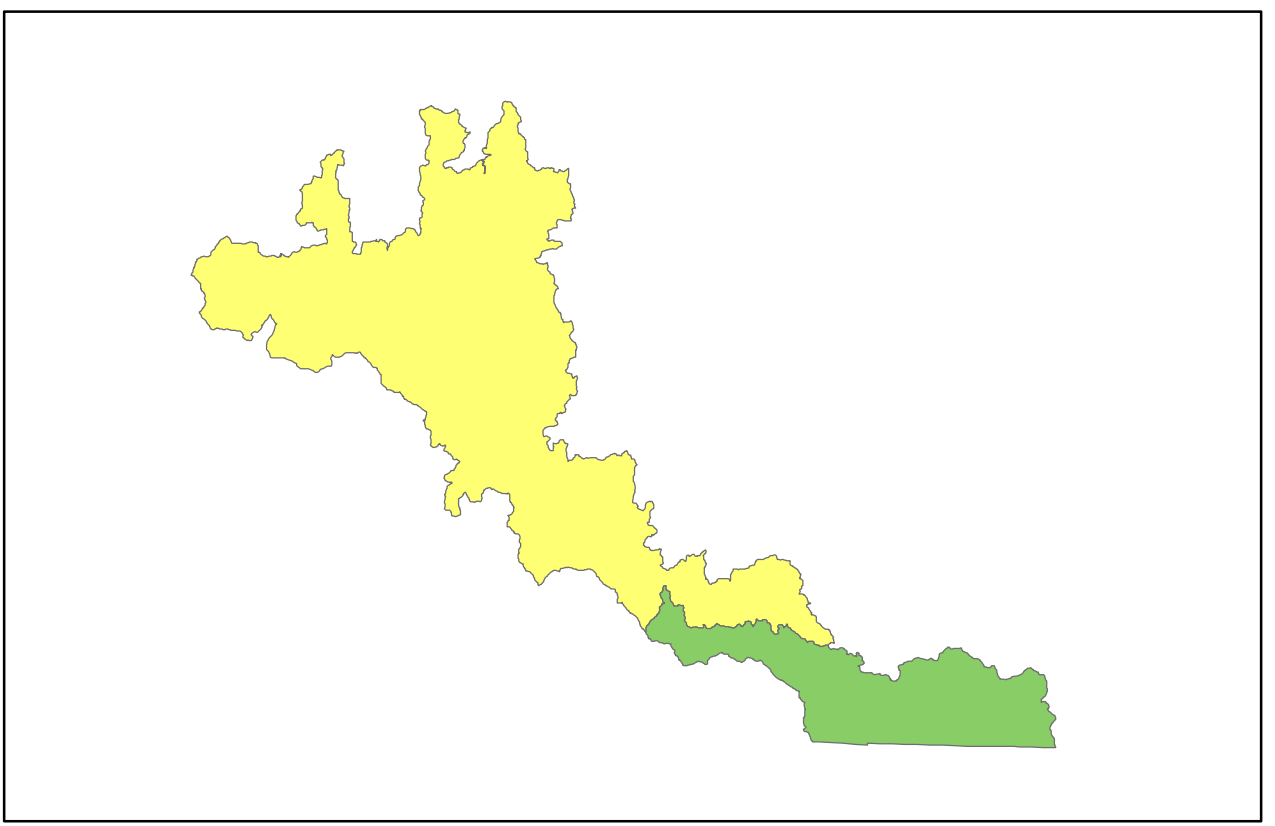
Map 50
WRIA 13

Puget Sound Water Flow Management Recommendations

Watershed characterization performed by Washington Department of Ecology.

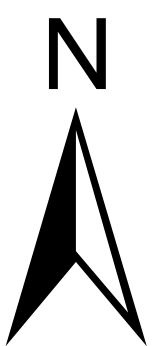


- | | | |
|-------------------------|-------------------------|----------------------------|
| Conservation | Protection/Restoration | Landscape Group Boundaries |
| Development/Restoration | Highest Restoration | Cities |
| Highest Protection | Restoration | Urban Growth Areas |
| Protection | Restoration/Development | Major Roads |
| | | Railroads |
| | | Streams |



- Landscape Groups**
- D - Delta
 - L - Lowland
 - M - Mountainous

0 2 4 6 8 10 Miles



Thurston County makes every effort to ensure that this map is a true and accurate representation of the work of County Government. However, the county and all related personnel make no warranty, express or implied, regarding the accuracy, completeness or convenience of any information disclosed on this map. Nor does the County accept liability for any damage or injury caused by the use of this map.

To the fullest extent permissible pursuant to applicable law, Thurston County disclaims all warranties, express or implied, including, but not limited to implied warranties of merchantability, data fitness for a particular purpose, and non-infringement of proprietary rights.

Under no circumstances, including, but not limited to negligence, shall Thurston County be liable for any direct, indirect, incidental, special or consequential damages that result from the use of, or the inability to use, Thurston County materials.