

THURSTON COUNTY

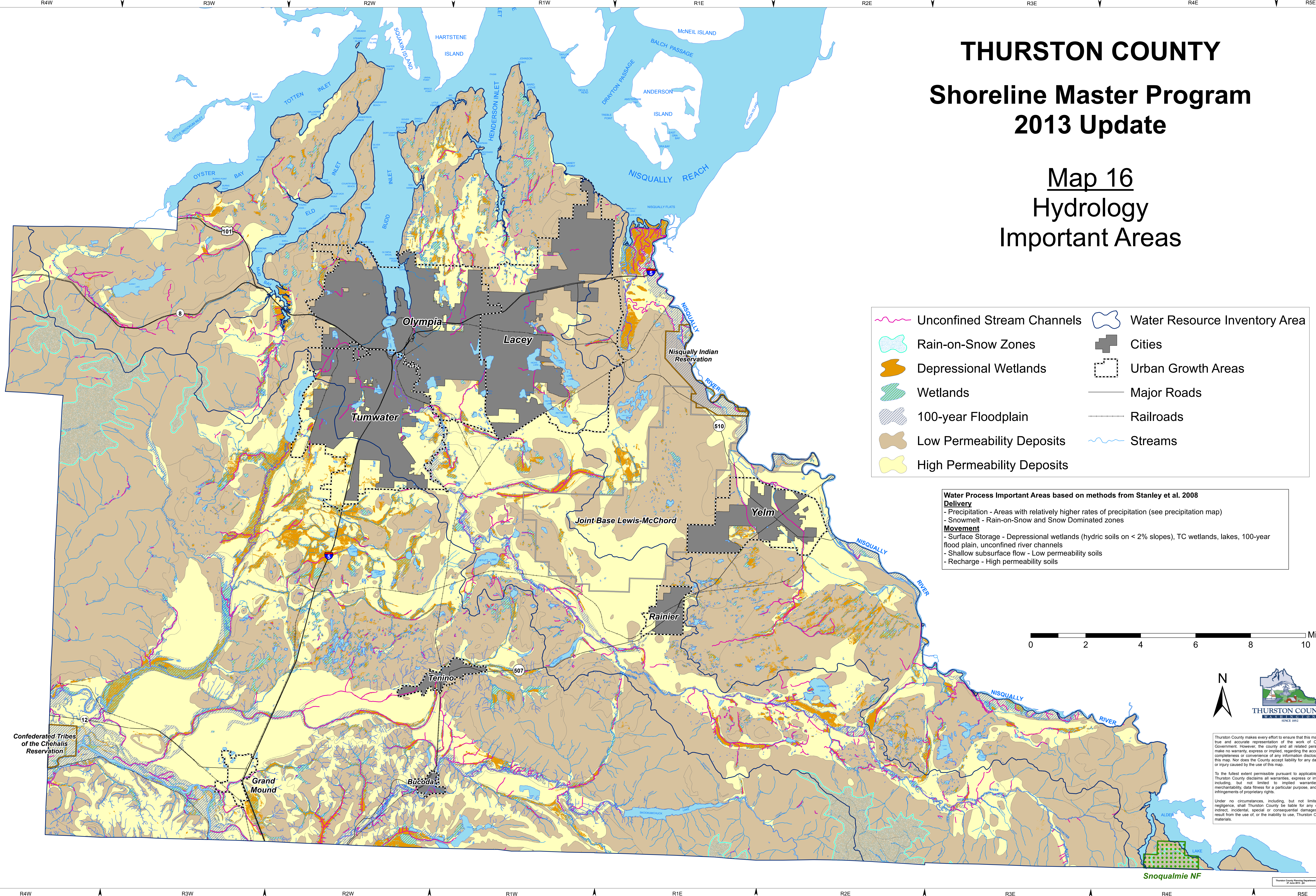
Shoreline Master Program

2013 Update

Map 16

Hydrology

Important Areas



- | | |
|----------------------------|-------------------------------|
| Unconfined Stream Channels | Water Resource Inventory Area |
| Rain-on-Snow Zones | Cities |
| Depressional Wetlands | Urban Growth Areas |
| Wetlands | Major Roads |
| 100-year Floodplain | Railroads |
| Low Permeability Deposits | Streams |
| High Permeability Deposits | |

Water Process Important Areas based on methods from Stanley et al. 2008

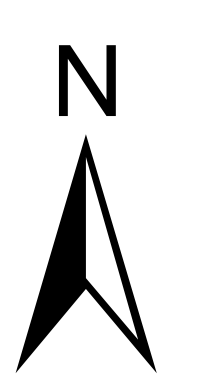
Delivery

- Precipitation - Areas with relatively higher rates of precipitation (see precipitation map)
- Snowmelt - Rain-on-Snow and Snow Dominated zones

Movement

- Surface Storage - Depressional wetlands (hydric soils on < 2% slopes), TC wetlands, lakes, 100-year flood plain, unconfined river channels
- Shallow subsurface flow - Low permeability soils
- Recharge - High permeability soils

0 2 4 6 8 10 Miles



Thurston County makes every effort to ensure that this map is a true and accurate representation of the work of County Government. However, the county and all related personnel make no warranty, express or implied, regarding the accuracy, completeness or convenience of any information disclosed on this map. Nor does the County accept liability for any damage or injury caused by the use of this map.

To the fullest extent permissible pursuant to applicable law, Thurston County disclaims all warranties, express or implied, including, but not limited to implied warranties of merchantability, data fitness for a particular purpose, and non-infringements of proprietary rights.

Under no circumstances, including, but not limited to negligence, shall Thurston County be liable for any direct, indirect, incidental, special or consequential damages that result from the use of, or the inability to use, Thurston County materials.