

# Map 1: Thurston County Watersheds

## In WRIAs 13 & 14

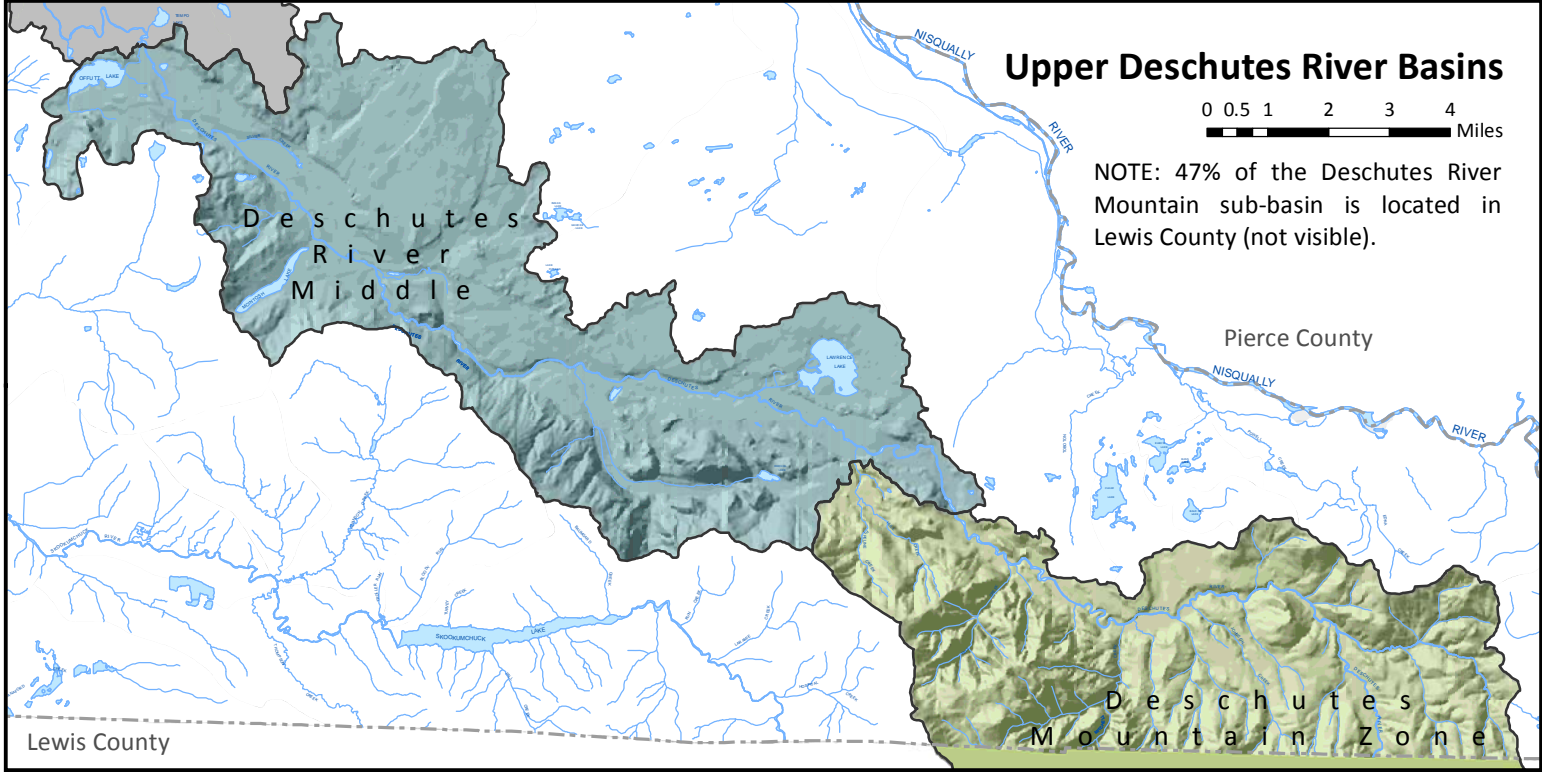
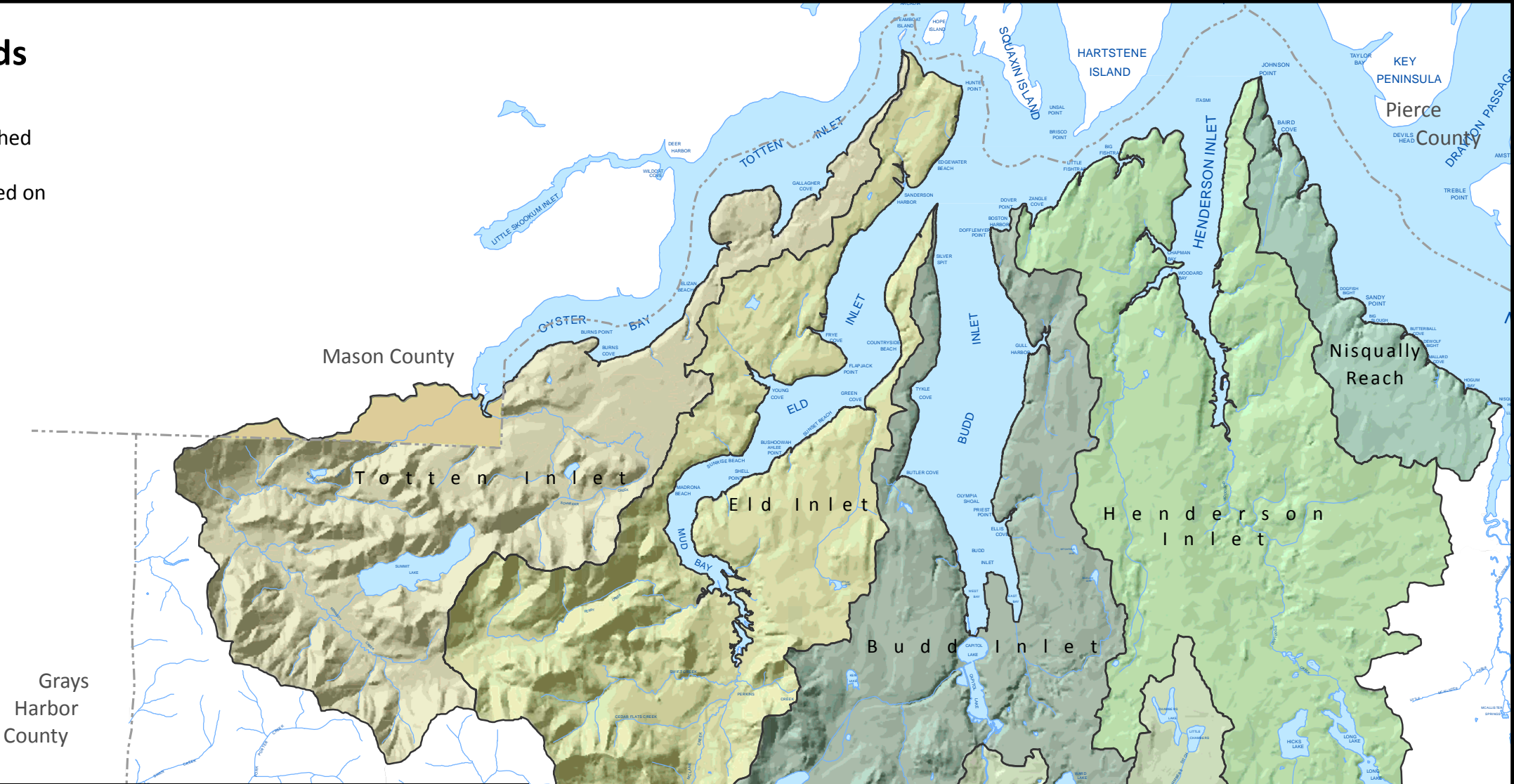
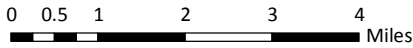
SOURCE: Watersheds are aggregations of Puget Sound Watershed Characterization analysis units (Map 3).  
 NOTE: Deschutes watershed is broken into three sections based on Raines (2007)

Watershed:

- Budd Inlet
- Eld Inlet
- Henderson Inlet
- Nisqually Reach
- Totten Inlet

Deschutes River Watershed:

- Lower Sub-basin
- Middle Sub-basin
- Mountain Sub-basin



**DISCLAIMER:**  
 This map is for general planning purposes only. Thurston Regional Planning Council makes no representations as to accuracy or fitness of the information for a particular purpose.

This project has been funded wholly or in part by the United States Environmental Protection Agency under assistance agreement (PO-00J12401-0) to Thurston County. The contents of this document do not necessarily reflect the views and policies of the Environmental Protection Agency, nor does mention of trade names or commercial products constitute endorsement or recommendation for use.