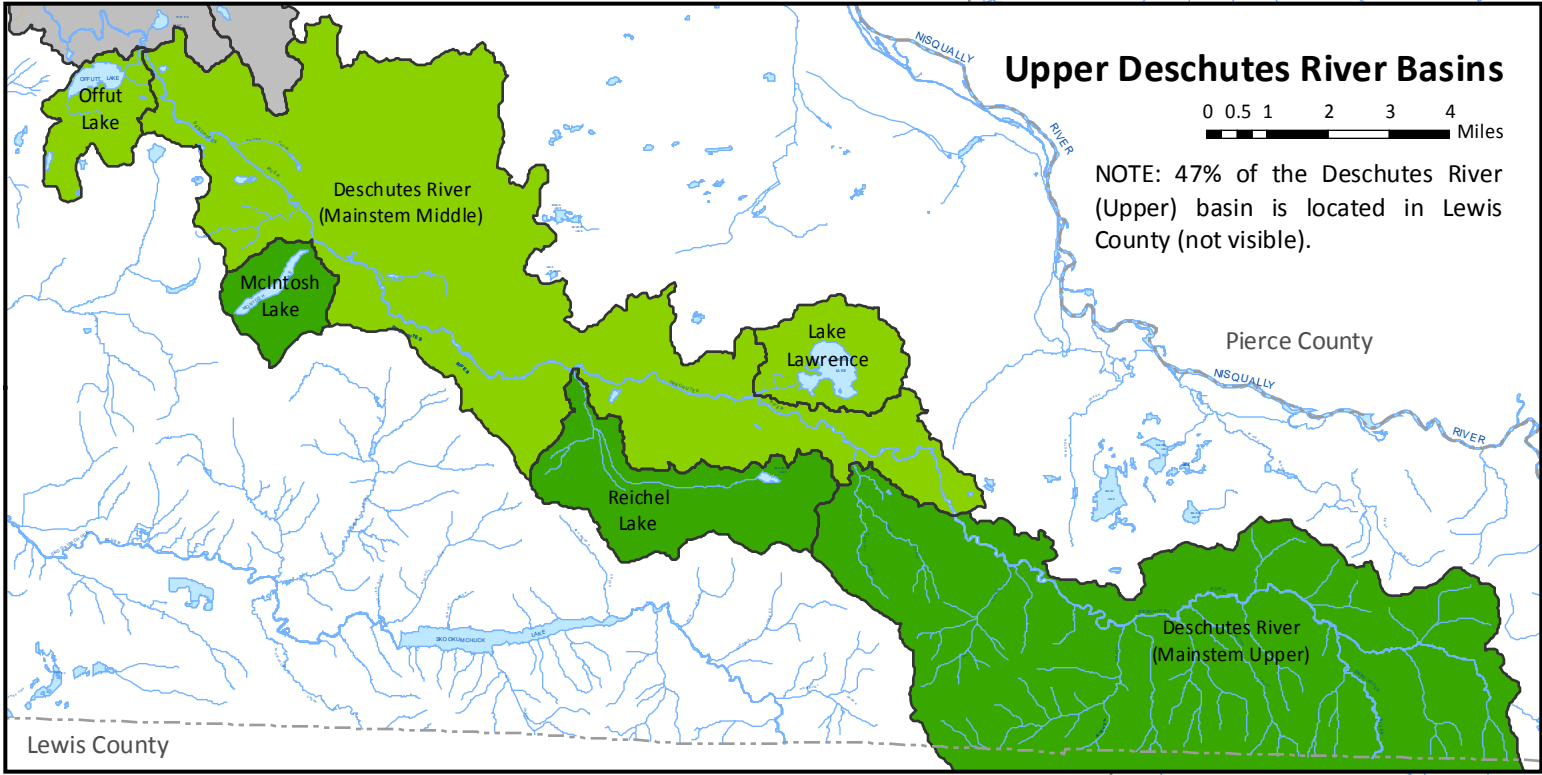
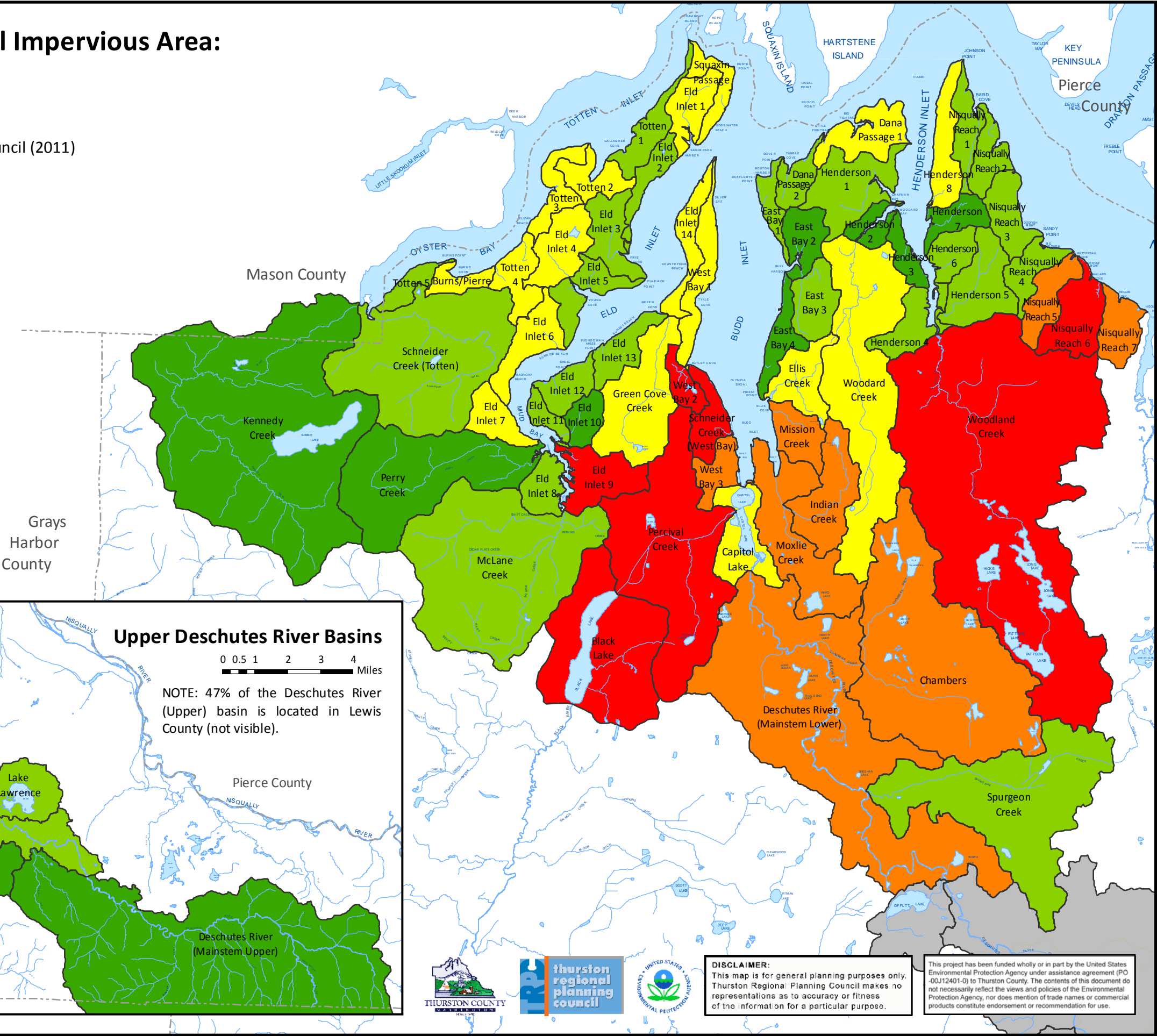
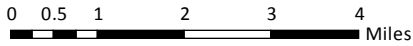


Map 10: Estimated Increase in Total Impervious Area: 2006 to Buildout In WRIs 13 & 14

SOURCE: Thurston County and Thurston Regional Planning Council (2011)

- Category:
- 1: Less than 0.5 percent increase
 - 2: 0.5 to 1 percent increase
 - 3: 1 - 3 percent increase
 - 4: 3 - 5 percent increase
 - 5: More than 5 percent increase



DISCLAIMER:
This map is for general planning purposes only. Thurston Regional Planning Council makes no representations as to accuracy or fitness of the information for a particular purpose.

This project has been funded wholly or in part by the United States Environmental Protection Agency under assistance agreement (PO-00J12401-0) to Thurston County. The contents of this document do not necessarily reflect the views and policies of the Environmental Protection Agency, nor does mention of trade names or commercial products constitute endorsement or recommendation for use.