



Thurston County Government

Shoreline Master Program

Updates on Recent SMP Work Sessions

Andrew Deffobis, Interim Senior Planner

6 April 2022



Overview



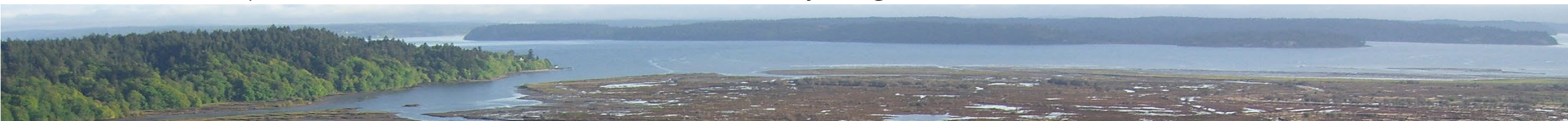
- Planning Commission has been reviewing public comments re: select shoreline environment designations
- PC may revise proposed SEDs consistent with designation criteria
- PC asked for more information on two shoreline reaches



Shoreline Environment Designations Background



- All jurisdictions must assign SEDs to shoreline; process is informed by Inventory & Characterization
- SEDs control allowed uses, permit and development standards
- SED report created earlier in SMP update process
 - Natural SED proposed for more intact shorelines
 - Shoreline Residential SED proposed for more impacted shorelines
 - Rural Conservancy/Urban Conservancy SED proposed for other shorelines
 - Aquatic SED used below the Ordinary High Water Mark (OHWM)





Please keep in mind...

- Analyses are based on criteria in SED report
- Reaches may not fit neatly in one SED box; may meet criteria of more than one SED
- Approach is consistent with past project phase, but resources are limited
- SEDs are one component to ensure no net loss of ecological function
- SMP jurisdiction is confirmed in the field
- Other factors besides SED will affect shoreline development



Long Lake - Carpenter Park



- PC recommended Rural Conservancy SED after reviewing public comments
 - Parcel is in Lacey UGA; staff reviewed Urban Conservancy criteria
- Staff propose Urban Conservancy SED for this parcel:
 - In a UGA, planned for development, compatible with maintaining/restoring ecological function. Retains function though partially developed, potential for ecological restoration.



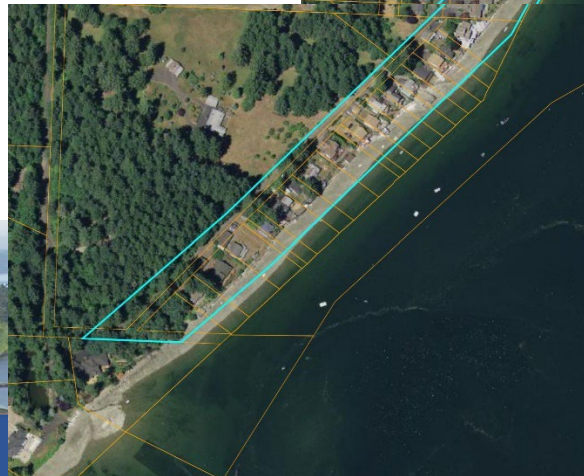
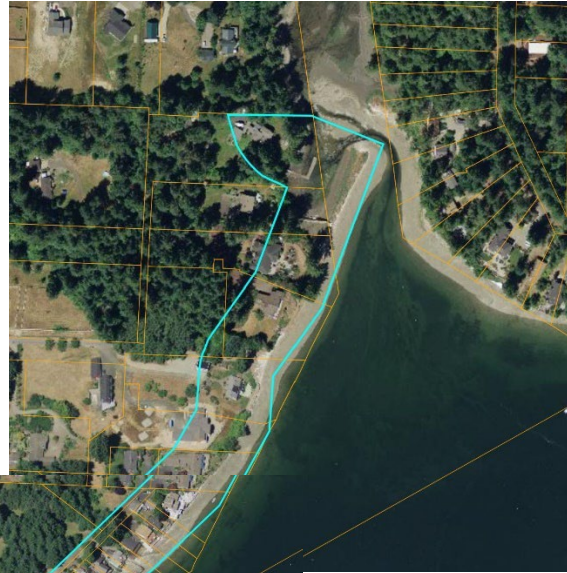
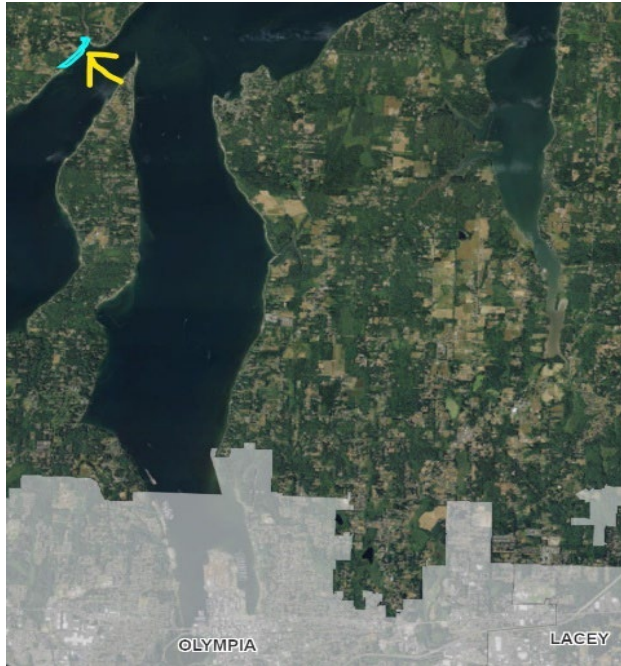
Long Lake – Carpenter Park



- Questions?



Eld Inlet (MEL-02—MEL-03)



- Current SED: Rural (Conservancy at north end of reach)
- Proposed SED: Shoreline Residential
- Requested SED: Rural Conservancy (for spit and ¼ mile south)



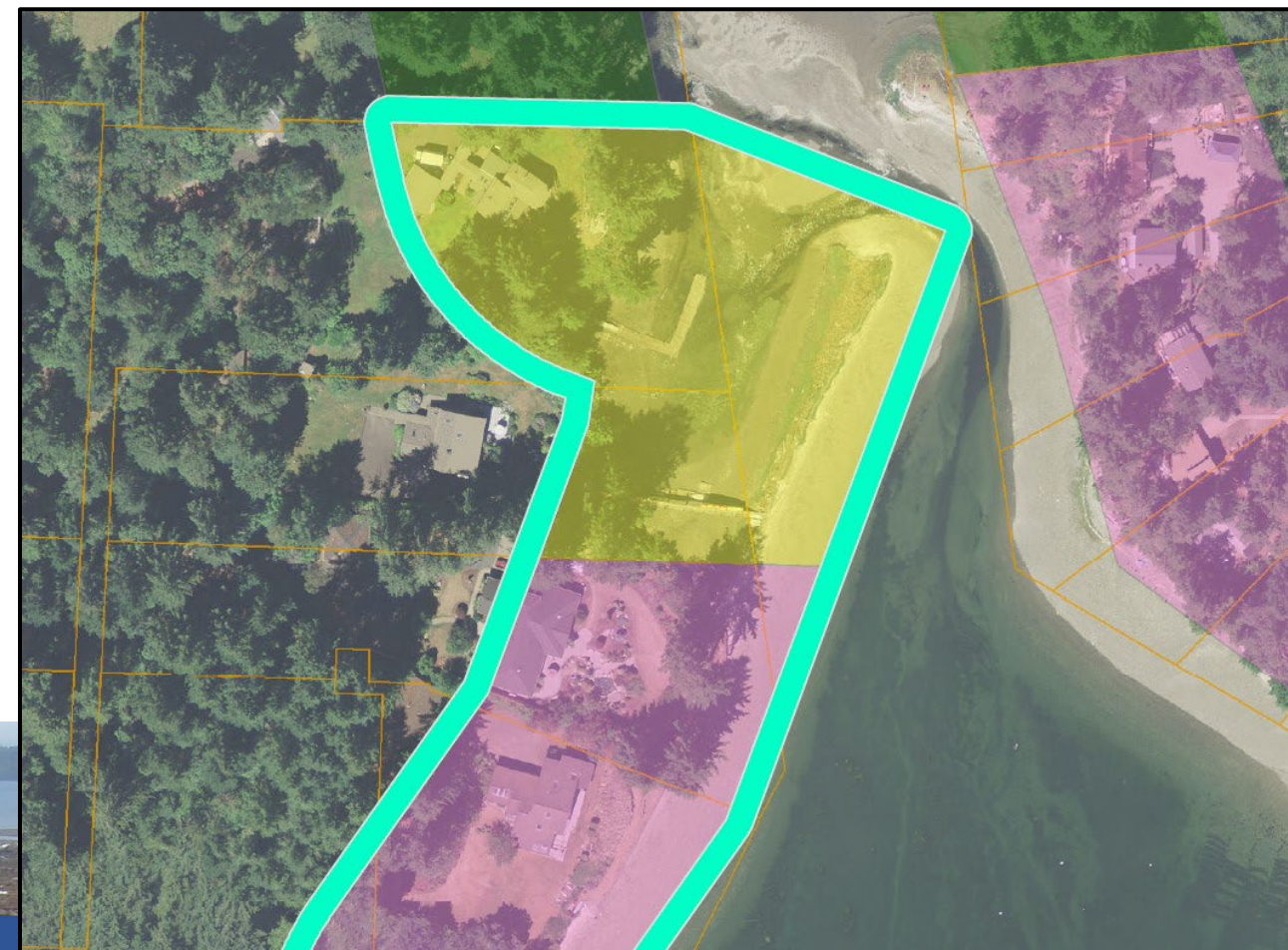
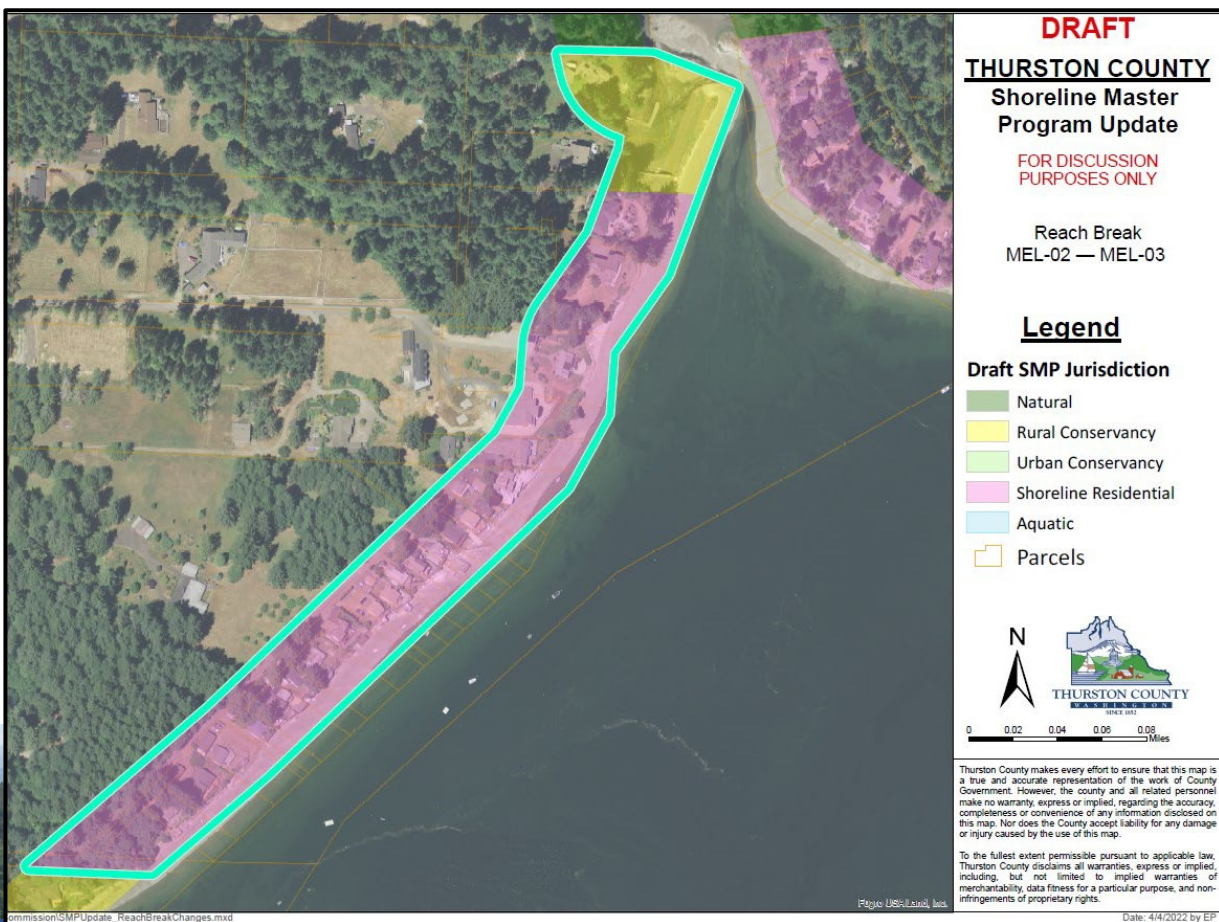


Eld Inlet (MEL-02—MEL-03)

- PC asked staff to explore Rural Conservancy SED in area of sand spit; return with map
- Upon review, not difficult to apply Rural Conservancy for area currently designated Conservancy (sand spit and 2 residential parcels)
 - Homes set back further than many other parcels; spit/lagoon used for boating and public access



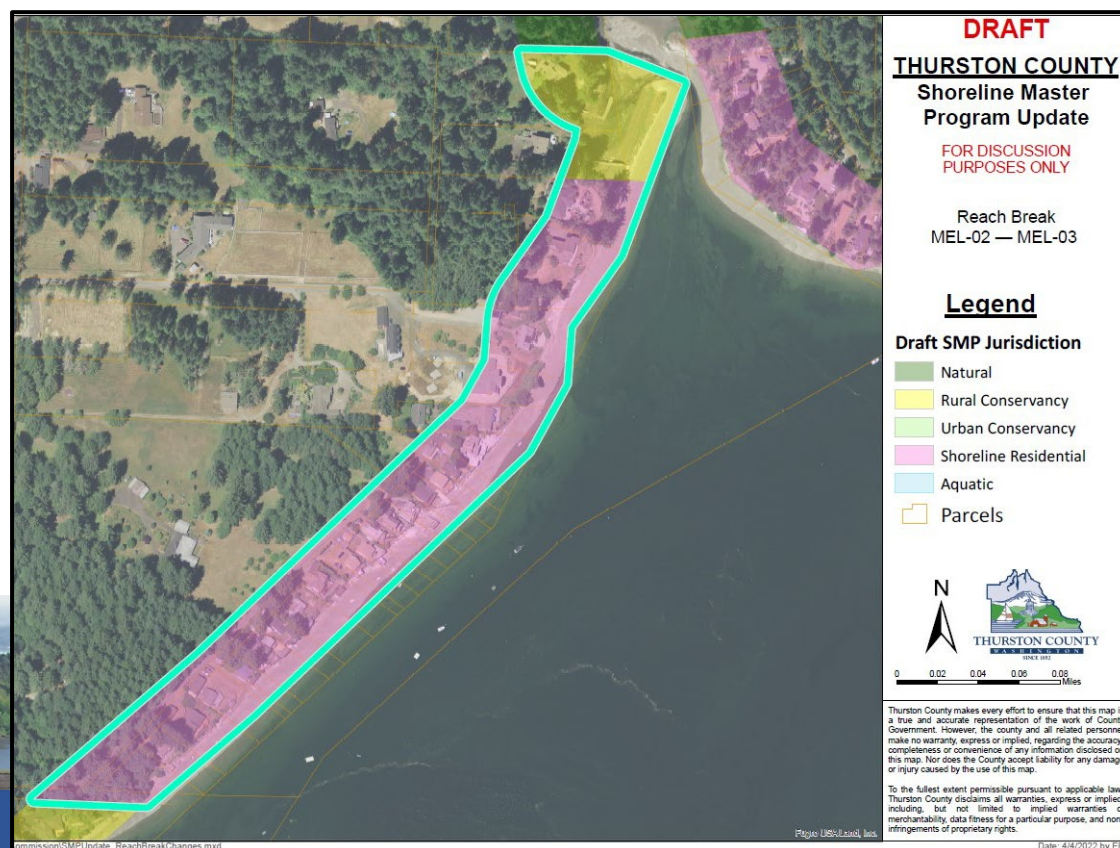
Reach MEL-02-03 – New Proposed SEDs



Question for Planning Commission



- Does proposed map amendment capture PC recommendation?





Planning Commission Discussion

Next Steps: Review additional SEDs from public comments
 Wrap up any remaining items
 Prepare SMP Recommendation to BOCC

