

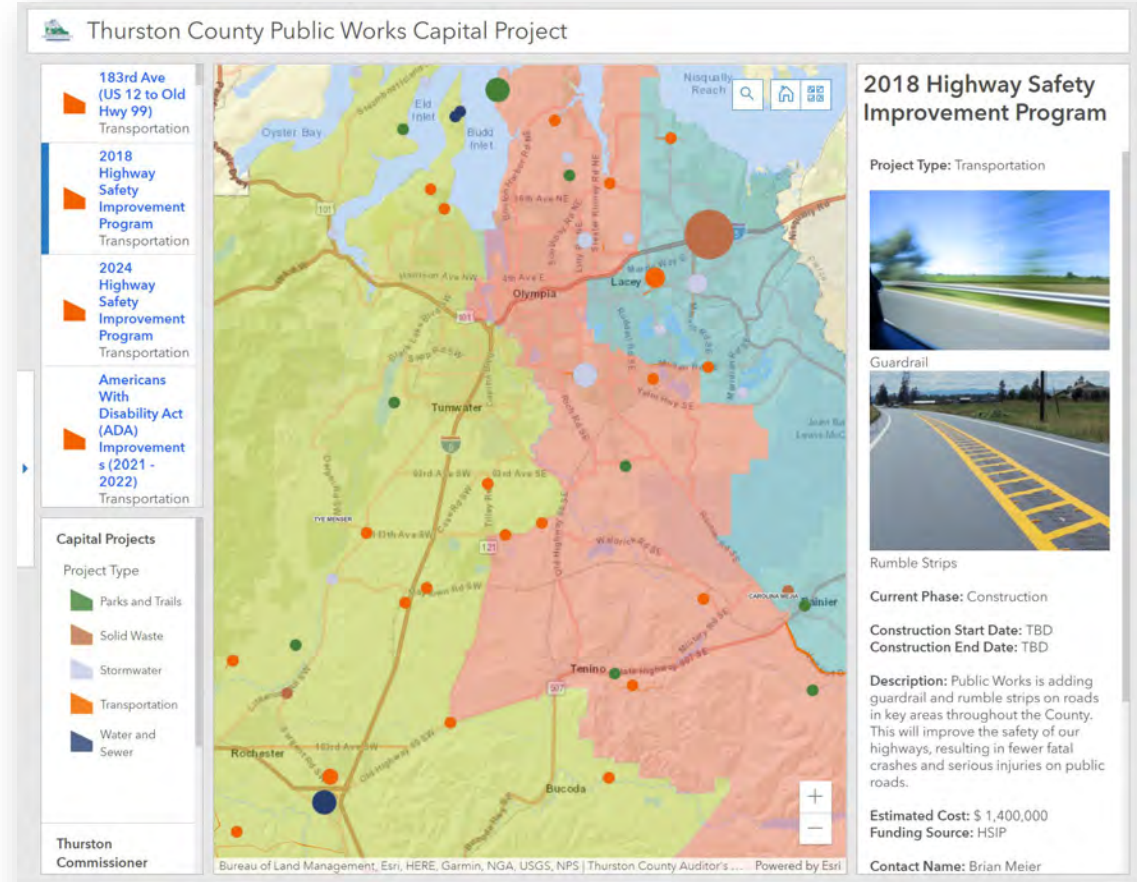
Public Works Capital Projects Dashboard

Storm & Surface Water Advisory Board Presentation



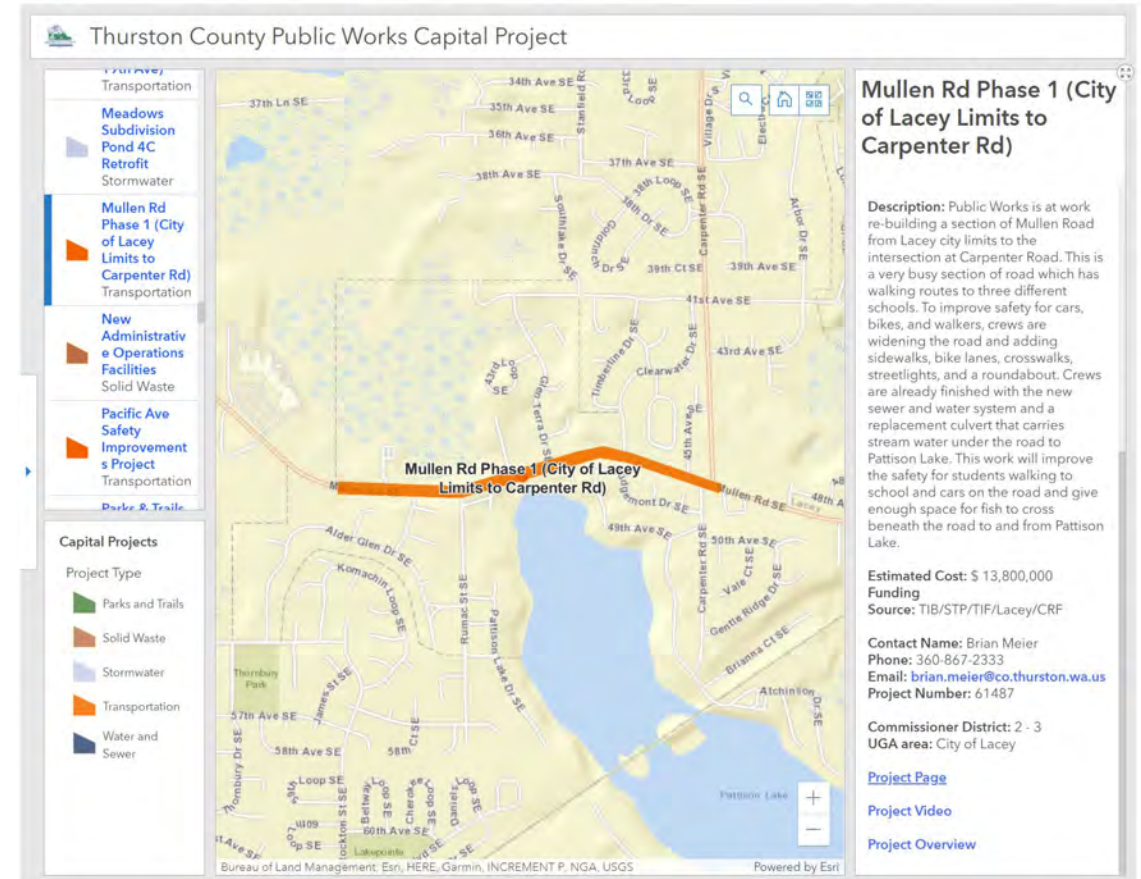
What is the dashboard?

- Online map with information about Public Works capital projects
- Launched June 14, 2021
- Accessible on county website
- Searchable by project type, UGA, commissioner district and funding source.



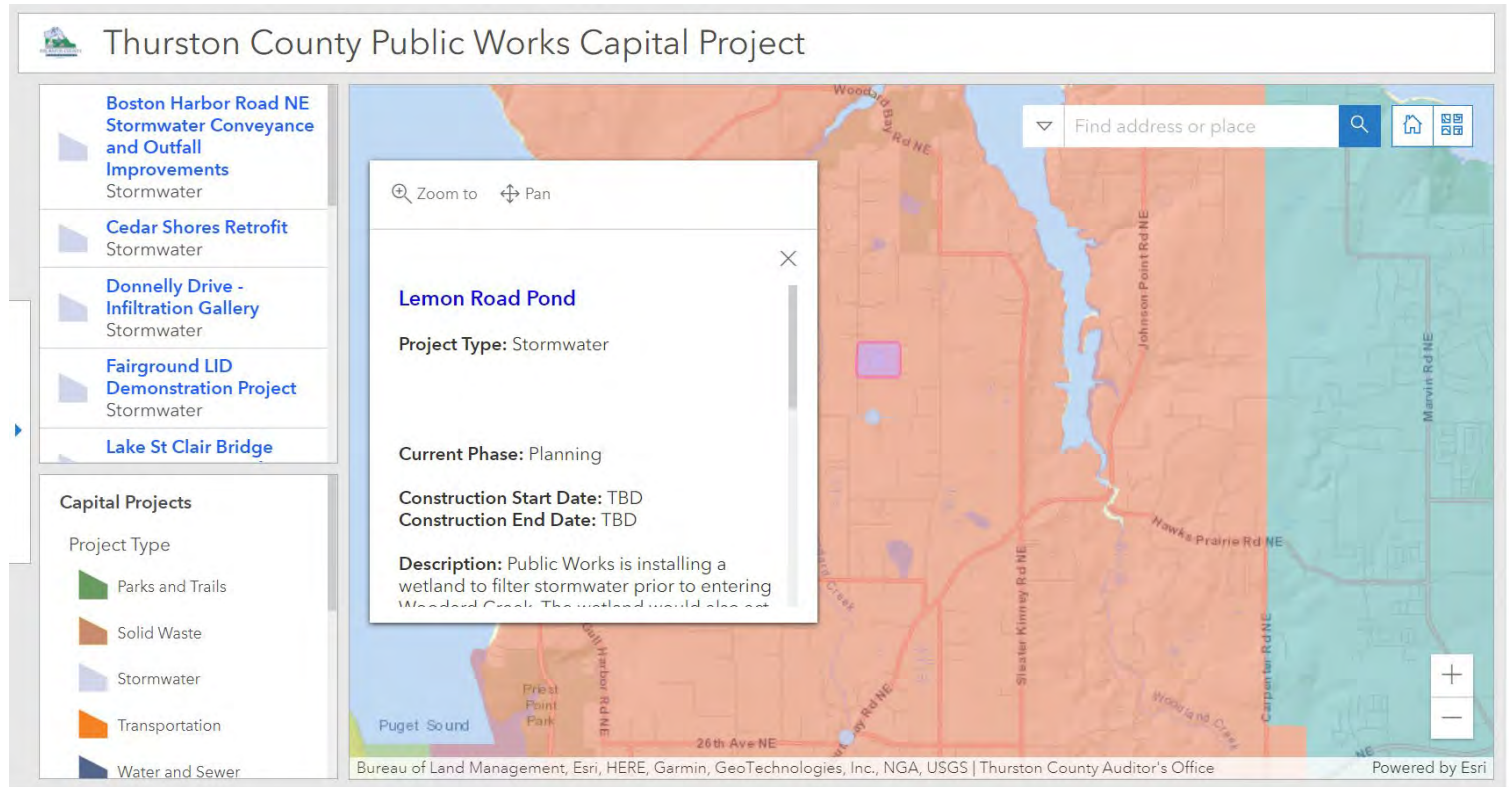
What project information in the dashboard?

- Name
- Location
- Description
- Current phase
- Estimated cost
- Construction dates
- Links for posting environmental studies, right of way info, etc.
- Projects nearing construction have images and more detailed information (i.e. photos)
- Unknowns are listed as “TBD”



What outreach goals does it accomplish?

- Allows us to increase our capacity for outreach efforts
- Gives the public more comprehensive online information about projects
- Lays a foundation for future mapping tools



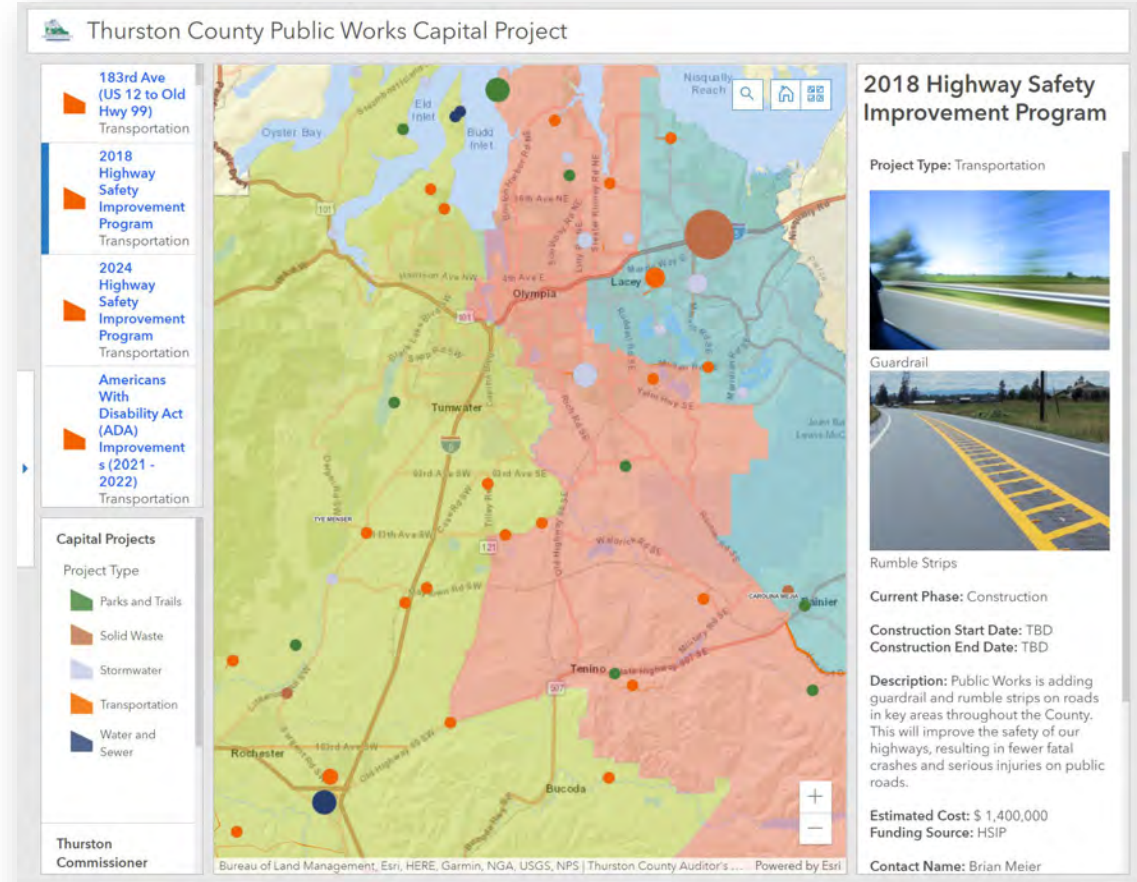
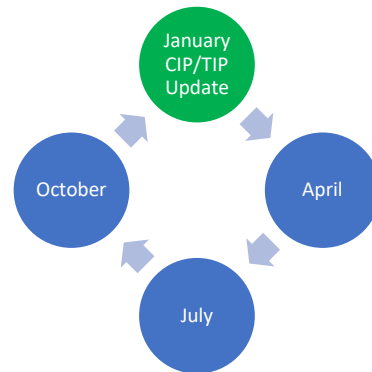
How and when is the dashboard updated?

PW Outreach Team – Ongoing

- Images
- Links
- Descriptions

Project Managers – Quarterly

- Project Number
- Project Phase
- Construction Dates
- Contact Info
- Funding Source(s)



How many people use the dashboard?

- Average Views 1k Monthly



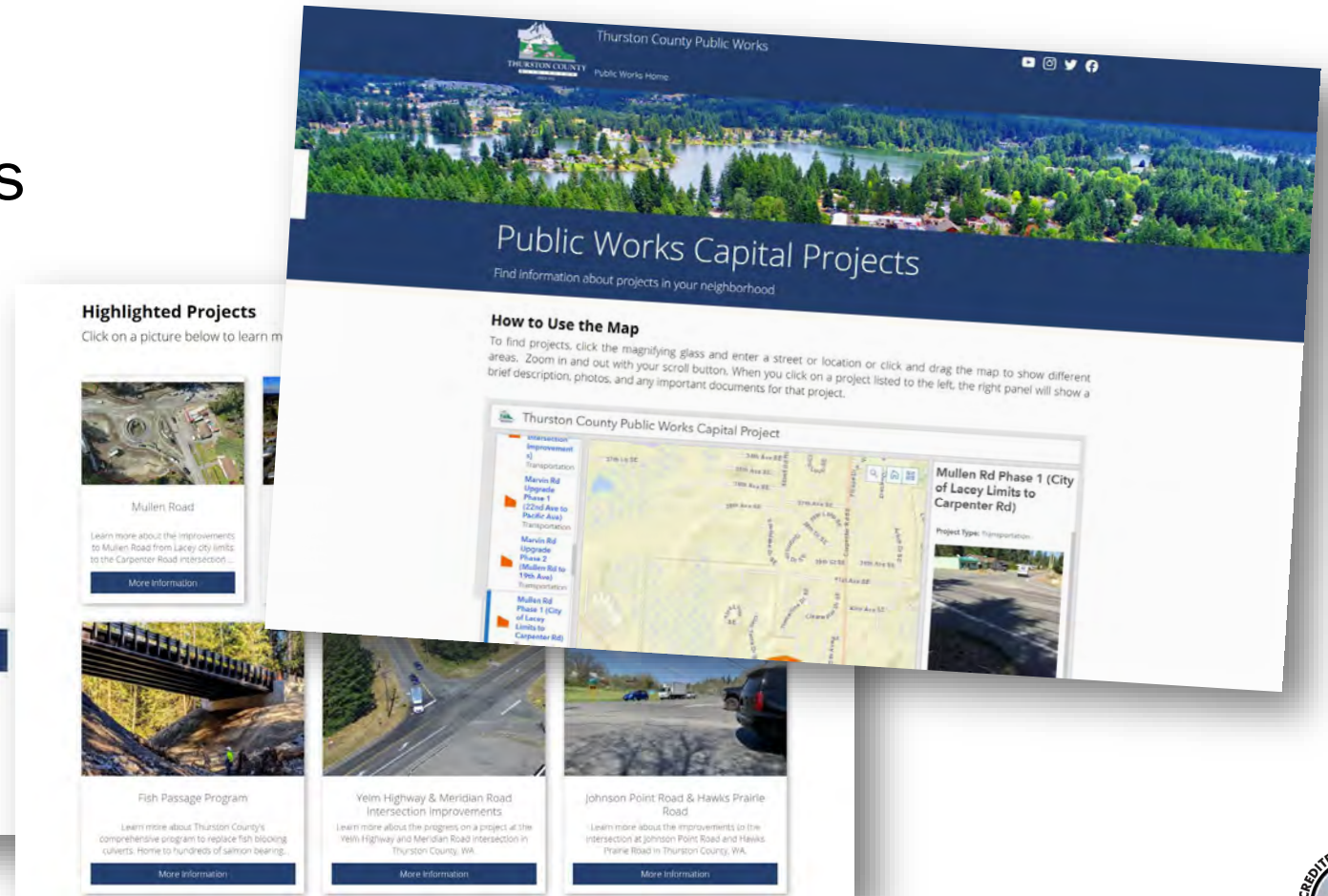
Public Works Projects Web Section

- Projects Hub
- Highlighted Projects Pages
 - More outreach tools
 - Multiple languages
 - Maps

Mullen Road Updates

Please write your email to be added to the update list.*

Submit



Thank you!

