



Board of County Commissioners  
Board Work Session  
Regular Meeting  
Wednesday, March 29, 2023  
9:00am to 10:00am  
3000 Pacific Avenue SE, Room 110

*For public virtual attendance, you may follow along on the [Thurston County YouTube Channel](#).*

## **AGENDA**

### **I. Timberland Regional Library Annual Update – *Informational***

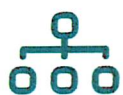
Disability Accommodations: Room 110 is equipped with an assistive listening system and is wheelchair accessible. To request disability accommodations, call the Reasonable Accommodation Coordinator at least 3 days prior to the meeting at 360-786-5440. Persons with speech or hearing disabilities may call via Washington Relay at 711 or 800-833-6388.



Photo Credit: City of Olympia

Timberland Regional **LIBRARY**





## LOCAL COMMUNITIES

- Sharing local culture.
- Increasing our presence in under-served communities.
- Creating opportunities for inter-generational connection.



## EQUITY, DIVERSITY, AND INCLUSION

- Reaching those with disabilities and other access barriers.
- Reflecting under-represented groups in our collections, staff, and services.
- Partnering with local agencies and organizations to support diverse communities.



## CHILDREN FROM BIRTH TO FIVE

- Providing appealing spaces and engaging experiences.
- Clarifying what they need and how to provide for those needs.
- Empowering them to build relationships with the library & within their communities.



# 2020-2024 STRATEGIC DIRECTION

The Timberland Regional Library Strategic Direction for 2020-2024 was developed through community and staff participation with our Board of Trustees strategic planning committee.

We appreciate the time and effort that was given to understand the needs within the community, identify areas of focus that we assist with, and then align our resources to create positive change in those areas.



## MISSION

**Welcoming everyone to a vibrant world of possibilities.  
Connecting people, places, and ideas.  
Evolving to meet the needs of our communities.**



## VISION

**Libraries connecting to our communities.**



## WE VALUE

**Access for all. Working together. Diverse communities and ideas.  
Responsible use of public resources.**



### BORROW

Assistive Devices  
eBooks and Books  
Movies  
Audiobooks



### PARTICIPATE

Storytimes  
Book Groups  
Arts & Crafts  
Meeting Space



### DISCOVER

Legal Forms  
Auto Repair  
Homework Help  
History & Genealogy

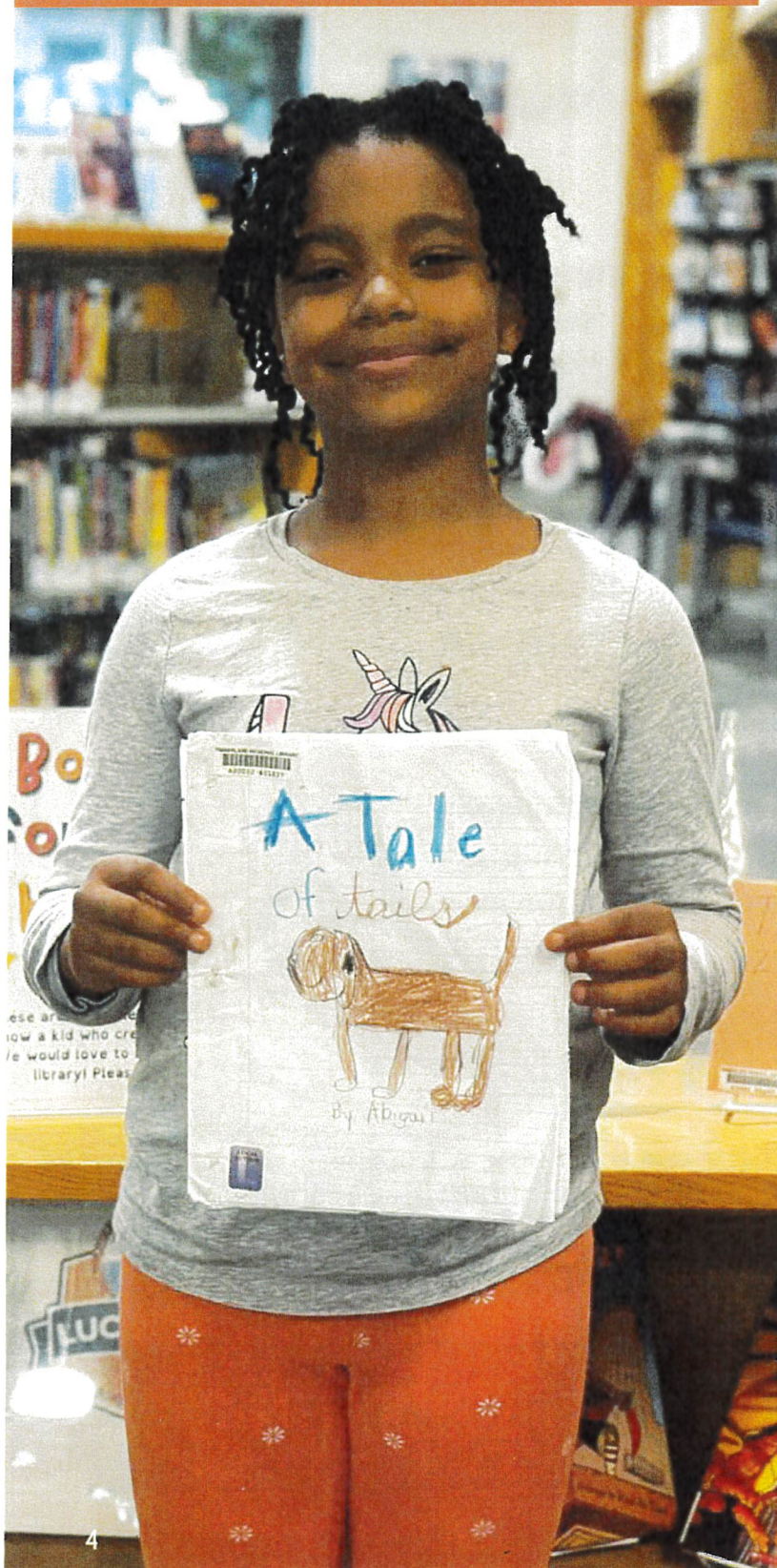


### CONNECT

Wifi  
Printing  
Computers  
Job Search



In August of 2022, a 9 year old patron and author named Abigail had recently finished her own book titled, "A Tale of Tails", a book that combined her love of both dogs and science. When Abigail was visiting the library, she suggested to Public Services Specialist Meghan Hall, "Maybe you could have my book at the library so other kids could enjoy it", and thus the idea for the Books for Kids by Kids collection was born!



Physical Checkouts .....	2,631,222
OverDrive Total.....	1,398,045
OverDrive Magazines.....	44,807
Kanopy.....	75,205

**Total Circulation ..... 4,284,294**

*\*OverDrive Magazine total included in the OverDrive Total*

Physical Collection Total.....	761,927
New items/Orders .....	109,397
Processed Items .....	112,845

PC Print Jobs .....	490,962
Sheets of Paper Used .....	1,900,479

New Patrons .....	53,408
New OverDrive Patrons.....	12,001
Active Patrons .....	134,065
Total Patrons .....	331,099



**AskLib**  
3,443 emails

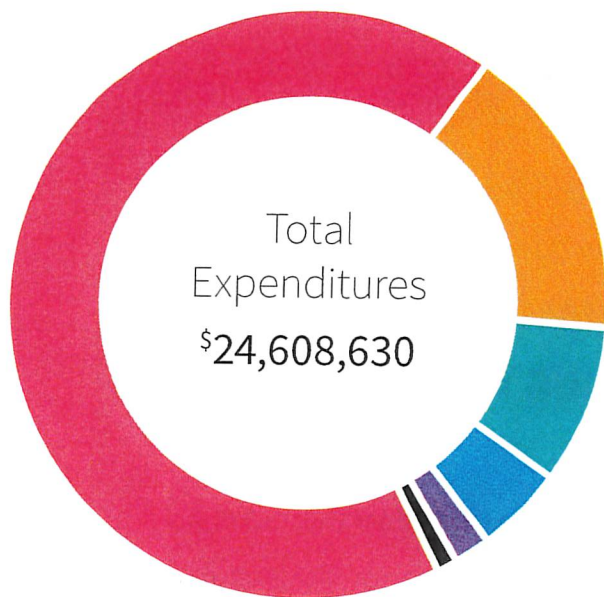


**Live Chat**  
7,042 Chats



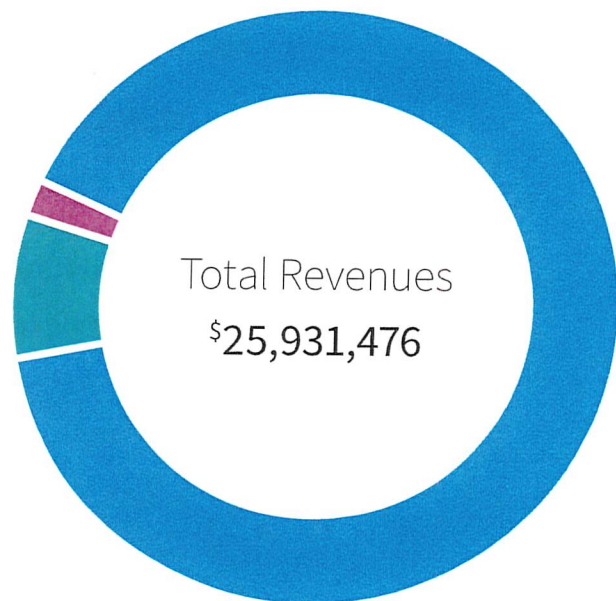
**Grab Bags**  
239 Bags





67.4%	Salaries & Benefits	\$16,582,420
16.3%	Books & Materials	\$4,017,708
8.7%	Other	\$2,133,667
4.8%	Professional Services	\$1,184,773
1.89%	Supplies	\$464,351
.9%	Capital Expenditures	\$225,711

\$23,470,510	Property Taxes	90.5%
\$1,996,180	Timber	7.7%
\$464,786	Other	1.8%



## Turnaround Time for New Collection Items

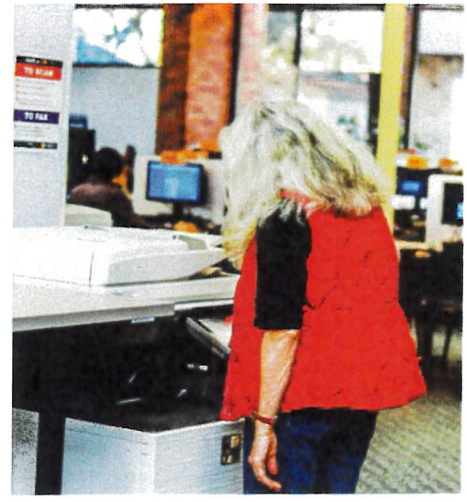




# NEW OPEN HOURS







Locations with hours changes:

**Grays Harbor County:**

Elma, McCleary, and Montesano

**Lewis County:**

Centralia, Chehalis, Mountain View (Randle),  
Packwood, and Salkum

**Mason County:**

Hoodsport, North Mason (Belfair), and Shelton

**Pacific County:**

Ocean Park and South Bend

**Thurston County:**

Lacey and West Olympia

**12.7%** INCREASE  
IN HOURS



**ON MAY 1,  
WEST OLYMPIA  
LIBRARY OPENED  
ON SUNDAYS!**





**482** EAH CARD HOLDERS

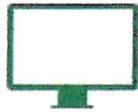
**76** PATRONS WITH OTHER  
HOME LIBRARIES

**5** LOCATIONS



# EXPANDED ACCESS HOURS

HOODSPORT • MCCLEARY • NASELLE • OCEAN PARK  
PACKWOOD

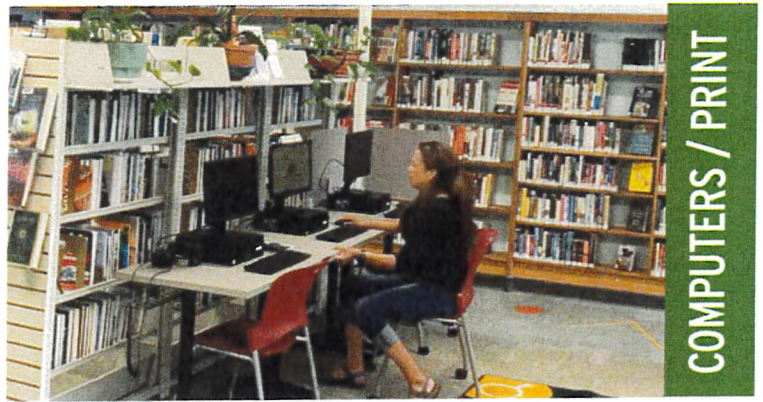


## Library Services on Your Schedule

Daily from 7 am until the library opens and after the library closes until 8 pm

Available at select locations

# EXPANDED access









# NEW LOCATION OPENS: HAWKS PRAIRIE

GRAND OPENING: FRIDAY, FEBRUARY 18, 2022



The Hawks Prairie Lucky Day Library, the second of its kind for Timberland Regional Library, offers the

- Newest and most in-demand books and movies
- Modern layout
- 3-year pilot project
- Wifi
- Computers
- Printing/Scanning/Faxing Services







UPSTAIRS



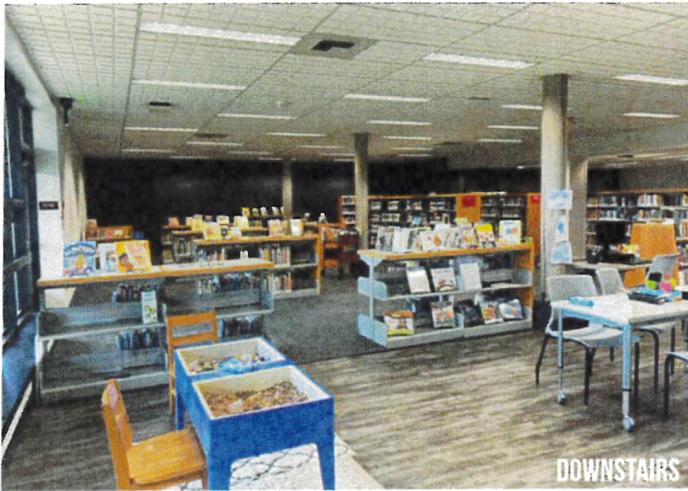
CHILDREN'S AREA



# SHELTON GRAND OPENING

## SHELTON'S GRAND OPENING, JUNE 10

About 25 people, including Mayor Onisko, members of Shelton's City Council, members of Shelton's Chamber of Commerce, Shelton City staff and Shelton library staff attended Shelton's Grand Opening, with a ribbon-cutting ceremony hosted by the Chamber of Commerce. TRL President Oliver and Trustee Sebby shared comments, and Trustee Harrington attended as well.



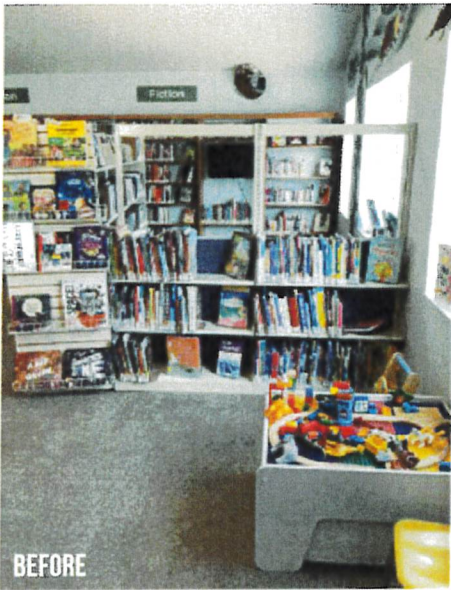


# NEW LIBRARY IN PROGRESS

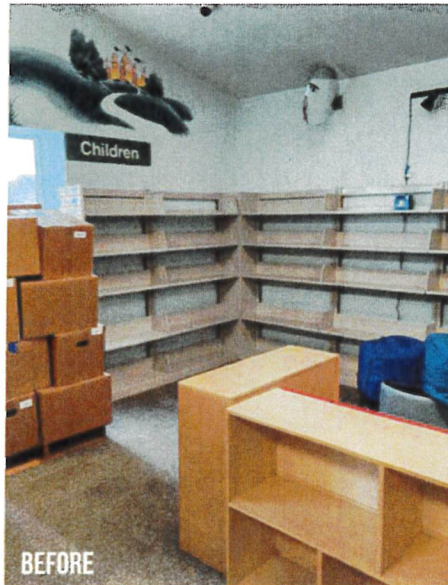
## NEW MOUNTAIN VIEW LOCATION







BEFORE



BEFORE

# MCCLEARY

## MCCLEARY REFRESH

McCleary closed at the end of October, and will reopen early February 2023 with NEW:

- Lighting and Cabinetry
- Paint and Flooring
- Library Manager Office
- Furniture and Shelving



DURING



BEFORE



BEFORE



DURING



DURING



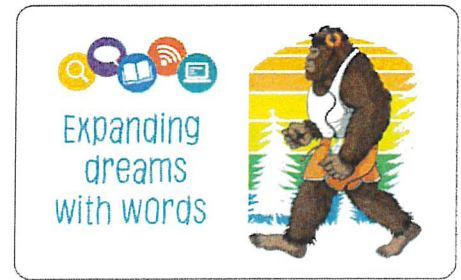
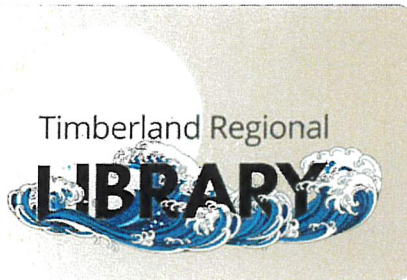
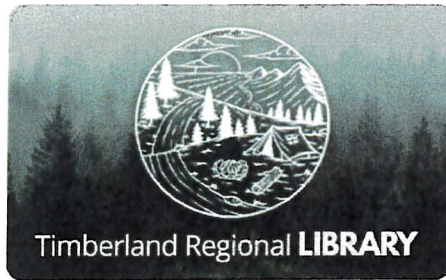




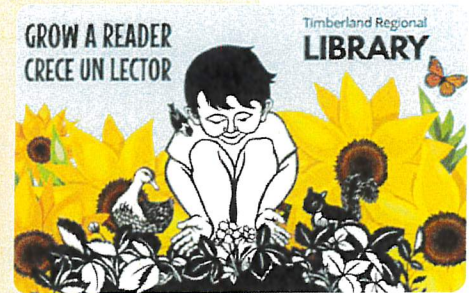
# NEW LIBRARY CARDS

SEPTEMBER IS LIBRARY CARD SIGN UP MONTH

**5,423** NEW CARDS ISSUED  
IN SEPTEMBER



Nikki McClure, a local artist and children's book author, teamed up to create an early learning reading engagement activity, Grow a Reader, with a matching library card; and a beautiful keepsake piece containing Nikki's artwork.



**Ovil Mailhot**

**We are honored to present the first Native American Heritage Month Timberland Regional Library card!**

I am Coast Salish (Sto:lo and Nlaka'pamux Nations) graphic artist and designer originally from Seabird Island Reserve in British Columbia.





**9,603** ATTENDED  
PROGRAMS

**652** PROGRAMS

**11,109** BOOKS  
DISTRIBUTED

**15** STORYTRAILS





# SUMMER LIBRARY PROGRAM

JUNE 1 TO AUGUST 30

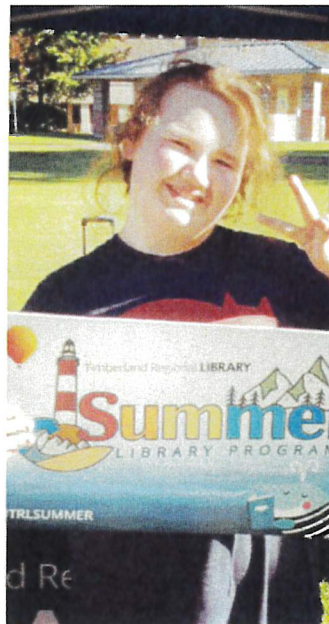


Photo Credit: Jason Masters



## MATH BACKPACKS

TRL developed STEM Backpacks from a \$7,500 grant awarded by Capital STEM Alliance. The goal is to provide caregivers in rural and under-served communities the resources to support their children's (ages 3-6) early math development.

Backpacks are designed based on six early learning math themes: Patterns, Measurement, Counting, Addition & Subtraction, and Shapes. Picture books and activity sheets will be included.





# LIBRARY OF THINGS

NEW: MATH BACKPACKS, IPADS, KITCHEN TOOLS,  
PLANKTON KITS, FISHING KITS, AND  
CHECKOUT WASHINGTON KITS

**922** KITS  
CHECKED OUT





# FRIENDS OF THE LIBRARY



NATIONAL FRIENDS OF THE LIBRARY WEEK, OCTOBER 16–22





**\$5,133** DONATED

## LIBRARY GIVING DAY

APRIL 6 ONE DAY ANNUAL EVENT

### Library Giving Day

One-day online fundraising event will occur on April 6 and will help us strengthen our community and transform lives every day.





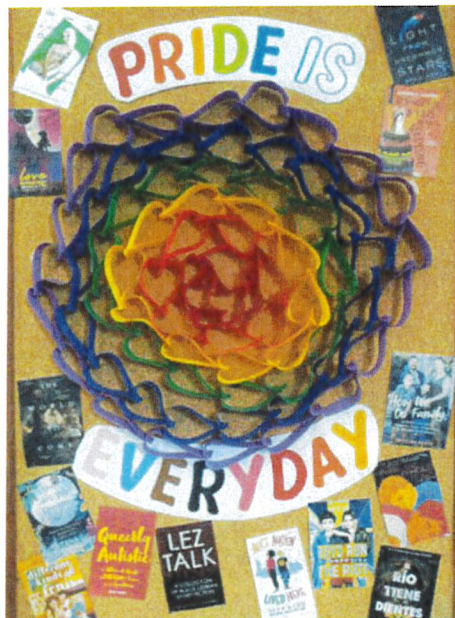


## THURSTON COUNTY COUNCIL ON RACIAL EQUITY AND INCLUSION

Thank you, Commissioners, for appointing Juliet Lawson Hall, TRL's District Manager for Equity, Diversity and Inclusion to serve on the first ever Thurston County Council on Racial Equity and Inclusion. Juliet holds one of the 7 spots on the Council. The Council will expand to 15 members over the next three years. The purpose of the Council is to advise and engage the Board of County Commissioners, the Board of Health, and elected and appointed officials, on matters of racial equity and inclusion within all county services and the policies, processes, and practices used to accomplish the mission of Thurston County government. Juliet was selected by her peers to lead this Council.



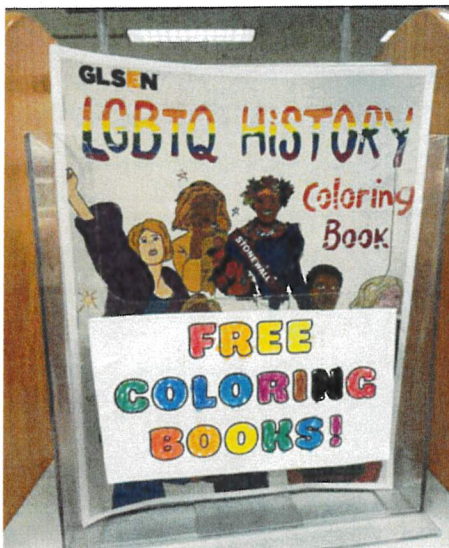




# CELEBRATIONS

#TRLCELEBRATIONS

TRL.ORG/CELEBRATIONS





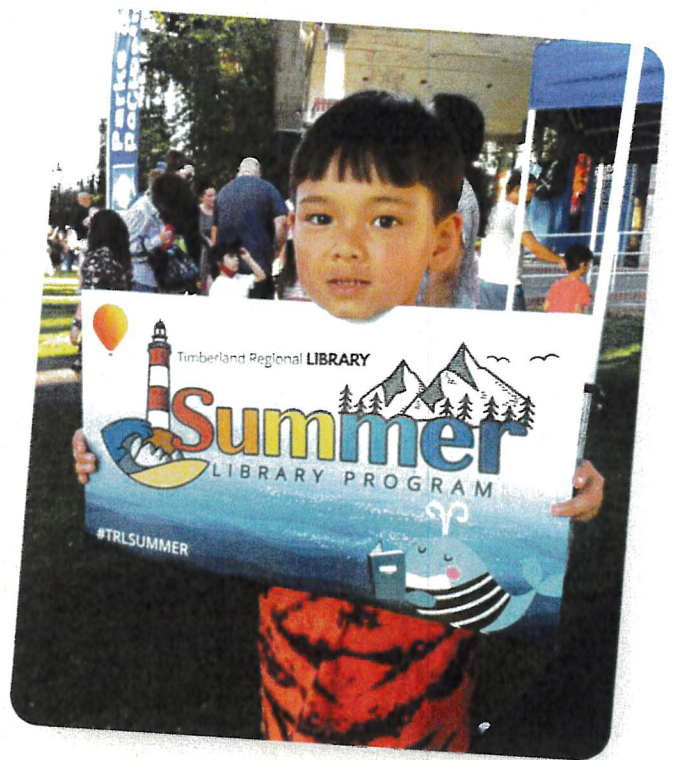






# #1 feedback from community members across 7,000 sq. miles

“We love living here. We are raising our children here, and we want them to stay here when they grow up, and we want them to have family wage jobs.”







## LA HORA BILINGUE BILINGUAL TIME

Join our expert StoryTime providers, and other families live on Zoom for songs, music, movement, books, and activities for the whole family in Spanish and English.

Acompáñanos en vivo por Zoom para canciones, rimas y movimientos en inglés y español para las edades de 0-5.

Join us live on Zoom for songs, rhymes, and movement in Spanish and English for ages 0 - 5.



During the Latinx Youth Summit (LYS), Latinx high school students from Thurston, Mason, Lewis, Pacific and Grays Harbor counties have an opportunity to learn about post-secondary education pathways, celebrate their multi-cultural heritage and focus on their future, said Betsy Storey, public services specialist at Olympia Timberland Library.

"This vital and unique community event affords students in TRL's five-county district access to the tools they need to build the bridge from high school to college and beyond," Storey said.

The event is rich with knowledge and inspiration for students.

This is the 20th year for the Latinx Youth Summit (LYS), and Timberland Regional Library (TRL) has supported the event for 19 years.





## Veterans Connection Café

TRL partnered with WestCare Foundation, the Aberdeen and Lacey American Legions, Lacey Veterans Service Center, and VA American Lake to offer this innovative community program.

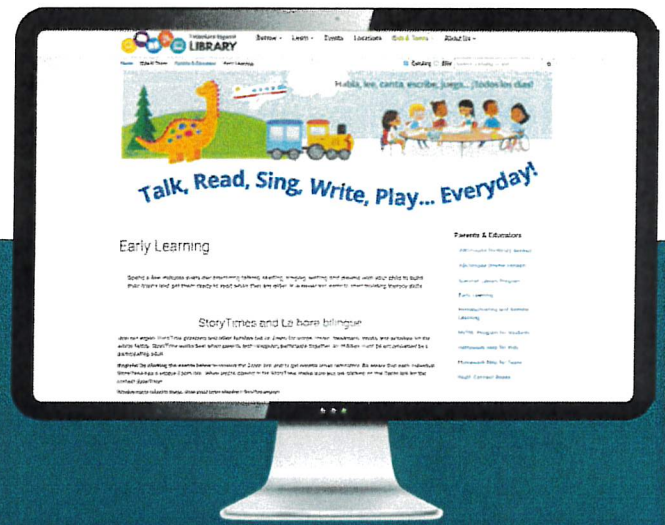
Connection Sites:

**Westport**

**NEW**

Mountain View

Veterans, their spouses, and family members can set up appointments to receive professional assistance with healthcare, pensions, lawyers, and other Veterans' benefits.



## Refreshed Early Learning Website

TRL recently redesigned our Early Learning webpage into a comprehensive library resource center for caregivers and early childhood educators. The goal was to create one location for all of TRL's resources to support early childhood development and learning.

**TRL.ORG/EARLY-LEARNING**



## Launch Grow A Reader Keepsake

Keep track of the reading journey you and your child embark on with Grow A Reader.

Copies available in English and Spanish at all locations.







# MESSAGE FROM EXECUTIVE DIRECTOR

Welcome to the 2022 Annual Report showcasing many initiatives put forth by our 255 talented staff!

2022 marked new library open hours at the 29 libraries, a return to in person Summer Library programs, and in the fall, in person story-times. Additional services created during the 2020 pandemic such as Zoom bilingual story-times and take and makes continued to be offered in 2022.

TRL remained flexible, nimble and responsive during 2022. Here are additional highlights:

**Opening of TRL's 29th library** – Hawks Prairie Timberland Library, a Lucky Day Demonstration library, with a 3-year lease, at 8205 Martin Way.

New – **Grow a Reader early literacy activity** for ages birth to 6 and their caregivers.

New – **iPads to checkout for in library use.**

New - **Library of Things expanded** to include new stargazing kits, kitchen tools, plankton kits, and early math backpacks. Added additional fishing kits and “check out Washington” kits.

Celebrating TRL's **Friends of the Library groups** during the 17th National Friends of the Library Week, October 16-22.

**Expanded Access Hours** program for patrons over 18 years of age who want to access the library outside of standard operating hours without staff expanded to Naselle, Hoodspoint, Ocean Park, Packwood and McCleary libraries; daily 7 a.m. – 8 p.m.

**Shelton Timberland Library Major Refresh** – new paint, flooring, furniture, layout.

**Exterior Refreshes:** Amanda Park, Ocean Park and Salkum libraries.

**Interior Refreshes:** Elma Library, Centralia Library Restroom; McCleary Library.

**Mountain View Timberland Library** – community engagement regarding new library design.

Board of Trustees approved an additional 2-year lease for the **West Olympia Timberland Library** – May 1, 2023 to April 30, 2025, same location, double the size. Financed by the City of Olympia.

**Expanded Story Trails** with new partners: Capital Land Trust, Onalaska Alliance, Lake Sylvia State Park, Carlisle Lake Park, Lacey Regional Athletic Complex (Lacey).

Thank you for your support,

Cheryl



# BOARD OF TRUSTEES

Read full article: *Dyson, Heather Leigh. "Timberland Regional Library Board Members Work Together in Service, Care and Commitment to Community." ThurstonTalk, July 22, 2022. [View on Web](#)*



**NICOLETTE OLIVER** | President/Member-at-Large | Thurston County  
Term expires: 12/2026

"I became involved with the TRL Board because I wanted to provide equitable access to library services for all students, regardless of their neighborhood, family's income, home language and other circumstances," says Nicolette, whose term ends December 2026. "Our public libraries are important places for lifelong learning, and I am very proud to be a part of the Board as we have opened new library branches, increased digital resources, expanded partnerships with local school districts, purchased books in diverse languages, and invested in mobile library services to better reach students and families throughout our rural district."



**MARY BETH HARRINGTON** | Thurston County | Term expires: 12/2023

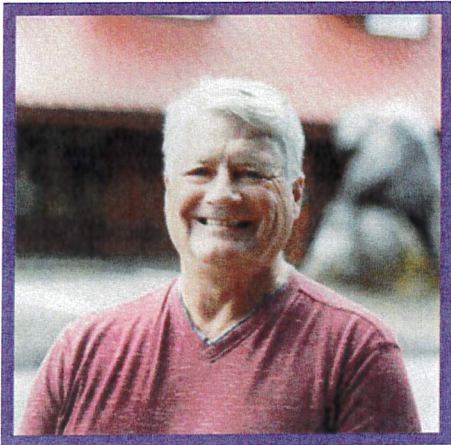
"I think what I like best is seeing firsthand the care and consideration that the staff give to every element of their job," Mary Beth says. "The people here are so lucky that the Timberland Regional Library is on the cutting edge of many new and innovative programs and services. I encourage everyone to take the time to learn more about their library and the critical role it plays in our community- it is far more than just books!"



**JASMINE DICKHOFF** | President Elect | Grays Harbor County  
Term expires: 12/2027

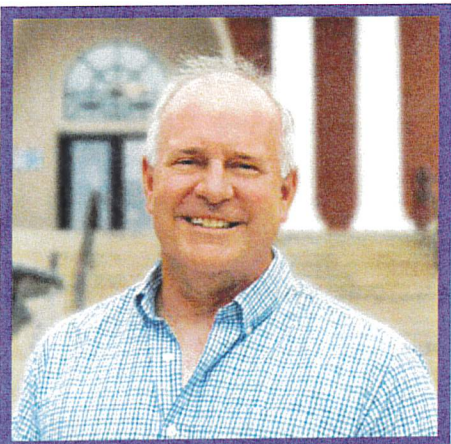
Jasmine has long been involved in community service and has sought to serve her neighbors throughout her life. She is the former mayor of Hoquiam as well as a former member of the Grays Harbor Transit Board of Directors. She also served on the Hoquiam City Council from 2007 until she was elected mayor in 2015. Jasmine joined the TRL Board in February 2021 and is eager to serve her term representing and supporting the TRL Board through 2027.





**HAL BLANTON** | Member-at-Large | Lewis County | Term expires: 12/2025

When asked to join the TRL Board, he saw it as an opportunity to serve the community and support the library's efforts. "I like being able to serve in an important organization that brings a vital service to our counties, and serve the patrons and taxpayers of the counties in a fiduciary relationship," says Hal, a previous board member. "I believe the staff of TRL works hard to bring great library services to our five counties."



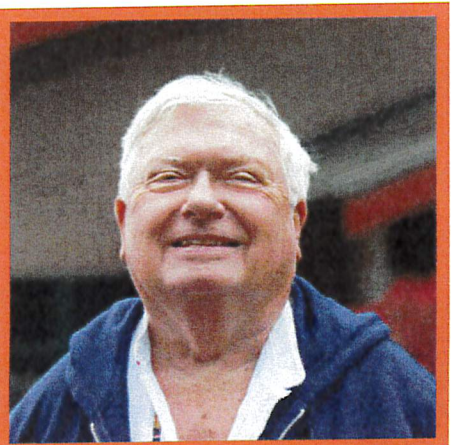
**BRIAN ZYLSTRA** | Lewis County | Term expires: 12/2022

For Brian, it has been a joy to be involved in such an integral part of the community. "I enjoy helping play a role as a trustee in improving services for patrons," he says. "I think Timberland is a great library system that provides a wide range of services to people, both in person and online. I'm also very proud that the Chehalis branch is the first library in our state to have a drive-through window!"



**TONI GWIN** | Pacific County | Term expires: 12/2028

"As a trustee, I hope to leverage my background and skills to strengthen our libraries and be a library advocate in our communities," Toni says.



**KENNETH SEBBY** | Mason County | Term expires: 12/2024

In his retirement, Kenneth still wanted to find ways to contribute to the community and help people, so in March 2021 he fulfilled a former member's term, which will end December 2024. For Kenneth, the library is an important part of every community, and he is honored to be part of the TRL Board. "The purpose of the TRL Board of Trustees is to promote reading and learning to all, but especially young, inquiring minds of all persuasions," he says. "A library should be a hub in the community, and it should be safe and fiscally sound...plus fun!"



## GRAYS HARBOR COUNTY

**Aberdeen Timberland Library**  
121 East Market Street; 360.533.2360

**Amanda Park Timberland Library**  
6118 US Highway 101; 360.288.2725

**Elma Timberland Library**  
119 North 1st Street; 360.482.3737

**Hoquiam Timberland Library**  
420 7th Street; 360.532.1710

**McCleary Timberland Library**  
121 South 4th Street; 360.495.3368

**Montesano Timberland Library**  
W.H. Abel Memorial Library  
125 Main Street South; 360.249.4211

**Oakville Timberland Library**  
204 Main Street; 360.273.5305

**Westport Timberland Library**  
101 East Harms Drive; 360.268.0521

## PACIFIC COUNTY

**Ilwaco Timberland Library**  
158 1st Avenue North; 360.642.3908

**Naselle Timberland Library**  
4 Parpala Road; 360.539.3327

**Ocean Park Timberland Library**  
1308 256th Place; 360.665.4184

**Raymond Timberland Library**  
507 Duryea Street; 360.942.2408

**South Bend Timberland Library**  
1st and Pacific; 360.875.5532

**Shoalwater Bay Tribal Community Library**  
4115 State Route 105, Tokeland; 360.267.8190

## MASON COUNTY

**Hoodsport Timberland Library**  
40 N Schoolhouse Hill Road; 360.877.9339

**North Mason Timberland Library (Belfair)**  
23081 NE State Rt 3; 360.275.3232

**Shelton Timberland Library**  
**William G. Reed Public Library**  
710 W Alder Street; 360.426.1362

## THURSTON COUNTY

**Hawks Prairie Timberland Library**  
8205 Martin Way; 360.252.9658

**Lacey Timberland Library**  
500 College Street Southeast; 360.491.3860

**Olympia Timberland Library**  
313 8th Avenue Southeast; 360.352.0595

**Tenino Timberland Library**  
172 Central Avenue West; 360.539.3329

**Tumwater Timberland Library**  
7023 New Market Street; 360.943.7790

**West Olympia Timberland Library**  
625 Black Lake Blvd SW; 360.764.4440

**Yelm Timberland Library**  
210 Prairie Park Street; 360.539.3330

**Book Return - Fire District 3, Station 35**  
3701 Willamette Drive, Lacey

**Book Return - West Olympia**  
1313 Cooper Point Road Southwest

**Rainier Book Drop at Rainier City Hall**  
102 Rochester Street West, Rainier

## LEWIS COUNTY

**Centralia Timberland Library**  
110 South Silver Street; 360.736.0183

**Vernetta Smith Chehalis Timberland Library**  
400 North Market Boulevard; 360.748.3301

**Mountain View Timberland Library (Randle)**  
210 Silverbrook Road; 360.497.2665

**Packwood Timberland Library**  
109 West Main Street; 360.494.5111

**Salkum Timberland Library**  
2480 US Highway 12; 360.539.3328

**Winlock Timberland Library**  
322 Northeast 1st Street; 360.785.3461

**Morton Centralia College East Kiosk**  
701 Airport Way; 360.496.5022

**Toledo Community Library Kiosk**  
241 Cowlitz Street ; 360.864.4247

*As a convenience to you, most checked out items can be returned to any TRL book returns. A few specifically labeled items need to be returned to their original location.*