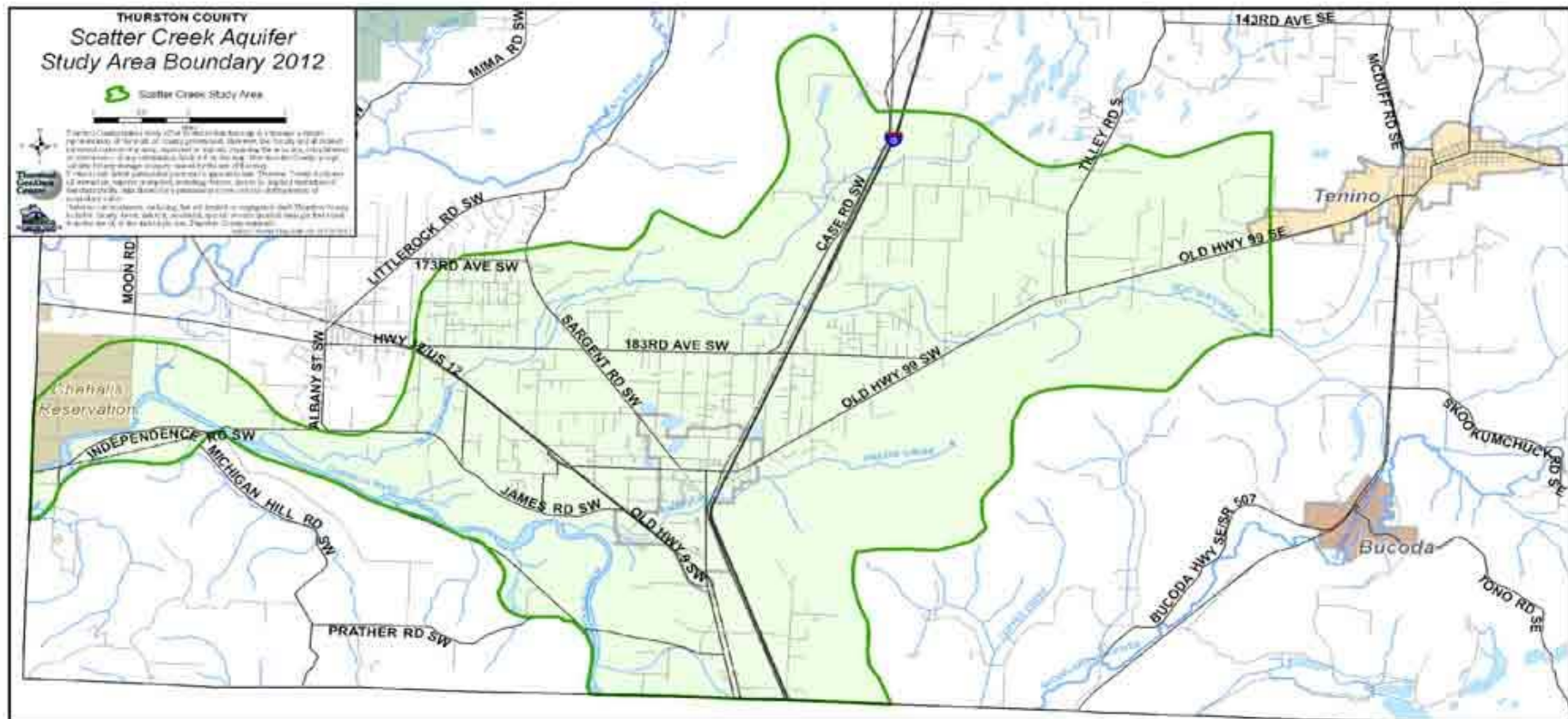


Schedule

- 6:30-7:30 Open House
- 7:30-8:00 Presentation
- 8:00-8:30 Questions and Answers


Please write down your questions throughout the evening, so we can answer as many as possible.

Potentially 1,000,000 gallons of sewage per day



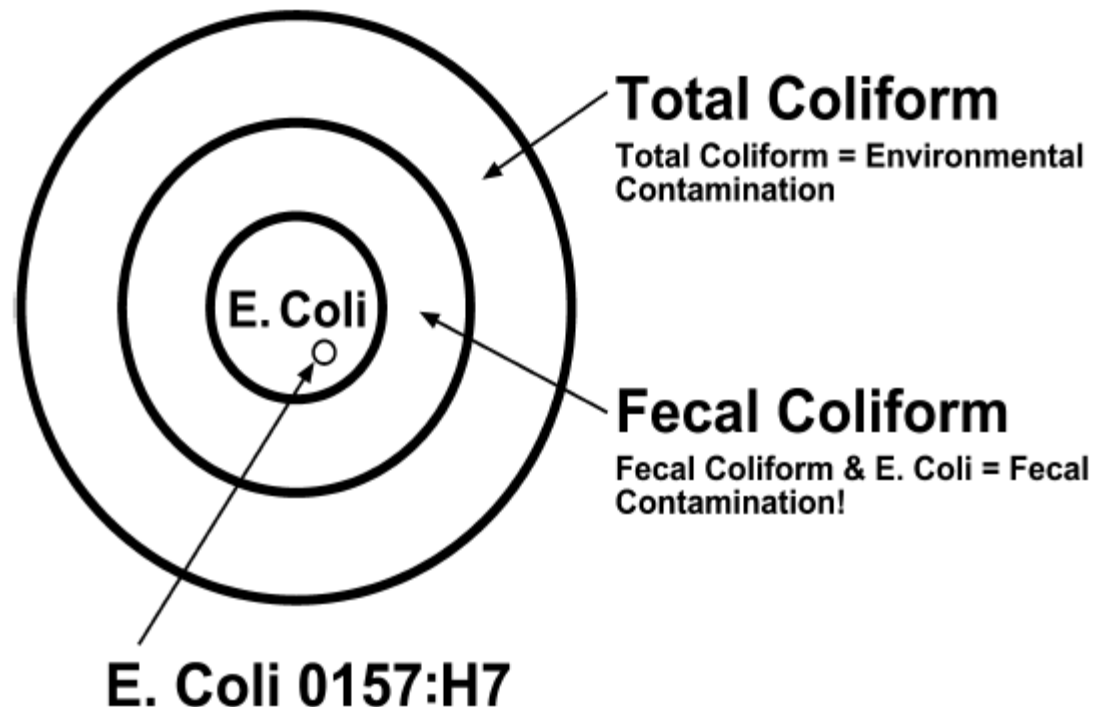
High Permeability Contributes to Ground Water Contamination



- 
- Know the aquifer has been contaminated by land uses in past
 - Seen improvement
 - Land use is in transition
 - Have opportunity to examine future impacts and take action to protect safe drinking water

What is Coliform Bacteria?

TOTAL COLIFORM, FECAL
COLIFORM AND E. COLI



What are Nitrates?

- Sources - Fertilizers, Manure, Sewage
- Natural levels in Groundwater < 2 mg/l
- Drinking Water Standard - 10 mg/l maximum
- Affects a person's health
- Indicates that other contaminants could be present, like pharmaceuticals

THURSTON COUNTY
Scatter Creek
Septic System & Underdeveloped Parcels
2013

Legend:

- Septic System & Underdeveloped Parcels (Blue)
- Undeveloped (Green)
- Parcels (Yellow)
- Urban Growth Areas (Black outline)

GPD Ranges:

- 1 - 360 GPD (Light Green)
- 361 - 720 GPD (Yellow-Green)
- 721 - 1440 GPD (Orange)
- 1441 - 6160 GPD (Red)
- 6161 - 23490 GPD (Dark Red)

Scale: 0.5, 0.25, 0, 0.5 Miles

Map Data:

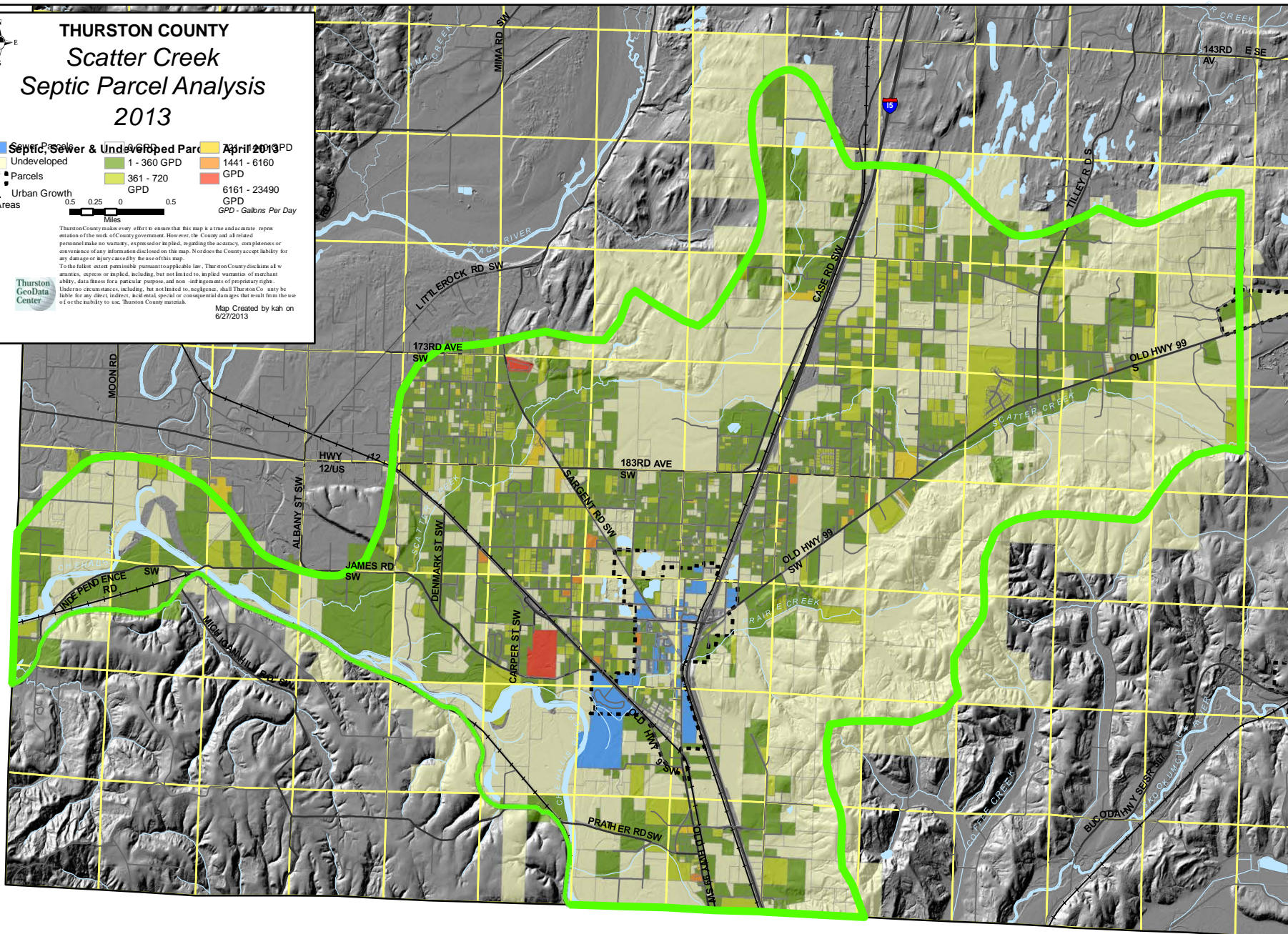
Area	GPD Range	GPD Value
Area 1	1 - 360 GPD	1441 - 6160
Area 2	361 - 720 GPD	6161 - 23490
Area 3	721 - 1440 GPD	1441 - 6160
Area 4	1441 - 6160 GPD	6161 - 23490

Map Notes:

Thurston County makes every effort to ensure that this map is a true and accurate representation of the work of County government. However, the County and its related personnel make no warranty, express or implied, regarding the accuracy, completeness or convenience of any information disclosed on this map. Nor does the County accept liability for any damage or injury caused by its use of this map.

To the fullest extent permissible pursuant to applicable law, Thurston County disclaims all warranties, express or implied, including, but not limited to, implied warranties of merchantability, data fitness for a particular purpose, and non-infringement of proprietary rights. Under no circumstances, including, but not limited to, negligence, shall Thurston County be liable for any direct, indirect, or consequential damages or claims that result from the use of or the inability to use Thurston County materials.

Map Created by kah on 6/27/2013



Decision Making Process

Citizens Committee works with Health Department

- Discusses results of modeling and monitoring
- Suggests scenarios to model
- Develops range of options to protect drinking water quality in aquifer
- Seek community input



Community Input

Your Job:

- Help us be sure we have considered all options
- Help us understand how each option will affect people
- Help us identify who else we need to include in the process

So that we can make the best responsible decision to protect drinking water.

Recommendations

Citizens Committee develops draft recommendations

- Shared with Board of Health and community
- Recommendations refined

If a policy change is recommended, it must go through its own public process before being adopted

- Notice
- Public hearing
- Formal adoption by Board