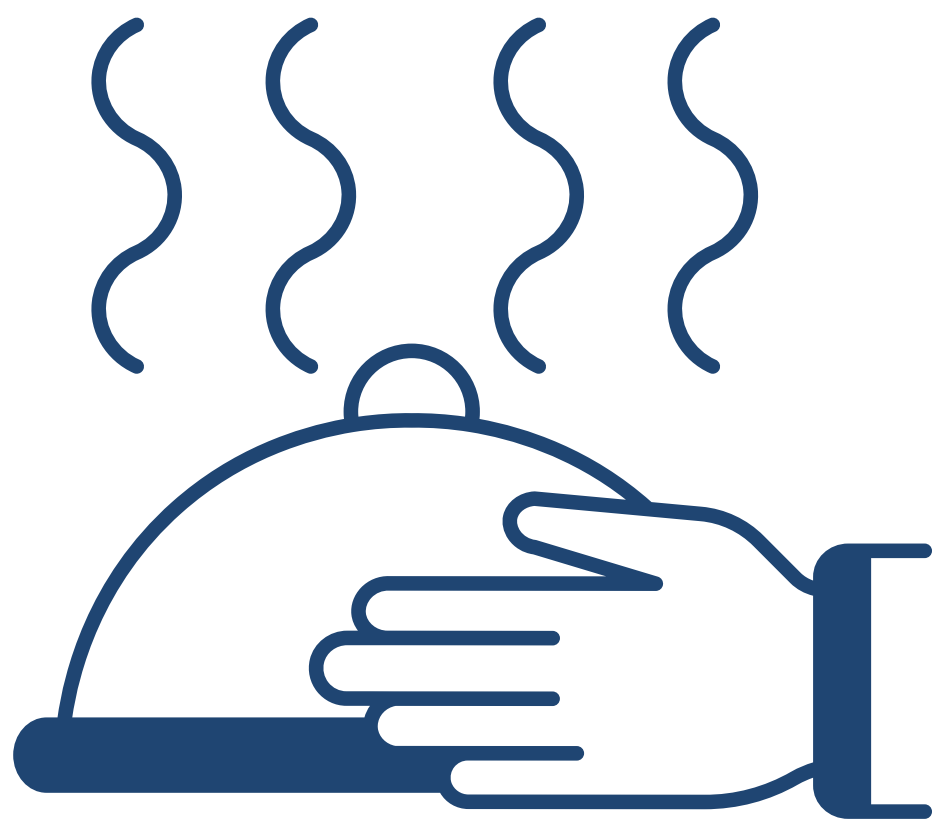
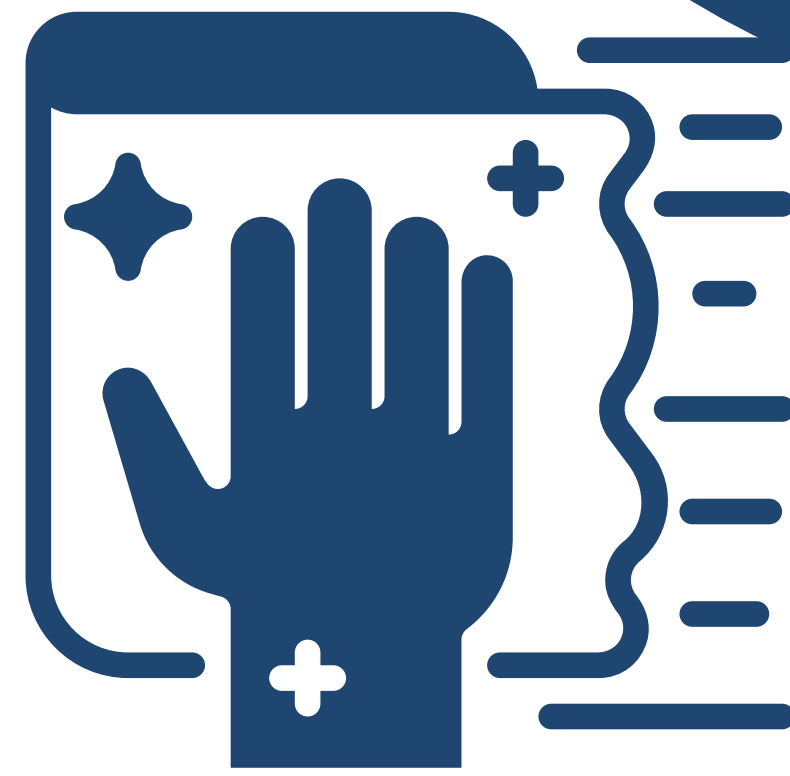




# SANITIZE AGAINST GERMS

## Work Spaces

- Sanitize community work spaces/equipment after use (especially if you are sick!)



## Hands to Food

- Sanitize hands before, during, and after preparing food. Germs can multiply in some types of foods or drinks, under certain conditions, and make people sick.

## Using Sanitizers

- If you are known to have especially sensitive skin, you may want to wear gloves when using sanitary products.

