

2023 WATER QUALITY REPORT

Tamoshan

This report contains important information about your drinking water.



Tamoshan

- Tamoshan Drive →
- Killarney Court →
- Leprechaun Lane →
- ← Tralee Drive
- ← Dublin Drive



Overlooking Puget Sound from Beverly Beach.

Our responsibility to operate water systems begins with our commitment to you. At Thurston County Public Works, our mission is to provide you high quality drinking water that is both safe and reliable. We take this commitment to our customers and community we serve seriously and work hard to plan, build and operate infrastructure with you in mind.

Many investments and improvements are underway to build efficiencies and resiliency within our utilities. We have improved our asset management program which is an important tool for managing our infrastructure. A new well has been drilled to improve the quality of our source water, reduce treatment costs, and provide a higher quality product to you. We are in the process of finalizing a utility consolidation project, which will provide operational and financial efficiencies and rate stabilization for our customers. In 2022, the Board of County Commissioners allocated federal funding to replace a significant portion of the older infrastructure, such as water and sewer lines.

We are proud of the investment in and operation of the Tamoshan Water System. The quality and reliability of your drinking water is the result of the partnership with the Tamoshan community and the dedication and expertise of our employees, who work tirelessly to fulfill our promise to you.

This water quality report is in accordance with the federal Safe Drinking Water Act and Washington Department of Health regulations. The report provides detailed results from drinking water tests taken in 2022 and compares the results to federal and state standards.

Thank you for allowing us to serve you and for your partnership in ensuring your drinking water remains safe and reliable.

Jennifer D. Walker

Director, Thurston County Public Works

PARA NUESTROS CLIENTES HISPANOHABLANTE:

Este informe proporciona los resultados de los análisis efectuados en el agua potable durante el año 2022. Dichos resultados demostraron que su agua potable cumplió con las normas de seguridad estatales y federales. De acuerdo a los requisitos en el procesamiento de los informes, los resultados del año 2023 serán enviados por el website www.thurstoncountywa.gov/pw en el año 2024.

TABLE OF CONTENTS

WATER SOURCE AND TREATMENT	4
WATER QUALITY AND HEALTH	5
TAMOSHAN WATER QUALITY IN 2022	6
RECENT PROJECTS IN TAMOSHAN	9
HELP PROTECT WATER QUALITY	10
TIPS TO SAVE WATER & MONEY	11
CONTACT US	12

99%

WATER USE EFFICIENCY

Washington State recommends a rating of 90% or higher.



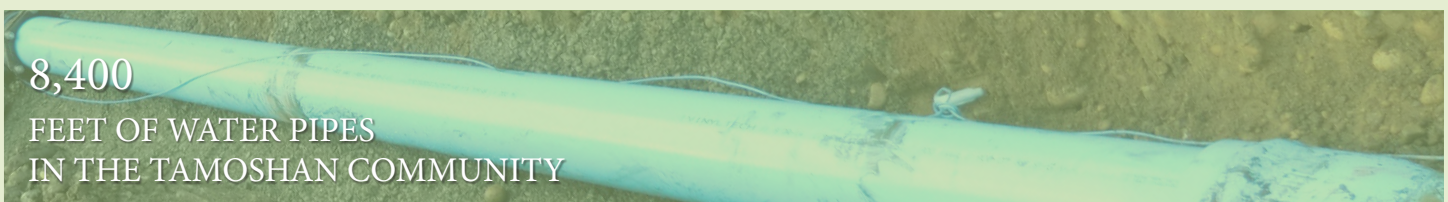
92
CONNECTIONS



29
WATER SAMPLES
ANALYZED
IN 2022



6.1
MILLION
GALLONS
WATER
DELIVERED IN 2022



8,400
FEET OF WATER PIPES
IN THE TAMOSHAN COMMUNITY



WATER SOURCE AND TREATMENT

Tamoshan's drinking water comes from groundwater within the Upper Salmon Springs Drift - part of the Puget Sound aquifer system. The water is pumped from the aquifer through a 580-foot deep well, adjacent to the water reservoir off 63rd Avenue.

To protect public health, your water is disinfected with chlorine. Disinfection is vital to eliminating bacterial and viral contaminants that can cause illness to you, your family, and your pets. Chlorine is particularly effective in killing the microbial organisms that cause cryptosporidiosis, cholera, giardia, salmonella, and other illnesses. By acting as a protective barrier, chlorine prevents recontamination of water while it is in your pipes.

Thurston County Public Works regularly conducts water quality testing to ensure the safety of your drinking water. We test for the following contaminants:

- Inorganic contaminants, such as nitrates, salts, and metals, which can occur naturally or result from urban stormwater runoff, industrial or

domestic wastewater discharges, and farming.

- Copper and lead, which can leach from your household plumbing system.
- Microbial contaminants, such as bacteria, parasites, and viruses, that may come from sewage treatment plants, septic systems, agriculture, or wildlife.
- Pesticides and fertilizers, which may come from agriculture, stormwater runoff, and residential uses.
- Organic chemical contaminants, such as petroleum products and byproducts from industrial manufacturing.
- Radioactive contaminants, which can occur naturally or are the result of oil and gas production.
- Disinfection byproducts, which are compounds that form in the presence of chlorine or other disinfectants.



WATER QUALITY AND HEALTH

Sources of drinking water (both tap and bottled water) include rivers, lakes, streams, ponds, reservoirs, springs, and wells. As water travels over the surface of the land or through the ground, it dissolves naturally occurring minerals, in some cases radioactive material, and substances resulting from the presence of animals or from human activity. Drinking water, including bottled water, may reasonably be expected to contain at least small amounts of some contaminants. The presence of these contaminants does not necessarily indicate that the water poses a health risk. More information about contaminants and potential health effects can be obtained by calling the Environmental Protection Agency (EPA) Safe Drinking Water Hotline at 1-800-426-4791.

To ensure that tap water is safe to drink, the Washington Department of Health and the EPA prescribe regulations that limit the amount of certain contaminants in water provided by public water systems. The Food and Drug Administration and the Washington Department of Agriculture

establish limits for bottled water contaminants that provide the same protection for public health.

Some people may be more vulnerable to contaminants in drinking water than the general population. Immunocompromised persons such as persons with cancer undergoing chemotherapy, persons who have undergone organ transplants, people with HIV/AIDS or other immune system disorders, some elderly, and infants, may be particularly at risk from infections. These people should seek advice about drinking water from their health care providers. EPA/Centers for Disease Control guidelines on appropriate means to lessen the risk of infection by cryptosporidium and other microbial contaminants are available from the Safe Drinking Water Hotline at 1-800-426-4791.

**EPA SAFE
DRINKING
WATER
HOTLINE
800-426-4791**



TAMOSHAN WATER QUALITY IN 2022

Tamoshan's drinking water is monitored and tested extensively throughout the year. After testing nearly 200 chemical compounds, only a few were detected - they are presented in the following tables. Some of the information is older because not all contaminants are tested each year. If you would like a complete list of the chemical compounds tested but not detected, please call Thurston County Public Works at 360-867-2300.

READING THE REPORT TABLES

CONTAMINANT TESTED					
CONTAMINANT	VIOLATION (Y/N)	HIGHEST LEVEL DETECTED	ACTION LEVEL (AL)	IDEAL GOAL (MCLG)	LIKELY SOURCE OF CONTAMINATION
Contaminant tells you the chemical sampled.		Highest Level Detected shows you the highest amount of the contaminant detected during sampling.		Ideal Goal shows you the contamination level the county strives to stay below.	
	Violation tells you whether or not the amount of contaminant present in the sample exceeded state and federal standards.		Maximum Level Allowed or Action Level shows you the greatest amount of a contaminant allowed before treatment is required or regulations are exceeded.		Likely Source of Contamination tells you the likely origin of the contaminant.

DEFINITIONS AND UNITS OF MEASURE

Action Level (AL)

The concentration of a contaminant which, if exceeded, triggers treatment or other requirements which a water system must follow.

Maximum Contaminant Level (MCL)

The highest level of a contaminant that is allowed in drinking water. MCLs are set at very stringent levels. To understand possible health effects described for many regulated constituents, a person would have to drink two liters of water every day at the MCL level for a lifetime to have a one-in-a-million chance of having the described health effect.

Maximum Contaminant Level Goal (MCLG)

The “goal” is the level of a contaminant in drinking water below which there is no known or expected risk to health. These goals allow for a margin of safety.

Maximum Residual Disinfectant Level (MRDL)

The highest level of a disinfectant allowed in drinking water. There is convincing evidence that addition of a disinfectant (e.g. chlorine) is necessary for control of microbiological contaminants.

Maximum Residual Disinfectant Level Goal (MRDLG)

The level of a drinking water disinfectant below which there is no known or expected risk to health. MRDLGs do not reflect the benefits of the use of disinfectants to control microbial contaminants.

Micrograms Per Liter (ugl)

A unit of measurement equivalent to parts per billion. One part per billion is roughly one second in 32 years.

Milligrams Per Liter (mgl)

A unit of measurement equivalent to parts per million. One part per million is roughly one second in 12 days.

Treatment Technique (TT)

A required process intended to reduce the level of a contaminant in drinking water.

WATER QUALITY REPORT TABLES

COPPER & LEAD* (2022 DATA)				
CONTAMINANT	VIOLATION (Y/N)	HIGHEST LEVEL DETECTED	ACTION LEVEL (AL)	LIKELY SOURCE OF CONTAMINATION
Copper	N	0.088 mgl	1.3 mgl	Corrosion of household plumbing systems.
Lead	N	0.024 mgl**	0.015 mgl	Corrosion of household plumbing systems.

In Washington State, lead in drinking water comes primarily from materials and components used in household plumbing. The more time water has been sitting in pipes, the more dissolved metals, such as lead, it may contain. Elevated levels of lead can cause serious health problems, especially in pregnant women and young children.

To help reduce potential exposure to lead: for any drinking water tap that has not been used for 6 hours or more, flush water through the tap until the water is noticeably colder before using for drinking or cooking. You can use the flushed water for watering plants, washing dishes, or general cleaning. Only use water from the cold-water tap for drinking, cooking, and especially for making baby formula. Hot water is likely to contain higher levels of lead. If you are concerned about lead in your water, have your water tested. Information on lead in drinking water is available from EPA’s Safe Drinking Water Hotline 1-800-426-4791 or online at [epa.gov/safewater/lead](https://www.epa.gov/safewater/lead).

**The most current data for this measurement is from 2019. Lead and Copper samples were pulled from individual homes in 2019, to comply with DOH requirements. Samples were not taken in 2021. **Despite the maximum level surpassing the action level, there was no violation as compliance is determined by the 90th percentile concentration, not the maximum level.*

INORGANIC CHEMICAL CONTAMINANTS (2022 DATA)

CONTAMINANT	VIOLATION (Y/N)	HIGHEST LEVEL DETECTED	MAXIMUM LEVEL ALLOWED (MCL)	LIKELY SOURCE OF CONTAMINATION
Nitrates	N	<0.5 mg/l	10 mg/l	Runoff from fertilizer use; leaching from septic tanks; sewage; and erosion of natural sources.
Iron	N	<0.1 mg/l	0.3 mg/l	Naturally occurring

MICROBIAL CONTAMINANTS (2022 DATA)

CONTAMINANT	VIOLATION (Y/N)	HIGHEST LEVEL DETECTED	TREATMENT TECHNIQUE	LIKELY SOURCE OF CONTAMINATION
Fecal indicators (<i>E. coli</i>)	N	No detect (13 samples taken)	Chlorination	Human and animal fecal waste.

CHEMICAL BYPRODUCTS OF DISINFECTION (2022 DATA)

CONTAMINANT	VIOLATION (Y/N)	ANNUAL AVERAGE	MAXIMUM CONTAMINANT LEVEL (MCL)	LIKELY SOURCE OF CONTAMINATION
Trihalomethanes	N	50.64 ug/l	12-month running average 80 ug/l	Byproduct of drinking water disinfection.
Haloacetic acids	Y	95.36 ug/l	12-month running average 60 ug/l	Byproduct of drinking water disinfection.

CONTAMINANTS (2021 DATA)

CONTAMINANT	VIOLATION (Y/N)	HIGHEST LEVEL DETECTED	TREATMENT TECHNIQUE	LIKELY SOURCE OF CONTAMINATION
Synthetic Organic Compounds & Radionuclides	N	.131 (2 samples taken)	n/a	Herbicides and pesticides.
Volatile Organic Contaminants	N	.131 (2 samples taken)	n/a	Gasoline, solvents and cleaners.

Thurston County Public Works is addressing the high 2022 haloacetic acid levels by:

- Installing a new well to draw water from a different location and depth, ensuring the most cost effective way to deliver clean and safe drinking water with less treatment required. The current well requires more expensive forms of treatment to reduce the disinfection byproducts. The new well is set to be installed in late 2023.



RECENT PROJECTS

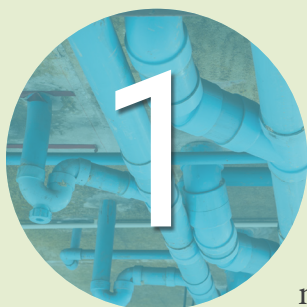


ASSET MANAGEMENT

The Utilities Asset Management Plan is a multiyear project to map and document the County's water infrastructure. This will enable staff to easily track, plan, and coordinate utility operations, conduct capital facility planning, and improve service levels.

WATER QUALITY IMPROVEMENTS

In 2022, the County completed design for Phase 1 of the Tamoshan Water Quality Improvement Project. This project will drill a test well to investigate the feasibility of replacing the County's existing well source to improve drinking water quality.



PREVENT BACKFLOW

Did you know that water from your drain could end up flowing into Tamoshan's drinking water system? When your water system loses pressure, used water from your plumbing fixtures - such as sprinklers, hot tubs, and swimming pools - can get drawn back into the drinking water pipes and contaminate the whole neighborhood's water supply. If you have recently installed a swimming pool, hot tub, or sprinkler system please contact us at tcutilities@co.thurston.wa.us to learn more about how you can help keep our water system safe by using a backflow prevention device.

PICK UP PET POOP

Did you know that Thurston County dogs generate around six tons of pet waste every single day? Make sure your pooch's waste doesn't lay around to wreak havoc on the environment or the bottom of people's shoes. Pet poop contains bacteria, viruses, and parasites that can make their way into your drinking water supply. Make sure to scoop it, bag it, and trash it - every dog, every poo, every time.



KEEP STORMWATER CLEAN

Storm drains prevent flooding in our streets and neighborhoods by draining rain water into the nearest body of water. Along the way, rain water can pick up pollutants on streets and in storm drains - polluting our drinking water sources with paint, oil, toxic chemicals, fertilizers, pesticides, soaps, yard waste, and litter. Keep storm drains and ditches clear of yard waste and litter. Use common sense lawn care practices described at co.thurston.wa.us/health/ehcsg/index.html. And, never hose or dump anything into the storm drain.



TIPS TO SAVE WATER & MONEY

KITCHEN.

- Use a dishwasher in lieu of hand washing dishes.
- Install an instant water heater so you don't waste water waiting for it to heat up.

BATHROOM.

- Upgrade older toilets with WaterSense® models and install aerators on all your faucets.
- Shorten your shower by a minute or two and you'll save up to 150 gal/month.

LAUNDRY.

- Consider purchasing a high efficiency washing machine to save water and energy.
- When doing laundry, make sure to match water level to the size of the load.

OTHER INDOOR.

- Run your washer and dishwasher only when full - could save you up to 1000 gal/month.
- Monitor your water bill for unusually high use. It can help you discover leaks.

LANDSCAPING.

- Use native plants in your yard to significantly reduce irrigation needs.
- Aerate your lawn periodically to allow greater water percolation.

OTHER OUTDOOR.

- Use a commercial car wash to save water and prevent soaps from entering storm drain.
- Use a broom instead of a hose to clean patios, sidewalks, and driveways.

WATER SAVING RESOURCES.

- Check out wateruseitwisely.com for 100+ water and energy saving tips.
- Visit gracelinks.org/1297/how-to-save-water for even more water-saving tips.



CONTACT US



360-867-2300



thurstoncountywa.gov/pw



Thurston County Public Works
9605 Tilley Rd. S
Olympia, WA 98512



[@Thurston_PW](https://twitter.com/Thurston_PW)



Water service: Kevin Patching, kevin.patching@co.thurston.wa.us
Customer service & billing: tcutilities.co.thurston.wa.us

If you are a Tamoshan property manager, please pass this information on to your tenant or guest. Thank you!

