

# **RECYCLING**

Recycle plastics by shape.  
Ignore numbers/symbols on packaging.

**PREPARATION** empty · clean (quick rinse) · dry · no lids · do not bag

## **PLASTIC**



## **METAL**



## **PAPER**



## **GLASS**

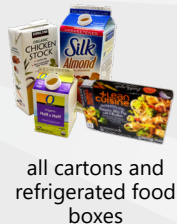
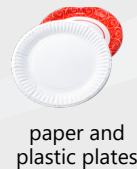
Put glass bottles and jars  
in a separate recycling  
bin. **Keep out of mixed  
recycling.**

**Olympia customers:**  
take glass to drop-off  
sites only.



# **GARBAGE**

Still not sure? Look it up!  
[WhereDoITakeMy.org](http://WhereDoITakeMy.org)



**WhereDoITakeMy.org**  
(360) 867-2491



Revised 5/22

# Your **Thurston County** **Recycling Guide** is here!

City of Olympia customers – review the city guide and directory.

*Updated  
for 2022*

TEAR OFF MAGNET BEFORE RECYCLING THIS GUIDE

WhereDoITakeMy.org 

Search any item online and  
find drop-off locations for:

- appliances
- clothing
- electronics
- foam packaging
- chemicals

...plus hundreds more!

Thurston County Public Works  
9605 Tilley Road S Ste C  
Olympia, WA 98512-9140