

Boulder

Telehealth addiction treatment grounded in
kindness, respect and unconditional support.

Boulder Care Overview | June 2023

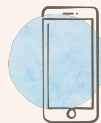
Boulder's services & treatment philosophy



SUD Treatment

Care teams prescribe medications to treat :

- **Opioid Use Disorder (OUD)**
- **Alcohol Use Disorder (AUD)**
- Short-term management of co-occurring conditions, including nicotine dependence, depression, anxiety, and insomnia



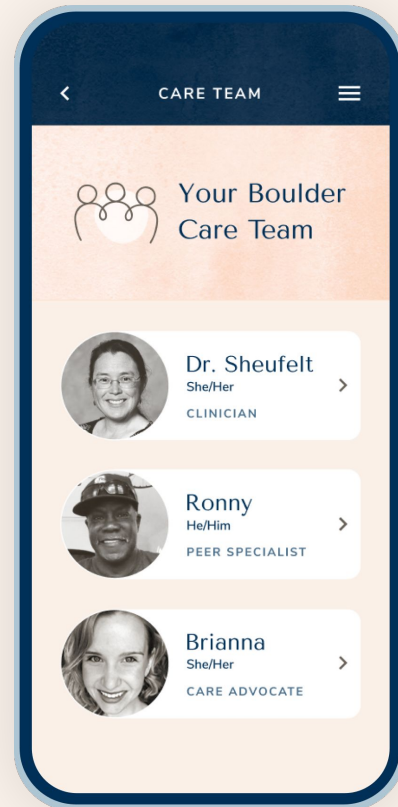
Care Anywhere

Boulder's mobile app makes it easy for enrolled patients to **access care anytime, anywhere** through secure video, phone, and messaging.

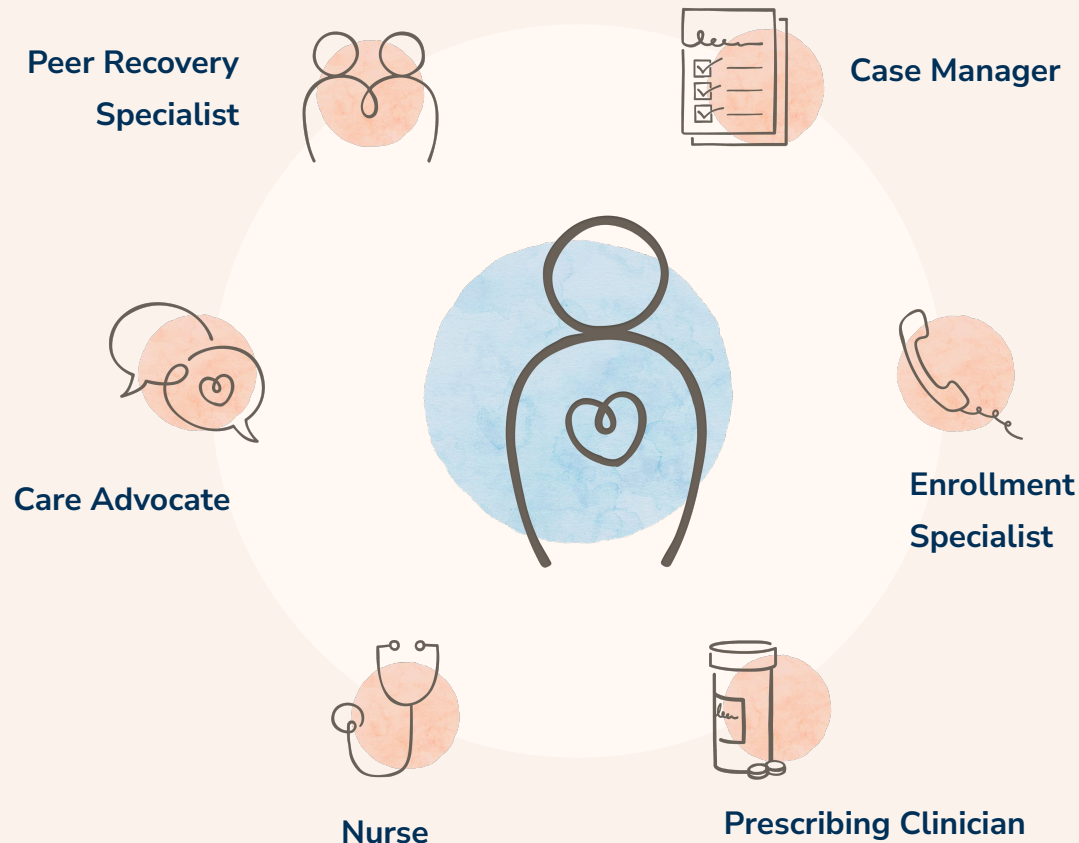


Grounded in Empathy

We provide long-term, unconditional support grounded in **harm reduction**. We understand that recovery is not linear, and we're there for our patients all along the way.



Care Team: Wrap-around support



Care teams provide whole-person care



Prescribing Clinicians

- Develop a care plan with the patient that aligns with their needs and goals
- Prescribe medications for OUD and/or AUD



Care Advocates

- Help navigate medical systems: make referrals to other providers, resolve insurance questions, ensure pharmacy/medication access



Peer Recovery Specialists

- Support patients without judgement, sharing their own lived experience with addiction as a means to build trust.
- Help patients identify and move toward their recovery goals



Enrollment Specialists

- Create a welcoming and simple enrollment process for new patients
- Support current patients: re-scheduling visits, solving basic app issues, connecting to care team



Case Managers

- Assist high acuity patients with resource and system navigation (housing, mental health/primary care, government benefits, legal support)



Nurses

- Support Clinicians, enabling flexible scheduling and increasing patient access

Unparalleled outcomes

80%

of new patients seen
in <48hrs

62%

of patients stay in
care for 6 months

93%

of patients are meeting
their goals of reducing
unwanted use

29%

industry average

Retention in buprenorphine treatment **reduces mortality risk by 50% or more.**
After 12 months in care, **ED utilization and hospitalizations decline by >85%.**

Referring Members to Boulder

- Give us a call at **888-720-2236**
Mon-Fri 6am–7pm, Sat 9am–2pm (Pacific)
- Submit a referral form at
www.boulder.care/referral
- Encourage your patient to self-enroll at
www.boulder.care/enrollnow
or by calling **888-720-2236**
- Download the Boulder app and enroll



Boulder

Boulder Care offers evidence-based telehealth addiction treatment grounded in kindness, respect, and unconditional support.

Virtual Treatment

No more waiting rooms or long trips to a clinic. Boulder's telehealth program is delivered entirely virtually, through video visits and messaging in our app.

Compassionate Care

Boulder champions harm reduction and unconditional support. Dedicated Care Teams collaborate across medical, behavioral, and psychosocial dimensions to help patients meet their unique recovery goals.

Proven Results

The right combination of medication, peer coaching, care coordination, and other recovery tools drives engagement and clinical outcomes. ~80% of our patients continue working with us for at least 12 months.

Customized to You

Recovery looks different for each individual. What matters to your patient is what matters to us. We'll never penalize for missed visits, returning to use, or using other substances—we're just here to help patients work toward their goals.

www.boulder.care/referral · (888) 720-2236

Referring Patients

Give us a call.
You can reach a member of the Boulder team at 888-720-2236. We'll collect some basic information about your patient and reach out to schedule their first visit.

Submit a referral form.
Share your patient's information with us through our secure, HIPAA-compliant referral form at www.boulder.care/referral and we'll reach out to them directly.

Encourage your patient to self-enroll.
Direct your patient to www.boulder.care/enrollnow or have them call us at 888-720-2236.

I had a perfectly seamless consult with [Boulder] yesterday... I was impressed, as was patient. They presented in withdrawal, got an ED dose [of buprenorphine], then referred with an in ED consult to the on-call Boulder physician.

—REFERRING PHYSICIAN, PROVIDENCE EMERGENCY DEPT.

Thank you!

(866) 288-5885

www.boulder.care

Boulder