



MEMORANDUM

DATE: September 2, 2022

TO: Arthur Saint
Thurston County

FROM: Spenser Haynie
TENW

SUBJECT: Trip Generation and Distribution Memo
Lakeside Durgin Asphalt Plant – Thurston County, WA (PRESUB #2022100806)
TENW Project No. 2022-234

This memorandum documents the preliminary trip generation and distribution information for the proposed change in operations at the Lakeside Durgin Asphalt Plant project to confirm whether additional traffic analysis is required for this project. This memo includes a project description, trip generation estimate, and project trip distribution.

Project Description

The existing Lakeside Durgin Asphalt Plant is located east of Old Pacific Highway SE and south of Durgin Road SE in Thurston County. A site vicinity map is provided in **Attachment A**. The plant began operation in 2008 under a Special Use Permit (SUP) issued by the County. The SUP prohibited the recycling of Reclaimed Asphalt Pavement (RAP) due to an underlying Comprehensive Plan prohibition in this area. Since then, the language in the Comprehensive Plan/Nisqually Subarea Plan has been amended and now allows the recycling of RAP in this area. Now that the recycling of RAP is allowed, the plant operators are applying for a new/modification of the SUP to allow for the recycling of RAP.

Vehicular access to the site is currently provided via connection to Durgin Road SE, east of Old Pacific Highway SE. No changes to access are proposed.

Project Trip Generation

The proposed RAP recycling operation is not consistent with any Institute of Transportation Engineers (ITE) *Trip Generation* manual land use category. As a result, the trip generation estimates for the proposed project were based on the anticipated yearly tonnage of RAP anticipated to be processed, truck capacity, and days of operation per year provided by the Applicant. It should be noted that no new employees are anticipated as part of the new recycling of RAP operation and the trip generation estimates presented in this memo represent the additional truck traffic expected to and from the existing Lakeside Durgin Asphalt Plant site. Below is a brief narrative to describe how the trip generation estimates were developed.

The trip generation estimates for the proposed Lakeside Durgin Asphalt Plant were calculated based on the amount of RAP imported to the facility per year to meet the recycling demand assuming maximum recycling and production capability. The plant is currently permitted to produce 300,000 tons of asphalt mix per year. A maximum of 40% of the mix will be allowed to be RAP, resulting in 120,000 tons of RAP permitted per year. Based on an average truckload of 30 tons, the recycling of RAP operation is expected to result in a

maximum of 4,000 additional trucks per year. Assuming the plant operates 150 days per year, this equates to 27 additional trucks entering and exiting the site per day associated with the proposed RAP recycling operation.

Project Trip Distribution

The distribution of project-generated trips to the adjacent street is assumed to be consistent with the trip distribution patterns documented in the 1998 *Lakeside Industries Transportation Impact Analysis*. The project-generated trips are anticipated to be generally distributed to the street system as follows:

- 10 percent to/from the south on Old Pacific Highway
- 30 percent to/from the north on I-5
- 60 percent to/from the north on Old Pacific Highway

The distribution of the project-generated trips is illustrated in **Attachment B**.

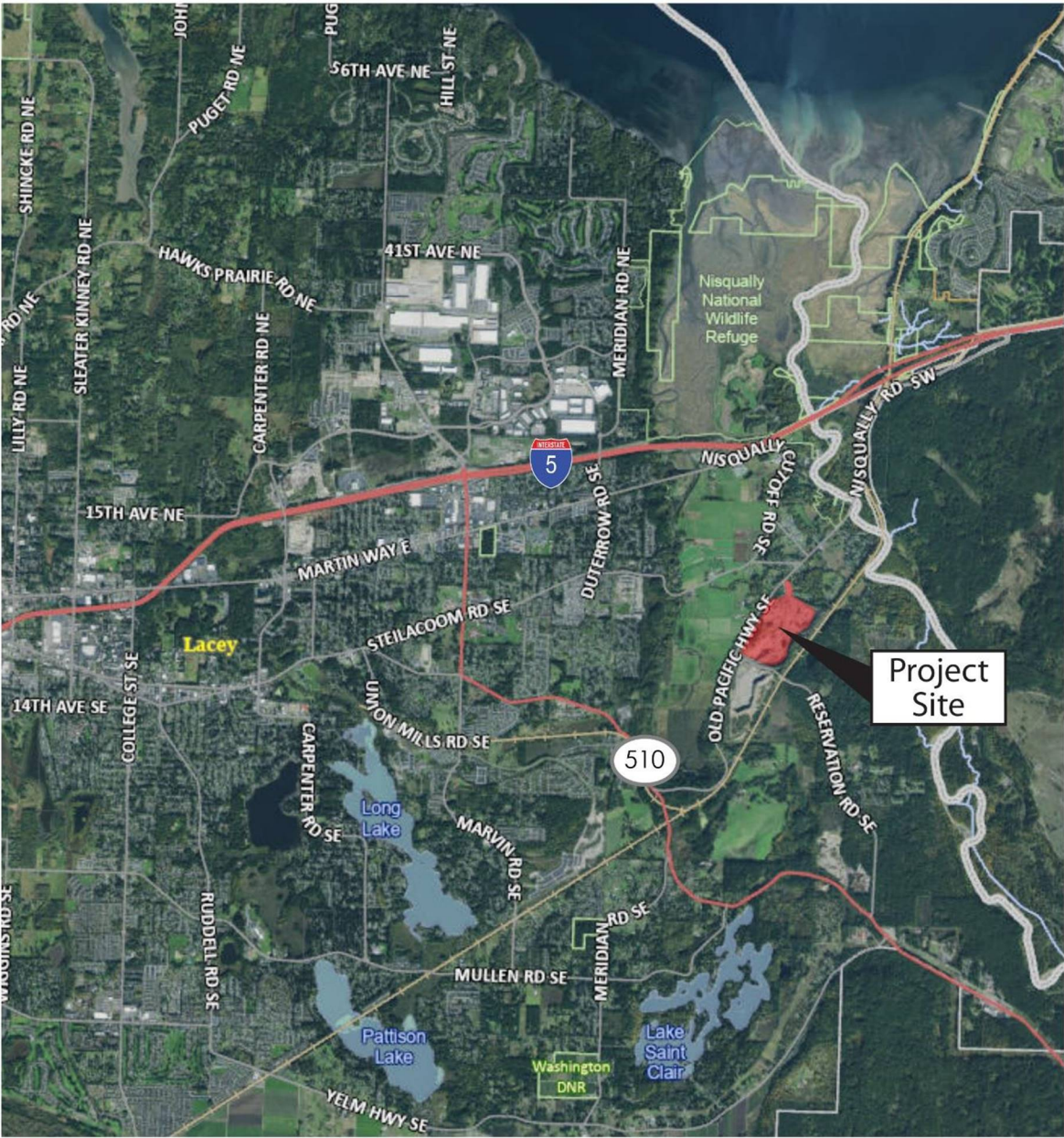
Next Steps

Based on Thurston County's Traffic Analysis Requirements as documented in Section 5 of the County's Road Standards, a Traffic Impact Analysis (TIA) is not required for projects estimated to generate less than 100 PM peak hour trips. Since the RAP recycling operation is anticipated to generate 27 additional trucks entering and exiting the site per day, we would like to confirm that no additional analysis will be required for the proposed Lakeside Durgin Plant project.

If you have any questions regarding the information presented in this memo, please contact me at (206) 390-7253 or spenser@tenw.com.

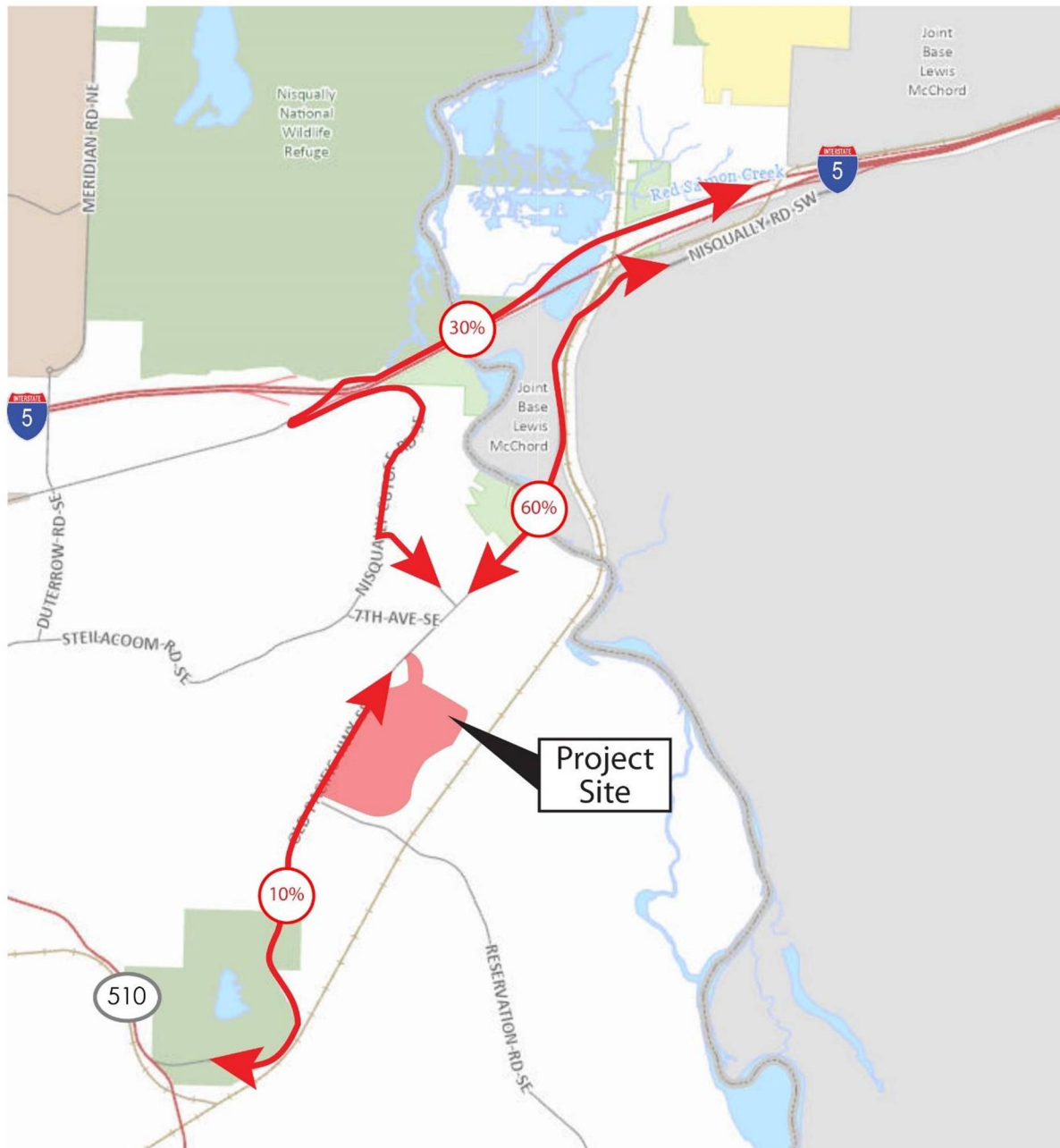
cc: Kyler Danielson – Lakeside Industries
Jeff Schramm – TENW

Attachments



Attachment A: Project Site Vicinity





Attachment B: Project Trip Distribution

