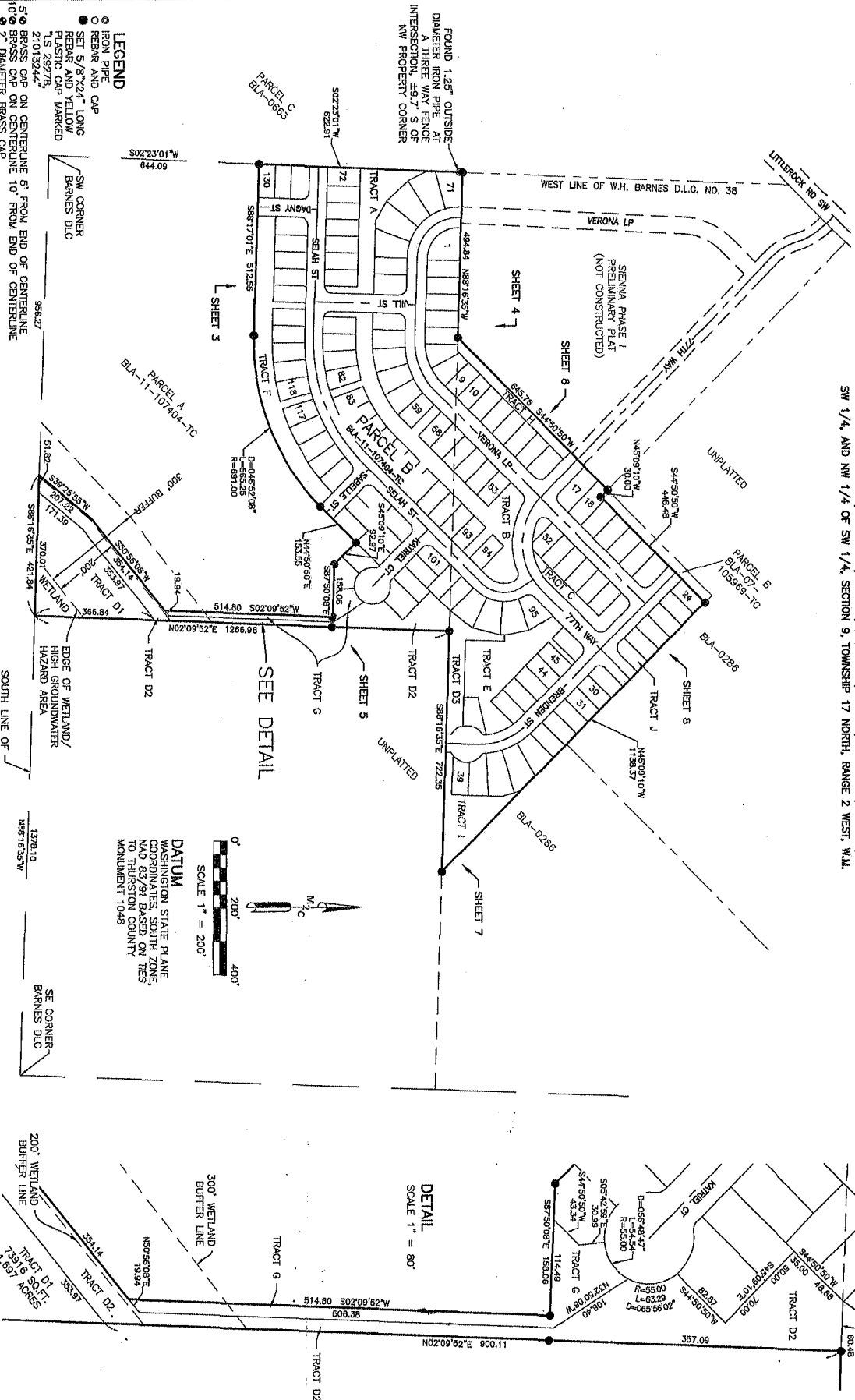


PLAT 4971645 2/9

PLAT OF SIENNA II

A PORTION OF THE BARNES DONATION LAND CLAIM NO. 38:
A PORTION OF THE NW 1/4 OF SE 1/4, NE 1/4 OF SW 1/4, SE 1/4 OF SW 1/4, SW 1/4 OF
SW 1/4, AND NW 1/4 OF SW 1/4, SECTION 9, TOWNSHIP 17 NORTH, RANGE 2 WEST, W.M.



SURVEY NOTES

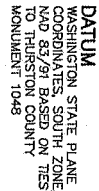
1. INSTRUMENT USED: SOKKIA SRX 3 TOTAL STATION AND TOPCON GPS.
2. THIS SURVEY MEETS OR EXCEEDS THE STANDARDS OF WAC 332-130-090.
3. FOUND MONUMENTS SHOWN AS FOUND VISITED 04/2020.
4. SURVEY COMPLETED 12/2021
5. MONUMENT (420) WAS RETAINED BY AMH DEVELOPMENT TO COMPLETE
6. AT THE TIME OF FINAL PLAT SUBMITTAL, LOT CORNERS & STREET MONUMENTS HAVE NOT BEEN SET. LOT CORNERS & STREET MONUMENTS WILL BE SET UPON COMPLETION OF ROAD IMPROVEMENTS.

SHEET INDEX

- | SHEET | TITLE |
|---------|---|
| SHEET 1 | PLAY OVERALL, DATUM, LEGEND, SURVEY NOTES |
| SHEET 2 | PLAY MAP LOT 72-82, 118-130 |
| SHEET 3 | PLAY MAP LOT 125-135, 139-151 |
| SHEET 4 | PLAY MAP LOT 152-162, 165-177 |
| SHEET 5 | PLAY MAP LOT 178-188, 191-203 |
| SHEET 6 | PLAY MAP LOT 204-214, 217-229 |
| SHEET 7 | PLAY MAP LOT 230-240, 243-255 |
| SHEET 8 | PLAY MAP LOT 256-266, 269-281 |
| SHEET 9 | PLAY MAP LOT 282-292, 295-307 |

REFERENCE SURVEYS

1. BIA 07 105969 TC, AFN 3958429.
2. BIA 11 107404 TC, AFN 4226132.



DATUM
WASHINGTON STATE PLANE
COORDINATES, SOUTH ZONE,
NAD 83/91 BASED ON TIES
TO THURSTON COUNTY
MONUMENT 1046

DETAIL

SCALE 1" = 80'

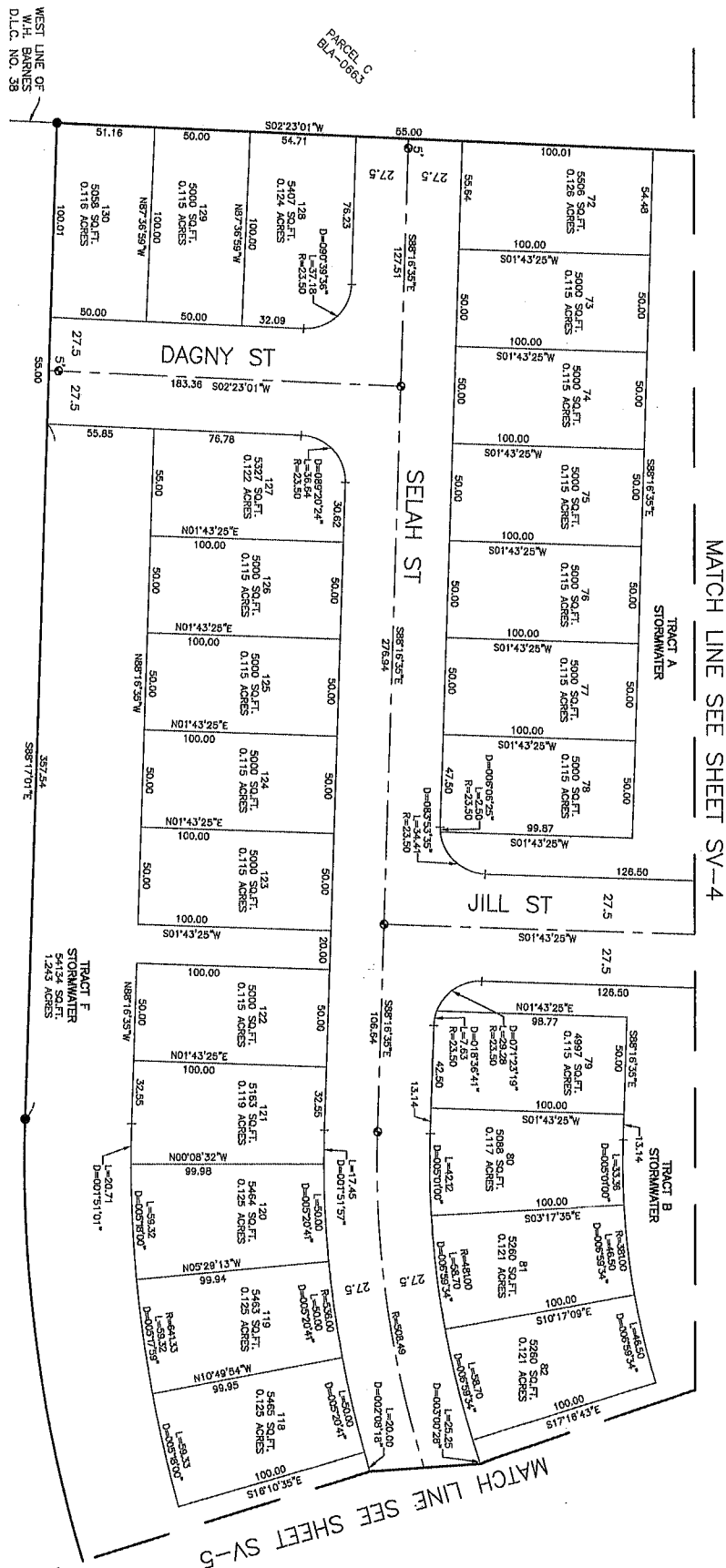


DRAWN BY MTC		DATE 1/20/2023	
CHECKED BY SEP		JOB NUMBER 21-489	
		SHEET NUMBER 2 OF 9	

PROFESSIONAL LAND SURVEYORS 2320 MOTTMAN RD SW, STE 106
TUMWATER, WA 98512
360.0861.7469

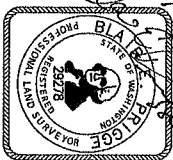
MTN & COAST LLC


A PORTION OF THE BARNES DONATION LAND CLAIM NO. 38:
A PORTION OF THE NW 1/4 OF SE 1/4, NE 1/4 OF SW 1/4, SE 1/4 OF SW 1/4, SW 1/4 OF
SW 1/4, AND NW 1/4 OF SW 1/4, SECTION 9, TOWNSHIP 17 NORTH, RANGE 2 WEST, W.M.



100.00
S1 0° 10' 35" E

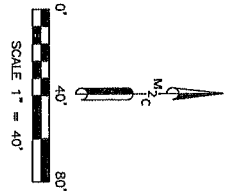
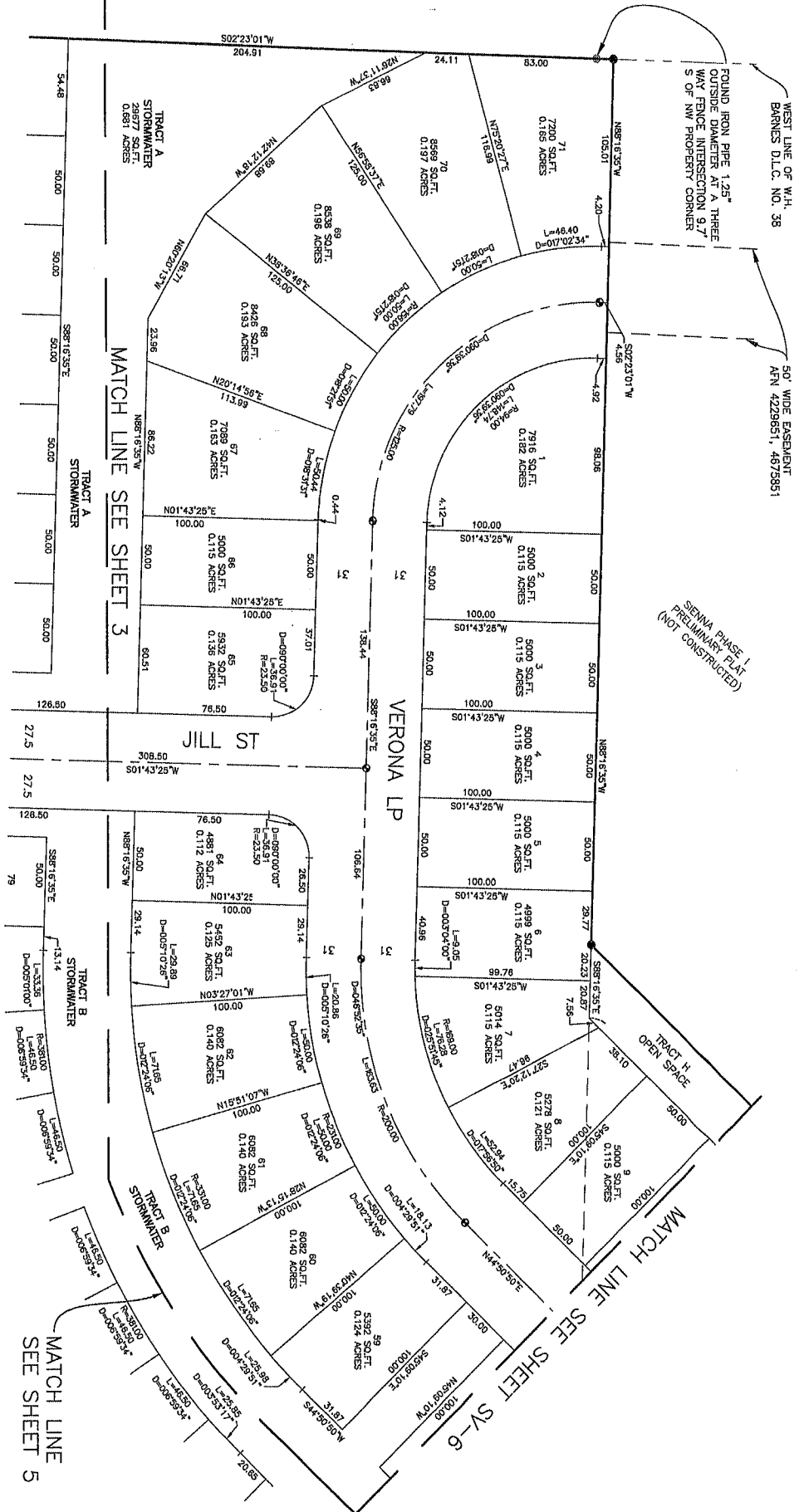
SHEET 1	TITLE SHEET
SHEET 2	PLAY OVERALL, DATUM, LEGEND, SURVEY NOTES
SHEET 3	PLAY MAP LOT 1-29-82, 118-130
SHEET 4	PLAY MAP LOT 1-59-71
SHEET 5	PLAY MAP LOT 83-92, 101-117
SHEET 6	PLAY MAP LOT 11-17, 53-56, 94-100
SHEET 7	PLAY MAP LOT 31-44
SHEET 8	PLAY MAP LOT 18-30, 45-52
SHEET 9	ADDRESS



	PROFESSIONAL LAND SURVEYORS 2320 MONTANA RD. SW. STE. 108 TULSA, OKLA. 74106 918.588.1949		
DRAWN BY MTC	DATE 1/20/2023	JOB NUMBER 21-489	
CHECKED BY SEP	SCALE $1" = 40'$	SHEET NUMBER 3 OF 9	

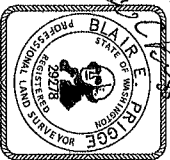
PLAT 4971645 4/9

PLAT OF SIENNA II
A PORTION OF THE BARNES DONATION LAND CLAIM NO. 38.
A PORTION OF THE NW 1/4 OF SE 1/4, NE 1/4 OF SW 1/4, SE 1/4 OF SW 1/4, SW 1/4 OF SW 1/4, AND NW 1/4 OF SW 1/4, SECTION 9, TOWNSHIP 17 NORTH, RANGE 2 WEST, W.M.



SHEET INDEX

SHEET	TITLE SHEET
1	PLAT OVERALL, DATUM, LEGEND, SURVEY NOTES
2	PLAT MAP LOT 1-9, 59-71
3	PLAT MAP LOT 72-82, 118-130
4	PLAT MAP LOT 83-93, 101-117
5	PLAT MAP LOT 94-100
6	PLAT MAP LOT 101-117
7	PLAT MAP LOT 118-130
8	ADDRESS
9	ADDRESS



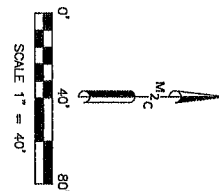
MTN COAST LLC
PROFESSIONAL LAND SURVEYORS 2320 NOTMAN RD SW, STE 106
TUMWATER, WA 98512
360.888.1948

DATE	1/20/2023	JOB NUMBER	21-489
CHECKED BY	MJC	SCALE	1" = 40'
SEP		SHEET NUMBER	4 OF 9

PLAT 4971645 5/9

PLAT OF SIENNA II

A PORTION OF THE BARNES DONATION LAND CLAIM NO. 35.
A PORTION OF THE NW 1/4 OF SE 1/4, NE 1/4 OF SW 1/4, SE 1/4 OF SW 1/4, SW 1/4 OF SW 1/4, AND NW 1/4 OF SW 1/4, SECTION 9, TOWNSHIP 17 NORTH, RANGE 2 WEST, W.A.



MATCH LINE
SEE SHEET 4

MATCH LINE SEE SHEET 3

MATCH LINE SEE SHEET 6

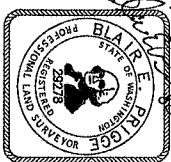
MATCH LINE
SEE SHEET 6

MATCH LINE SEE SHEET 2

UNPLATTED

SHEET INDEX

SHEET	TITLE
1	OVERALL DATA, LEGEND, SURVEY NOTES
2	PLAT MAP LOT 1-9, 59-71
3	PLAT MAP LOT 10-17, 53-58, 94-100
4	PLAT MAP LOT 18-30, 45-52
5	ADDRESS

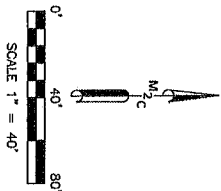


PROFESSIONAL LAND SURVEYORS 2320 NOTTMAN RD SW, STE 106
TUMACACI, WA 98512
360.698.1949

DRAWN BY	DATE	JOB NUMBER
WNC	1/20/2023	21-469
CHECKED BY	SCALE	SHEET NUMBER
SEP	1" = 40'	5 OF 9

PLAT 4971645

6/9

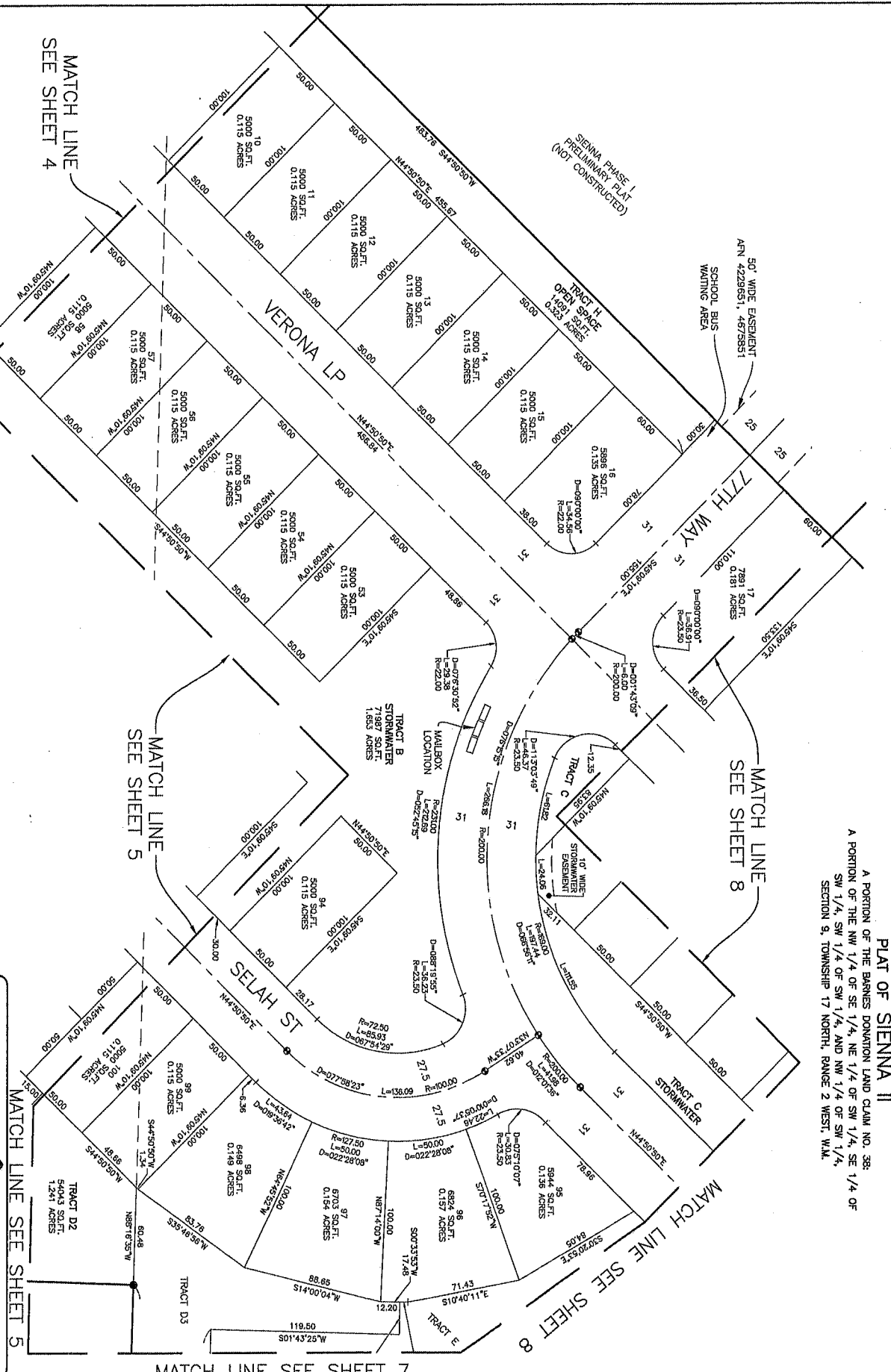


MATCH LINE
SEE SHEET 4

SHEET INDEX	
SHEET 1	TITLE SHEET
SHEET 2	PLAT OVERALL, DATUM, LEGEND, SURVEY NOTES
SHEET 3	PLAT MAP LOT 72-82, 118-130
SHEET 4	PLAT MAP LOT 1-9, 59-71
SHEET 5	PLAT MAP LOT 83-93, 101-117
SHEET 6	PLAT MAP LOT 10-17, 53-58, 94-100
SHEET 7	PLAT MAP LOT 31-44
SHEET 8	PLAT MAP LOT 18-30, 45-52
SHEET 9	ADDRESS



DRAWN BY MTC		DATE 1/20/2023		JOB NUMBER 21-465	
CHECKED BY SEP		SCALE 1" = 40'		SHEET NUMBER 6 OF 9	
PROFESSIONAL LAND SURVEYORS 3220 LANTHAN RD SW, STE 106 TUMWATER, WA 98512 360.888.1949 MTN 2 COAST LLC					



PLAT OF SIENNA II
A PORTION OF THE BARNES DONATION LAND CLAIM NO. 38:
SW 1/4, SW 1/4 OF SW 1/4, NE 1/4 OF SW 1/4, SE 1/4 OF
SW 1/4, SW 1/4 OF SW 1/4, AND NW 1/4 OF SW 1/4,
SECTION 9, TOWNSHIP 17 NORTH, RANGE 2 WEST, W.M.

PLAT 4971645 7/9

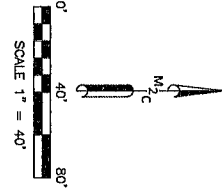
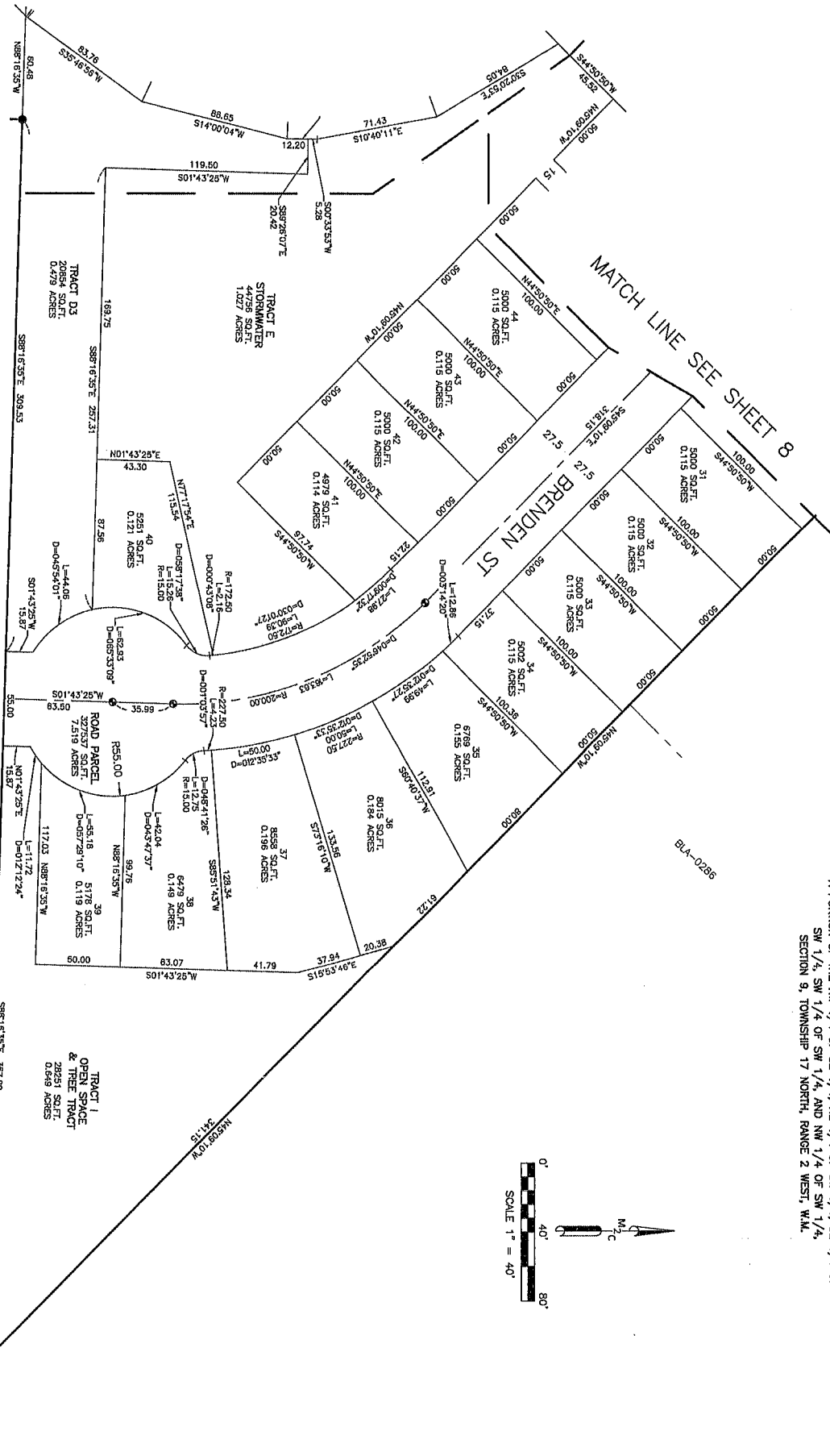
MATCH LINE
SEE SHEET 6

MATCH LINE SEE SHEET 8

SHEET INDEX

SHEET 1	TITLE SHEET
SHEET 2	PLAT OVERALL, DATUM, LEGEND, SURVEY NOTES
SHEET 3	PLAT MAP LOT 72-82, 118-130
SHEET 4	PLAT MAP LOT 1-9, 39-71
SHEET 5	PLAT MAP LOT 83-93, 101-117
SHEET 6	PLAT MAP LOT 10-17, 53-58, 94-100
SHEET 7	PLAT MAP LOT 18-30, 45-52
SHEET 8	ADDRESS
SHEET 9	

UNPLATTED



PLAT OF SIENNA II

A PORTION OF THE BARNES DONATION LAND CLAIM NO. 38:
A PORTION OF THE NW 1/4 OF SE 1/4, NE 1/4 OF SW 1/4, SE 1/4 OF
SW 1/4, SW 1/4 OF SW 1/4, AND NW 1/4 OF SW 1/4,
SECTION 9, TOWNSHIP 17 NORTH, RANGE 2 WEST, W.M.

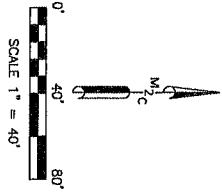


MTN2COAST, LLC

PROFESSIONAL LAND SURVEYORS 2320 MONTANA RD SW, STE 106
TUMWATER WA 98512
360.683.1949

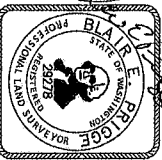
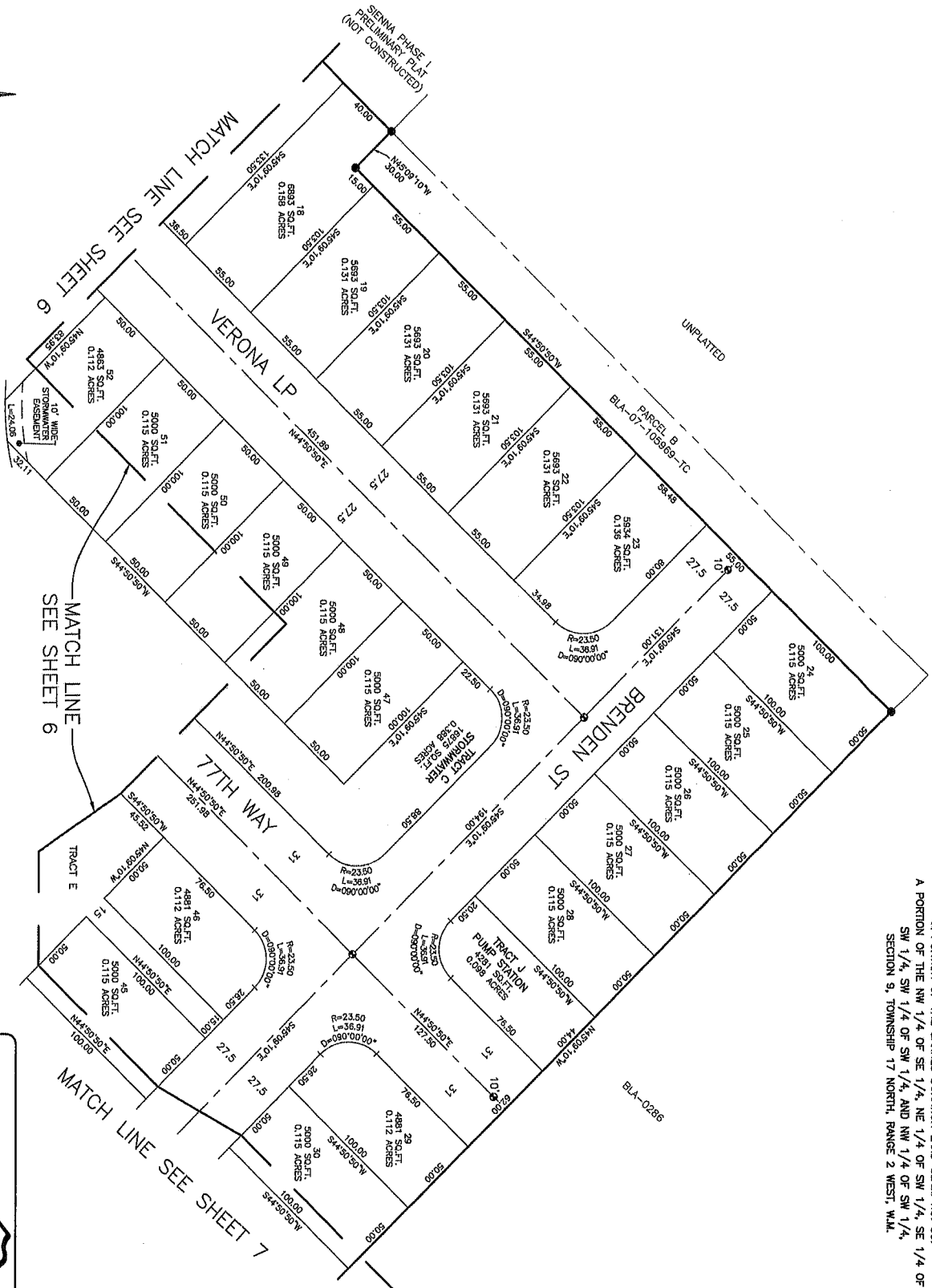
DRAWN BY	DATE	JOB NUMBER
MTC	1/20/2023	21-489
CHECKED BY	SCALE	SHEET NUMBER
SPP	1" = 40'	7 OF 9

PLAT 4971645 8/9



SHEET INDEX

SHEET	TITLE
SHEET 1	PLAT OVERALL, DATUM, LEGEND, SURVEY NOTES
SHEET 2	PLAT MAP LOT 72-82, 118-130
SHEET 3	PLAT MAP LOT 1-9, 39-71
SHEET 4	PLAT MAP LOT 83-93, 101-117
SHEET 5	PLAT MAP LOT 10-11, 53-66, 94-100
SHEET 6	PLAT MAP LOT 18-30, 45-52
SHEET 7	
SHEET 8	
SHEET 9	



MTN 2 COAST LLC PROFESSIONAL LAND SURVEYORS 2320 MOTTMAN RD SW, STE 106 TUMWATER, WA 98512 360.688.1949	
DRAWN BY MJC	DATE 02/20/2023
CHECKED BY SEP	SCALE 1" = 40'
JOB NUMBER 21489	
SHEET NUMBER 8 OF 9	

PLAT OF SIENNA II

A PORTION OF THE BARNES DONATION LAND CLAIM NO. 38:
 A PORTION OF THE NW 1/4 OF SE 1/4, NE 1/4 OF SW 1/4, SE 1/4 OF
 SW 1/4, SW 1/4 OF SW 1/4, AND NW 1/4 OF SW 1/4,
 SECTION 9, TOWNSHIP 17 NORTH, RANGE 2 WEST, W.M.

PLAT 4971645

9/9

PLAT OF SIENNA II
 A PORTION OF THE BARNES DONATION LAND CLAIM NO. 38:
 A PORTION OF THE NW 1/4 OF SE 1/4, NE 1/4 OF SW 1/4, SE 1/4 OF SW 1/4, SW 1/4 OF
 SW 1/4, AND NW 1/4 OF SW 1/4, SECTION 9, TOWNSHIP 17 NORTH, RANGE 2 WEST, W.M.

LOT NO.	ADDRESS	STREET NAME (OLYMPIA, WA 98512)
1	7923	VERONA LP SW
2	7919	VERONA LP SW
3	7915	VERONA LP SW
4	7911	VERONA LP SW
5	7829	VERONA LP SW
6	7825	VERONA LP SW
7	7821	VERONA LP SW
8	7817	VERONA LP SW
9	7809	VERONA LP SW
10	7727	VERONA LP SW
11	7723	VERONA LP SW
12	7719	VERONA LP SW
13	7715	VERONA LP SW
14	7711	VERONA LP SW
15	7707	VERONA LP SW
16	7703	VERONA LP SW
17	7695	VERONA LP SW
18	7691	VERONA LP SW
19	7687	VERONA LP SW
20	7693	VERONA LP SW
21	7619	VERONA LP SW
22	7615	VERONA LP SW
23	7611	VERONA LP SW
24	7608	BRENDEN ST SW
25	7612	BRENDEN ST SW
26	7616	BRENDEN ST SW
27	7622	BRENDEN ST SW
28	7626	BRENDEN ST SW
29	7702	BRENDEN ST SW
30	7706	BRENDEN ST SW
31	7710	BRENDEN ST SW
32	7714	BRENDEN ST SW
33	7718	BRENDEN ST SW
34	7722	BRENDEN ST SW
35	7726	BRENDEN ST SW
36	7730	BRENDEN ST SW
37	7734	BRENDEN ST SW
38	7738	BRENDEN ST SW
39	7742	BRENDEN ST SW
40	7746	BRENDEN ST SW
41	7750	BRENDEN ST SW
42	7754	BRENDEN ST SW
43	7758	BRENDEN ST SW
44	7762	BRENDEN ST SW
45	7766	BRENDEN ST SW
46	7770	BRENDEN ST SW

LOT NO.	ADDRESS	STREET NAME (OLYMPIA, WA 98512)
47	7614	VERONA LP SW
48	7620	VERONA LP SW
49	7624	VERONA LP SW
50	7628	VERONA LP SW
51	7632	VERONA LP SW
52	7636	VERONA LP SW
53	7706	VERONA LP SW
54	7710	VERONA LP SW
55	7714	VERONA LP SW
56	7720	VERONA LP SW
57	7724	VERONA LP SW
58	7728	VERONA LP SW
59	7810	VERONA LP SW
60	7814	VERONA LP SW
61	7818	VERONA LP SW
62	7822	VERONA LP SW
63	7826	VERONA LP SW
64	7830	VERONA LP SW
65	7910	VERONA LP SW
66	7914	VERONA LP SW
67	7918	VERONA LP SW
68	7922	VERONA LP SW
69	7926	VERONA LP SW
70	7930	VERONA LP SW
71	7934	VERONA LP SW
72	7938	SEAH ST SW
73	7929	SEAH ST SW
74	7925	SEAH ST SW
75	7921	SEAH ST SW
76	7917	SEAH ST SW
77	7913	SEAH ST SW
78	7909	SEAH ST SW
79	7847	SEAH ST SW
80	7841	SEAH ST SW
81	7837	SEAH ST SW
82	7831	SEAH ST SW
83	7823	SEAH ST SW
84	7819	SEAH ST SW
85	7811	SEAH ST SW
86	7807	SEAH ST SW
87	7749	SEAH ST SW
88	7745	SEAH ST SW
89	7741	SEAH ST SW
90	7737	SEAH ST SW
91	7733	SEAH ST SW
92	7729	SEAH ST SW
93	7725	SEAH ST SW
94	7721	SEAH ST SW
95	7704	SEAH ST SW
96	7708	SEAH ST SW
97	7712	SEAH ST SW
98	7716	SEAH ST SW
99	7718	SEAH ST SW
100	7722	SEAH ST SW

LOT NO.	ADDRESS	STREET NAME (OLYMPIA, WA 98512)
101	8002	KATHIE CT SW
102	8006	KATHIE CT SW
103	8010	KATHIE CT SW
104	8014	KATHIE CT SW
105	8019	KATHIE CT SW
106	8015	KATHIE CT SW
107	8011	KATHIE CT SW
108	8007	KATHIE CT SW
109	8003	KATHIE CT SW
110	8018	SABELLE ST SW
111	8024	SABELLE ST SW
112	8030	SABELLE ST SW
113	7808	SEAH ST SW
114	7812	SEAH ST SW
115	7816	SEAH ST SW
116	7820	SEAH ST SW
117	7824	SEAH ST SW
118	7832	SEAH ST SW
119	7834	SEAH ST SW
120	7838	SEAH ST SW
121	7842	SEAH ST SW
122	7848	SEAH ST SW
123	7904	SEAH ST SW
124	7908	SEAH ST SW
125	7912	SEAH ST SW
126	7916	SEAH ST SW
127	7920	SEAH ST SW
128	8091	DAGWY ST SW
129	8097	DAGWY ST SW
130	8043	DAGWY ST SW

SHEET INDEX	
SHEET 1	TITLE SHEET
SHEET 2	PLAY OVERALL, DATUM, LEGEND, SURVEY NOTES
SHEET 3	PLAY MAP LOT 1-130
SHEET 4	PLAY MAP LOT 131-260
SHEET 5	PLAY MAP LOT 261-390
SHEET 6	PLAY MAP LOT 391-520
SHEET 7	PLAY MAP LOT 521-650
SHEET 8	PLAY MAP LOT 651-780
SHEET 9	PLAY MAP LOT 781-910



PROFESSIONAL LAND SURVEYOR 28278 MORTON RD SW, STE 106
 TUMWATER, WA 98512
 360.688.1949



DESIGNED BY	DATE	JOB NUMBER
MTC	11/20/2023	21-469
CHECKED BY	SCALE	SHEET NUMBER
SBP	N/A	9 OF 9

