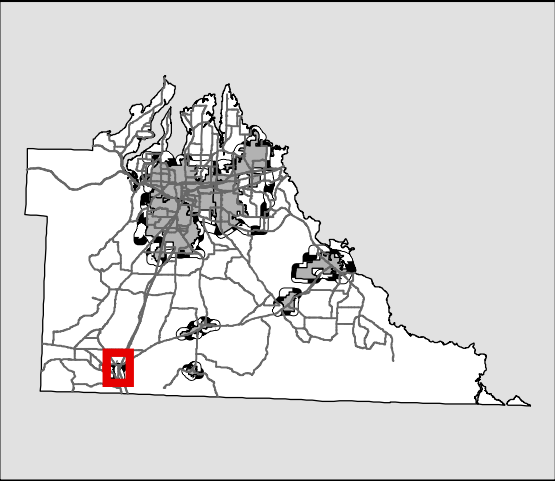


Pictometry International Corp.



## Grand Mound - Proposed Zoning

- Land Use Amendments
- Land Use Amendment w/ UGA Expansion Requests
- Urban Growth Area (UGA)
- Zoning**
- RCC
  - LTA
  - Long-Term Agriculture
  - RL 1/1
  - Residential LAMIRD - 1 Unit Per 1 Acre
  - RRR 1/5
  - Rural Residential/Resource - 1 Unit Per 5 Acres

- Grand Mound Zoning**
- AC
  - Arterial Commercial
  - LI
  - Light Industrial
  - PI
  - Planned Industrial Park
  - R 3-6/1
  - Residential - 3-6 Units Per 1 Acre
  - R 4-16/1
  - Residential - 4-16 Units Per 1 Acre

The information included on this map has been compiled by Thurston County staff from a variety of sources and is subject to change without notice. Additional elements may be present in reality that are not represented on the map. Ortho-photos and other data may not align. The boundaries depicted by these datasets are approximate. This document is not intended for use as a survey product.

ALL DATA IS EXPRESSLY PROVIDED 'AS IS' AND 'WITH ALL FAULTS'. Thurston County makes no representations or warranties, express or implied, as to accuracy, completeness, timeliness, or rights to the use of such information. In no event shall Thurston County be liable for direct, indirect, incidental, consequential, special, or tort damages of any kind, including, but not limited to, lost revenues or lost profits, real or anticipated, resulting from the use, misuse or reliance of the information contained on this map. If any portion of this map or disclaimer is missing or altered, Thurston County removes itself from all responsibility from the map and the data contained within. The burden for determining fitness for use lies entirely with the user and the user is solely responsible for understanding the accuracy limitation of the information contained in this map.

