
WELCOME TO THE PLANNING COMMISSION

AMELIA SCHWARTZ, ASSOCIATE PLANNER

JANUARY 2023



Today's Presentation



Introduction to the Planning Commission (PC)



How to use the PC Binder

Background



10-person commission made up of volunteers



1st and 3rd Wednesday of each month, 6:30PM



Reviews land use and environmental policies as assigned by the BoCC



Provide recommendations on docketed items to the BoCC

Roles of a Commissioner

LISTEN TO AND SOLICIT PUBLIC INPUT ON LAND USE MATTERS

REPRESENT AND INTERPRET COMMUNITY NEEDS AND OPINIONS

PREPARE FOR MEETINGS BY REVIEWING THE AGENDA AND OTHER DOCUMENTS TO BE DISCUSSED

LISTEN TO STAFF ANALYSIS AND PUBLIC INPUT TO DRAFT AN ADVISORY RECOMMENDATION TO THE BOCC

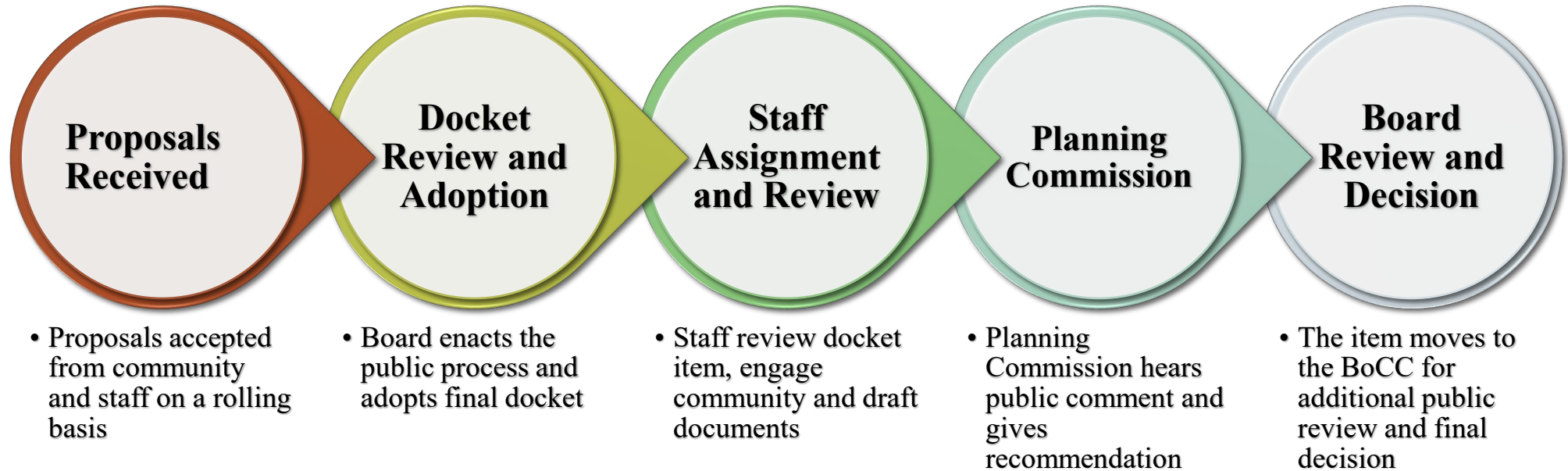
REFLECT THE CONSENSUS OF A MAJORITY OF MEMBERS

REQUEST ADDITIONAL INFORMATION OR SUGGEST CHANGES COLLECTIVELY, RATHER THAN INDIVIDUALLY

BRING ANY RELEVANT QUESTIONS OR IDEAS TO WORK SESSIONS

PROVIDE RECOMMENDATIONS TO STAFF, BUT NOT DIRECT STAFF DUTIES

The Planning Process

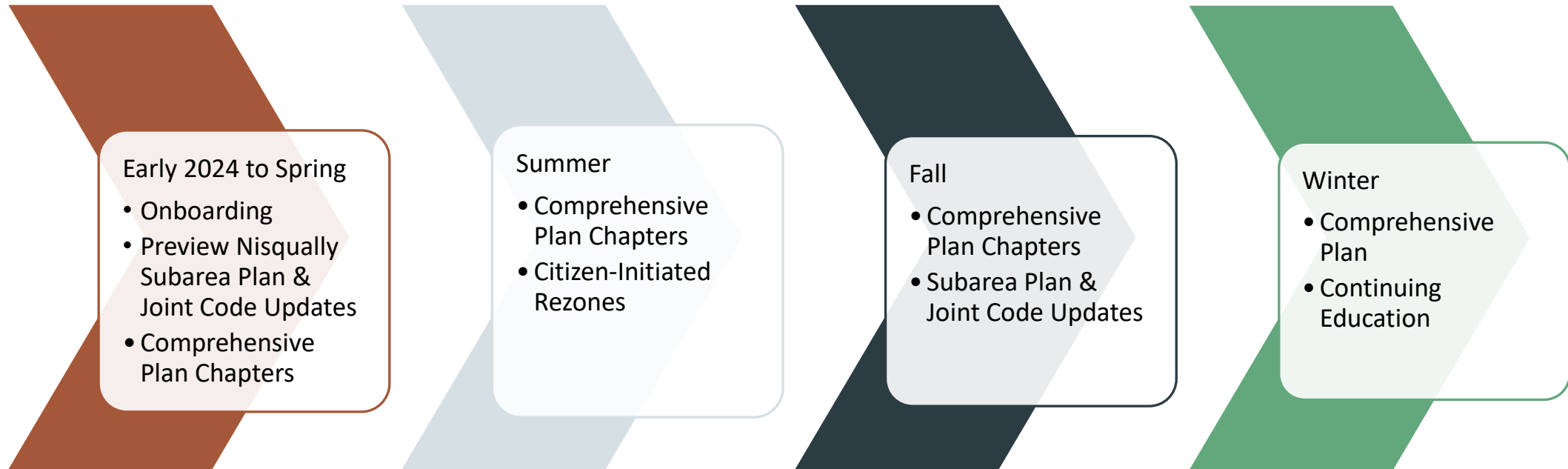


2023 PC Successes

Recommendations reached on:

- Grand Mound
- Pogue Rezone Requests
- Yelm Joint Plan
- Lacey Joint Plan
- Olympia Joint Plan
- Wireless Code
- Agricultural CAO
- Code Clarifications and Corrections
- Forest Lands Conversion
- Long-Term Agriculture Zoning and Code Updates
- Capital Improvement Plan

Preliminary 2024 Schedule



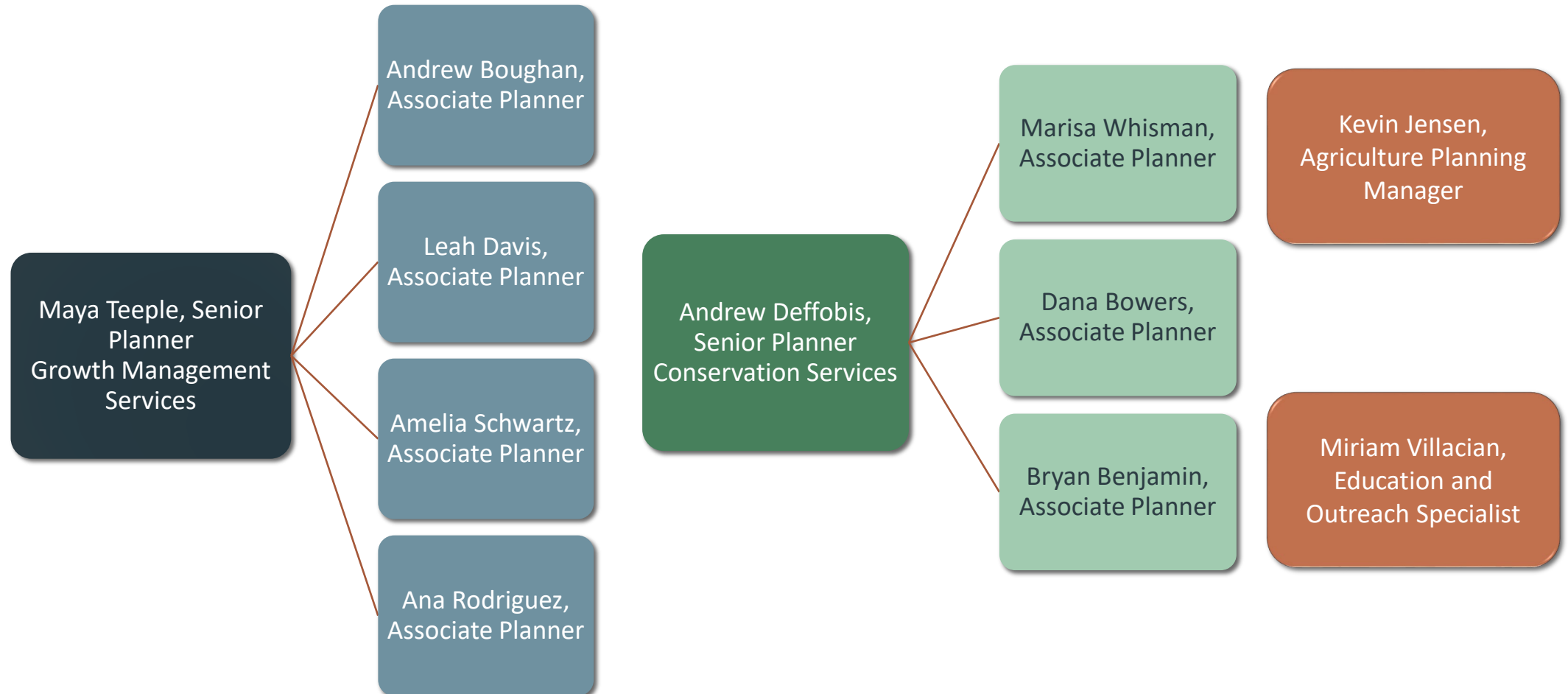
Meet the Commission Activity

- Each member should have marked a special location on the County map when they came in
- One commissioner at a time, introduce yourself, tell us your reason for joining the commission, and share your story for what that location means to you

Meet the Staff



Meet the Staff





The Binder

- The PC binder is a new resource for commissioners
- Reference the binder for basics on the Planning Commission, making motions, commission rules, Comprehensive Plan chapters, and more
- Binders will be stored at the County, but resources are available online

Binder Contents

MEETING MINUTES AND MATERIALS

INTRODUCTION TO THE PLANNING COMMISSION

RULES OF PROCEDURE

CITIZEN ADVISORY BOARDS HANDBOOK

ROBERT'S RULES OF ORDER

PLANNING DOCUMENTS GUIDE

COMPREHENSIVE PLAN CHAPTERS

AMELIA SCHWARTZ,
ASSOCIATE PLANNER

Thank You!