

INADVERTENT DISCOVERY PLAN

PLAN AND PROCEDURES FOR THE DISCOVERY OF CULTURAL RESOURCES AND HUMAN SKELETAL REMAINS

Site Name(s): Inspiring Kids Preserve Location: 5323 Johnson Point Rd NE, Olympia

Project Lead/Organization: Capitol Land Trust County: Thurston

If this Inadvertent Discovery Plan (IDP) is for multiple (batched) projects, ensure the location information covers all project areas.

1. INTRODUCTION

The IDP outlines procedures to perform in the event of a discovery of archaeological materials or human remains, in accordance with applicable state and federal laws. An IDP is required, as part of Agency Terms and Conditions for all grants and loans, for any project that creates disturbance above or below the ground. An IDP is not a substitute for a formal cultural resource review (Executive 21-02 or Section 106).

Once completed, **the IDP should always be kept at the project site** during all project activities. All staff, contractors, and volunteers should be familiar with its contents and know where to find it.

2. CULTURAL RESOURCE DISCOVERIES

A cultural resource discovery could be prehistoric or historic. Examples include (see images for further examples):

- An accumulation of shell, burned rocks, or other food related materials.
- Bones, intact or in small pieces.
- An area of charcoal or very dark stained soil with artifacts.
- Stone tools or waste flakes (for example, an arrowhead or stone chips).
- Modified or stripped trees, often cedar or aspen, or other modified natural features, such as rock drawings.
- Agricultural or logging materials that appear older than 50 years. These could include equipment, fencing, canals, spillways, chutes, derelict sawmills, tools, and many other items.
- Clusters of tin cans or bottles, or other debris that appear older than 50 years.
- Old munitions casings. ***Always assume these are live and never touch or move.***
- Buried railroad tracks, decking, foundations, or other industrial materials.
- Remnants of homesteading. These could include bricks, nails, household items, toys, food containers, and other items associated with homes or farming sites.

The above list does not cover every possible cultural resource. When in doubt, assume the material is a cultural resource.

3. ON-SITE RESPONSIBILITIES

If any employee, contractor, or subcontractor believes that they have uncovered cultural resources or human remains at any point in the project, take the following steps to ***Stop-Protect-Notify***. If you suspect that the discovery includes human remains, also follow Sections 5 and 6.

STEP A: Stop Work.

All work must stop immediately in the vicinity of the discovery.

STEP B: Protect the Discovery.

Leave the discovery and the surrounding area untouched and create a clear, identifiable, and wide boundary (30 feet or larger) with temporary fencing, flagging, stakes, or other clear markings. Provide protection and ensure integrity of the discovery until cleared by the Department of Archaeological and Historical Preservation (DAHP) or a licensed, professional archaeologist.

Do not permit vehicles, equipment, or unauthorized personnel to traverse the discovery site. Do not allow work to resume within the boundary until the requirements of this IDP are met.

STEP C: Notify Project Archaeologist (if applicable).

If the project has an archaeologist, notify that person. If there is a monitoring plan in place, the archaeologist will follow the outlined procedure.

STEP D: Notify Project contacts.

Project Lead Contacts

Primary Contact

Name: Laurence Reeves
Organization: Capitol Land Trust
Phone: 360-943-3012 x3
Email: Laurence@capitolandtrust.org

Alternate Contact

Name: Kristen Keller
Organization: Capitol Land Trust
Phone: 360-943-3012
Email: info@capitolandtrust.org

Other Contacts

Name:
Organization:
Phone:
Email:

<input type="text"/>
<input type="text"/>
<input type="text"/>
<input type="text"/>

STEP E: Notify DAHP.

Once notified, the Project Lead/Organization will contact DAHP.

DAHP will provide the steps to assist with identification. DAHP and Tribal representatives may coordinate a site visit following any necessary safety protocols. DAHP may also inform the Project Lead/Organization of additional steps to further protect the site.

Do not continue work until DAHP has issued an approval for work to proceed in the area of, or near, the discovery.

DAHP Contacts:

Name: Rob Whitlam, PhD
Title: State Archaeologist
Cell: 360-890-2615
Email: Rob.Whitlam@dahp.wa.gov
Main Office: 360-586-3065

Human Remains/Bones:

Name: Guy Tasa, PhD
Title: State Anthropologist
Cell: 360-790-1633 (24/7)
Email: Guy.Tasa@dahp.wa.gov

4. TRIBAL CONTACTS

In the event cultural resources are discovered, the following tribes will be contacted. See Section 10 for Additional Resources.

Tribes:	Confederated Tribes of the Chehalis Reservation	Tribes:	Squaxin Island Tribe
Name:	Dan Penn	Name:	Shaun Dinubilo
Title:	THPO	Title:	THPO
Phone:	360-279-1747	Phone:	360-870-6324
Email:	dpenn@chehalis tribe.org	Email:	sdinubilo@squaxin.us
Tribes:	Quinault Indian Nation	Tribes:	Nisqually Tribe
Name:	Naomi Brandenfels	Name:	Brad Beach
Title:	THPO	Title:	THPO
Phone:	503-351-9397	Phone:	360-456-5221
Email:	naomi.brandenfels@quinault.org	Email:	beach.brad@nisqually-nsn.gov

Please provide contact information for additional tribes within your project area, if needed, in Section 11.

5. FURTHER CONTACTS (if applicable)

If the discovery is confirmed by DAHP as a cultural or archaeological resource, or as human remains, and there is a partnering federal or state agency, the Project Lead/Organization will ensure the partnering agency is immediately notified.

Federal Agency:

Agency:	U.S. Army Corps of Engineers
Name:	Lance Lundquist
Title:	Cultural Resources Program Manager
Phone:	206-764-6909
Email:	lance.a.lundquist@usace.army.mil

State Agency:

Agency:	Recreation and Conservation Office
Name:	Sarah Thirtyacre
Title:	Cultural Resources Program Coordinator
Phone:	360-764-9841
Email:	sarah.thirtyacre@rco.wa.gov

6. SPECIAL PROCEDURES FOR THE DISCOVERY OF HUMAN SKELETAL MATERIAL

Any human skeletal remains, regardless of antiquity or ethnic origin, will at all times be treated with dignity and respect. Follow the steps under ***Stop-Protect-Notify***. For specific instructions on how to handle a human remains discovery, see: [RCW 68.50.645: Skeletal human remains—Duty to notify—Ground disturbing activities—Coroner determination—Definitions](#).

Suggestion: If you are unsure whether the discovery is human bone or not, contact Guy Tasa with DAHP, for identification and next steps. Do not pick up the discovery.

Guy Tasa, PhD State Physical Anthropologist

Guy.Tasa@dahp.wa.gov

(360) 790-1633 (Cell/Office)

For discoveries that are confirmed or suspected human remains, follow these steps:

1. Notify law enforcement and the Medical Examiner/Coroner using the contacts below. **Do not call 911** unless it is the only number available to you.

Enter contact information below (required):

- Local Medical Examiner or Coroner name and phone:

Gary Warnock (360) 867-2140

- Local Law Enforcement main name and phone:

Thurston County Sheriff's Office 360-786-5500

- Local Non-Emergency phone number (911 if without a non-emergency number):

360-704-2740 (after hours)

2. The Medical Examiner/Coroner (with assistance of law enforcement personnel) will determine if the remains are human or if the discovery site constitutes a crime scene and will notify DAHP.
3. **DO NOT speak with the media, allow photography or disturbance of the remains, or release any information about the discovery on social media.**
4. If the remains are determined to be non-forensic, Cover the remains with a tarp or other materials (not soil or rocks) for temporary protection and to shield them from being photographed by others or disturbed.

Further activities:

- Per [RCW 27.44.055](#), [RCW 68.50](#), and [RCW 68.60](#), DAHP will have jurisdiction over non-forensic human remains. Other organizations may also participate in consultation.
- Documentation of human skeletal remains and funerary objects will be agreed upon through the consultation process described in [RCW 27.44.055](#), [RCW 68.50](#), and [RCW 68.60](#).
- When consultation and documentation activities are complete, work in the discovery area may resume as described in Section 8.

If the project occurs on federal lands (such as a national forest or park or a military reservation) the provisions of the Native American Graves Protection and Repatriation Act of 1990 (NAGPRA) apply and the responsible federal agency will follow its provisions. Note that state highways that cross federal lands are on an easement and are not owned by the state.

If the project occurs on non-federal lands, the Project Lead/Organization will comply with applicable state and federal laws, and the above protocol.

7. DOCUMENTATION OF ARCHAEOLOGICAL MATERIALS

Archaeological resources discovered during construction are protected by state law [RCW 27.53](#) and assumed eligible for inclusion in the National Register of Historic Places under Criterion D until a formal Determination of Eligibility is made.

The Project Lead/Organization must ensure that proper documentation and field assessment are made of all discovered cultural resources in cooperation with all parties: the federal agencies (if any), DAHP, affected tribes, and the archaeologist.

The archaeologist will record all prehistoric and historic cultural material discovered during project construction on a standard DAHP archaeological site or isolate inventory form. They will photograph site overviews, features, and artifacts and prepare stratigraphic profiles and soil/sediment descriptions for minimal subsurface exposures. They will document discovery locations on scaled site plans and site location maps.

Cultural features, horizons, and artifacts detected in buried sediments may require the archaeologist to conduct further evaluation using hand-dug test units. They will excavate units in a controlled fashion to expose features, collect samples from undisturbed contexts, or to interpret complex stratigraphy. They may also use a test unit or trench excavation to determine if an intact occupation surface is present. They will only use test units when necessary to gather information on the nature, extent, and integrity of subsurface cultural deposits to evaluate the site's significance. They will conduct excavations using standard archaeological techniques to precisely document the location of cultural deposits, artifacts, and features.

The archaeologist will record spatial information, depth of excavation levels, natural and cultural stratigraphy, presence or absence of cultural material, and depth to sterile soil, regolith, or bedrock for each unit on a standard form. They will complete test excavation unit level forms, which will include plan maps for each excavation level and artifact counts and material types, number, and vertical provenience (depth below

surface and stratum association where applicable) for all recovered artifacts. They will draw a stratigraphic profile for at least one wall of each test excavation unit.

The archaeologist will screen sediments excavated for purposes of cultural resources investigation through 1/8-inch mesh, unless soil conditions warrant 1/4-inch mesh.

The archaeologist will analyze, catalogue, and temporarily curate all prehistoric and historic artifacts collected from the surface and from probes and excavation units. The ultimate disposition of cultural materials will be determined in consultation with the federal agencies (if any), DAHP and the affected tribe(s).

Within 90 days of concluding fieldwork, the archaeologist will provide a technical report describing any and all monitoring and resultant archaeological excavations to the Project Lead/Organization, who will forward the report to the federal agencies (if any), DAHP, and the affected tribe(s) for review and comment.

If assessment activities expose human remains (burials, isolated teeth, or bones), the archaeologist and Project Lead/Organization will follow the process described in **Section 6**.

8. PROCEEDING WITH WORK

The Project Lead/Organization shall work with the archaeologist, DAHP, and affected tribe(s) to determine the appropriate discovery boundary and where work can continue.

Work may continue at the discovery location only after the process outlined in this plan is followed and the Project Lead/Organization, DAHP, any affected tribe(s), and the federal agencies (if any) determine that compliance with state and federal laws is complete.

9. ORGANIZATION RESPONSIBILITY

The Project Lead/Organization is responsible for ensuring:

- This IDP has complete and accurate information.
- This IDP is immediately available to all field staff at the sites and available by request to any party.
- This IDP is implemented to address any discovery at the site.
- That all field staff, contractors, and volunteers are instructed on how to implement this IDP.

10. ADDITIONAL RESOURCES

Informative Video

It is recommended that all project staff, contractors, and volunteers view this informative video explaining the value of IDP protocol and what to do in the event of a discovery. The target audience is anyone working on the project who could unexpectedly find cultural resources or human remains while excavating or digging. The video is also posted on DAHP's inadvertent discovery language website.

[Ecology's IDP Video](https://www.youtube.com/watch?v=ioX-4cXfbDY) (<https://www.youtube.com/watch?v=ioX-4cXfbDY>)

Informational Resources

DAHP (<https://dahp.wa.gov>)

Washington State Archeology (DAHP 2003)

(https://dahp.wa.gov/sites/default/files/Field%20Guide%20to%20WA%20Arch_0.pdf)

[Association of Washington Archaeologists](https://www.archaeologyinwashington.com) (<https://www.archaeologyinwashington.com>)

Potentially Interested Tribes

[Interactive Map of Tribes by Area](#)

(<https://dahp.wa.gov/archaeology/tribal-consultation-information>)

WSDOT Tribal Contact Website

(<https://wsdot.wa.gov/tribal/TribalContacts.htm>)

11. ADDITIONAL INFORMATION

Please add any additional contact information or other information needed within this IDP.

Skokomish Tribe: Kris Miller, 360-490-4034, shlanay1@skokomish.org
Shoalwater Bay Tribe: Earl Davis, 360-267-0731, edavis@shoalwater-nsn.gov
Hoh Tribe: Maria Lopez, 360-780-0533, marial@hohtribe-nsn.org

Implement the IDP if you see...

Chipped stone artifacts.

Examples are:

- Glass-like material.
- Angular material.
- "Unusual" material or shape for the area.
- Regularity of flaking.
- Variability of size.



Stone artifacts from Oregon.



Stone artifacts from Washington.



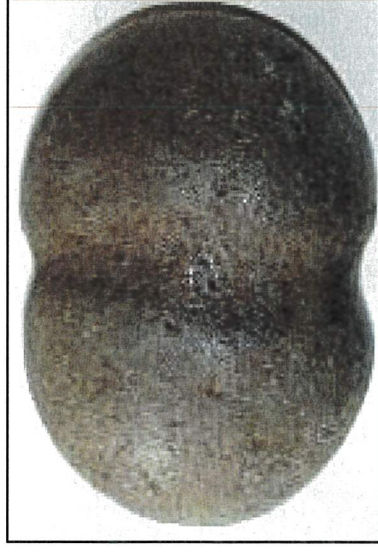
Biface-knife, scraper, or pre-form found in NE Washington. Thought to be a well knapped object of great antiquity. Courtesy of Methow Salmon Rec. Foundation.

Implement the IDP if you see...

Ground stone artifacts.

Examples are:

- Unusual or unnatural shapes or unusual stone.
- Striations or scratching.
- Etching, perforations, or pecking.
- Regularity in modifications.
- Variability of size, function, or complexity.



Above: Fishing Weight - credit [CRITFC Treaty Fishing Rights website](#).



Artifacts from unknown locations (left and right images).

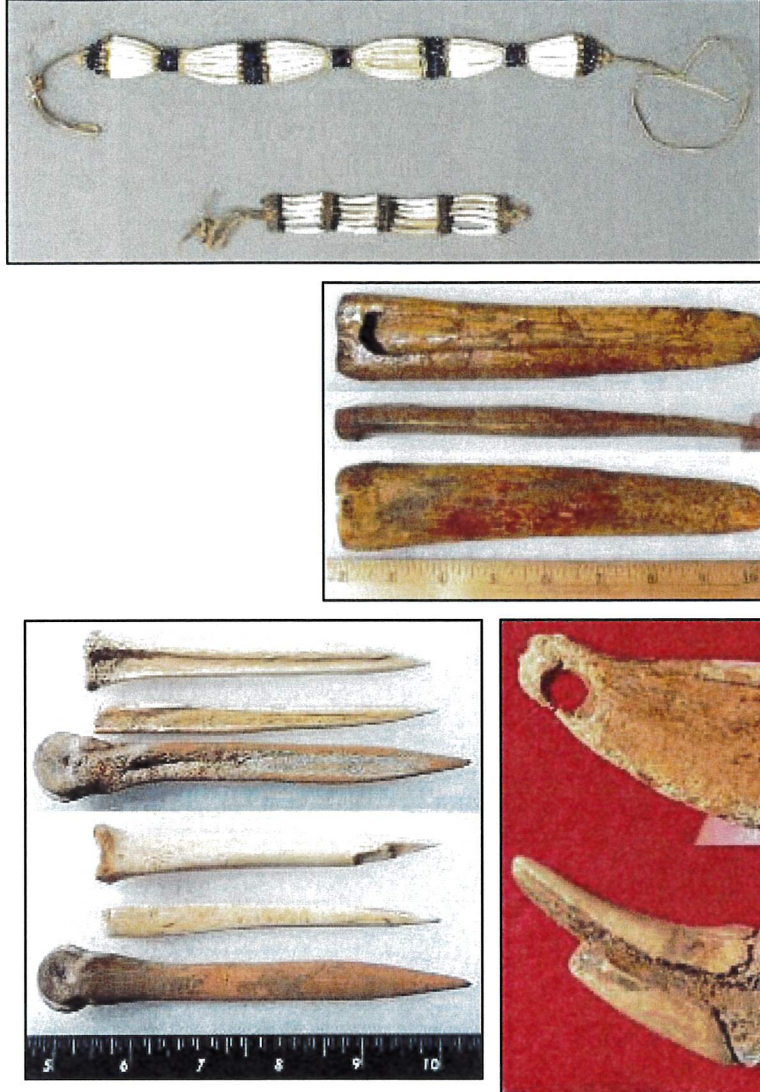


Implement the IDP if you see...

Bone or shell artifacts, tools, or beads.

Examples are:

- Smooth or carved materials.
- Unusual shape.
- Pointed as if used as a tool.
- Wedge shaped like a “shoehorn”.
- Variability of size.
- Beads from shell () or tusk.



Upper Left: Bone Awls from Oregon.

Upper Center: Bone Wedge from California.

Upper Right: Plateau dentalium choker and bracelet, from Nez Perce National Historical Park, 19th century, made using Antalis pretiosa shells Credit: Nez Perce - Nez Perce National Historical Park, NEPE 8762, Public Domain.

Above: Tooth Pendants. Right: Bone Pendants. Both from Oregon and Washington.



Implement the IDP if you see...

Culturally modified trees, fiber, or wood artifacts.

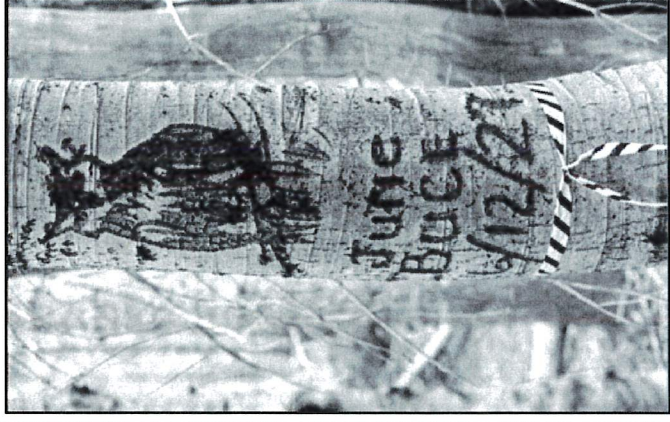
Examples are:

- Trees with bark stripped or peeled, carvings, axe cuts, de-limbing, wood removal, and other human modifications.
- Fiber or wood artifacts in a wet environment.
- Variability of size, function, and complexity.



Left and Below: *Culturally modified tree and an old carving on an aspen tree (Courtesy of DAHP).*

Right, Top to Bottom: *Artifacts from Mud Bay, Olympia: Toy war club, two strand cedar rope, wet basketry.*



Implement the IDP if you see...

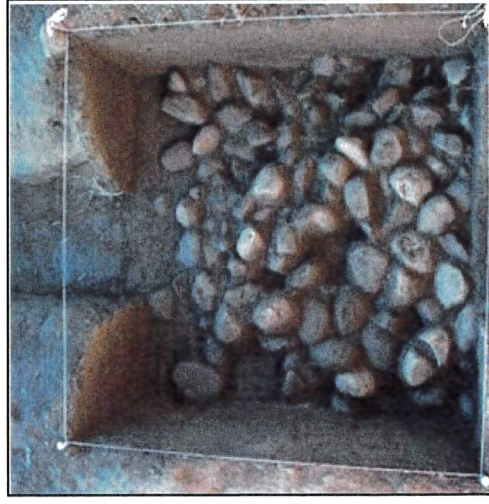
Strange, different, or interesting looking dirt, rocks, or shells.

Human activities leave traces in the ground that may or may not have artifacts associated with them. Examples are:

- “Unusual” accumulations of rock (especially fire-cracked rock).
- “Unusual” shaped accumulations of rock (such as a shape similar to a fire ring).
- Charcoal or charcoal-stained soils, burnt-looking soils, or soil that has a “layer cake” appearance.
- Accumulations of shell, bones, or artifacts. Shells may be crushed.
- Look for the “unusual” or out of place (for example, rock piles in areas with otherwise few rocks).



Shell Midden pocket in modern fill discovered in sewer trench.



Underground oven. Courtesy of DAHP.

Shell midden with fire cracked rock.



Hearth excavated near Hamilton, WA.

Implement the IDP if you see...

Historic period artifacts (historic archaeology considered older than 50 years).

Examples are:

- Agricultural or logging equipment. May include equipment, fencing, canals, spillways, chutes, derelict sawmills, tools, etc.
- Domestic items including square or wire nails, amethyst colored glass, or painted stoneware.



Left: Top to Bottom: Willow pattern serving bowl and slip joint pocket knife discovered during Seattle Smith Cove shantytown (45-KI-1200) excavation.

Right: Collections of historic artifacts discovered during excavations in eastern Washington cities.



Implement the IDP if you see...

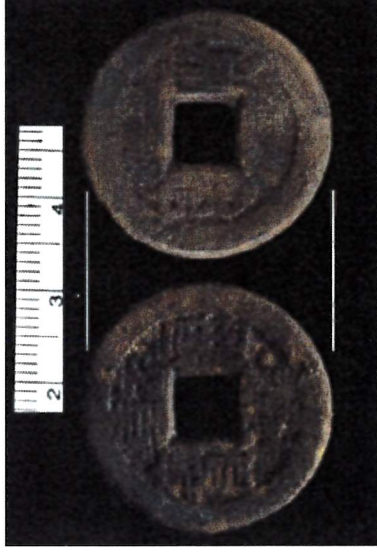
Historic period artifacts (historic archaeology considered older than 50 years).

Examples are:

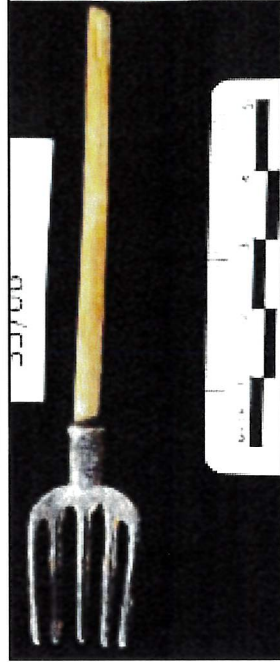
- Railway tokens, coins, and buttons.
- Spectacles, toys, clothing, and personal items.
- Items helping to understand a culture or identity.
- Food containers and dishware.



Main Image: Dishes, bottles, workboot found at the North Shore Japanese bath house (ofuro) site, Courtesy Bob Muckle, Archaeologist, Capilano University, B.C. This is an example of an above ground resource.



Right, from Top to Bottom: Coins, token, spectacles and Montgomery Ward pitchfork toy discovered during Seattle Smith Cove shantytown (45-KI-1200) excavation.



Implement the IDP if you see...

- Old munition casings – if you see ammunition of any type – ***always assume they are live and never touch or move!***
- Tin cans or glass bottles with an older manufacturer's technique – maker's mark, distinct colors such as turquoise, or an older method of opening the container.

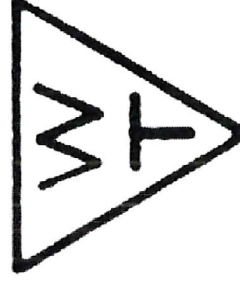


Far Left: .303 British cartridge found by a WCC planting crew on Skagit River. Don't ever touch something like this!
Left: Maker's mark on bottom of old bottle.

Right: Old beer can found in Oregon. ACME was owned by Olympia Brewery. Courtesy of Heather Simmons.



Logo employed by Whithall Tatum & Co. between 1924 to 1938 (Lockhart et al. 2016).



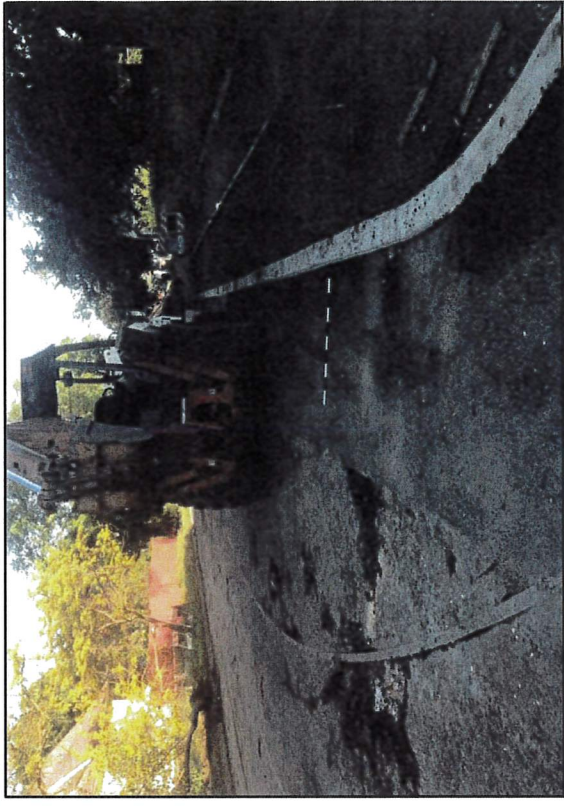
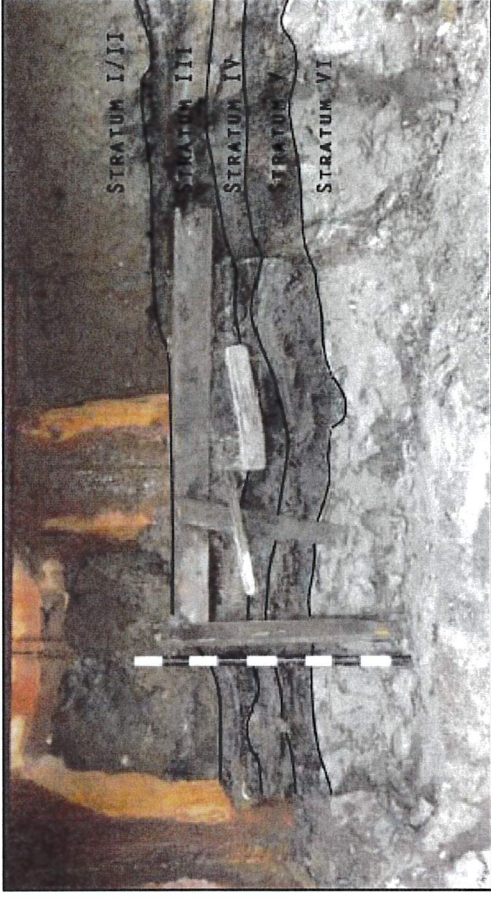
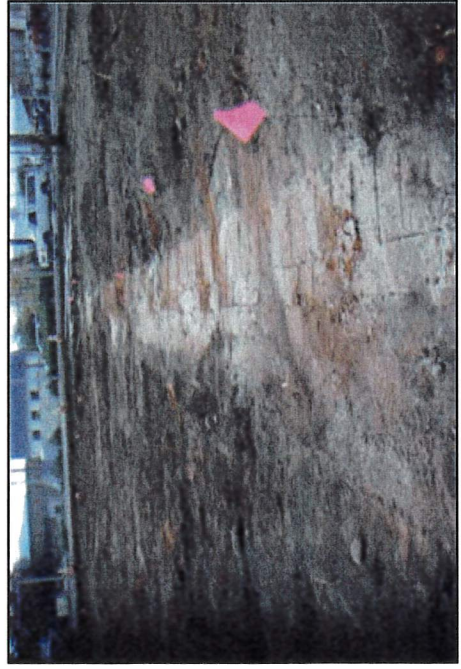
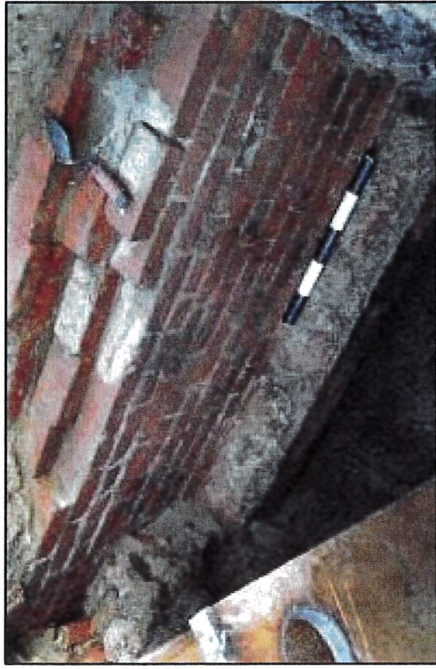
Can opening dates, courtesy of W.M. Schroeder.

Implement the IDP if you see...

You see historic foundations or buried structures.

Examples are:

- Foundations.
- Railroad and trolley tracks.
- Remnants of structures.



Counter Clockwise, Left to Right: Historic structure 45K1924, in WSDOT right of way for SR99 tunnel. Remnants of Smith Cove shantytown (45-KI-1200) discovered during Ecology CSO excavation, City of Spokane historic trolley tracks uncovered during stormwater project, intact foundation of historic home that survived the Great Ellensburg Fire of July 4, 1889, uncovered beneath parking lot in Ellensburg.

Implement the IDP if you see...

Potential human remains.

Examples are:

- Grave headstones that appear to be older than 50 years.
- Bones or bone tools--intact or in small pieces. It can be difficult to differentiate animal from human so they must be identified by an expert.
- These are all examples of animal bones and are not human.

Center: Bone wedge tool, courtesy of Smith Cove Shantytown excavation (45K1200).

Other images (Top Right, Bottom Left, and Bottom) Center: Courtesy of DAHP.



Directly Above: This is a real discovery at an Ecology sewer project site.
What would you do if you found these items at a site? Who would be the first person you would call?
Hint: Read the plan!

