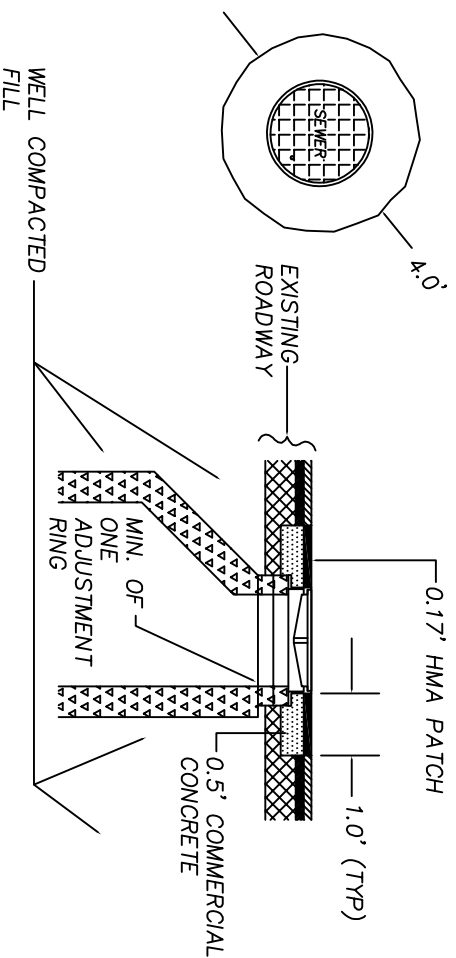
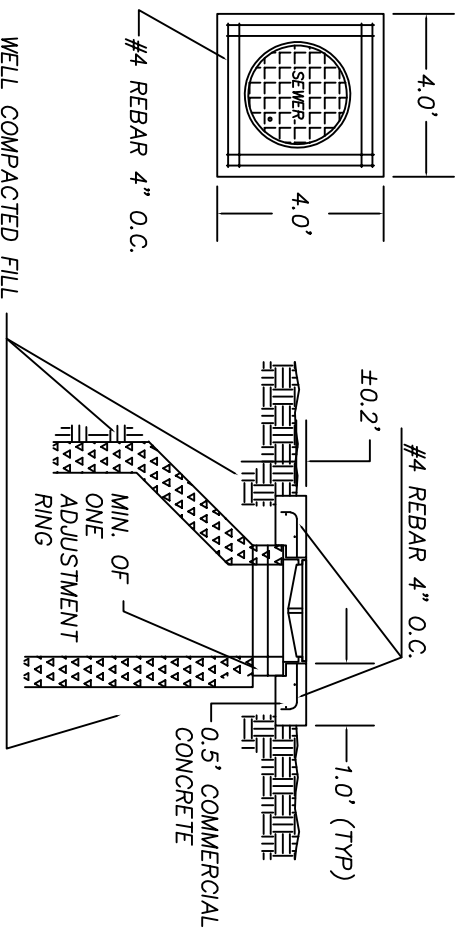


# MANHOLE IN PAVED AREA



# MANHOLE OUTSIDE PAVED AREA



## NOTES:

1. ON MANHOLE OUTSIDE ASPHALT, ADD REINFORCING STEEL AS SHOWN ABOVE.
2. DEFORMED BAR TO MEET ASTM A615 GRADE 60, FY=60,000 P.S.I.
3. OPENING IN LID FOR USE OF MANHOLE HOOK IS REQUIRED.

LAST REVISED 7/2016



THURSTON COUNTY  
PUBLIC WORKS

DEVELOPMENT  
REVIEW

ROADWAY  
STANDARDS

MANHOLE  
COLLAR  
DETAIL