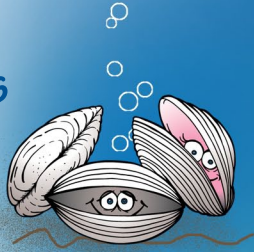


More Good Reasons to Pick Up After Your Pet



- ✓ Keep swimming beaches safe and shellfish beds open for harvest.
- ✓ Protect children from harmful microorganisms contained in pet waste, such as roundworms, Giardia and E. coli.
- ✓ Prevent gross, smelly bacteria-ridden messes from being tracked indoors.
- ✓ **Avoid fines.** The deposit of animal waste on public property including parks, sidewalks and streets is punishable by a fine in the Cities of Lacey, Olympia and Tumwater.
- ✓ **Ensure cleaner, healthier waters for all of us!**

Thank you for helping
to keep our waters clean!

For more information and tips
on cleaning up after your pet contact your local
storm and surface water utility, or go to
<http://www.streamteam.info/actions/petwaste/>

Don't Let Your Pet Pollute!

How to Safely Dispose of Pet Poop

Tips for Bagging It

Get a
Free Pet
Waste Bag
Dispenser

that attaches
to your dog's leash,
so you can always scoop it, bag it and trash it. Stop
by the Public Works customer service counter at the
Cities of Lacey, Olympia or Tumwater or the Water
Resources Office of Thurston County to pick one up
today. Or you can always buy similar dispensers
and bag refills where pet supplies are sold.

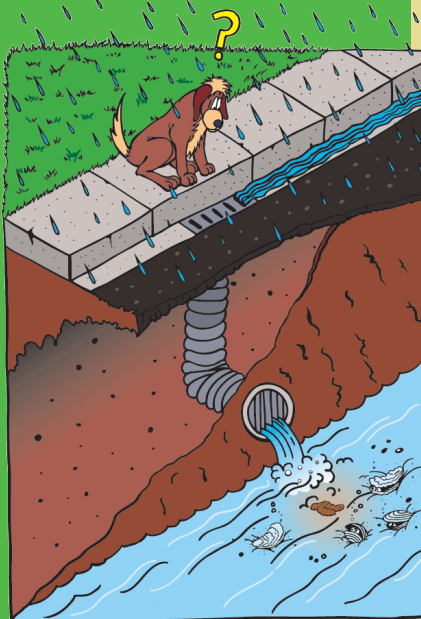


Pet Waste Can Pollute Our Watersheds!

Dog poop left on streets and lawns doesn't just disappear or become fertilizer. It is raw sewage and is often washed down storm drains and ditches where it is carried into local streams, rivers, lakes and Puget Sound spreading parasites, viruses and bacteria for miles. The bacteria in pet waste can make it unsafe to swim, fish or harvest shellfish in our waters.

Did you know...

A single gram of dog poop (about the size of a single pea) contains 23 million fecal coliform bacteria, almost twice as much as human waste! "Just a small bit" of pet waste goes a long way in fouling local waters. The poop produced by one large dog in a single day can contain 7.8 billion fecal coliform bacteria, which is enough pollution to close 15 acres of Puget Sound waters.



PROPER PET WASTE DISPOSAL

1 When Walking – Scoop It, Bag It, Trash It

Always bring a plastic bag when you walk your dog. Get a free portable pet waste bag dispenser to attach to your leash from your local Stormwater Utility Department so you are always ready to scoop it, bag it and place it in the trash.



!

Bring plastic bags with you when you walk your dog.

Use a bag to pick up the dog waste.

Tie bag closed and place in the trash.

2 At Home – Always Trash It. Never Flush or Compost It!

Long handled "pooper scoopers" available at pet stores make it easy to patrol your yard on a regular basis so that pet waste isn't washed away in the next rain storm or lawn watering. Scoop it, bag it and trash it, at least once a week. Handle cat litter the same way; bag it up and place in the garbage. Never flush pet waste, compost it or dispose of it in your yard waste container.

