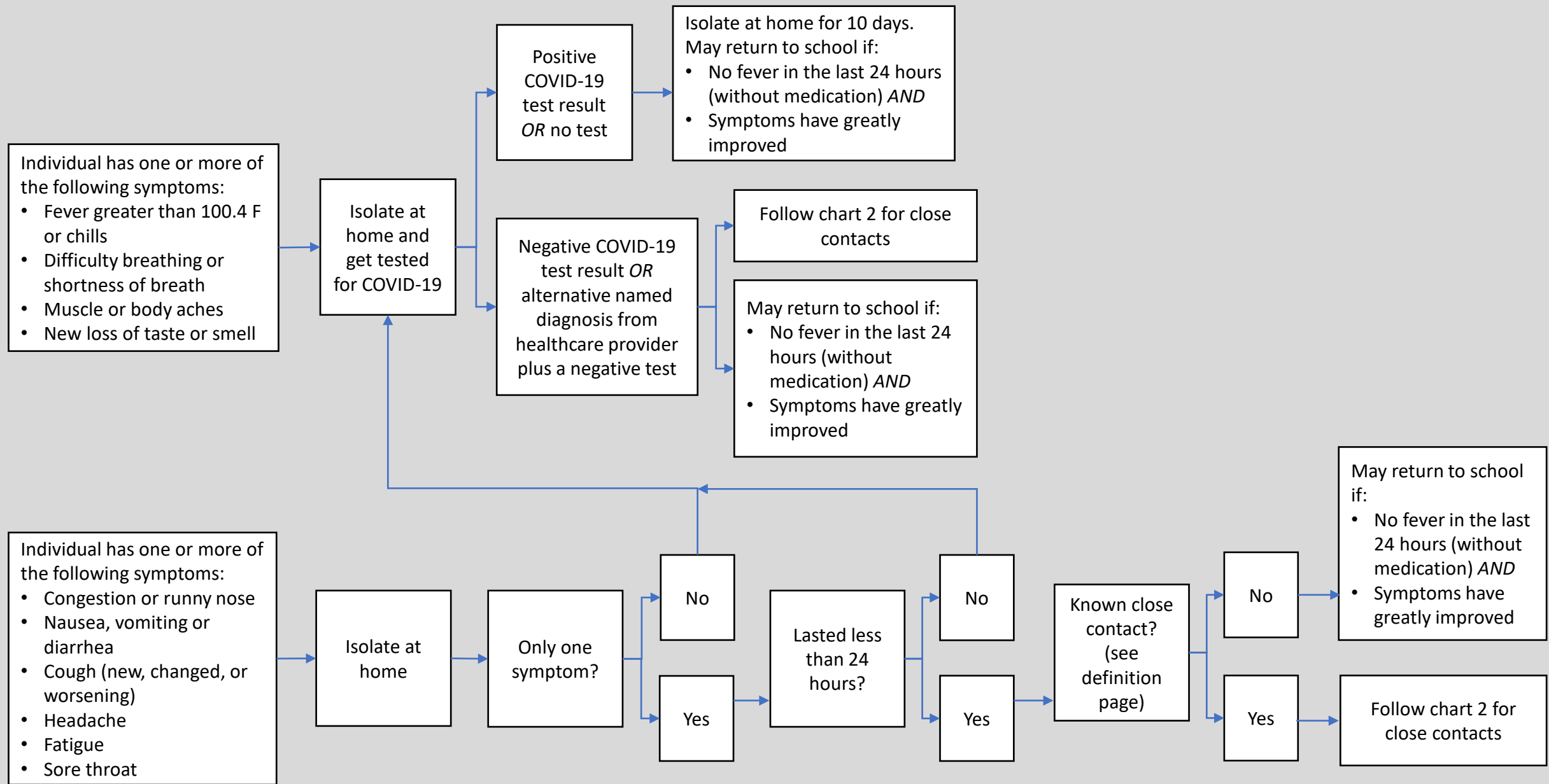




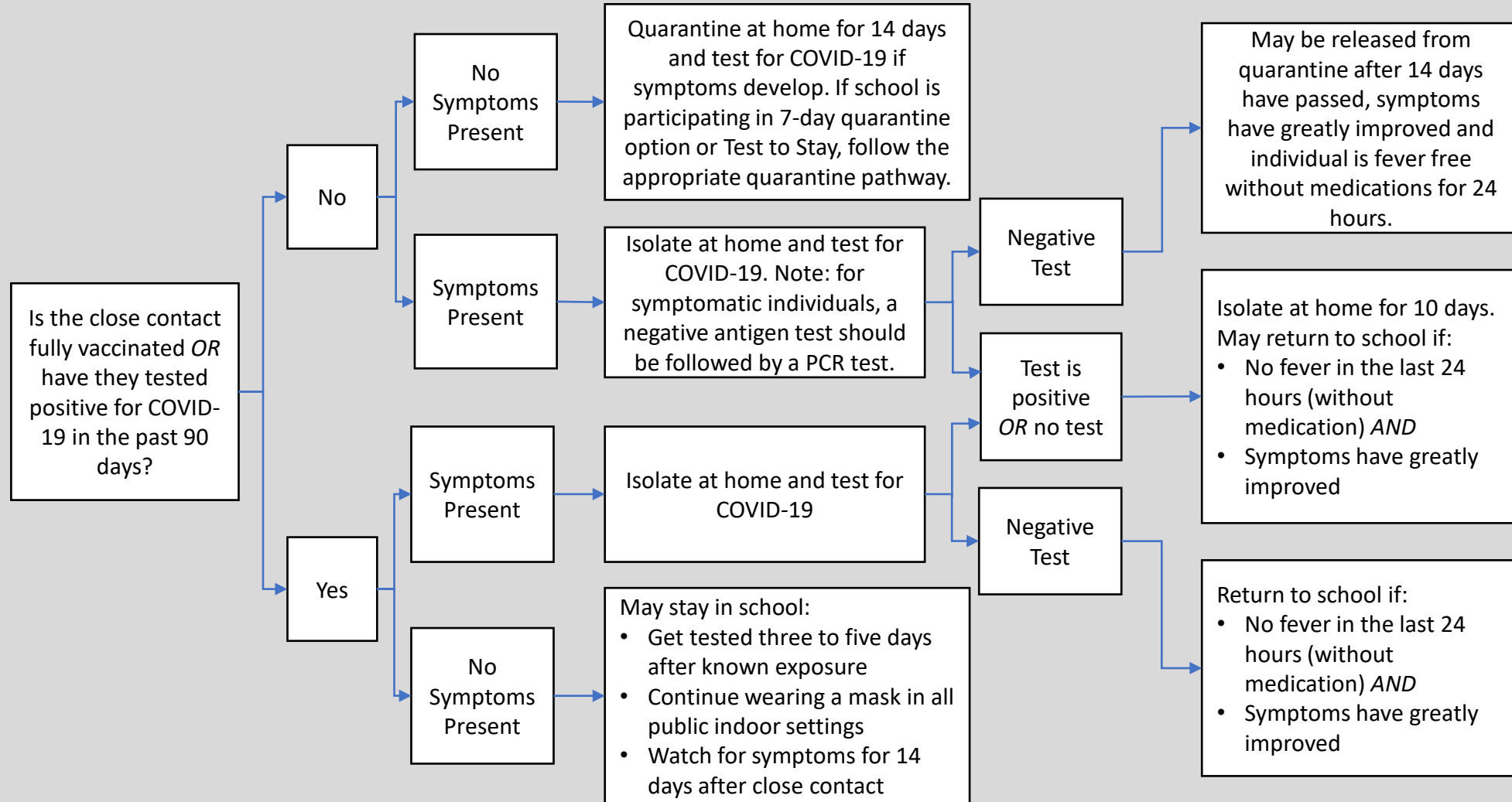
Flowchart for Symptomatic Students and Staff



Flowchart for Close Contacts

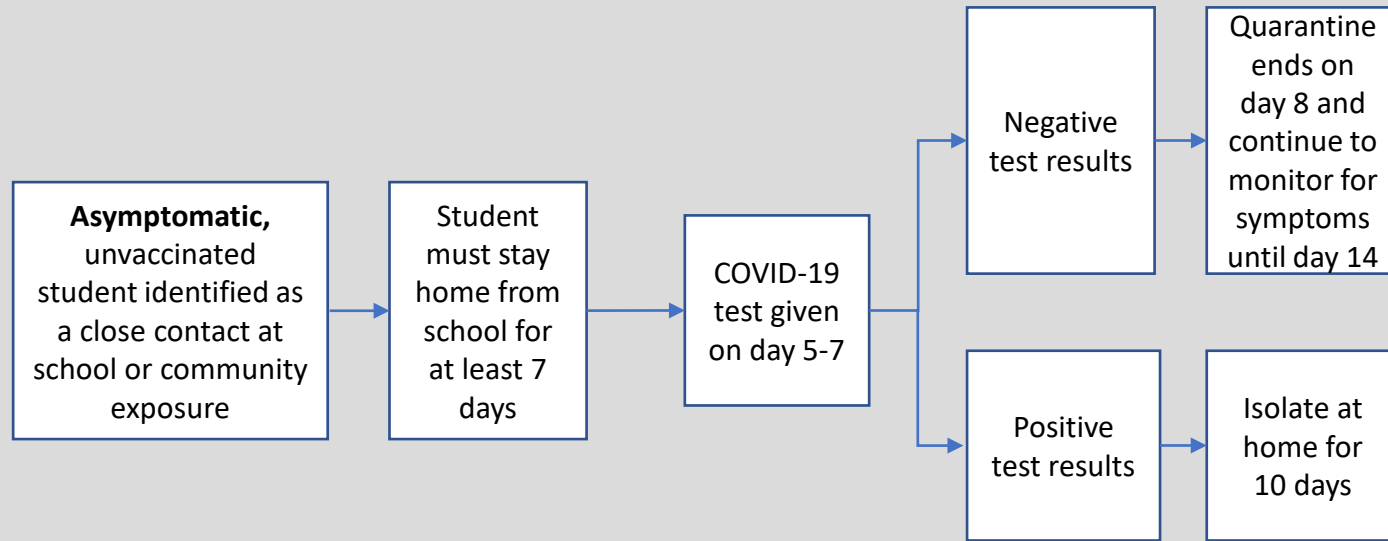
Close Contact:

- **Students in K-12 classroom:** Students who were wearing a mask and were within 3 feet of another student with COVID-19. Three to five days after exposure, COVID-19 testing is strongly recommended for students within six feet of a confirmed COVID-19 case.
- **Anywhere else at school:** Someone within 6 feet of a person with COVID-19 for at least 15 minutes over 24 hours. This includes exposure between a student and an adult or exposure between adults.



7-Day Quarantine Option

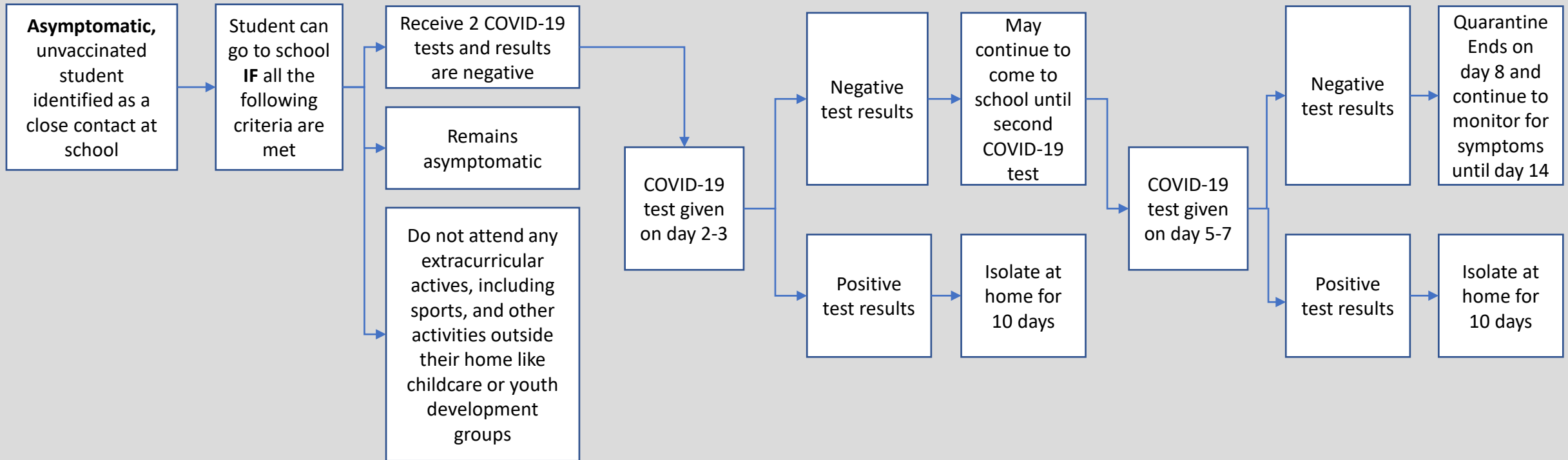
Schools opting to use the 7-day quarantine option may offer this option to reduce quarantine for both students and school employees. Students and school employees must stay home for 7 days and receive a negative test result to return to school.



If students or school employees develop symptoms at any time, follow the close contact flowchart.

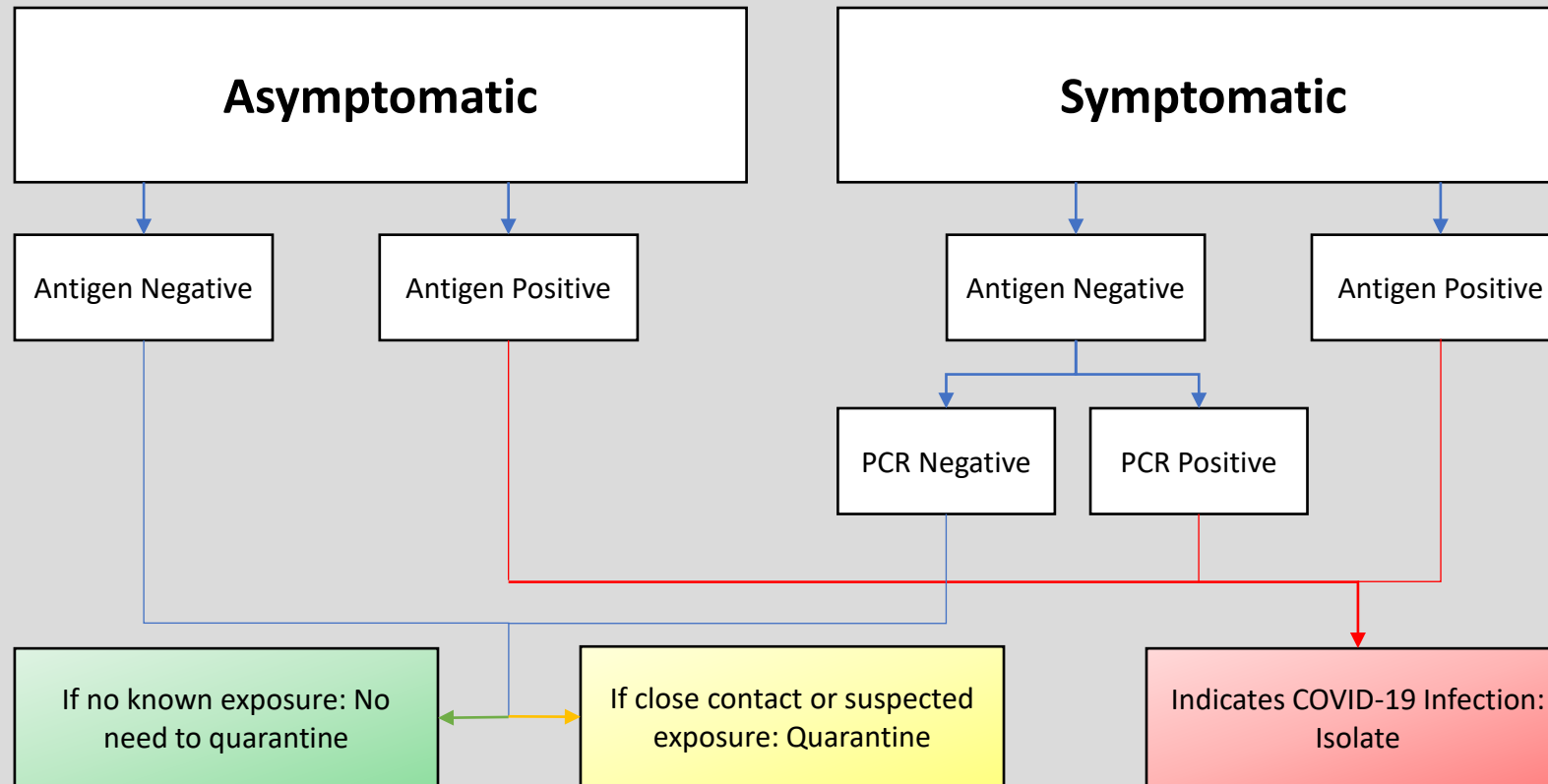
Test to Stay Program

Students can attend school and must follow a modified quarantine for 7 days after exposure.



If students develop symptoms at any time, follow the close contact flow chart.
Test to Stay is not available in an outbreak situation.

Antigen Test for COVID-19



If a person with COVID-19 symptoms tests negative for SARS-CoV-2 with a molecular test, they may return to school following existing school illness management policies so long as they are not a close contact of someone with COVID-19 and subject to quarantine. If a person with COVID-19 symptoms tests negative for SARS-CoV-2 with an antigen test, per CDC antigen testing guidance, a confirmatory lab-based molecular test is recommended.

Close Contact:

- **Students in K-12 classroom:** Students who were wearing a mask and were within 3 feet of another student with COVID-19. Three to five days after exposure, COVID-19 testing is *strongly recommended* for students within six feet of a confirmed COVID-19 case.
- **Anywhere else at school:** Someone within 6 feet of a person with COVID-19 for at least 15 minutes over 24 hours. This includes exposure between a student and an adult or exposure between adults.

Quarantine:

- Quarantine prevents people who have been exposed to COVID-19 to spread the disease to others unknowingly. Stay home for 14 days after your last contact with a person who has COVID-19. If possible, stay away from people you live with. Watch for symptoms of COVID-19. For students, the 7-day quarantine option or the Test to Stay program are additional options to reduce the length of quarantine. For school employees only, the 7-day quarantine is an additional option.
- Fully vaccinated asymptomatic individuals do not need to quarantine. They should wear a mask and get tested 3-5 days after exposure. Refer to document titled “Thurston County School Guidance for COVID-19” for ongoing COVID-19 exposures.

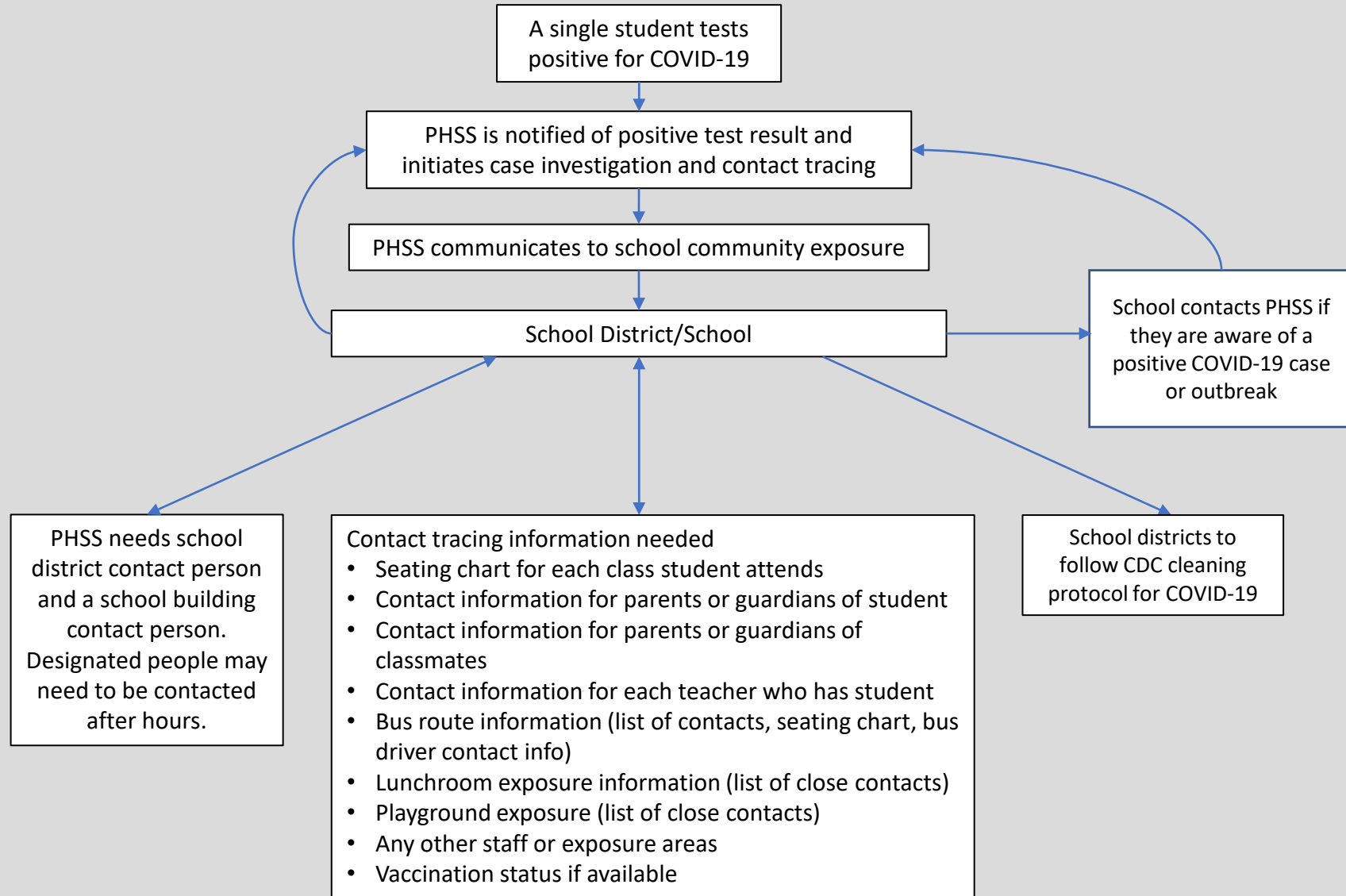
Isolation:

- Isolation is used to separate people infected with COVID-19 from those who are not infected. Stay home and away from others, even if you don't have symptoms. If you do have symptoms, monitor your symptoms and seek medical attention if needed.

Fully Vaccinated:

- People are considered fully vaccinated for COVID-19 ≥ 2 weeks after they have received their second dose in a 2-dose series (Pfizer/Moderna), or ≥ 2 weeks after they have received their single-dose vaccine (J&J/Jansen).

Communication Plan – Single Positive Case



Classroom Outbreaks:

- Defined as three or more COVID-19 cases among students or staff within a 14-day period, who are epidemiologically linked, do not share a household and did not have significant contact outside of school grounds. Classroom closure may be necessary to control spread of COVID-19.
- Test to Stay is not an option in an outbreak. The classroom will be closed for 7 days and the 7-day quarantine flow chart should be followed. If transmission persists a 14-day closure will be considered.

Closure of a school may be necessary when there is evidence of uncontrolled spread of COVID-19. Factors considered are:

- Number of classrooms with outbreaks
- Rapid increase in number of cases
- Absentee rate greater than 10%
- Evidence of 2 or more generations of COVID-19 transmission
- Staffing limitations such that a school is not able to remain open
- Schools closed will be required to follow a 14-day quarantine to stop disease transmission

