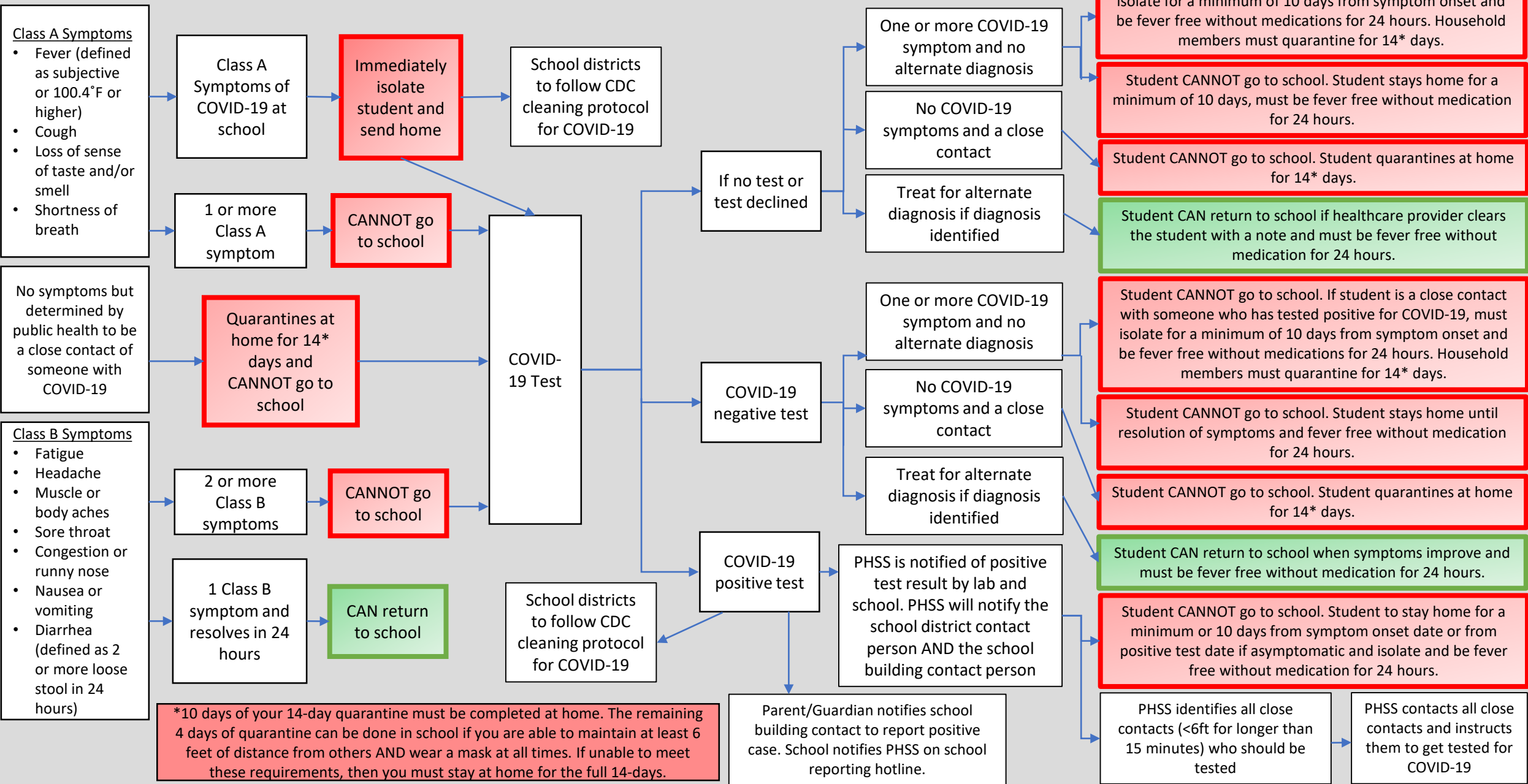
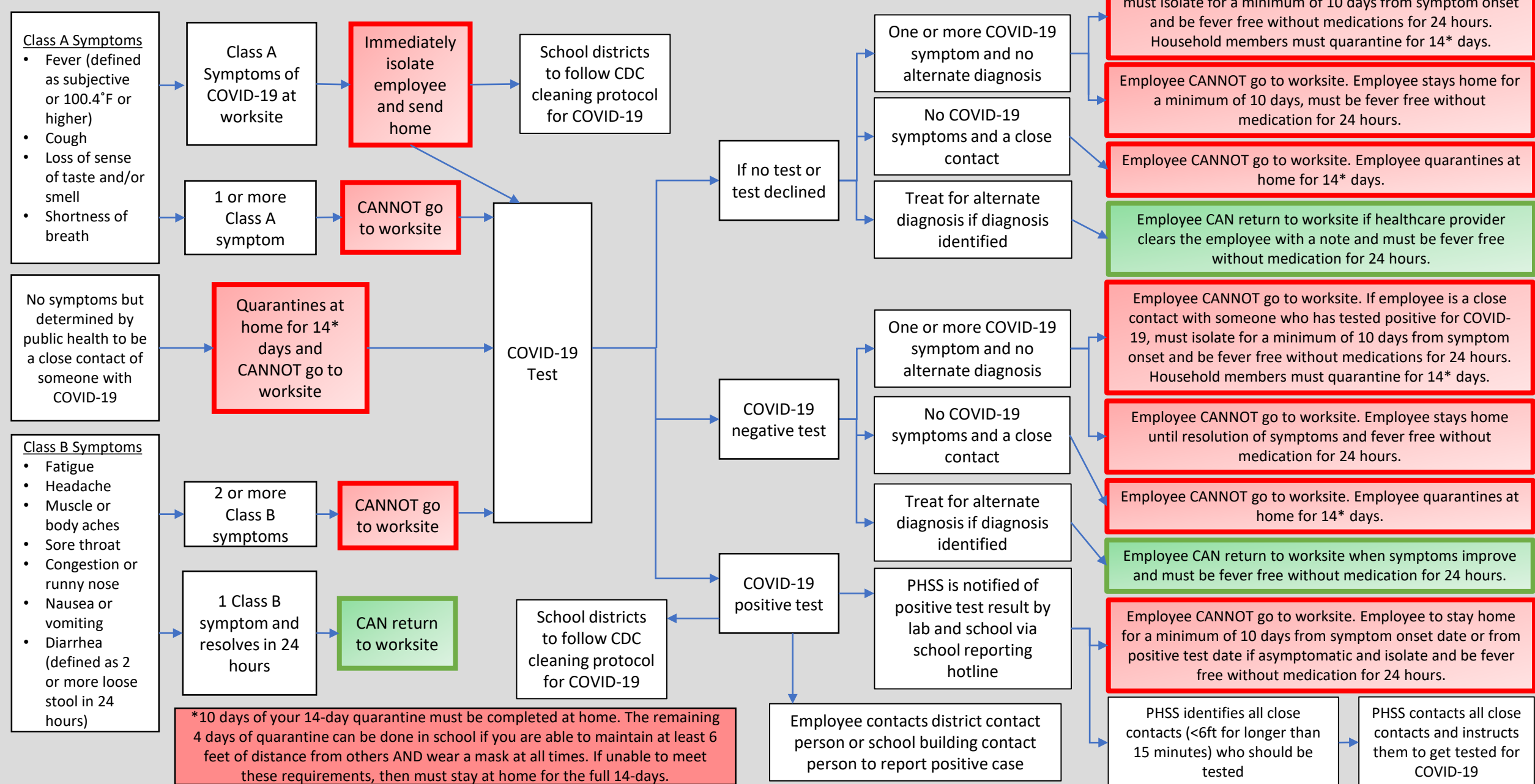


Thurston County Public Health and Social Services (PHSS) and Thurston County Schools

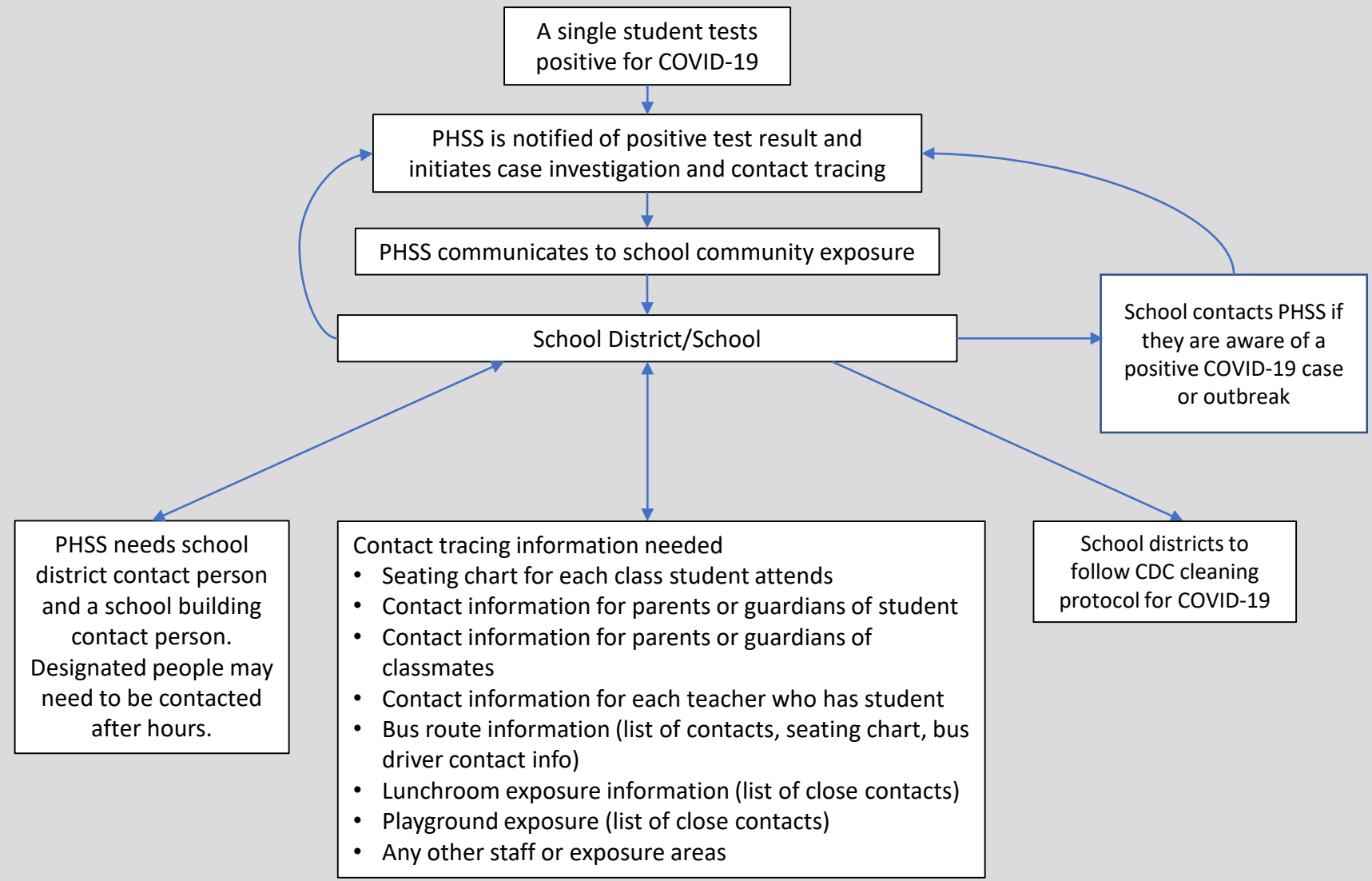
COVID-19 Student Pathway



Thurston County Public Health and Social Services (PHSS) and Thurston County Schools COVID-19 Employee Pathway



Thurston County Public Health and Social Services (PHSS) and Thurston County Schools Communication Plan



Thurston County Public Health and Social Services (PHSS) and Thurston County Schools Communication Plan

What triggers a classroom closure?

- Two or more COVID-19 cases among students or staff within a 14-day period, who are epidemiologically linked, do not share a household and did not have significant contact outside of school grounds

What triggers a school closure?

- For schools with fewer than 10 classrooms – if 2 or more classrooms are quarantined
- In larger schools if more than 10% of classrooms are quarantined
- If there is not enough staff for school to function
- If no cohorts, school closes when there is a rapid increase in cases, 2 or more generations of transmission, or school does not have enough staff to function

