

DRAFT  
Board Public Hearing Draft  
October 4, 2022

Thurston County  
Community Planning and Economic Development Department  
Community Planning Division

## BOARD OF COUNTY COMMISSIONER PUBLIC HEARING DRAFT

October 4, 2022

### **Mitigation Fees Necessary to Implement The Habitat Conservation Plan (HCP)**

*The proposed mitigation fees are a requirement of the federal permit issued by the U.S. Fish and Wildlife Service. Under Incidental Take Permit (#ESPER0043489) the County is required to fully fund the HCP. The fees are proportional to the quality of the habitat and the area of the impact. The final mitigation fee amount will be determined by staff after a review of the application using the methodology listed in the fee schedule.*

# Thurston County Habitat Conservation Plan (HCP) Mitigation Fee and Determination Methods



The HCP mitigation fees are a requirement of the federal permit (#ESPER0043489) issued to Thurston County by the U.S. Fish and Wildlife Service. The final fee amount will be determined by staff during review and is required to be paid in full before the issuance of the Certificate of Inclusion.

<i>Species/Service Area</i>	<b>Fee per Credit*</b>	<b>Methodology for Credit Determination</b>
<i>Olympia pocket gopher (OPG)</i>	\$51,111/credit	Thurston County HCP Appendix H: Credit-Debit Methodology
<i>Tenino pocket gopher (TPG)</i>	\$12,910/credit	Thurston County HCP Appendix H: Credit-Debit Methodology
<i>Yelm pocket gopher North (YPG-N)</i>	\$20,215/credit	Thurston County HCP Appendix H: Credit-Debit Methodology
<i>Yelm pocket gopher East (YPG-E)</i>	\$17,137/credit	Thurston County HCP Appendix H: Credit-Debit Methodology
<i>Yelm pocket gopher South (YPG-S)</i>	\$14,644/credit	Thurston County HCP Appendix H: Credit-Debit Methodology
<i>Taylor's Checkerspot butterfly (TCB)</i>	\$38,054/credit	Thurston County HCP Appendix H: Credit-Debit Methodology
<i>Oregon vesper sparrow (OVS)</i>	\$20,636/credit	Thurston County HCP Appendix H: Credit-Debit Methodology
<i>Oregon spotted frog (OSF)</i>	\$15,203/credit	Calculating Credits and Debits for Compensatory Mitigation in Wetlands of Western Washington

\* the number of credits needed depends upon the size of the impact and is calculated using the methodology listed.

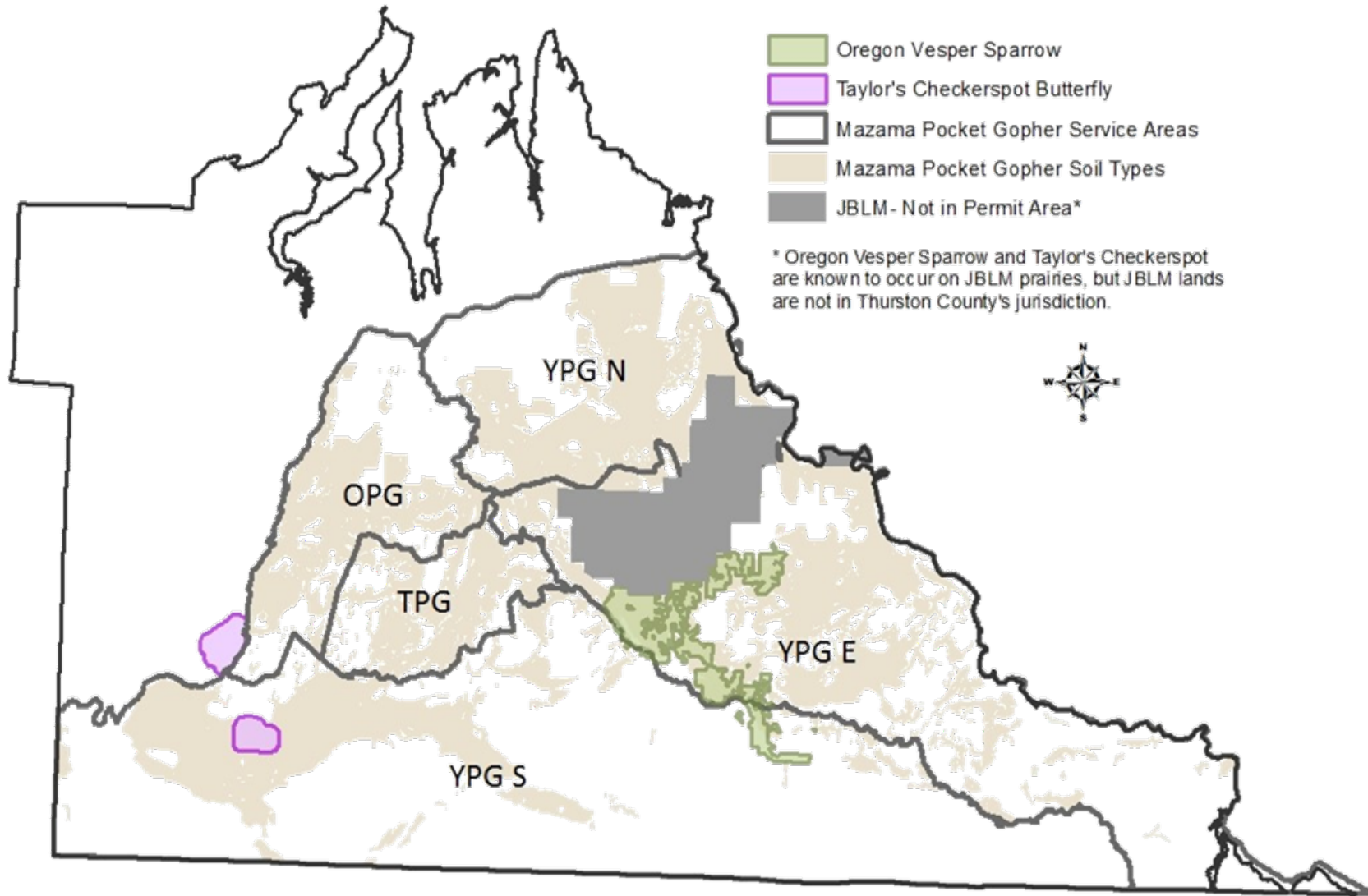
Mitigation Fees are automatically adjusted each year on January 1 by the percentage increase, if any, in the April Consumer Price Index for the previous year. The maximum increase shall be 3.5%. "Consumer Price Index" for this section shall mean the Urban Wage Earners and Clerical Workers Index for the Seattle-Tacoma-Bellevue area. Community Planning & Economic Development and Public Works Development Review fees are rounded to the nearest \$1.00.

The Board of County Commissioners may, from time to time, complete a full review of actual costs and the underlying assumptions developed as part of the initial funding analysis and recalculate and adjust the mitigation fee by further action of the Thurston County Board of Commissioners to ensure full funding of the Thurston County HCP.



**DRAFT**

## Thurston County Habitat Conservation Plan (HCP) Species and Service Areas Map



You can also find this information mapped on the Thurston County Geodata Permitting Map at <https://map.co.thurston.wa.us/Html5Viewer/Index.html?viewer=Permitting.Main>