

Thurston County Shoreline Master Program

(NOT YET ADOPTED—OPEN FOR PUBLIC COMMENT)

Proposed Shoreline Designations

FIVE ENVIRONMENTAL DESIGNATIONS - Map on back

Shoreline Residential

Predominantly for single- or multi-family residential development around area lakes and the Puget Sound. Accommodates development, public access and recreational use in areas where medium to high density residential development and services exist or are planned.

Urban Conservancy

For areas that are or will be developed in urban settings. Allows for low-intensity water uses that won't cause big, negative impacts to shoreline functions. Allows a variety of compatible uses while protecting and restoring ecological functions of open space, floodplain and other sensitive lands in urban and developed settings.

Rural Conservancy

For areas like farms, forests, or properties next to steep banks, bluffs, flood-prone areas that can support low-intensity water-dependent use without large, negative impacts to the shoreline functions or processes. Provides for resource use, public access and recreational opportunities while protecting ecological functions; conserving existing ecological, historical and cultural resources.

Natural

For undeveloped areas currently performing important, irreplaceable ecosystem-wide functions that would be damaged by human activity. Protects shorelines performing ecological functions that are intolerant of human use and that are also already intact, relatively free of human influence, or minimally degraded. Very low intensity uses are allowed.

Aquatic

For lands waterward of the ordinary high-water mark (OHWM). Protects restores and provides for management of the unique characteristics and resources of the areas waterward of the OHWM.

Environmental Designations Map on back

WWW.THURSTONPLANNING.ORG

This is for informational purposes only. Find full details online in the code.



FACT SHEET #3

Proposed Shoreline
Designations & Map

ONLINE

www.thurstonplanning.org
click **Shoreline Master
Program**

ASK STAFF

A County SMP covers most shoreline building projects. Ask staff about yours.

READ THE CODE

Title 19

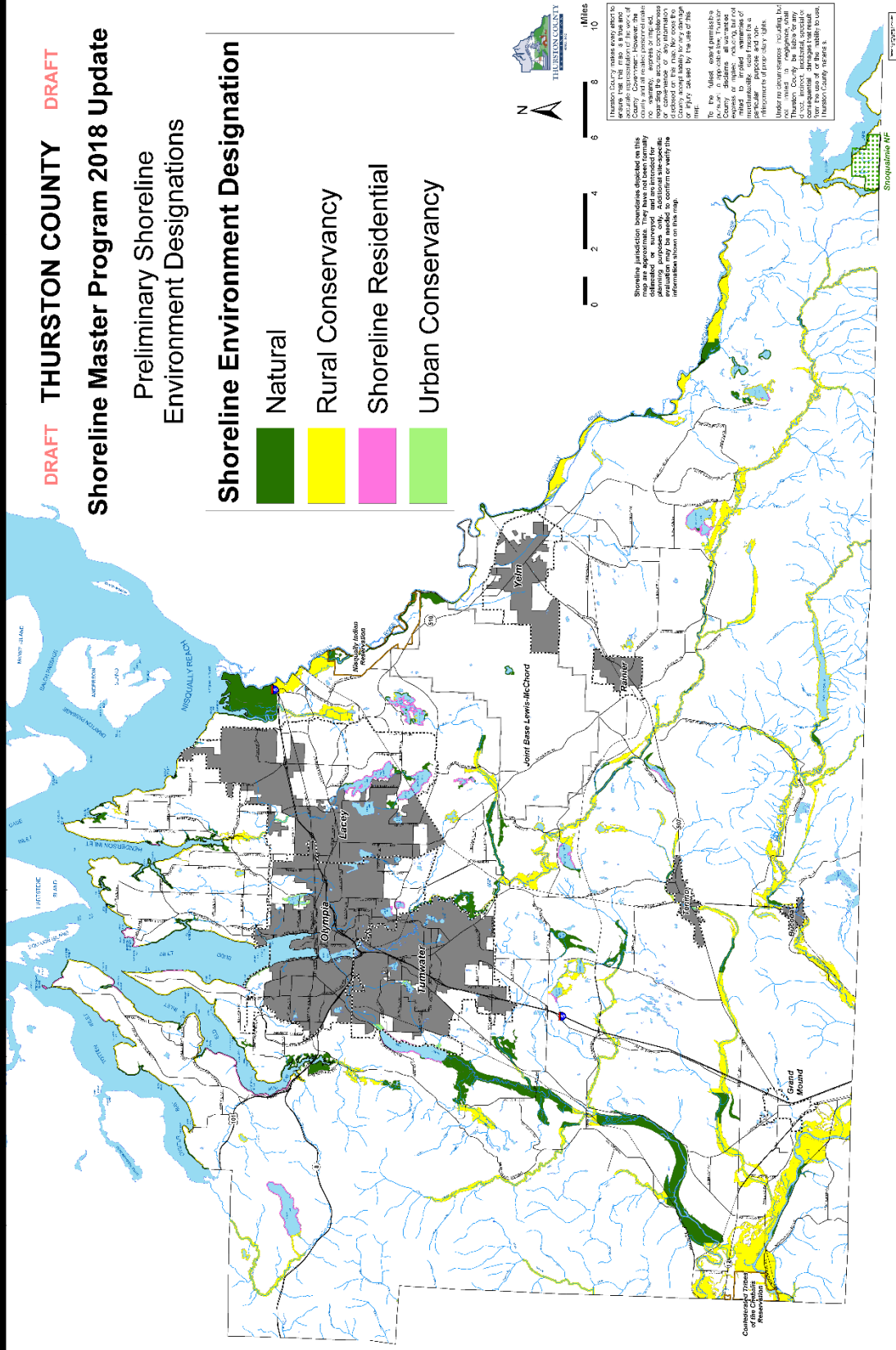
https://library.municode.com/wa/thurston_county/codes/code_of_ordinances?nodeId=TIT19SHMAPR

Shoreline Master Program 2018 Update

Preliminary Shoreline Environment Designations

Shoreline Environment Designation

- Natural
- Rural Conservancy
- Shoreline Residential
- Urban Conservancy



Shoreline jurisdiction boundaries depicted on this map are approximate. They have not been formally planned for purposes only. Agricultural lands are shown in white. Confirm or verify the information presented on this map.

Thurston County makes every effort to ensure that the map is a true and accurate representation of the County's jurisdiction. However, the County and its various personnel make no warranty, express or implied, regarding the accuracy, completeness, or timeliness of the information contained on this map. No count or liability shall be assumed by the County or any of its employees or agents for any errors or omissions on this map.

The map does not constitute a contract or agreement. It is intended for informational purposes only. It is not intended to be used for any legal or financial purposes. It is not intended to be used for any other purpose. It is not intended to be used for any other purpose.