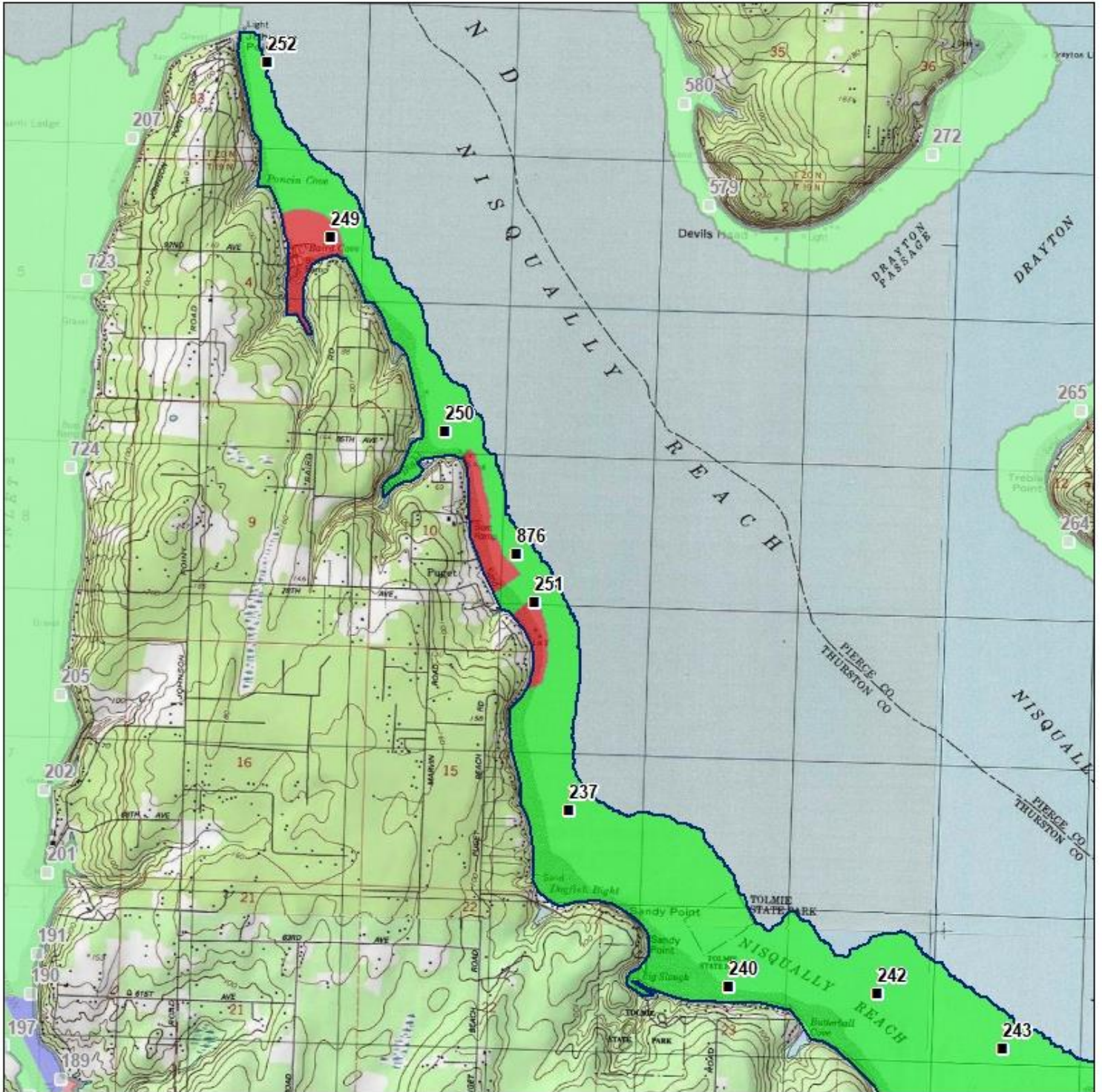
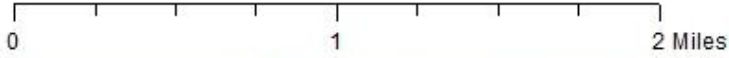


# Nisqually Reach (1 of 2)



- Classification**
- Approved
  - Conditional
  - Prohibited
  - Restricted
  - Unclassified

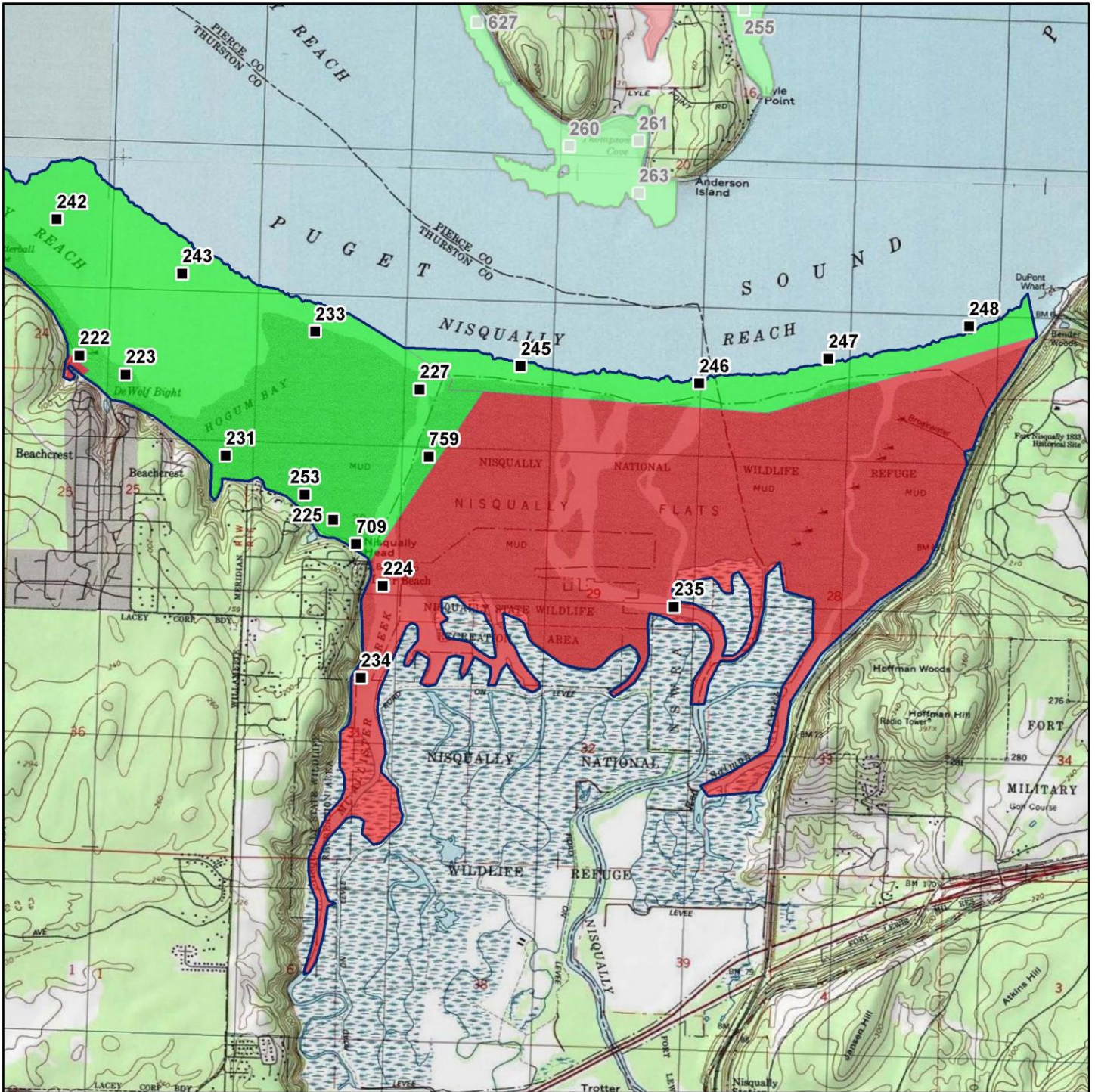
**Sampling Stations**



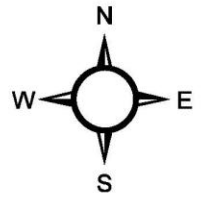
\* Some sampling stations are highlighted with grey box for ease of reading.



# Nisqually Reach (2 of 2)



Classification	Sampling Stations
Approved	■
Conditional	
Prohibited	
Restricted	
Unclassified	



\* Some sampling stations are highlighted with grey box for ease of reading.

## Nisqually Reach Summary of Marine Water Data 30 Samples

Station Number	Classification	Date Range	Range (FC/100 mL)	GeoMean (FC/100 mL)	Estimated 90 <sup>th</sup> (FC/100 mL)	Meets Standard
222	Approved	8/9/2016 - 3/3/2021	1.7 - 49.0	3.4	14.1	Yes
223	Approved	6/9/2016 - 3/3/2021	1.7 - 23.0	2.8	7.8	Yes
225	Approved	6/9/2016 - 3/3/2021	1.7 - 13.0	2.4	4.8	Yes
227	Approved	6/9/2016 - 3/3/2021	1.7 - 11.0	2.0	3.3	Yes
231	Approved	6/9/2016 - 3/3/2021	1.7 - 7.8	2.4	4.5	Yes
233	Approved	4/28/2016 - 3/3/2021	1.7 - 4.5	1.8	2.2	Yes
237	Approved	6/9/2016 - 3/3/2021	1.7 - 4.5	1.8	2.5	Yes
240	Approved	6/9/2016 - 3/3/2021	1.7 - 4.5	1.8	2.3	Yes
242	Approved	8/9/2016 - 3/3/2021	1.7 - 8.3	1.8	2.6	Yes
243	Approved	6/9/2016 - 3/3/2021	1.7 - 7.8	2.0	3.3	Yes
245	Approved	4/28/2016 - 3/3/2021	1.7 - 7.8	1.8	2.6	Yes
246	Approved	8/9/2016 - 3/3/2021	1.7 - 33.0	3.6	13.4	Yes
247	Approved	4/28/2016 - 3/3/2021	1.7 - 13.0	2.5	5.2	Yes
248	Approved	6/9/2016 - 3/3/2021	1.7 - 9.3	2.2	3.8	Yes
250	Approved	6/9/2016 - 3/3/2021	1.7 - 7.8	1.9	2.8	Yes
251	Approved	6/9/2016 - 3/3/2021	1.7 - 4.5	1.8	2.3	Yes
252	Approved	6/9/2016 - 3/3/2021	1.7 - 6.1	1.8	2.7	Yes
253	Approved	6/9/2016 - 3/3/2021	1.7 - 12.0	2.5	5.4	Yes
709	Approved	6/9/2016 - 3/3/2021	1.7 - 31.0	3.5	10.1	Yes
759	Approved	6/9/2016 - 3/3/2021	1.7 - 11.0	2.5	5.0	Yes
876	Approved	12/4/2018 - 3/3/2021	1.7 - 1.8	1.7	1.7	*N/A
224	Prohibited	4/28/2016 - 3/3/2021	1.7 - 17.0	3.9	10.8	Yes
234	Prohibited	6/9/2016 - 3/3/2021	1.7 - 49.0	5.4	17.2	Yes
235	Prohibited	6/9/2016 - 3/3/2021	1.7 - 49.0	14.4	46.2	No
249	Prohibited	8/9/2016 - 3/3/2021	1.7 - 7.8	2.0	3.3	Yes

The standard for approved shellfish growing waters is fecal coliform geometric mean not greater than 14 organisms / 100 mL with an estimated 90th percentile not greater than 43 organisms / 100 mL. The above table shows bacteriological results in relation to program standards.

\* N/A – SRS criteria require a minimum of 30 samples from each station. \* Station 876 has 12 samples.



# Nisqually Reach Rolling Estimated 90th Percentiles Stations 224, 234, and 235

