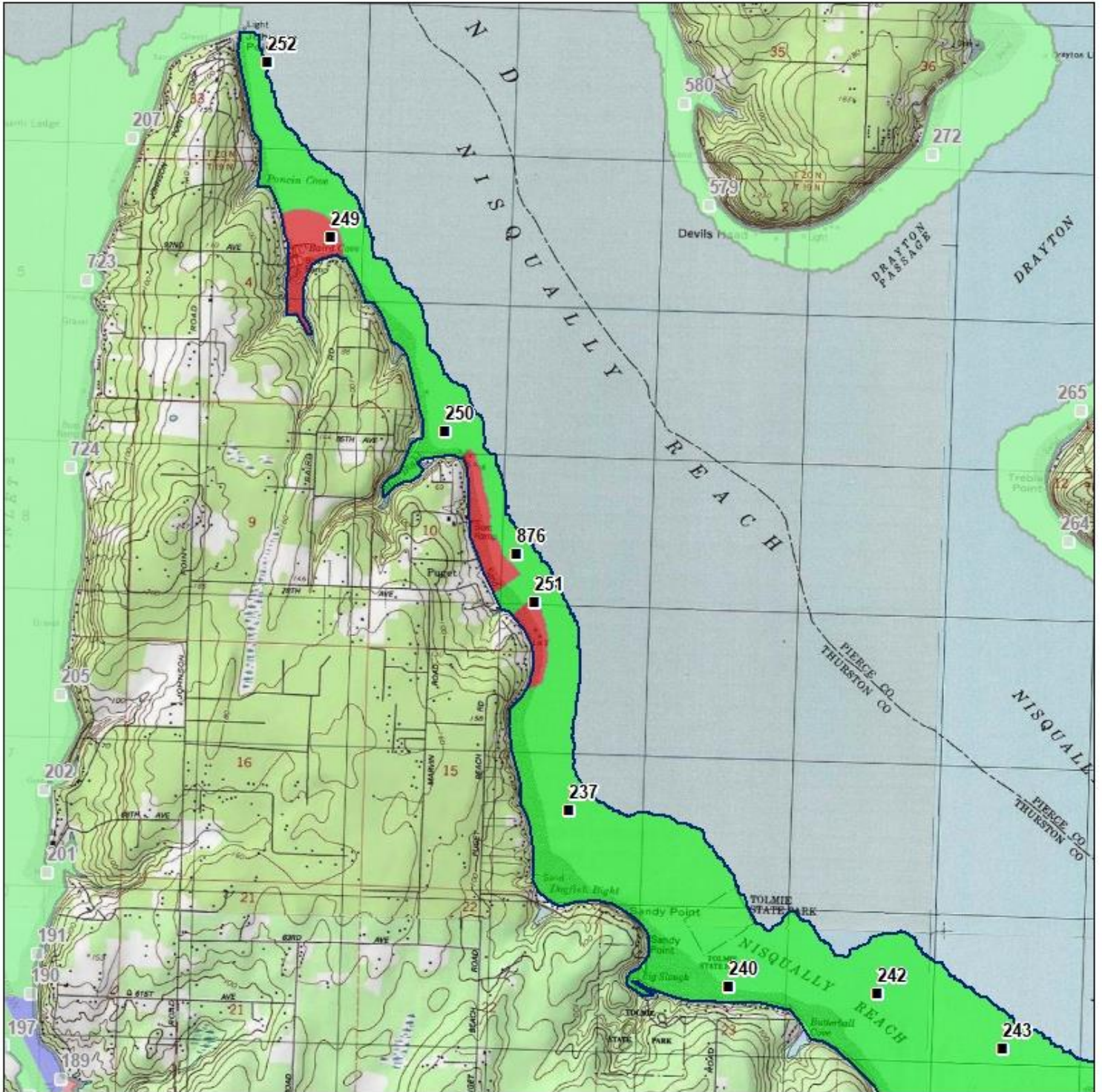
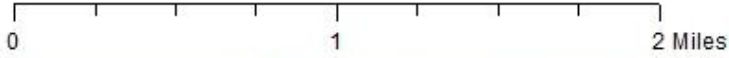


# Nisqually Reach (1 of 2)



### Classification

- Approved
- Conditional
- Prohibited
- Restricted
- Unclassified

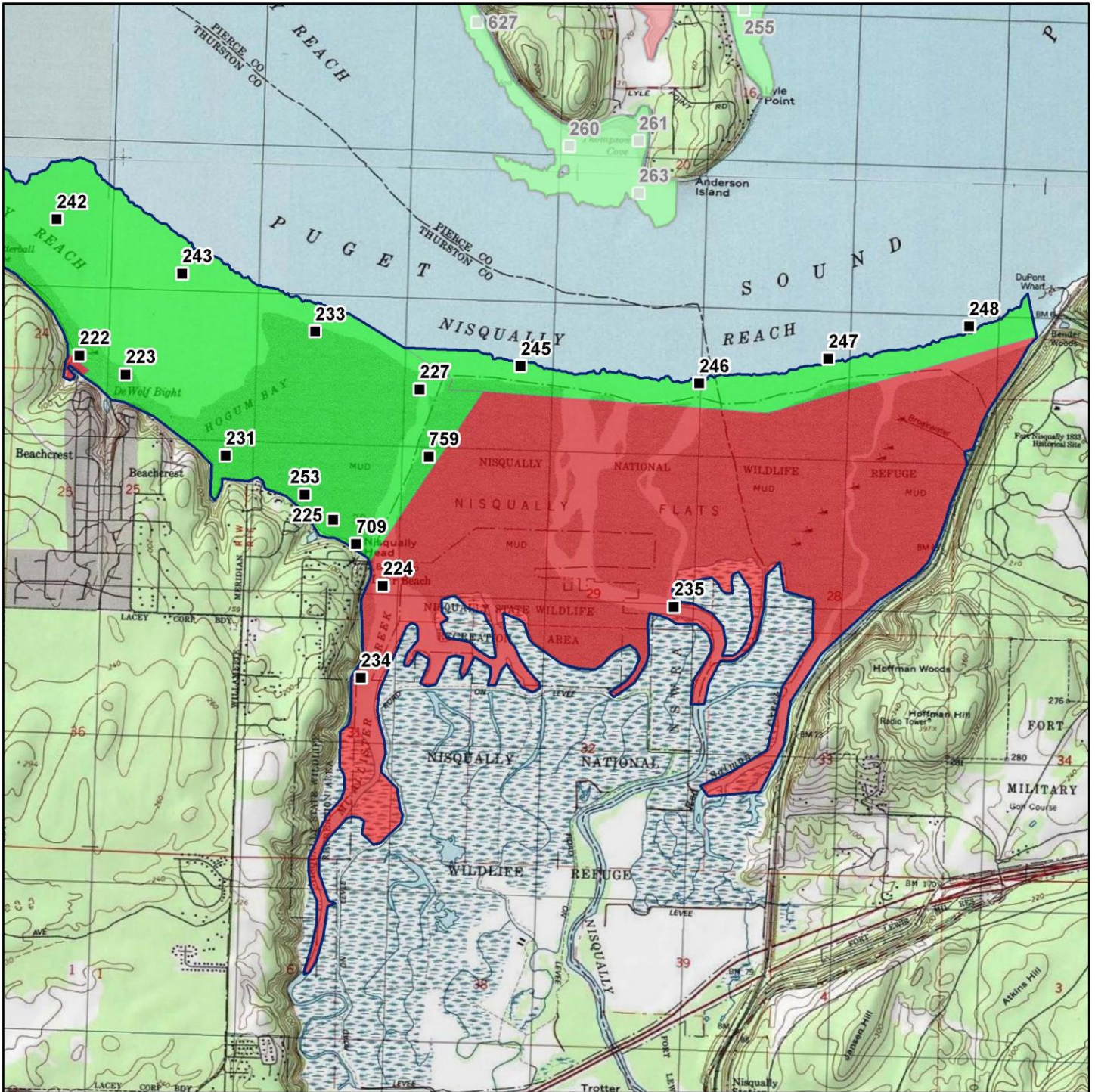
### Sampling Stations



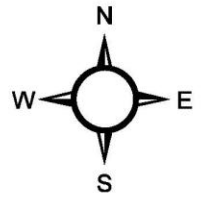
\* Some sampling stations are highlighted with grey box for ease of reading.



# Nisqually Reach (2 of 2)



Classification	Sampling Stations
<span style="display:inline-block; width:15px; height:15px; background-color: #00FF00; border: 1px solid black;"></span> Approved	<span style="display:inline-block; width:10px; height:10px; background-color: black; border: 1px solid black;"></span>
<span style="display:inline-block; width:15px; height:15px; background-color: #FFA500; border: 1px solid black;"></span> Conditional	
<span style="display:inline-block; width:15px; height:15px; background-color: #FF0000; border: 1px solid black;"></span> Prohibited	
<span style="display:inline-block; width:15px; height:15px; background-color: #0000FF; border: 1px solid black;"></span> Restricted	
<span style="display:inline-block; width:15px; height:15px; background-color: #808080; border: 1px solid black;"></span> Unclassified	



\* Some sampling stations are highlighted with grey box for ease of reading.

## Nisqually Reach Summary of Marine Water Data 30 Samples

Station Number	Classification	Date Range	Range (FC/100 mL)	GeoMean (FC/100 mL)	Estimated 90 <sup>th</sup> (FC/100 mL)	Meets Standard
222	Approved	12/5/2016 - 7/6/2021	1.7 - 49.0	3.1	11.0	Yes
223	Approved	10/4/2016 - 7/6/2021	1.7 - 23.0	2.7	7.1	Yes
225	Approved	10/4/2016 - 7/6/2021	1.7 - 13.0	2.3	4.6	Yes
227	Approved	10/4/2016 - 7/6/2021	1.7 - 11.0	2.0	3.3	Yes
231	Approved	10/4/2016 - 7/6/2021	1.7 - 7.8	2.3	4.2	Yes
233	Approved	8/9/2016 - 7/6/2021	1.7 - 4.5	1.8	2.2	Yes
237	Approved	10/4/2016 - 7/6/2021	1.7 - 4.5	1.8	2.2	Yes
240	Approved	10/4/2016 - 7/6/2021	1.7 - 4.5	1.8	2.2	Yes
242	Approved	12/5/2016 - 7/6/2021	1.7 - 8.3	1.8	2.7	Yes
243	Approved	10/4/2016 - 7/6/2021	1.7 - 7.8	2.0	3.3	Yes
245	Approved	8/9/2016 - 7/6/2021	1.7 - 7.8	1.9	3.1	Yes
246	Approved	12/5/2016 - 7/6/2021	1.7 - 33.0	3.4	12.7	Yes
247	Approved	8/9/2016 - 7/6/2021	1.7 - 13.0	2.3	4.7	Yes
248	Approved	10/4/2016 - 7/6/2021	1.7 - 11.0	2.3	4.5	Yes
250	Approved	10/4/2016 - 7/6/2021	1.7 - 7.8	1.9	2.8	Yes
251	Approved	10/4/2016 - 7/6/2021	1.7 - 4.5	1.8	2.3	Yes
252	Approved	10/4/2016 - 7/6/2021	1.7 - 6.1	1.8	2.4	Yes
253	Approved	10/4/2016 - 7/6/2021	1.7 - 12.0	2.4	4.9	Yes
709	Approved	10/4/2016 - 7/6/2021	1.7 - 31.0	3.4	9.9	Yes
759	Approved	10/4/2016 - 7/6/2021	1.7 - 11.0	2.4	4.8	Yes
876	Approved	12/4/2018 - 7/6/2021	1.7 - 1.8	1.7	1.7	*N/A
224	Prohibited	8/9/2016 - 7/6/2021	1.7 - 17.0	3.8	10.6	Yes
234	Prohibited	10/4/2016 - 7/6/2021	1.7 - 49.0	5.3	18.4	Yes
235	Prohibited	10/4/2016 - 7/6/2021	1.7 - 49.0	12.6	45.1	No
249	Prohibited	12/5/2016 - 7/6/2021	1.7 - 6.8	1.9	3.0	Yes

The standard for approved shellfish growing waters is fecal coliform geometric mean not greater than 14 organisms / 100 mL with an estimated 90th percentile not greater than 43 organisms / 100 mL. The above table shows bacteriological results in relation to program standards.

\* N/A – SRS criteria require a minimum of 30 samples from each station. \* Station 876 has 17 samples.



# Nisqually Reach Rolling Estimated 90th Percentiles Stations 224, 234, and 235

