

THURSTON COUNTY COMPREHENSIVE PLAN UPDATE

PLANNING COMMISSION – MARCH 4, 2020

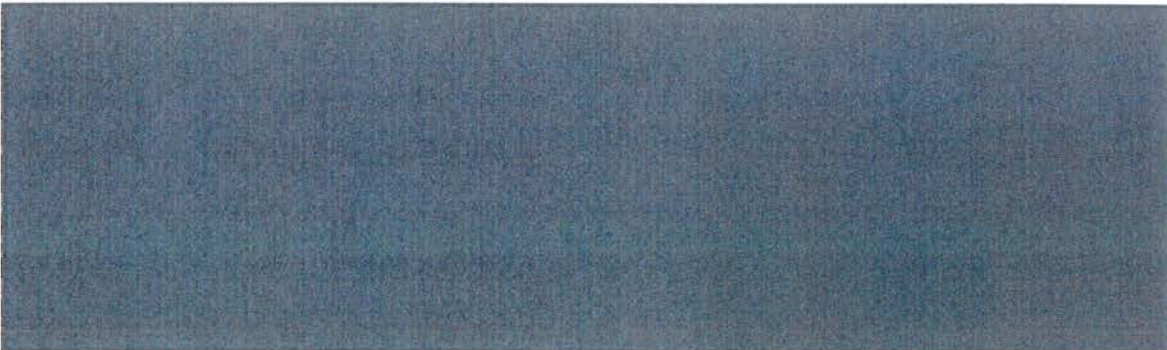


THURSTON

Comprehensive Plan Update 2020

2040

PARKS UPDATE



QUESTIONS?

Project Contact:

Maya Teeple, Senior Planner

Maya.Teeple@co.thurston.wa.us

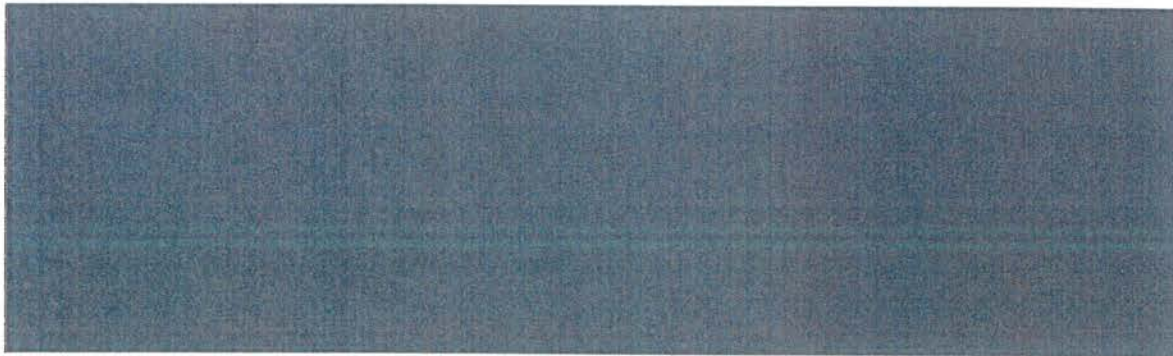
(360) 786-5578



5

LONG TERM FORESTRY UPDATE

Purpose: PC identify parcels for removal from LTF, if any

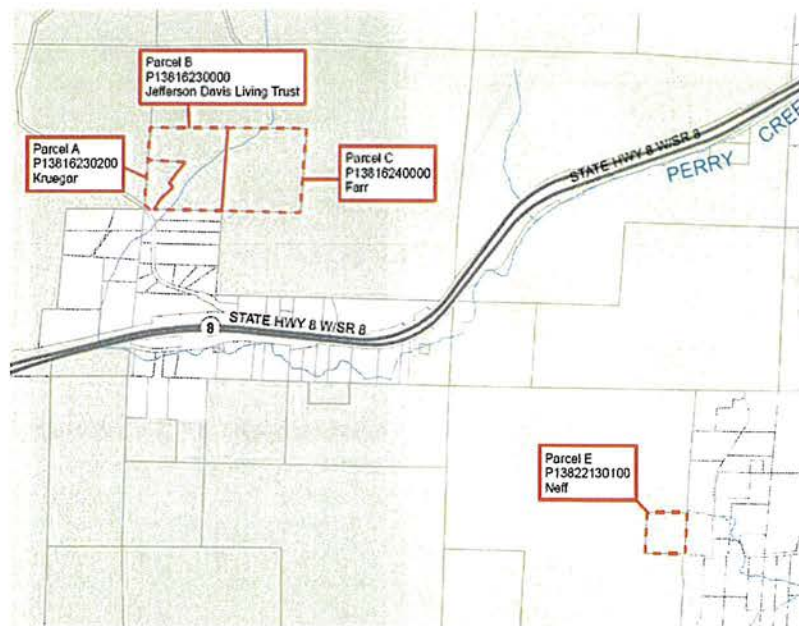


6

OPTIONS

- F1) No change - keep all evaluated parcels as Long-Term Forestry.
- F2) Convert select parcels D, F, and G from the Long-Term Forestry designation to RRR I/5.
- F3) Convert any consideration of parcels between A through G from the Long-Term Forestry designation to RRR I/5.
- F4) Further evaluate the conversion potential of any parcels between A through G from the Long-Term Forestry designation to another applicable zone.

9



Group I: Parcels A, B, & C

- Disagreement from property owners
- Critical areas on site
- Subdivision impact potential
- 45-65% forest coverage

Parcel E

- No preference
- More than 60% forested
- Harvest for personal

10



QUESTIONS?

Project Contact:

Kaitlynn Nelson, Associate Planner

Kaitlynn.Nelson@co.thurston.wa.us

(360) 867-2087