



Stormwater Facilities & Maintenance

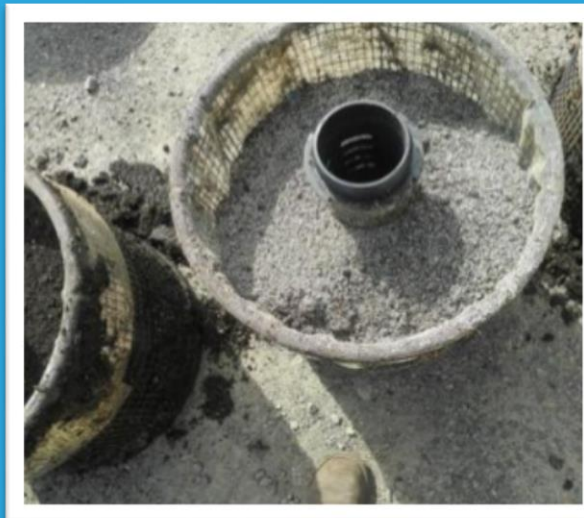
Treatment Devices

Treatment devices are installed inside underground vaults and provide water quality treatment through filtration, settling, or adsorption. Locations for treatment device implementation include parking lots, gas stations, streets, driveways, industrial or commercial facilities, and municipal yards.

In Thurston County, the two main treatment devices used are Media Filters and Hydrodynamic Separators. Both devices are commercially available, and are generally configured to remove one or more of the following contaminants: coarse sediment, oils and grease, litter, and debris.

Pro Tip:

When hiring a contractor to perform treatment device services, we recommend looking for a contractor certified by the manufacturer.



Source: bostonharborservices.com
A look inside a Contech filter cartridge

Maintenance required when:

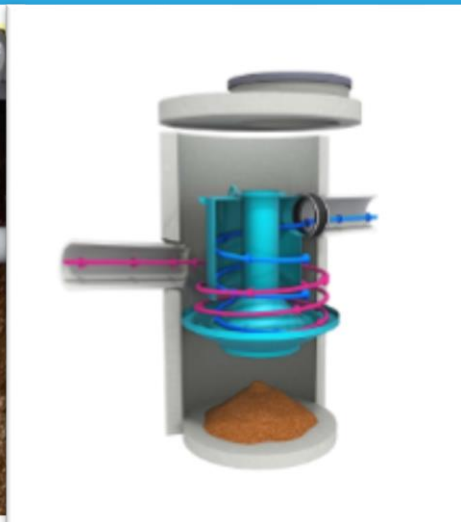
- Sediment exceeds manufacturer's recommendations inside the vault
- Filter vault does not drain within 24 hours or manufacturer's recommended time frame
- Trash and floatable debris is in vault
- Evidence of oil, gasoline, contaminants, or other pollutants in the vault

Contact your HOA or property manager immediately if:

- Water is bubbling out of the top of the structure
- There has been a spill
- Upstream catch basins are not draining properly

Visit us online:

ThurstonStormwater.org



Source: Hydro International Stormwater Separator

Don't let your systems fail.

Filter cartridge vaults should be checked annually at a minimum, being sure to remove accumulated water, sediment, and debris.



Maintenance frequency will always depend on the amount and type of pollutants targeted, location, and the number of large storm events.



Source: SPEL Environmental - recently maintained stormwater filter vault



Storm filters in need of maintenance

Keep water clean. Protect county roads from flooding. Save money.

Contractors are encouraged to receive specific training by the manufacturer's of proprietary devices. All Best Management Practices (BMPs) should be maintained in accordance with the manufacturer's recommendations and schedules. Facility owners are required to provide all maintenance logs to Thurston County's Stormwater Utility at the end of each calendar year.



Source: Idaho DEQ, Hydrodynamic Separator

For additional information regarding stormwater management in Thurston County, reference our Stormwater Drainage Manual at DM.ThurstonStormwater.org.

Call us with any questions at (360) 754-4681

Join our mailing list @ Join.ThurstonStormwater.org