



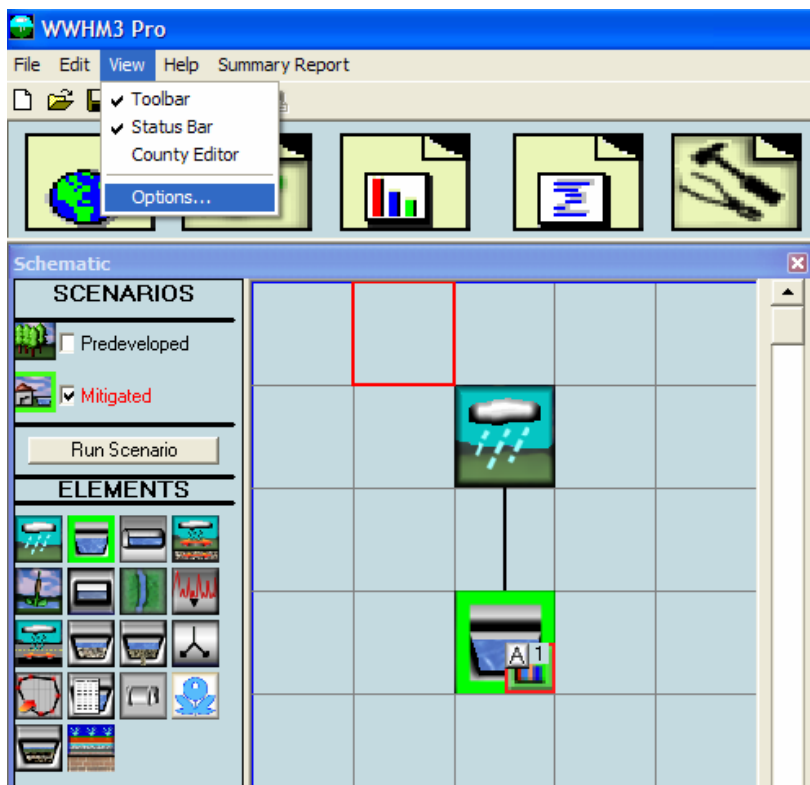
**CLEAR CREEK SOLUTIONS, INC.**  
6200 Capitol Blvd, Suite F  
Tumwater WA, 98501  
360-943-0304  
[www.clearcreeksolutions.com](http://www.clearcreeksolutions.com)

## Thurston County Recharge Expansion for WWHM3 7 July 2009

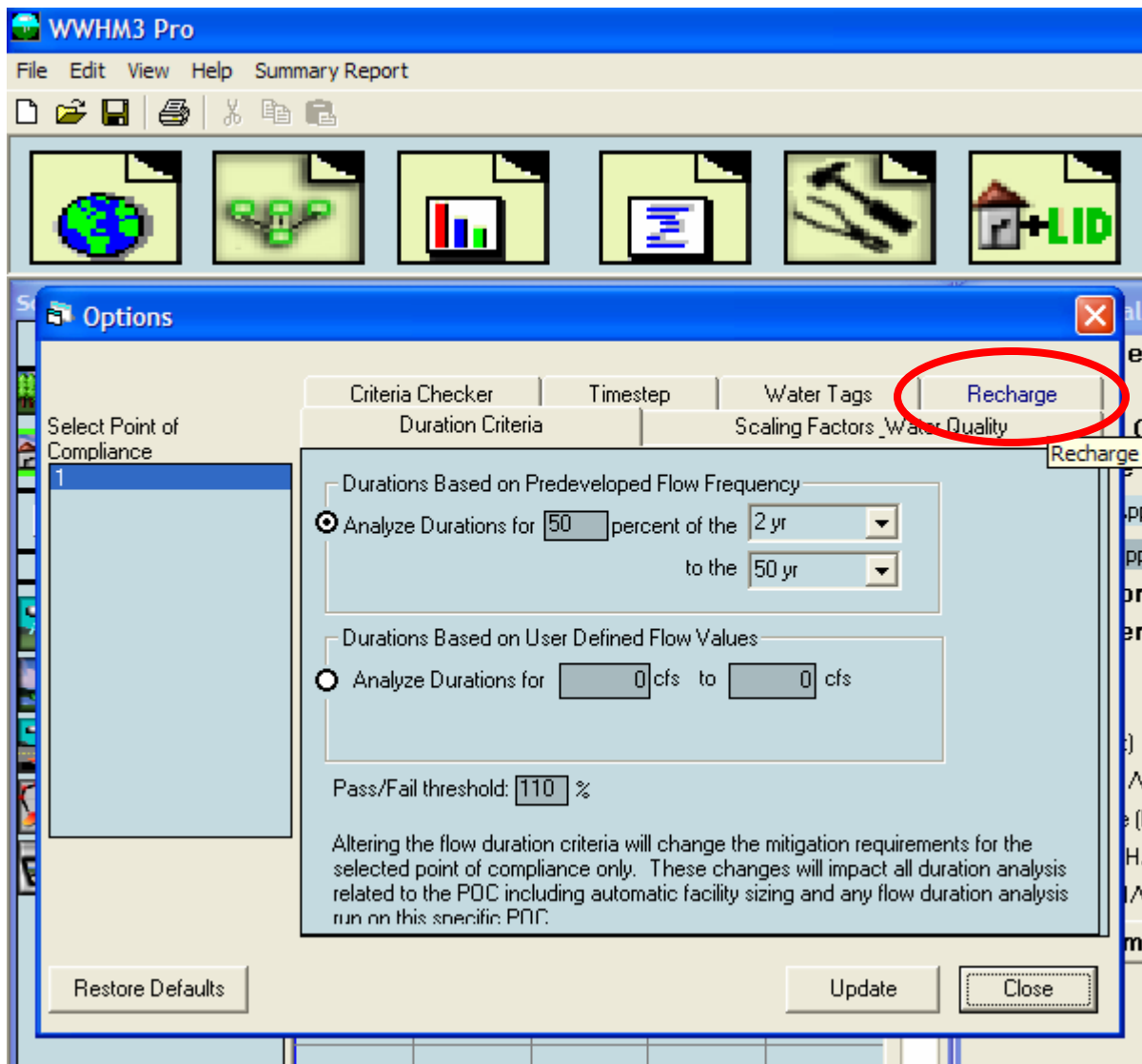
### Purpose

Currently WWHM3 does not track recharge information. Recharge is considered infiltration into the groundwater layer from either pervious soils or infiltration facilities. Clear Creek Solutions has modified WWHM3 to track and compute all inflow to the groundwater level and sum these values based on each point of compliance (POC).

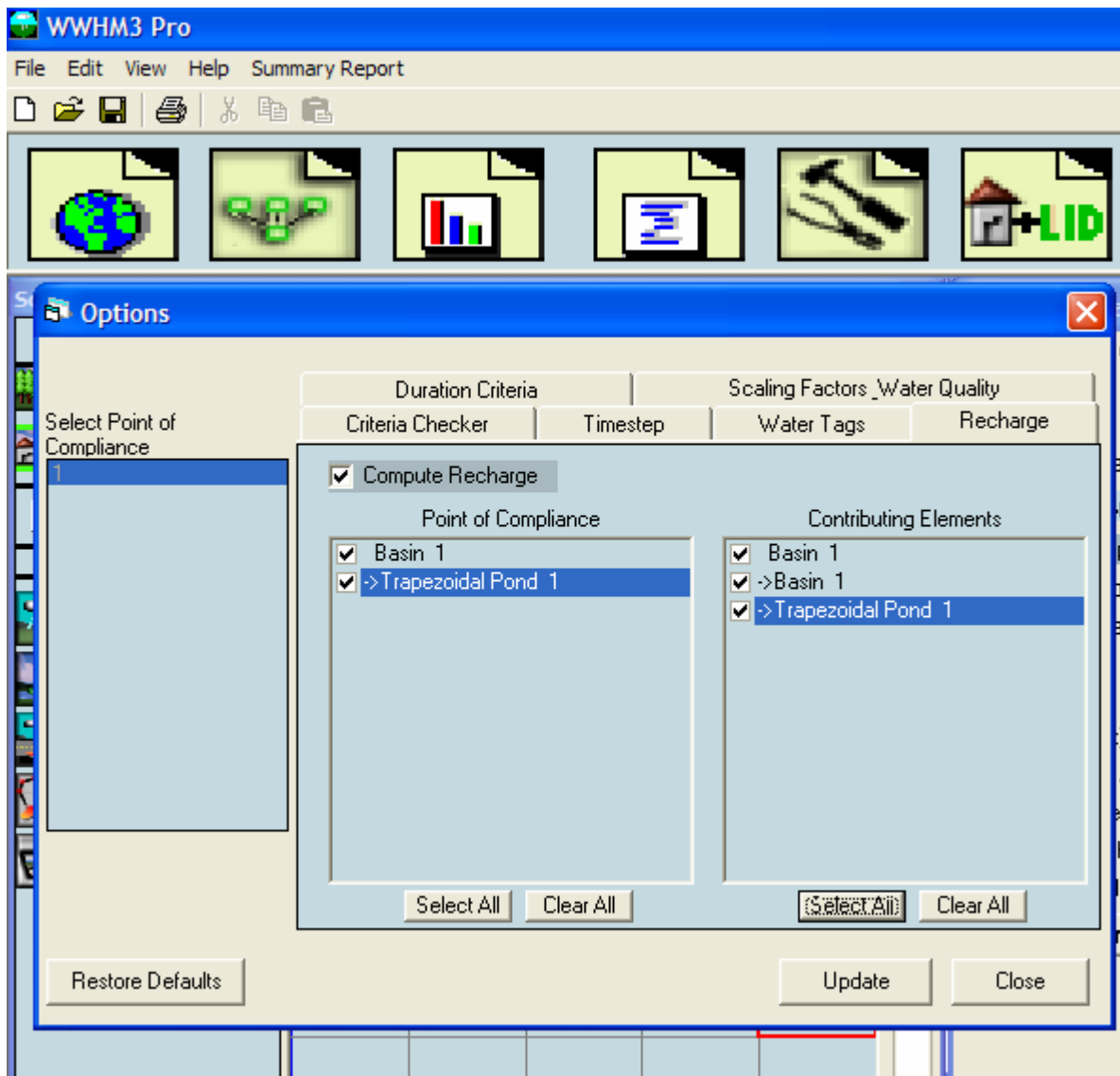
### Model Operation



To use the recharge calculation feature simply set up your model normally and then before running the model go to the View, Options menu item and bring up the Options window.

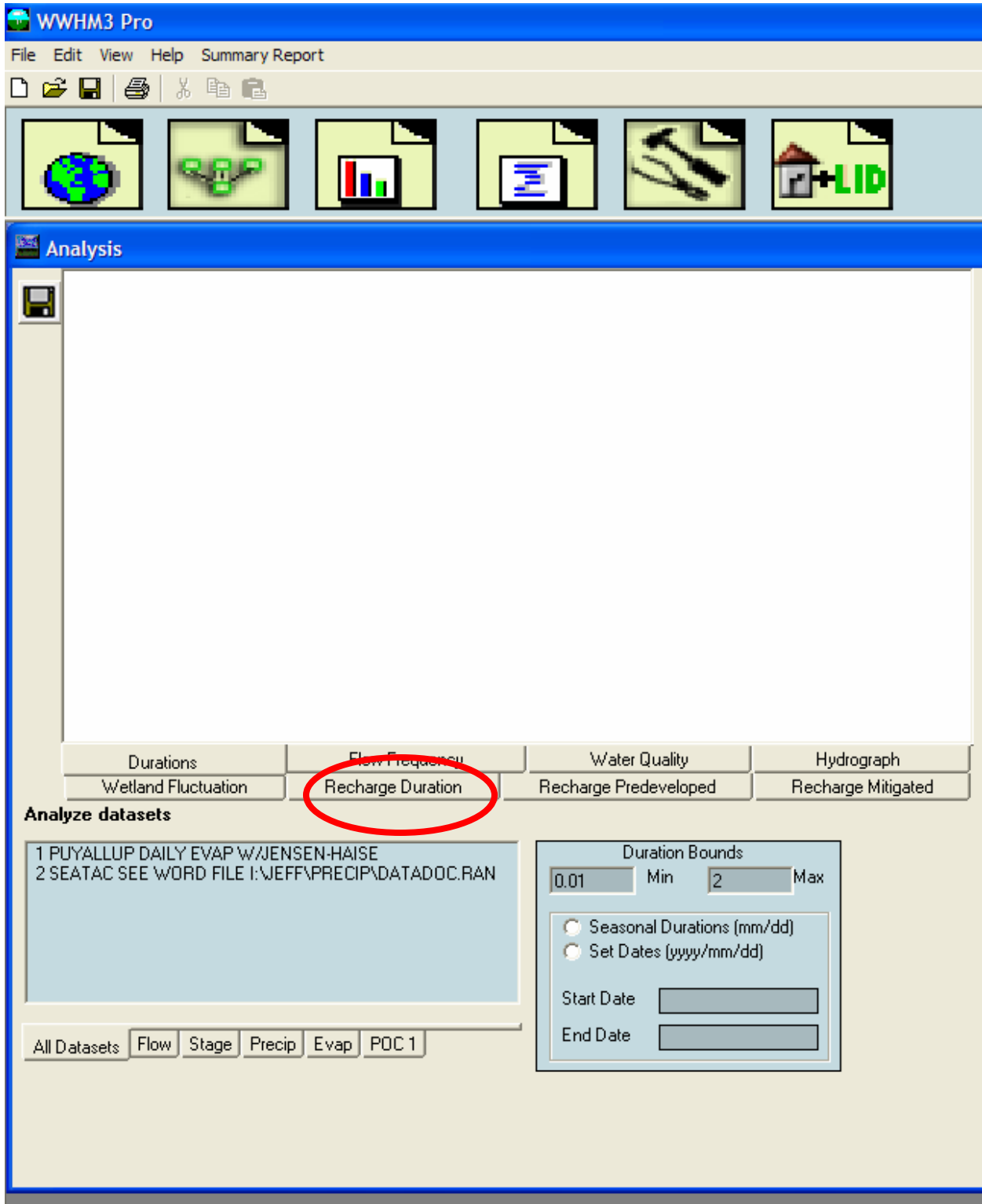


Select the "Recharge" tab.

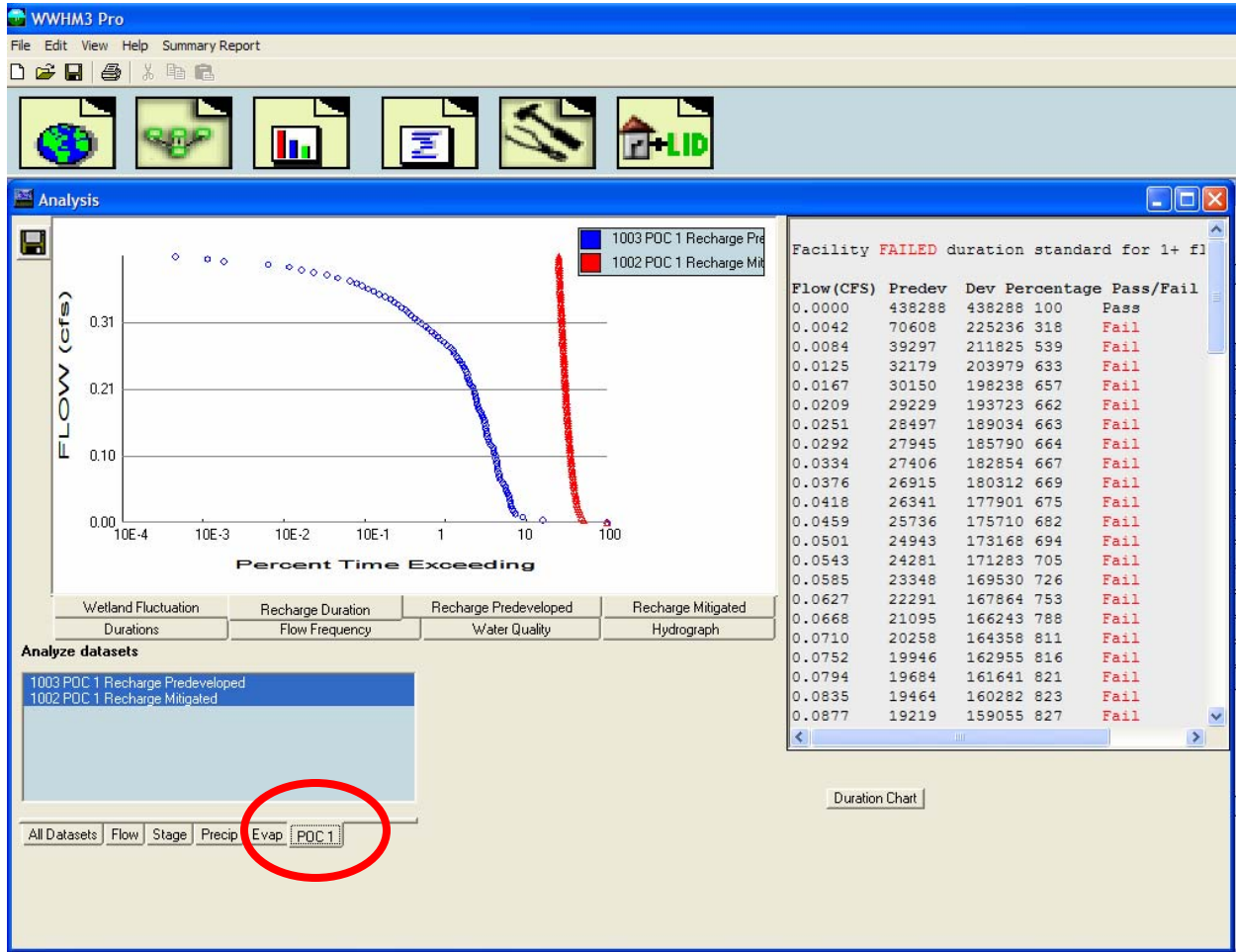


Check the “Compute Recharge” box to turn on recharge calculations. Then select the specific elements for which you want to compute recharge. Click the “Select All” button to select all elements. This turns on the recharge calculations for all the elements you are interested in. (Note: elements with an arrow (“->”) in front of their names are Mitigated scenario elements.) Then click Update and return to the Schematic screen where you can simply run the model as usual.

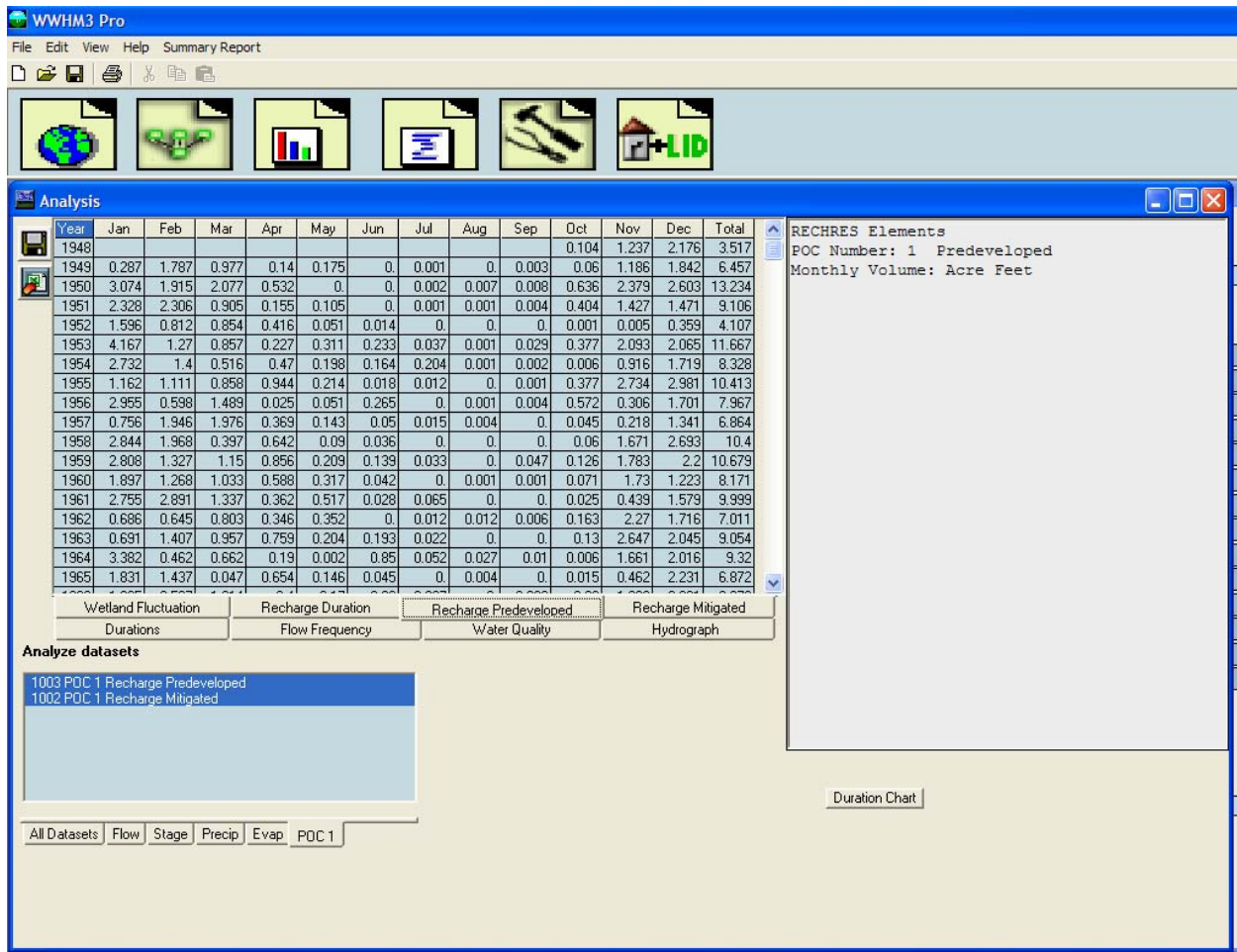
After running the model you need to go to the Analysis window so you can perform the duration analysis and summary analysis for the recharge data.



From here you can then perform the analysis you wish to perform. Simply select the “Recharge Duration” tab and then select the POC 1 tab to perform POC duration analysis on the selected POC and the model will perform the recharge duration analysis.



You can also view monthly and annual summaries of the recharge data by selecting either the “Recharge Predeveloped” for the predeveloped recharge data or “Recharge Mitigated” for the mitigated recharge data.



Once the analysis has been conducted the results will also show up in the report.

## **Summary**

Recharge data analysis has been added to the Thurston County version of the WWHM3. These data can be viewed in the form of a duration analysis or in the form of monthly and yearly summaries. Recharge analysis can be turned on or off by the user through the view/options menu item.