



MULLEN ROAD

CORRIDOR & INTERSECTION IMPROVEMENTS

OPEN HOUSE



Construction on a mile-long stretch of Mullen Rd. located between Timberline High School and Carpenter Rd. is slated to begin January 2020. Thurston County is inviting the public to an open house to learn more about the project.

**When: 4:30 - 6:30 p.m.
Wednesday
October 9, 2019**

**Where: Timberline High
School Commons
6120 Mullen Rd SE
Lacey, WA 98503**

LEARN ABOUT

- Funding
- Construction
- Time Lines
- Traffic Impacts
- Project Benefits

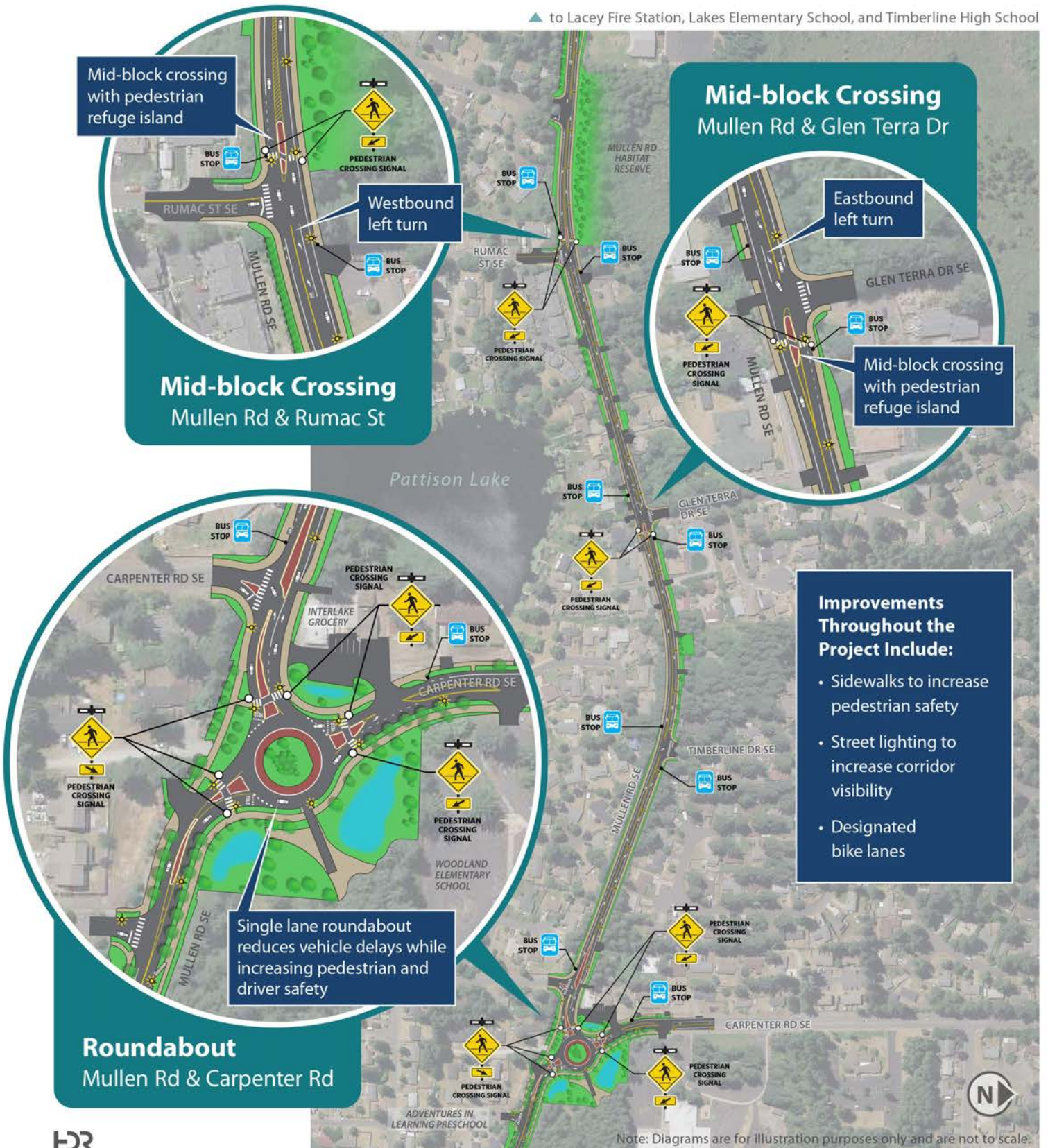


360-867-2300 • co.thurston.wa.us/publicworks •  @Thurston_PW

MULLEN ROAD PROJECT

CORRIDOR & INTERSECTION IMPROVEMENTS

▲ to Lacey Fire Station, Lakes Elementary School, and Timberline High School



- Improvements Throughout the Project Include:**
- Sidewalks to increase pedestrian safety
 - Street lighting to increase corridor visibility
 - Designated bike lanes



Note: Diagrams are for illustration purposes only and are not to scale.



JAN 2020

CONSTRUCTION TIME LINE

JAN 2022